

Accommodation Guide

CANADA'S NATIONAL PARKS

HOTELS

MOTELS

LODGES

BUNGALOWS

CABINS

INNS

CAMPS

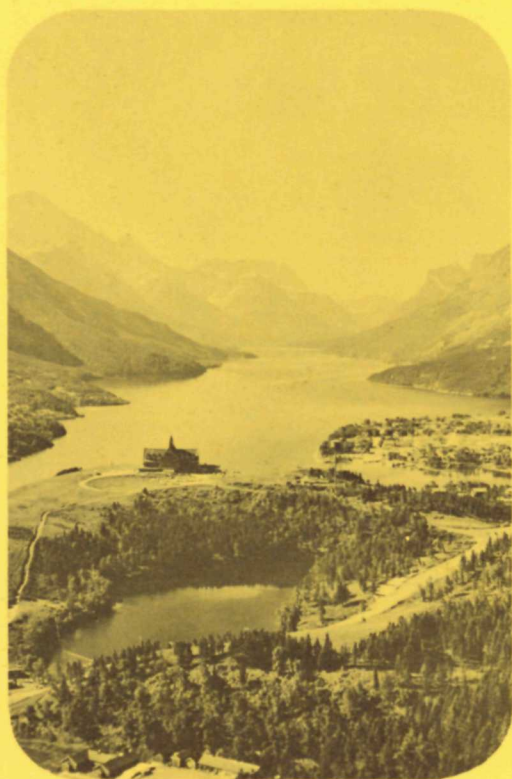
CHALETS

CAMP GROUNDS

TRAILER PARKS

PICNIC SITES

INFORMATION



ACCOMMODATION GUIDE

CANADA'S NATIONAL PARKS

FOREWORD

Selected areas of the outstanding and varied natural scenery of Canada are preserved in 18 national parks across this vast country. From the surf-washed shores of the Atlantic, across the great central plains to the snow-capped peaks of the Rockies, a chain of these parks offers vacation opportunities amid the wonders of nature.

Facilities for the accommodation of park visitors vary widely from campgrounds and trailer areas in carefully selected locations, to luxury resorts, hotels, and other establishments with every up-to-date convenience.

Commercial Accommodation

All visitor accommodation in the national parks is inspected and maximum daily rates are approved by the National Parks Service. Rates quoted here are the latest available at the time of printing (May 21, 1964) and may be subject to minor revisions. Meals are included with American Plan rates, while the rates for the European Plan cover overnight accommodation only.

To avoid disappointment, it is advisable to write to the establishments concerned in advance for the names of agencies handling reservations.

Camping

Campgrounds are of three main types:

Serviced, for which a nominal fee is charged—usually provide kitchen shelters, stoves or fireplaces, hot water, electricity and toilets. In some, laundry facilities, showers and coin-operated washers are also found.

Semi-serviced, for use free—are less well equipped but have kitchen shelters, stoves or fireplaces, drinking water and toilet facilities.

Primitive, also free—where there is no direct access by highway; provide only the minimum conveniences.

The use of campgrounds and trailer areas is on a first-come, first-served basis and reservations are not accepted. In most cases, camping in serviced areas is restricted to a limited period of time, generally two weeks.

Visitors wishing to camp elsewhere in approved areas of a park may do so upon obtaining camping and fire permits from the Warden Service.

Group camping sites are available in each national park and organized groups may write to the Superintendent of the national park to make a reservation. These group camping areas can be used only by organized groups directed by a qualified leader.

The normal season for camping in these parks is from late May into October, but this varies according to the climate of the locality.

Fees payable for camping permits in the national parks of Canada are as follows: Each tent, or passenger vehicle adapted to overnight accommodation including campers and camping units

One day.....	\$.50
One week.....	2.00

Travel Trailer

In (a) specially equipped trailer areas where individual water, sewer and electric connections are provided

One day.....	1.50
--------------	------

In (b) other trailer areas not equipped as in (a)

One day.....	.75
One week.....	3.00

Electric power for trailers [unless situated in an area mentioned in paragraph (a)]

Per day.....	.35
--------------	-----

All electric services in campgrounds are 60 cycle.

Wood fuel is supplied free to all camping and picnicking grounds.

The serviced campgrounds have full-time caretakers and some have matrons in attendance during the mid-summer months. Other campgrounds have part-time supervision.

Picnic Areas

Many picnic areas are provided free at selected locations usually convenient to park roads. Tables, fireplaces and drinking water are available at most of these. Camping is not permitted in picnic areas.

For additional copies of this publication, or other information
on the national parks of Canada, write to:

CANADIAN GOVERNMENT TRAVEL BUREAU
Ottawa, Canada

Compiled in co-operation with the National Parks Branch,
Department of Northern Affairs and National Resources.

Published by authority of
The Hon. Mitchell Sharp,
Minister of Trade and Commerce

INDEX

NATIONAL PARKS	PAGE
Glacier.....	5
Mount Revelstoke.....	5
Kootenay.....	6-7
Yoho.....	7-8
Waterton Lakes.....	8-9-10
Banff.....	11-12-13-14-15-16
Jasper.....	16-17-18-19-20
Elk Island.....	20
Prince Albert.....	21-22
Riding Mountain.....	23-24
Point Pelee.....	24-25
Georgian Bay Islands.....	26
St. Lawrence Islands.....	28
Fundy.....	28-29
Cape Breton Highlands.....	29-30
Prince Edward Island.....	30-31
Terra Nova.....	32



Canada's National Parks offer a wide choice of recreational facilities near to accommodation, like Radium Hot Springs, Kootenay National Park, British Columbia.

ACCOMMODATION IN CANADA'S NATIONAL PARKS

GLACIER NATIONAL PARK

29 Miles East of Revelstoke, British Columbia

Commercial Accommodation

NAME	LOCATION	CAPACITY	DAILY RATES	PLAN
Northlander	Rogers Pass	125 persons	\$ 9 to \$15 (S) \$12 to \$18 (D) \$ 2 each addit. person	

Campgrounds

LOCATION	CAPACITY	EQUIPMENT AVAILABLE	WATER SUPPLY	REMARKS
Illecillewaet	20 tents	K2,S2,T-dry	River	Close to trail system, 1 mi. from Glacier Station.
Loop Creek	20 tents	K2,S2,T-dry	River	Close to trail system, 1 mi. from Glacier Station.

MOUNT REVELSTOKE NATIONAL PARK

Revelstoke, British Columbia

There is no commercial accommodation in this park. Campground and picnic areas are closed to the public until 1966 to permit road reconstruction and further park development. However, there are excellent accommodation and campground facilities in the vicinity and the Trans-Canada Highway provides a comfortable route through the park.

CODE: (A) American Plan (E) European Plan (*) Summer season only (S) Single (D) Double
(C) Cooking facilities.
K—Kitchen Shelter S—Stove E—Electricity for trailers C—Community Building
F—Fireplace T—Toilet.

KOOTENAY NATIONAL PARK

Radium Hot Springs, British Columbia

Commercial Accommodation

NAME	LOCATION	CAPACITY	DAILY RATES	PLAN
*Addison's Bungalow Camp Limited	Radium Hot Springs	70 persons	\$7 up for 2 persons \$12 up for 4 persons \$1.50 each addit. person	(E&C)
Blakley's Bungalows	Radium Hot Springs	82 persons	\$9 up for 2 persons \$13 up for 4 persons \$1.50 each addit. person	(E&C)
Mount Farnham Bungalows	Radium Hot Springs	18 persons	\$9 to \$10.50 for 2 persons \$1.50 each addit. person	(E&C)
Radium Hot Springs Hotel	Radium Hot Springs	34 persons	\$5 to \$10 for 2 persons \$1.50 each addit. person	(E) Summer (A) Winter
Radium Hot Springs Lodge and Cottages	Radium Hot Springs	62 persons	\$7 up for 2 persons \$14 up for 4 persons \$1.50 each addit. person	(E&C)
*Vermilion Bungalow Camp	Vermilion Crossing	32 persons	\$8.00 up for 2 persons \$11.50 up for 4 persons \$1.50 each addit. person	(E&C)

Accommodation is also available at Radium Junction, two miles from Radium Hot Springs on the western approaches of the park.

Campgrounds

LOCATION	CAPACITY	EQUIPMENT AVAILABLE	WATER SUPPLY	REMARKS
Red Streak (Serviced)	100 tents 69 trailers	K3, S8, E, F, T-flush	Piped	4 miles from Radium Hot Springs. Caretaker and matron. Basic facilities 1 mile.
Olive Lake	16 units	S1, T-dry, K1, (double)	Creek	Olive Lake nearby. Fishing.
McLeod Meadows	10 units	K3 (double), S3, T-dry	Piped	On the floor of Kootenay Valley. Fishing.
Dolly Varden	14 units	K3 (double), S3, T-dry	Creek	Fishing.
Vermilion Crossing	15 units	K3, S3, T-dry	River	Store and service station nearby. Fishing.
Marble Canyon	18 units	K1, T-flush	Piped	Marble Canyon nearby, fishing, scenic.

KOOTENAY NATIONAL PARK

Radium Hot Springs, British Columbia

(Concluded)

Picnic Areas

LOCATION	CAPACITY	EQUIPMENT AVAILABLE	WATER SUPPLY	REMARKS
Mile 35	24 persons	T2-dry	River	Mi. 35 on Banff-Windermere Hwy. Wildlife.
Hawk Creek	16 persons	K1, S1, T-dry	Creek	Wildlife.
Numa	8 persons		River	Scenic viewpoint.
Marble Canyon	8 persons	T2-dry	River	Nature Trail.
Wardle Creek	48 persons	T2-dry	Creek	Near Animal lick.

YOHO NATIONAL PARK

Field, British Columbia

Commercial Accommodation

NAME	LOCATION	CAPACITY	DAILY RATES	PLAN
Cathedral Mountain Chalets Ltd.	2.5 mi. E. of Field	50 persons	\$4.50 up (S) \$5 up (D) \$1 each addit. person 3 cabins, store, gasoline pumps available during winter.	(E&C)
*Emerald Lake Chalet	Emerald Lake	75 persons	\$8 to \$10 (S) \$13 (D) \$1.50 to \$2.50 each addit. person.	(E)
Lake O'Hara Lodge	Lake O'Hara	36 persons	Main Lodge \$14.50 (S) \$25.50 (D) (A) Cabins \$18.50 to \$25.00 (S) \$29.50 to \$35.00 (D) \$40.50 to \$47.25 for 3 persons. \$57.00 for 4 persons.	
*Lake Wapta Lodge	Wapta Lake	49 persons	\$10 up (S) \$14 up (D) \$1.50 each addit. person.	(E)
Monarch Hotel	Field	20 persons	\$3.50 up (S) \$5.00 up (D) \$1 each addit. person.	(E)
Twin Falls Lodge	Yoho Valley	10 persons	\$10 (S)	(A)
*Highline Bungalows	Yoho Valley	35 persons	\$6.00 up (S) \$11.00 up (D) \$1.50 each addit. person.	(E)

Campgrounds

LOCATION	CAPACITY	EQUIPMENT AVAILABLE	WATER SUPPLY	REMARKS
Kicking Horse (Served)	160 tents 20 trailers	K9, S10, T-flush	Piped	Toilet & Shower Building. Children's playground, 3 mi. E. of Field townsite on Yoho Valley Road.
Hoodoo Creek (Semi-served)	54 tents	K2, S4, T-flush	Piped	6 service blocks, 3 mi. E. of west gate. Start of Hoodoo's Trail

CODE: (A) American Plan (E) European Plan (*) Summer season only (S) Single (D) Double
(C) Cooking facilities.

K—Kitchen Shelter S—Stove E—Electricity for trailers C—Community Building
F—Fireplace T—Toilet.

YOHO NATIONAL PARK

Field, British Columbia

(Concluded)

Campgrounds

LOCATION	CAPACITY	EQUIPMENT AVAILABLE	WATER SUPPLY	REMARKS
Chancellor Peak	20 tents	K2, S2, T-dry	Well	14 mi. W. of Field Townsite.
Takakkaw Falls	12 tents	K2, S2, T-dry	Piped	Highest waterfall in Canada. Yoho Valley—7 miles on Yoho Valley Roads.

Picnic Areas

Finn Creek	60 persons	K3, S4, T-dry	Piped	Riverside setting.
Wapta Lake	24 persons	T2-dry, K1, S1	Lake	Fishing.
Sink Lake	24 persons	T2-dry	Lake	Fishing.
Great Divide	40 persons	K2, S2, T-dry	Piped	Highway 1A.

Picnic tables are located at convenient intervals along the Trans-Canada Highway through the Park.

WATERTON LAKES NATIONAL PARK

Waterton Park, Alberta

Commercial Accommodation

NAME	LOCATION	CAPACITY	DAILY RATES	PLAN
*Allens Lakeshore Motel	Townsite	96 persons	\$10 to \$12 for 2 to 4 persons	(E&C)
*Alpine Motor	Townsite	20 persons	\$6 to \$10 for 4 persons	(E&C)
*Bridge View Cabins	Waterton	28 persons	\$4 to \$8 for 2 to 4 persons	(E&C)
*Cameron Lake Bungalow Camp	River Bridge	32 persons	\$6 for 4 persons	(E&C)
*Central Auto Court & Cabins	Cameron Lake	38 persons	\$5 to \$10 for 2 to 4 persons	(E&C)
*Crandell Lodge	Townsite	44 persons	\$6 for 2 persons \$9 to \$12 for 4 persons	(E&C)
*El Cortez Motel	Townsite	96 persons	\$10 to \$12 for 2 to 4 persons \$14 for 6 persons	(E)
*Emerald Bay Motel	Townsite	74 persons	\$10 to \$12 (S) \$14 to \$16 (D)	(E&C)
Franklin Motel & Rosedale Apartments	Townsite	63 persons	Apartments \$10 for 3 persons \$10 to \$15 for 4 to 6 persons Motel \$12 to \$17 for 2 to 6 persons	(E&C)
*Green Timber Apartments & Bellevue Lodge	Townsite	26 persons	Apartments \$8 to \$14 for 2 to 4 persons Lodge \$4 for 2 persons \$15 for 6 to 8 persons	(E&C)
*Kilmorey Motor Lodge	Townsite	70 persons	\$6 to \$8.50 for 1 person \$7 to \$12 for 2 persons \$11 to \$18 for 3 persons \$14 to \$20 for 4 persons	(E)

WATERTON LAKES NATIONAL PARK

Waterton Park, Alberta

(Continued)

Commercial Accommodation

NAME	LOCATION	CAPACITY	DAILY RATES	PLAN
*Kootenai Lodge	Townsite	32 persons	\$9 to \$12 for 2 to 4 persons	(E)
*Lake Shore Village	Townsite	68 persons	Lodge \$9 to \$10 for 2 persons \$11 to \$12 for 3 to 4 persons Chalets \$13 to \$14 for 4 persons	(E)
Northland Lodge	Townsite	19 persons	\$6 to \$7 for 2 persons \$10 for 4 persons	(E)
*Prince of Wales Hotel	Townsite	250 persons	\$18 to \$21.50 (S) \$32 to \$39 (D)	(A)
*Stanley Hotel & Cabins	Townsite	52 persons	Hotel \$5 (D) Cabins \$12 to \$20 for 6 to 16 persons	(E)
*Vimyvue Cabins	No. 5 Hwy. near L. Linnet	23 persons	\$5 (D) \$1 each addit. person Suites \$10 for 4 persons	(E&C)
*Waterton Auto Bungalow Camp	Townsite	90 persons	\$6 to \$12 for 2 to 4 persons \$12 to \$14 for 6 persons	(E&C)

Campgrounds

LOCATION	CAPACITY	EQUIPMENT AVAILABLE	WATER SUPPLY	REMARKS
Townsite Campgrounds (Serviced)	400 tents	K11, S11, C, E, F, T-flush	Piped	Near shopping centre and amphitheatre. Nature films.
Trailer Area	95 units	Water, sewer & electrical connections 15 to 60 amp.	Piped	5 service buildings with laundry facilities, showers, hot and cold water.
Cameron Lake (Semi-serviced)	25 tents	K2, S5, T-dry	Creek	Fishing. Store and Rowboats.
Red Rock Canyon (Semi-serviced)	25 tents	K2, S2, T-dry	Creek	Nature Trail.
Belly River (Semi-serviced)	25 tents	K2, S4, T-dry	Stand Pipes	Fishing. Wilderness area. $\frac{1}{2}$ mi. off Chief Mountain Hwy.

CODE: (A) American Plan (E) European Plan (*) Summer season only (S) Single (D) Double
(C) Cooking facilities.

K—Kitchen Shelter S—Stove E—Electricity for trailers C—Community Building
F—Fireplace T—Toilet.

WATERTON LAKES NATIONAL PARK

Waterton Park, Alberta

(Concluded)

Picnic Areas

LOCATION	CAPACITY	EQUIPMENT AVAILABLE	WATER SUPPLY	REMARKS
Alderson Lake	12 persons	K1, S1, T-dry	Lake	Fishing. 5-mi. hike from townsite.
Bertha Lake No. 1	12 persons	K1, S1, T-dry	Lake	Fishing. 4-mi. hike from townsite.
Bertha Lake No. 2	10 persons	K1, S1, T-dry	Creek	Fishing. 5-mi. hike from townsite.
Cameron Bay	400 persons	K4, S4, C1, F2, T-flush	Piped	Tables, fire circle, amphitheatre. Adjacent to main campground.
Cameron Falls	40 persons		Creek	Tables. Cool spot in townsite.
Cameron Lake (southwest shore)	12 persons	K1, S1, T-Dry	Lake	Fishing. Boating. Fire Grill. 1-mi. from Cameron Lake campground.
Coppermine Creek	16 persons	K1, S1, T-dry	Creek	Wildlife. On road to Red Rock Canyon.
Crandell Lake	20 persons	K2, S2, T-dry	Lake & Creek	Wildlife. 1-mi. hike from road.
Crypt Lake	10 persons	K1, S1, T-dry	Creek	Fishing. 5-mi. hike from Waterton Lake.
Emerald Bay	160 persons		Lake	Tables. Entrance to townsite. Boating and fishing.
Lost Horse Creek	8 persons	K1, S1, T-dry	Creek	Wildlife. On road to Red Rock Canyon.
Twin Lakes	10 persons	K1, S1, T-dry	Lake	Wilderness area, fishing. Wildlife. 7-mi. hike from Red Rock Canyon.
Marquis Hole	8 persons	K1, S1, T-dry	Lake	Fishing. Beach.
Wishbone (south shore Middle Waterton Lake)	8 persons	S1, T-dry	Lake	Fishing.
Pass Creek Bridge	40 persons	K1, S1, F4, T-dry	Creek	Fishing. Fire circle, children's playground.
Mile 4 Akamina Highway	12 persons	K1, S2, T-dry	Creek	Fishing.
Mile 9 Akamina Highway	12 persons	K1, S2, T-dry	Creek	Fishing.
Maskinonge Lake	24 persons	K1, S2, T-dry	Lake	Fishing.
Knight's Lake (north end)	12 persons	K1, S1, F4, T-dry	River	Scenic. Fire circle.
Belly River, Wagon Road	12 persons	K1, S4, T-dry	Stand Pipes	Fishing. Wilderness area. $\frac{1}{2}$ mi. off Chief Mountain Hwy.
Bertha Bay (west shore of Upper Waterton Lake)	10 persons	T-dry	Creek	1 $\frac{1}{2}$ -mi. by trail, 2-mi. by boat. Scenic, lakeshore, fishing, camping by permit. Tables and fire circles.

BANFF NATIONAL PARK

Banff, Alberta

Commercial Accommodation

NAME	LOCATION	CAPACITY	DAILY RATES	PLAN
Alpine Motel	Townsite	82 persons	\$11 to \$12 for 2 persons \$14 to \$16 for 4 persons \$19 for 6 persons \$1.50 each addit. person	(E&C)
*Archway Motel	1½ mi. N. of Townsite	188 persons	\$11 to \$12 for 2 persons \$12 to \$15 for 4 persons \$19 for 6 persons \$1.50 each addit. person	(E&C)
Arrow Motor Hotel	Townsite	75 persons	\$10 to \$12 for 2 persons \$12 to \$14 for 4 persons	(E)
*Arrowhead Motel and Lodge	Near Lake Louise Station	66 persons	\$6.50 to \$11 for 2 persons \$13 to \$18 for 4 persons	(E)
*Baker Creek Bungalows	28.8 mi. W. of Banff Townsite	64 persons	Rooms \$4 to \$6 for 2 persons \$6 for 4 persons Cabins \$5 for 2 persons \$9 for 4 persons	(E&C)
Banff's Rimrock Hotel	2½ mi. S. of Townsite	160 persons	Rooms \$9 to \$28 for 2 to 6 persons	(E)
Banffshire Inn	Townsite		\$14 to \$20 (D) \$16 to \$18 for 4 persons	
*Banff Springs Hotel	Townsite	1080 persons	\$16 to \$19 up (S) \$20 to \$24 up (D)	(E)
Beaver Apartments	Townsite	44 persons	\$10 to \$19 for 2 to 4 persons \$1.50 each addit. person	(E)
Bel-Plaza Motel	2 mi. N. of townsite	106 persons	\$9 to \$12 for 2 persons \$12 to \$14 for 4 persons \$17 to \$19 for 6 persons \$1.50 each addit. person	(E)
*Bow River Bungalows	Townsite	62 persons	Rooms \$3.50 to \$4.50 (S) Suites \$10 to \$13 for 4 persons Cabins \$10 to \$15 for 2 persons \$1.50 each addit. person	(E&C)
Bowview Lodge	Townsite	32 persons	Suites \$16 for 4 persons Rooms \$9 to \$11 for 2 persons \$1.50 each addit. person	(E&C)
Cascade Hotel	Townsite	144 persons	\$8 to \$12 (D)	(E)

CODE: (A) American Plan (E) European Plan (*) Summer season only (S) Single (D) Double
(C) Cooking facilities.

K—Kitchen Shelter S—Stove E—Electricity for trailers C—Community Building
F—Fireplace T—Toilet.

BANFF NATIONAL PARK

Banff, Alberta

(Continued)

Commercial Accommodation

NAME	LOCATION	CAPACITY	DAILY RATES	PLAN
*Castle-Eisenhower Bungalows	Eisenhower Junction	60 persons	\$10.00 for 2 persons \$10.00 to \$12 for 4 persons \$1.50 each addit. person	(E&C)
Charlton's Cedar Court	Townsite	80 persons	\$12 to \$16 for 4 persons	(E&C)
*Chateau Lake Louise	Lake Louise	708 persons	\$16 to \$19 up (S) \$21 to \$24 up (D) \$1.50 each addit. person	(E)
*Deer Lodge	Lake Louise	169 persons	\$5 to \$7.50 (S) \$6 to \$12 (D)	(E)
*Fairholme Bungalows	Townsite	48 persons	\$10 for 2 persons \$12 to \$16 for 4 persons \$16 to \$18 for 6 persons \$1.50 each addit. person	(E&C)
*Gammon Motel	Townsite	108 persons	\$13.50 for 2 persons \$17 for 4 persons \$1.50 each addit. person	(E)
*Homestead Hotel	Townsite	166 persons	\$4 (S) \$4 to \$10 (D) \$9 to \$14 for 3 to 4 persons \$1.50 each addit. person	(E)
*Johnston Canyon Bungalow Camp	16 mi. W. of townsite	130 persons	\$7 to \$8 for 2 persons \$15 for 4 persons \$1.50 each addit. person	(E&C)
Ken-Ric Motel	Townsite	108 persons	\$9 to \$12 for 2 persons \$16 for 4 persons \$1.50 to \$2.00 each addit. person	(E)
King Edward Hotel	Townsite	114 persons	\$5 (S) \$5 to \$13 for 2 to 4 persons (D)	(E)
Mile-Hi Lodge	Townsite	16 persons	\$10 to \$12 for 2 persons	(E)
*Moraine Lake Lodge and Motel	Moraine Lake	32 persons	\$11 to \$13 (D) \$14.50 for 3 persons \$16 to \$18 for 4 persons	(E)
*Motel Lake Louise	Near Lake Louise Station	78 persons	\$8.50 to \$11 for 2 persons \$12 to \$21 for 3 to 6 persons \$1.50 each addit. person	(E&C)

BANFF NATIONAL PARK

Banff, Alberta

(Continued)

Commercial Accommodation

NAME	LOCATION	CAPACITY	DAILY RATES	PLAN
Mount Royal Hotel	Townsite	208 persons	\$6.50 to \$7.50 (S) \$6.50 to \$14 (D) \$2.00 each addit. person.	(E)
Mount Temple Chalet (Summer and winter operation only)	5 mi. N. Lake Louise Station	20 persons	\$11	(A)
Mountainholme Lodge	Townsite	40 persons	\$8 to \$12 (D) Chalets \$18 for 4 persons \$1.50 each addit. person	(E&C)
Swiss Village Lodge	Townsite	217 persons	\$11 for 2 persons \$13.50 for 3 persons \$16 for 4 persons \$1.50 each addit. person Chalets \$18 to \$20 for 4 persons	(E&C)
*Mountview Bungalows (Upper)	Townsite	86 persons	\$12 for 3 persons \$16 to \$18 for 4 persons \$1.50 each addit. person	(E&C)
*Num-ti-jah Lodge	Bow Lake	62 persons	Rooms \$8 to \$13 for 2 persons Cabins \$9 to \$16 for 4 persons	(E)
*Paradise Bungalows	Near Lake Louise	97 persons	\$16 to \$19 for 4 persons \$20 to \$21 for 6 persons \$1.50 each addit. person Rooms \$5 to \$6 (D)	(E&C) (E)
*Pinewood Bungalows	Townsite	87 persons	\$12 to \$15 for 2 persons \$17 for 3 persons \$14 to \$16 for 4 persons \$18 to \$19 for 6 persons \$1.50 each addit. person	(E&C)
Post Hotel	Near Lake Louise Station	65 persons	Rooms \$7 to \$10 for 2 persons \$12 for 3 persons \$1.50 each addit. person Cabins \$7.50 to \$13.50 for 2 persons \$15 for 5 persons \$1.50 each addit. person	(E&C)
*Rainbow Chalets	Townsite	148 persons	\$10 to \$12 for 2 persons \$11 to \$13 for 3 persons \$12 to \$25 for 4 to 7 persons \$1.50 each addit. person	(E&C)

CODE: (A) American Plan (E) European Plan (*) Summer season only (S) Single (D) Double
(C) Cooking facilities.

K—Kitchen Shelter S—Stove E—Electricity for trailers C—Community Building
F—Fireplace T—Toilet.

BANFF NATIONAL PARK

Banff Alberta

(Continued)

Commercial Accommodation

NAME	LOCATION	CAPACITY	DAILY RATES	PLAN
Rundle Manor	Townsite	23 suites 106 persons	\$10 for 2 persons \$15 for 4 persons \$19 for 6 persons \$1.50 each addit. person	(E&C)
*Saskatchewan River Bungalows	Banff-Jasper Hwy. Mi. 47	50 persons	\$9 to \$10 for 2 persons \$10 to \$16 for 4 persons \$1.50 each addit. person	(E&C)
*Scratch's Banff Bungalows	Townsite	134 persons	\$5.00 to \$8 for 2 persons \$6.50 to \$12 for 4 persons \$1.50 each addit. person	(E&C)
Skoki Lodge (Winter & Summer)	6 mi. N. Mt. Temple Chalet	16 persons	\$9.50 (S)	(A)
Spruce Grove Motel	Townsite	86 persons	\$12 to \$13 for 2 persons \$16 to \$17 for 4 persons	(E&C)
*Storm Mountain Lodge. P.O. Box 670-Banff	Mi. 23.7 on Banff-Windermere Hwy.	45 persons	\$7 to \$8.50 for 2 persons \$7.50 to \$10.50 for 4 persons	(E)
Sunshine Village (Summer & Winter)	14 mi. from townsite	100 persons	\$10.50 to \$14.50 (S)	(A)
Swiss Village Lodge	Townsite	140 persons	\$18 to \$20 per unit accommod. up to 4 persons	(E)
Timberline Hotel	1½ mi. W. of townsite	107 persons	\$15 to \$25 for 2 persons	(E)
*Y.W.C.A. Chalet	Townsite	63 persons	\$3.50 up (S) \$4.50 up (D)	(E)
Travelers Motel	Townsite	55 persons	\$12 for 2 persons	(E)
The Voyager Inn	Townsite	88 units		(E)

Campgrounds

LOCATION	CAPACITY	EQUIPMENT AVAILABLE	WATER SUPPLY	REMARKS
Tunnel Mountain (Served)	600 tents 100 trailers	K28, S43, T-flush	Piped	13 service buildings, some with showers, laundry facilities. Playgrounds, nature film program, store, 1½ mi. from townsite.
Trailer Area (Served)	258 trailers	Water, sewer & electrical connections 15 or 40 amp.	Piped	9 service buildings with laundry tubs, coin-operated washers, showers.
Two Jack Lake (Served)	125 tents 11 trailers	K7, S10, E, F, T-flush	Piped	3 service buildings, laundry. † 43 individual tent sites.

†These campgrounds have individual campsites with fireplaces, tables, tent pads, and community kitchens.

BANFF NATIONAL PARK

Banff, Alberta

(Continued)

Campgrounds

LOCATION	CAPACITY	EQUIPMENT AVAILABLE	WATER SUPPLY	REMARKS
Johnston Canyon (Serviced)	100 tents	K11, S16, F, T-flush	Piped	4 service buildings, laundry, nature film showings, children's playgrounds. 16 mi. W. of townsite. †
Mount Eisenhower	42 tents	K2, S3, T-dry	Piped	Superb scenery. 19 mi. W. of townsite. †
Protection Mountain	72 tents 14 trailers	K3, S5, T-flush	Piped	7 mi. E. Eisenhower Jctn., Hwy. 1 A. Nature film showings. †
Lake Louise	100 tents	K3, S6, T-dry	Piped	Good hiking trails, nature film showings.
Moraine Lake	24 tents	K5, S6, T-dry	Stream	9 mi. from Lake Louise.
Mosquito Creek	25 tents	K1, S1	Piped	Mi. 14.5 Banff-Jasper Hwy. †
Bow Lake	10 tents	K1, S2, T-dry	Stream	Mi. 20.6 on Banff-Jasper Hwy.
Waterfowl Lake	50 tents	K4, S4, T-dry	Piped	Mi. 35.3 on Banff-Jasper Hwy., † 1 service building.
Rampart Creek	50 tents	K5, S5, T-dry	Piped & Stream	Mi. 54.5, Banff-Jasper Hwy. †
Cirrus Mountain	16 tents	K1, S1, T-dry	Piped	Mi. 65.5, Banff-Jasper Hwy. †

†These campgrounds have individual campsites with fireplaces, tables, tent pads, and community kitchens.

Picnic Areas

Sundance Canyon	160 persons	K2, S4, T-dry	Creek	16 tables. 2.3 mi. W. of Bow Bridge.
Recreation Grounds	140 persons	K3, S5, T-flush	Piped	35 tables, tennis courts, children's playground. ¼ mi. W. of Bow Bridge.
Central Park	160 persons	K2, S6, T-flush	Piped	28 tables. Children's playgrounds. Near Bow Bridge.
Lake Minnewanka	160 persons	K3, S5, T-dry	Piped	7 mi. from townsite. 25 tables. Fishing.
Mi. 7 W. of townsite	16 persons	Fire circle T-dry	Stream	3 tables. On No. 1A near junction with Trans-Canada Hwy.

CODE: (A) American Plan (E) European Plan (*) Summer season only (S) Single (D) Double
(C) Cooking facilities.

K—Kitchen Shelter

S—Stove

E—Electricity for trailers

C—Community Building

F—Fireplace

T—Toilet.

BANFF NATIONAL PARK

Banff, Alberta

(Concluded)

Picnic Areas

LOCATION	CAPACITY	EQUIPMENT AVAILABLE	WATER SUPPLY	REMARKS
Mi. 12 W. of townsite	24 persons	Fire circle T-dry	Stream	On No. 1A. 6 tables.
Baker Creek	20 persons	Fire circle T-dry	Stream	29 mi. W. of Banff on No. 1A. 3 tables.
Johnston Canyon	60 persons	K1, S1, T-dry	Piped	W. side of Johnston Creek.
Corral Creek	60 persons	F4, T-dry	Piped	On No. 1A, 34 mi. W. of Banff. 13 tables.
Waterfowl Lake	280 persons	K3, S5, T-dry	Piped	Mi. 35.3 Banff-Jasper Hwy.

Picnic tables are located at convenient intervals along the main park highways. Only those with fire circles or stoves have been listed here.

JASPER NATIONAL PARK

Jasper, Alberta

Commercial Accommodation

NAME	LOCATION	CAPACITY	DAILY RATES	PLAN
*Alpine Village	1.5 mi. S. of townsite	82 persons	\$10 to \$12.50 (D) \$15.50 to \$21.50 for 4 persons \$1.50 each addit. person	(E&C)
Andrew Motor Lodge	Townsite	180 persons	\$13.50 (S) \$15.50 to \$17.50 (D) \$2 each addit. person	(E)
Astoria Hotel	Townsite	81 persons	\$5 to \$7.50 (S) \$7 to \$10 (D)	(E)
Athabasca Hotel	Townsite	148 persons	\$7 to \$14 (S) \$8.50 to \$16 (D) \$18 for 3 persons \$20 for 4 persons	(E)
*Becker's Bungalows	4 mi. S. of townsite	112 persons	\$12 (D) \$13.50 to \$14 for 3 persons \$16.50 to \$18.50 for 4 persons \$1.50 each addit. person	(E&C)
*Columbia Icefield Chalet	Athabasca Glacier 65 mi. S. of townsite	30 persons	\$6 to \$8 (S) \$8 to \$12 (D)	(E)
*Diamond Motel	Townsite	64 persons	\$12 to \$15 (D) \$1.50 each addit. person	(E&C)

JASPER NATIONAL PARK

Jasper, Alberta

(Continued)

Commercial Accommodation

NAME	LOCATION	CAPACITY	DAILY RATES	PLAN
*Fred Brewster's Rocky Mountain Camps	Maligne Lake 33 mi. from townsite (car and boat)	24 persons	Chalet, huts \$6.50 (S) \$13 (D) \$14 (S) \$28 (D) Tent Cabins \$4.50 (S) \$9 (D) \$12 (S) \$24 (D)	(E) (A) (E) (A)
*Fred Brewster's Rocky Mountain Camps	Tonquin Val- ley, Amethyst Lakes 28 mi. from townsite (pack trip)	17 persons	Cabins \$6.50 (S) \$13 (D) Tent Cabins \$4.50 (S) \$9 (D)	(E)
*Jasper House Bungalows	2.4 mi. S.E. of townsite	90 persons	\$6 to \$14 (D) \$17 for 4 persons \$1.50 each addit. person	(E&C)
*Jasper Park Lodge	Lac Beauvert 4.5 mi. E. of townsite	675 persons	Rooms \$17 up (SWOB) \$28.50 up (DWOB) \$23 up (SWB) \$38 up (DWB) Suites \$50 up (WB)	(A)
*Maligne Tours	Maligne Lake 33 mi. from townsite (car and boat)	24 persons	Tents and Lodge \$4.50 (S) \$7 (D) Log Cabins \$8 (S) \$12 (D)	(E)
*Miette Hot Springs Bungalows & Motel	Miette Hot Springs 38 mi. N.E. of townsite	134 persons	\$5 to \$11 (D) \$12 to \$16 for 4 persons \$15 for 6 persons Tent Cabins \$5 (D) Motel & Cabins \$1.50 each addit. person Tent Cabins .75 cents each addit. person	(E&C)
*Mount Cavell Chalet	18 mi. S. of townsite	24 persons	\$6 (D) \$7.50 to \$10 for 3 persons \$10 for 4 persons	(E)
Mount Robson Motel	Townsite	102 persons	\$12 to \$13 (D) \$16 for 4 persons \$1.50 each addit. person	(E&C)

CODE: (A) American Plan (E) European Plan (*) Summer season only (S) Single (D) Double
(SWB) Single with bath (SWOB) Single without bath (DWB) Double with bath
(DWOB) Double without bath (WB) with bath (C) Cooking facilities.

K—Kitchen Shelter S—Stove E—Electricity for trailers C—Community Building
F—Fireplace T—Toilet.

JASPER NATIONAL PARK

Jasper, Alberta

(Continued)

Commercial Accommodation

NAME	LOCATION	CAPACITY	DAILY RATES	PLAN
*Palisades Motel	6½ mi. N.E. of townsite on Edmonton Hwy.	35 persons	Cabins \$10 (D) \$13 to \$14 for 4 persons \$1.50 each addit. person	(E&C)
*Patricia Lake Bungalows	3 mi. N.W. of townsite	128 persons	\$7.50 (D) \$12 for 4 persons \$1.50 each addit. person	(E&C)
*Pine Bungalows	1 mi. N.E. of townsite	208 persons	\$6 to \$7 (D) \$10 to \$13 for 4 persons \$1 & \$1.25 each addit. person	(E&C)
*Pocahontas Bungalows	27 mi. N.E. of townsite	152 persons	Fully modern \$8 to \$9 (D) \$10.50 to \$12 for 4 persons \$13.50 for 6 persons Semi-modern \$5 to \$6 (D) \$7 to \$8 for 4 persons \$1 & \$1.50 each addit. person	(E&C)
*Pyramid Lake Motel	3.5 mi. N.W. of townsite	40 persons	\$10 to \$12 (D) \$14 to \$16 for 4 persons \$1.50 each addit. person	(E&C)
Roche Bonhomme Bungalows	Townsite	66 persons	\$7.50 to \$9 (S) \$10 to \$15 for 4 persons \$1.25 each addit. person	(E&C)
*Sunwapta Bungalows	Sunwapta Falls 3.5 mi. S. of townsite	44 persons	\$5 to \$9 (D) \$7 to \$14 for 4 persons \$1 to \$1.25 each addit. person	(E&C)
*Tekarra Lodge (Bungalows)	1 mi. S. of townsite	150 persons	\$9.50 to \$12 (D) \$15 to \$16 for 4 persons \$1.50 each addit. person	(E&C)
Whistlers Motor Hotel	townsite	106 persons	\$10 to \$12 (S) \$13 to \$16 (D) \$2 each addit. person	(E)
*Y.M.C.A. Camp	Lake Edith 5 miles N.E. of townsite	91 persons	Chalet \$3 (S) \$4.50 (D) Guest Rooms \$3.50 (S) \$6.50 (D) Panabode \$6 (S) \$8 (D) Cabins \$7 (S) \$12 (D) Tents \$1.50 (S) \$3.00 (D) each addit. person Cabins, Rooms \$1.50 Tents .75	(E)

JASPER NATIONAL PARK

Jasper, Alberta

(Continued)

Campgrounds

LOCATION	CAPACITY	EQUIPMENT AVAILABLE	WATER SUPPLY	REMARKS
Cottonwood Creek (Serviced)	225 tents 53 trailers	K11, S11, E, T-flush	Piped	Nature Trail, nature film showings, Laundry, Showers. Provisions at townsite, 1 mi.
Snaring River	49 tents	K1, S2, F49 T10-dry	Well	Mi. 10.5, Edmonton Hwy. Stream fishing.
Rocky River	22 tents	K2, S4, F22 T6-dry	Well	Mi. 23, Edmonton Hwy.
Fiddle River	10 tents	F10, T4-dry	Well	Mi. 30, Edmonton Hwy.
Miette Hot Springs (Serviced)	100 tents	K5, S7, T-flush	Piped	Mineral Hot Springs. Store nearby.
Wapiti	120 tents	K4, S4, F120, E, T-flush	Piped	Mi. 3, Banff-Jasper Hwy.
Wabasso	44 tents	K1, S2, F44, T4-dry, T-flush	Piped	Mi. 10.1, Banff-Jasper Hwy. Fishing.
Mount Kerkeslin	18 tents	K1, S2, F18, T-dry	Spring	Mi. 22.4, Banff-Jasper Hwy.
Honeymoon Lake	10 tents	K2, S3, F10, T4-dry	Well	Mi. 32.2, Banff-Jasper Hwy. Fishing.
Jonas Creek	16 tents	K1, S2, F15, T4-dry	Piped	Mi. 48, Banff-Jasper Hwy.
Columbia Icefield	8 tents	K2, S2, T2-dry	Piped	Panorama of vast Icefield.
Derr Creek	6 tents	F4, T2-dry	Creek	Mi. 14.5, Yellowhead Hwy.

Picnic Areas

Cottonwood Creek	40 persons	F3, T2-dry	Piped	1 mi. E. of townsite.
Talbot Lake	8 persons	F1, T1-dry	Lake	Mi. 17.5, Edmonton Hwy. Fishing.
Portal Creek	24 persons	F2, T2-dry	Creek	Mi. 5.5, Banff-Jasper Hwy.
Mile 13.1	48 persons	F7, T2-dry	Creek	Mi. 13.1, Banff-Jasper Hwy.
Meeting of the Waters	24 persons	F3, T2-dry	River	Mi. 13.5, Banff-Jasper Hwy.
Leach Lake	32 persons	K1, S1, F2, T2-dry	Lake	Mi. 17.5, Banff-Jasper Hwy. Fishing.

CODE: (A) American Plan. (E) European Plan (*) Summer season only (S) Single (D) Double
(C) Cooking Facilities.

K—Kitchen Shelter

S—Stove

E—Electricity for trailers

C—Community Building

F—Fireplace

T—Toilet.

JASPER NATIONAL PARK

Jasper, Alberta

(Concluded)

Picnic Areas

LOCATION	CAPACITY	EQUIPMENT AVAILABLE	WATER SUPPLY	REMARKS
Athabasca Falls	32 persons	K1, S1, F3, T2-dry	River	Mi. 20, Banff-Jasper Hwy. Natural phenomenon.
Mile 26.2	24 persons	F3, T2-dry	Creek	Mi. 26.2, Banff-Jasper Hwy.
Mile 37	24 persons	F4, T2-dry	Spring	Mi. 37, Banff-Jasper Hwy.
Geikie	8 persons	F1, T2-dry	River	Mi. 9, Yellowhead Hwy.
Patricia Lake	40 persons	F3, T2-dry	Lake	3 mi. N.W. of townsite. Fishing.
Pyramid Lake (Island)	16 persons	K1, F2, T2-dry	Lake	4.5 mi. N.W. of townsite. Fishing.
Maligne River (Sixth Bridge)	40 persons	F4, T2-dry	Well	Mouth of Maligne River. Fishing.
Maligne Canyon	8 persons	F1, T4-dry	River	9 mi. N.E. of townsite. Natural phenomenon. Nature trail.
Lake Annette	400 persons	F26, T6-dry	Well	Open parkland, swimming, nature trail, fishing.

ELK ISLAND NATIONAL PARK

Lamont, Alberta

Commercial Accommodation

NAME	LOCATION	CAPACITY	DAILY RATES	PLAN
*Sunset Cabins	Astotin Lake	17 cabins	\$6 to \$10 for 1 to 4 persons \$1.50 each addit. person	(E&C)

Commercial accommodation is available at Edmonton, 30 miles West, and at Lamont, four miles north, of the park.

Campground

Sandy Beach (Served)	50 tents 8 trailers	K9, S9, E, T-flush	Piped	Near Astotin Lake and all park facilities. Concession booth.
----------------------	------------------------	-----------------------	-------	---

Picnic Areas

Sandy Beach	5000 persons	K9, S28, T-dry T-flush	Piped & Well
-------------	--------------	---------------------------	-----------------

PRINCE ALBERT NATIONAL PARK

Prince Albert, Saskatchewan

Commercial Accommodation

NAME	LOCATION	CAPACITY	DAILY RATES	PLAN
*Hillcrest Cabins	Waskesiu townsite	44 cabins	\$5.50 to \$11 for 2 to 6 persons	(E&C)
*Hillcrest House	Townsite	10 rooms 1 suite	\$5 to \$10 for 1 to 2 persons \$13 to \$15 for 2 to 4 persons	(E)
*Idalodge	Townsite	13 suites	\$7.50 to \$10 for 2 persons \$1 each addit. person	(E&C)
*Kapasiwin	Townsite	35 cabins	\$6.50 to \$12.50 for 2 persons \$1 each addit. person	(E&C)
*Lakeshore Apartments	Townsite	4 suites	\$4 to \$6 per suite	(E)
*Lakeview Hotel	Townsite	16 rooms 4 suites	\$4.50 up (S) \$6 up (D) \$9.50 for 2 persons \$11.50 for 4 persons \$13.50 for 6 persons	(E)
*Manville's Waskesiu Bungalow Cabins	Townsite	87 cabins	\$6 up for 2 persons \$49 to \$84 for 4 to 6 persons weekly.	(E&C)
*Narrows Bungalow	Waskesiu Narrows	22 cabins	\$6 to \$10 for 4 to 6 persons	(E&C)
*Northland Motel	Townsite	4 rooms 11 suites	\$5 (S) to \$7 (D) \$10.50 to \$16 for 2 to 6 persons	(E&C)
*Pleasant Inn and Motel	Townsite	13 rooms 19 suites	\$5 up (S) \$6 up (D) \$8.50 to \$12.50 per suite	(E) (E&C)
*Red Deer Hotel and Motel	Townsite	9 rooms 2 bed-sitting rooms 7 suites	\$4 up (S) \$5 up (D) \$6 up (S) \$8 up (D) \$10 up \$1 each addit. person	(E) (E) (E&C)
*Skyline Motel	Townsite	19 suites 2 rooms	\$10 up for 2 persons \$2 for 1 or 2 each addit. person \$6 up (S) \$8 up (D)	(E&C) (E)
*Waskesiu Lodge	Townsite	17 rooms	\$3 up (S) \$4 up (D)	(E)

CODE: (A) American Plan (E) European Plan (*) Summer Season only (S) Single (D) Double
(C) Cooking facilities.

K—Kitchen Shelter S—Stove E—Electricity for trailers C—Community Building
F—Fireplace T—Toilet.

PRINCE ALBERT NATIONAL PARK

Prince Albert, Saskatchewan

(Concluded)

Campgrounds

LOCATION	CAPACITY	EQUIPMENT AVAILABLE	WATER SUPPLY	REMARKS
Waskesiu (Served)	400 cabin- tents 200 tents 120 trailers	K26, S45, T-pump-out, E,C	Piped	Near sandy beaches and all park facilities. Nature Trail. Stores.
The Narrows	60 tents	K1, S2, T-pump-out	Well	Fishing. Store. Boats for hire.
Halkett (Sandy) Lake	25 tents	S3, T-pump- out	Spring	Good beaches. Fishing.
Namekus Lake	5 tents	K1, S2, T-dry	Lake	Used mainly by anglers.
Kingsmere Lake	20 tents	K1, S2, T-dry	Lake	Accessible by boat only.
Bagwa Lake	10 tents	T-dry	Lake	Accessible by boat only.
Crean Lake	10 tents	K1, S1, T-dry	Lake	Accessible by boat only.

Kingsmere Lake Areas

Bladebone Bay	10 tents	T-dry, Fire circle	Lake	Accessible by boat only.
Ajawaan Portage	10 tents	T-dry, Fire circle	Lake	Accessible by boat only.
Sandy Beach	10 tents	T-dry, Fire circle	Lake	Accessible by boat only.

Crean Lake Areas

Moose Bay	5 tents	T-dry, Fire circle	Lake	Accessible by boat only.
Third Island	5 tents	T-dry, Fire circle	Lake	Accessible by boat only.

Picnic Areas

Paignton Beach	200 persons	K1, S3, F5, T-dry	Lake	Good beach. 30 tables. Fishing.
The Narrows	40 persons	K1, S1, T-dry	Well	Fishing. 8 tables.
Trippe's Beach	50 persons	T-dry, F3	Lake	Fishing. 10 tables.
Camp No. 2 Point	20 persons	F2, T-dry	Lake	Good beaches. 6 tables. Parking for 8 cars.
7 Mile	140 persons	F2, S3, T-dry	Lake	Sand beach. 15 tables.
Canal	40 persons	K1, F1, T-dry	Lake	8 tables.
Hanging Heart Lake	40 persons	F1, T-dry	Lake	Used mainly by anglers. Parking for 100 cars. 8 tables.
Waskesiu River Bridge	20 persons	T-dry, Fire circle	River	Used mainly by anglers. 6 tables.

RIDING MOUNTAIN NATIONAL PARK

Wasagaming, Manitoba

Commercial Accommodation

NAME	LOCATION	CAPACITY	DAILY RATES	PLAN
*Buffalo Drive Motel	Wasagaming Townsite	18 suites	\$13 to \$16 for 4 persons \$1 each addit. person	(E&C)
*Eden Cabins	Townsite	15 cabins	\$8 to \$12 for 4 to 6 persons	(E&C)
*Idylwyld Bungalows	Townsite	46 cabins	\$4 to \$12 for 2 to 6 persons	(E&C)
*Idylwyld Motel	Townsite	17 suites	\$9 to \$15 for 2 to 6 persons	(E&C)
*Johnson Cabins and Wasagaming Bungalows	Townsite	43 cabins 10 suites	\$7 to \$20 for 2 to 8 persons \$7.50 to \$15 for 2 to 6 persons	(E&C) (E&C)
*Lake Lodge (Hotel)	Townsite	22 rooms	\$3.50 to \$8 for 1 to 4 persons \$1.50 each addit. person	(E)
*Lee's Holiday Bungalows	Townsite	25 cabins	\$7 to \$16 for 2 to 6 persons	(E&C)
*Mooswa Bungalows	Townsite	34 cabins	\$8 to \$15 for 2 to 6 persons \$1 each addit. person	(E&C)
*Sylvan Lodge (Hotel)	Townsite	34 rooms 13 suites	\$4.50 to \$15 for 1 to 4 persons \$10 to \$28 for 1 to 6 persons	(E)
*Ta-Wa-Pit Lodge	Townsite	46 rooms	\$5 (S) \$6.50 (D)	(E)
*The Siesta Lodge	Townsite	23 rooms	\$5 to \$10 for 1 to 4 persons	(E)
*Wasagaming Lodge	Townsite	23 rooms	\$4 to \$12 for 1 to 4 persons	(E)

Campgrounds

LOCATION	CAPACITY	EQUIPMENT AVAILABLE	WATER SUPPLY	REMARKS
Clear Lake (Serviced)	421 tents 244 trailers	K36, S, C, E, T-flush	Piped	Near sandy beaches and all park facilities. Stores nearby. Nature film program.
Wasagaming (Serviced)	150 tents 75 trailers	K13, S26, T-flush Water, Sewer, electrical con- nection 15, 30 and 50 amps.	Piped	6 service buildings with showers. Near beach, stores, service station and laundromat.
Grayling Lake	10 tents	Grill, T-dry	Well	6 tables. Fishing.
Moon Lake	25 tents	K3, S6, T-dry	Well	Fishing, 1 dock.
Lake Audy	50 tents	K3, S6, T-dry	Well	Fishing, 1 dock.
Lake Katherine	50 tents	K4, S8, T-dry	Well	Fishing, 2 docks.

CODE: (A) American Plan (E) European Plan (*) Summer season only (S) Single (D) Double
(C) Cooking facilities.

K—Kitchen Shelter S—Stove E—Electricity for trailers C—Community Building
F—Fireplace T—Toilet.

RIDING MOUNTAIN NATIONAL PARK

Wasagaming, Manitoba

(Concluded)

Picnic Areas

LOCATION	CAPACITY	EQUIPMENT AVAILABLE	WATER SUPPLY	REMARKS
Wasagaming	300 persons	K3, S4, T-flush	Piped	Behind nature museum.
Whirlpool Lake	32 persons	K1, S2, T-dry	Well	4 tables.
Wishing Well (Glen Beag Drive)	32 persons	Stove and grill, T-dry	Lake	8 tables.
Spruce (Mi. 9, Highway 10)	24 persons	Stove and grill, T-dry	Well	6 tables.
Aspen (Mi. 1, Lake Audy Road)	40 persons	Stove and grill, T-dry	Well	6 tables.
Clear Spring (Mi. 7, Highway 19)	24 persons	Grills, T-dry	Spring	4 tables.
Ox Creek (Mi. 19, Highway 19)	24 persons	Grills, T-dry	Well	6 tables.

POINT PELEE NATIONAL PARK

Leamington, Ontario

Commercial Accommodation

Commercial accommodation is available at nearby Leamington and vicinity. Information may be obtained from the Leamington Chamber of Commerce.

Campgrounds

LOCATION	CAPACITY	EQUIPMENT AVAILABLE	WATER SUPPLY	REMARKS
Point Pelee Campground (Serviced)	100 tents 15 trailers	K3 S60 E, T-flush	Yes	Sandy beach, nature trail, Park Naturalist program, Showers and laundry.
Group Campground (Serviced)				
Little Racoon	20 tents	K2, S10	Tap	Campfire circles, sandy beach.
Marsh Hawk	20 tents	T-flush		Special reservations required.

Picnic Areas

Marshview	40 persons	K2, S4 T-flush	Tap, well	Sandy beach.
The Monument	200 persons	K2, S6 T-flush	Tap	Sandy beach.

POINT PELEE NATIONAL PARK

Leamington, Ontario

(Concluded)

Picnic Areas

LOCATION	CAPACITY	EQUIPMENT AVAILABLE	WATER SUPPLY	REMARKS
North West Beach	1200 persons	K2, S6 T-flush	Tap, well	Sandy beach, campfire circles supervised swimming, boat launching ramp. Near entrance to Point Pelee Marsh, aquatic nature trail and boardwalk.
The Dunes	150 persons	K2, S8 T-flush	Tap	Near sandy beach.
Sleepy Hollow	150 persons	K2, S8 T-flush	Tap, well	Near sandy beach.
Walnut Grove	300 persons	K2, S9 T-flush	Tap	Near sandy beach.
Black Willow Beach	500 persons	S24, T-dry	Well	Sandy beach, individual parking and picnic sites.
White Pine	200 persons	K2, S12 T-flush	Tap, well	Near sandy beach.
Red Oaks	100 persons	K2, S6 T-flush	Tap, well	Near sandy beach.
West Beach	4000 persons	K3, S6 2T-flush	Tap, well	Campfire circles, sandy beach, boat launching ramp.
Red Cedar	100 persons	K2, S7	Tap, well	Near sandy beach. Woodland nature trail.
East Beach	300 persons	K2, T-dry S2	Well	Campfire circles, sandy beach.
Hackberry	500 persons	S6	Well	Boat launching ramp, sandy beach, campfire circle.

Point Beaches

West Side	1500 persons	K1, S6 T-flush	Tap, well	Good fishing from rock erosion control wall, sandy beach.
East Side	2000 persons	K2, S10 2T-flush	Tap, well	Supervised swimming, sandy beach, refreshment booth, campfire circles.

CODE: K—Kitchen Shelter S—Stove E—Electricity for trailers C—Community Building
F—Fireplace T—Toilet.

GEORGIAN BAY ISLANDS NATIONAL PARK

Honey Harbour, Ontario

Commercial Accommodation

There is no commercial accommodation in this Park, but it is available at Midland, Honey Harbour, Penetanguishene, and many other centres convenient to the park. The park is not accessible by car but visitors may park on the mainland near Honey Harbour and reach Beausoleil Island by water-taxi or in their own boats.

Campgrounds (Beausoleil Island)

LOCATION	CAPACITY	EQUIPMENT AVAILABLE	WATER SUPPLY	REMARKS
Main Campground Serviced (Toby Dock to Finger Point)	150 tents	K5, S11, T-flush	Piped	3 docks, laundry, showers, nature trails, amphitheatre.
Thumb Point	8 tents	K1, S2, T-dry	Lake	2 docks, 1 pavilion.
Tonch Point	12 tents	K3, S3, T-dry	Lake	3 docks, 3 pavilions.
Sandpiper Bay	4 tents	K1, S1, T-dry	Lake	1 dock, 1 pavilion.
McCabe Rock	2 tents	S1, T-dry	Lake	1 dock.
The Oaks	12 tents	K2, S4, T-dry	Lake	1 dock, 2 pavilions.
Chimney Bay	6 tents	K1, S2, T-dry	Lake	1 dock, 1 pavilion.
Little Dog	2 tents	S1, T-dry	Lake	1 dock.
Minnehaha	6 tents	S2, T-dry	Lake	1 dock.
Codettes Grove	6 tents	K1, S3, T-dry	Lake	1 dock, 1 pavilion.
Cherry Point	3 tents	S1, T-dry	Lake	1 dock.
Panhawke	3 tents	S1, T-dry	Lake	1 dock.
Frying Pan Bay	4 tents	S1, T-dry	Lake	1 dock.
Honeymoon Grove	10 tents	K2, S3, T-dry	Lake	2 docks, 1 pavilion.
Lost Bay	4 tents	S1, T-dry	Lake	1 dock.
Christian	10 tents	K1, S2, T-dry	Spring	1 dock, 1 pavilion.
Sunset	3 tents	S1, T-dry	Lake	
Beausoleil Point	20 tents	K1, S2, T-dry	Lake	1 dock, 1 pavilion.
Island No. 92	8 tents	K2, S2, T-dry	Lake	1 dock.
Island No. 95B	4 tents	K1, S1, T-dry	Lake	1 dock, 1 pavilion.

Picnic Areas

Headquarters	150 persons	K2, S4, T-flush	Piped	1 pavilion. Lifeguard on duty. Children's playground.
--------------	-------------	-----------------	-------	--

CODE: K—Kitchen Shelter S—Stove C—Community Building F—Fireplace T—Toilet.



Picnic and camping facilities in the National Parks of Canada are among the finest in North America, shown is a picnic site in the St. Lawrence Islands Park, Ontario.

ST. LAWRENCE ISLANDS NATIONAL PARK

Mallorytown, Ontario

Commercial Accommodation

There is no commercial accommodation in this park but it is available at towns and cities, and along the St. Lawrence River from Kingston to Cornwall.

Campgrounds

LOCATION	CAPACITY	EQUIPMENT AVAILABLE	WATER SUPPLY	REMARKS
Mallorytown Landing (Serviced)	60 tents	T-flush S20	Tap	Nature trail, boat ramp, swimming.

Camping is also permitted on all of the Park Islands.

Picnic Areas

Mallorytown Landing (Serviced)	250 persons	S2, K1, T-dry	Well	Accessible by car. 1 dock, 1 pavilion, dressing rooms. Lifeguard at main beach.
Cedar Island	100 persons	S7, T-dry	Well	2 docks, 1 pavilion, 2 dressing rooms.
Adelaide Island	25 persons	S2, T-dry	River	dock, 1 pavilion.
Gordon Island	100 persons	S4, T-dry	Well	dock, 1 pavilion.
Georgina Island	75 persons	S4, T-dry	Well	2 docks, 2 pavilions.
Grenadier Island	50 persons	S4, T-dry	River	dock, 1 pavilion.
Stovin Island	150 persons	S6, T-dry	Well	2 docks, 2 pavilions.
Beau Rivage Island	200 persons	K1, S7, T-dry	Well	2 docks, 1 pavilion.
Mermaid Island	10 persons	S1, T-dry	Well	dock.
Endymion Island	10 persons	K1, S2, T-dry	Well	dock.
Camelot Island	25 persons	S2, T-dry	Well	dock, 1 pavilion.
Constance Island	25 persons	S2, T-dry	River	dock.
Aubrey Island	75 persons	S4, T-dry	Well	2 docks, 1 pavilion.

RIVER WATER SHOULD BE BOILED FOR DRINKING. ISLANDS ACCESSIBLE BY BOAT ONLY.

FUNDY NATIONAL PARK

Alma, New Brunswick

Commercial Accommodation

NAME	LOCATION	CAPACITY	DAILY RATES	PLAN
Alpine Chalets	1 mi. W. of Park Head-quarters	24 cottages with refrigerators	\$9.50 for 1 or 2 persons (without kitchenette) \$11.00 (with kitchenette) up to \$2 for each addit. person \$1 for each child under 12 years.	(E)
*Fundy Park Chalets	Park Head-quarters	29 cottages with refrigeration lockers	\$9.50 for 1 or 2 persons (without kitchenette) \$11.00 (with kitchenette) up to \$2 for each addit. person \$1 for each child under 12 years.	(E)
Fundy View Motel	1 mi. W. of Park Head-quarters	20 units with refrigerators	\$11.00 for 1 or 2 persons \$20 for 4 persons (1 apartment only) \$2 for each addit. person \$1 for each child under 12 years.	(E)

Accommodation is also available in the town of Alma nearby, details of which may be obtained from the New Brunswick Travel Bureau, Fredericton, N.B.

FUNDY NATIONAL PARK

Alma, New Brunswick

(Concluded)

Campgrounds

LOCATION	CAPACITY	EQUIPMENT AVAILABLE	WATER SUPPLY	REMARKS
Park Headquarters (Serviced)	125 tents 29 trailers	K3, S6, C, E, T-flush, F2	Piped	Heated salt water pool. Park Naturalist Program. Amphitheatre. Fishing. Laundry. Showers.
Point Wolfe (Serviced)	200 tents	K5, S5, T-flush	Piped	Park Naturalist Program. Fishing. Hiking. Laundry. Showers.

Picnic Areas

Bennett Lake	200 persons	K1, S1, T-dry F1	Well	Fishing.
Wolfe Lake	200 persons	F1, S1, K1, T-flush	Piped	Fishing.
Hueston Place	100 persons	F2, T-dry	Spring	Peaceful environment.
Bogle Farm	400 persons	F2, T-dry	Spring	Nature Trail.
Herring Cove	200 persons	K3, S2, F1, T-dry	Piped	Beach.
Pointe Wolfe	200 persons	F3, T-dry	Spring	River, beach, fishing.

CAPE BRETON HIGHLANDS NATIONAL PARK

Ingonish Beach, Nova Scotia

Commercial Accommodation

NAME	LOCATION	CAPACITY	DAILY RATES	PLAN
*Cape Breton Highlands Bungalows	Ingonish Beach	25 cabins with refrigeration lockers	\$9 for 1 or 2 persons (without kitchenette) \$10 (with kitchenette) \$2 each addit. person \$1 for each child under 12 years.	(E)
*Keltic Lodge	Ingonish Beach	180 persons	\$18 to \$20 (S) \$30 to \$34 (D)	(A)

Accommodation is also available at many establishments near the Park, details of which may be obtained from the Nova Scotia Travel Bureau, Halifax, N.S.

Campgrounds

LOCATION	CAPACITY	EQUIPMENT AVAILABLE	WATER SUPPLY	REMARKS
Ingonish Beach (Serviced)	100 tents 10 trailers	K4, S5, F4, T-flush	Piped	Salt and freshwater bathing. Children's playground. Hiking trail. Laundry, coin-operated washers, showers. Store 1 mi.

CODE: (A) American Plan (E) European Plan (*) Summer season only (S) Single (D) Double (C) Cooking facilities.

K—Kitchen Shelter S—Stove E—Electricity for trailers C—Community Building
F—Fireplace T—Toilet.

CAPE BRETON HIGHLANDS NATIONAL PARK

Ingonish Beach, Nova Scotia

(Concluded)

Campgrounds

LOCATION	CAPACITY	EQUIPMENT AVAILABLE	WATER SUPPLY	REMARKS
Broad Cove (Serviced)	190 tents 49 trailers	K3, E, T-flush	Piped	Hiking trail, laundry, coin-operated washers. Stores 1 mi.
Big Intervale	10 tents 2 trailers	K1, S1, T-flush	Piped	Fishing. Store, 6 mi.
MacIntosh Brook	30 tents 10 trailers	K2, F4, T-flush	Piped	Village, 2 mi.
Corney Brook	20 tents 5 trailers	F10, K2, S2, T-flush	Piped	Village, 5 mi.
Little River (Cheticamp)	125 tents 24 trailers	K5, S5, E, T-flush	' Piped	Children's playground. Salmon fishing. Village stores, 2 mi. Laundry, coin-operated washers, showers.

Picnic Areas

Ingonish Beach	400 persons	K1, T-dry	Piped	Village, 1 mi. Salt and fresh water bathing.
Clyburn Brook	24 persons	F2	Brook	Fishing. Store, 2 mi.
Warren Lake	24 persons	F1, T-dry	Lake	Fishing. Store, 2 mi.
Mary Ann Brook	24 persons	F1	Brook	Fishing, overlooking falls. Store, 5 mi.
Black Brook	80 persons	S1, F6, T-dry	Spring	Fishing, beach.
South Mountain	16 persons	F2, T-dry	Spring	Near Cabot Trail.
Lone Shieling	40 persons	F2, T-flush	Piped	Along Cabot Trail.
Rigwash	20 persons	F1, T-dry	Spring	Near Cheticamp entrance.

PRINCE EDWARD ISLAND NATIONAL PARK

Stanhope, P.E.I.

Commercial Accommodation

NAME	LOCATION	CAPACITY	DAILY RATES	PLAN
*Avonlea Lodge	Cavendish	8 rooms 16 cottages	\$5 for 1 person \$7 to \$12 for 2 persons \$12 to \$15 for 4 persons \$1 to \$3 for each addit. person \$1 for each child under 12 years.	(E)
*Dalvay Hotel and Cottages	Dalvay Beach	32 rooms	\$9.50 to \$18 per person \$18 to \$28 (D).	(A)

PRINCE EDWARD ISLAND NATIONAL PARK

Stanhope, P.E.I.

(Concluded)

Commercial Accommodation

NAME	LOCATION	CAPACITY	DAILY RATES	PLAN
*Green Gables Bungalow Court	Cavendish	120 persons	\$8.50 for 1 or 2 persons \$15 to \$16.50 for 6 persons \$20.50 for 8 persons \$2 for each addit. person \$1 for each child under 12 years.	(E)

Accommodation is also available at many establishments near the Park, details of which may be obtained from the Prince Edward Island Travel Bureau, Charlottetown, P.E.I.

Campgrounds

LOCATION	CAPACITY	EQUIPMENT AVAILABLE	WATER SUPPLY	REMARKS
Stanhope (Serviced)	168 tents 14 trailers	K5, S8, E, T	Piped	3 service buildings, laundry tubs and coin-operated washers. Lifeguard at main beach.
Stanhope (Primitive)	7 tent lots	T, F	Spring	Children's playgrounds. Refreshment booth. Store. Amphitheatre. Lifeguard at beach
Rustico Island	150 tents	still under development		
Cavendish (Serviced)	226 tents 77 trailers	K8, S12, E, T	Piped	8 service buildings, laundry tubs and coin-operated washers. Amphitheatre. Children's playgrounds. Lifeguard at beach. Store.

Picnic Areas

Dalvay Beach	240 persons	K1, S1, E, T	Piped	Nature Trail, children's playground. Lifeguard at main beach, Canteen, dressing rooms.
Cavendish Beach	1000 persons	K3, S4, C, E, T	Piped	Children's playgrounds. Lifeguard at main beach. Refreshments, dressing rooms, recreation room.
Stanhope Lane	400 persons	K2, S2, E, F, T	Piped	Children's playgrounds. Lifeguard at beach, dressing rooms, canteen.
Stanhope Beach	800 persons	K2, S2, F, E, T	Piped	Children's playgrounds. Lifeguard at beach, dressing rooms, canteen.
Covehead Beach	200 persons	K1, S1, F, T-chemical	Well	Good beach. Lifeguard, dressing rooms. Softball diamond.
Cape Turner	160 persons	K2, S2, F, T-chemical	Well	Pastoral seascape.
North Rustico	160 persons	K1, S1, T-chemical	Well	Good beach.
Brackley Beach	1000 persons	K4, S5, T, F, E		Children's playgrounds. Lifeguard, dressing rooms, canteen.

Sunbathe on any beach—but swim only in the areas supervised by the lifeguards.

CODE: (A) American Plan (E) European Plan (*) Summer season only (S) Single (D) Double (C) Cooking facilities.

K—Kitchen Shelter S—Stove E—Electricity for trailers C—Community Building
F—Fireplace T—Toilet.

TERRA NOVA NATIONAL PARK

Glovertown, Newfoundland

Commercial Accommodation

NAME	LOCATION	CAPACITY	DAILY RATES	PLAN
*Terra Nova Park Bungalows	Newman Sound	96 persons	\$10 for 1 or 2 persons \$2.50 each addit. person \$1 each child under 12 years.	(E)

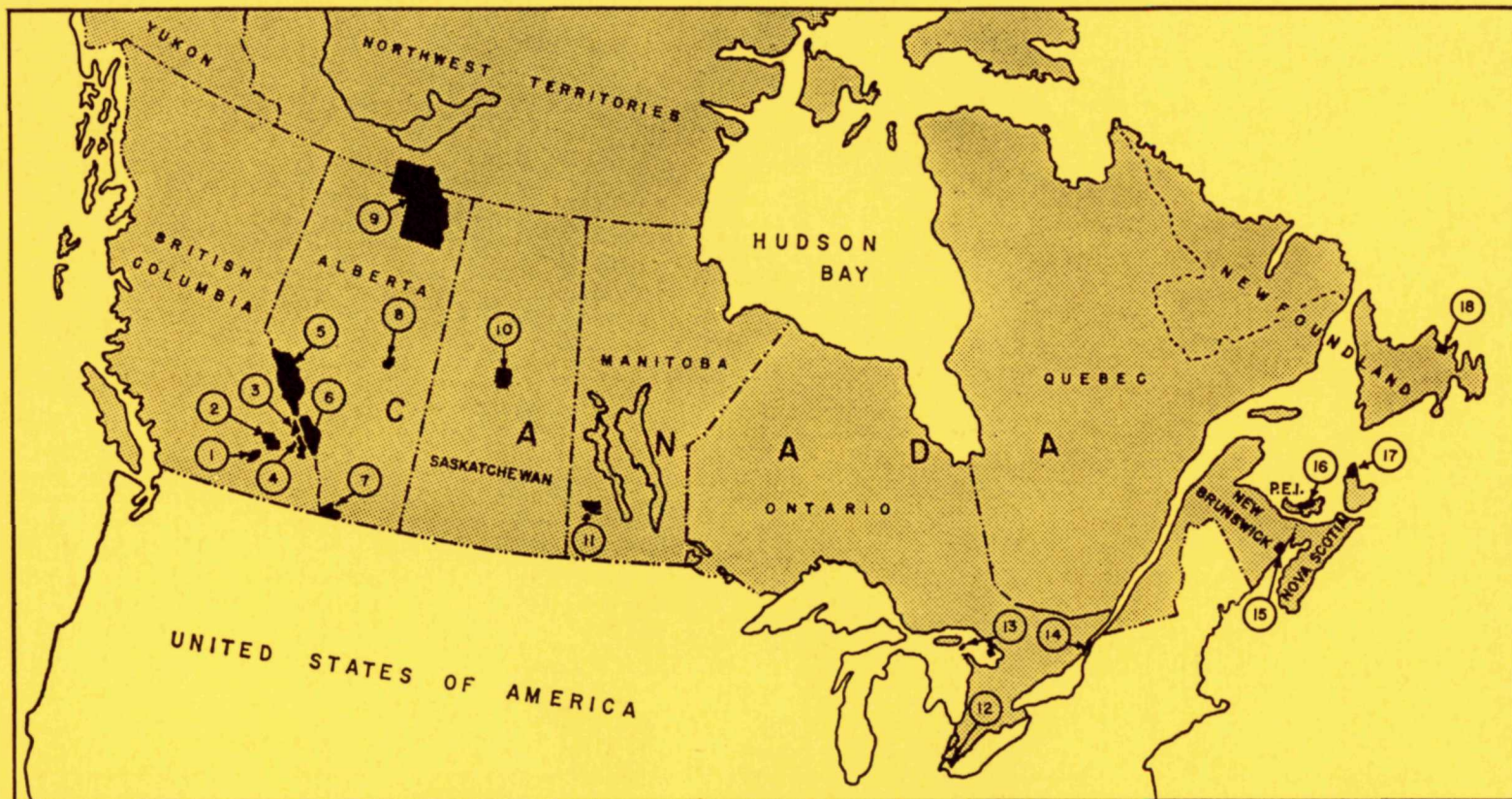
Accommodation is also available in nearby towns, details of which may be obtained from the Newfoundland Tourist Development Office, St. John's Nfld.

Campgrounds

LOCATION	CAPACITY	EQUIPMENT AVAILABLE	WATER SUPPLY	REMARKS
Park Headquarters	90 tents	K4 T-flush	Piped	Children's playground. Laundry, coin-operated washers, showers. Store 1 mi.
<i>Picnic Areas</i>				
Platters Cove	80 persons	T-dry	Well	Village 5 mi. Trout fishing.
Platters Beach	50 persons	S6, T-dry	Piped	Docks accessible only by boat.
South West Arm	40 persons	T-dry	Brook	Village 3 mi. Trout fishing.
Burnt Point	60 persons	T-dry	Spring	Village 3 mi. Trout and cod fishing, swimming.
Newman Sound	100 persons	T-dry	Piped	Nature Trail.

CODE: (A) American Plan (E) European Plan (*) Summer season only (S) Single (D) Double
(C) Cooking facilities.
K—Kitchen Shelter S—Stove E—Electricity for trailers C—Community Building
F—Fireplace T—Toilet.





1. Mount Revelstoke National Park.

2. Glacier National Park.

3. Yoho National Park.

4. Kootenay National Park.

5. Jasper National Park.

6. Banff National Park.

7. Waterton Lakes National Park.

8. Elk Island National Park.

9. Wood Buffalo National Park.

10. Prince Albert National Park.

11. Riding Mountain National Park.

12. Point Pelee National Park.

13. Georgian Bay Islands National Park.

14. St. Lawrence Islands National Park.

15. Fundy National Park.

16. Prince Edward Island National Park.

17. Cape Breton Highlands National Park.

18. Terra Nova National Park.