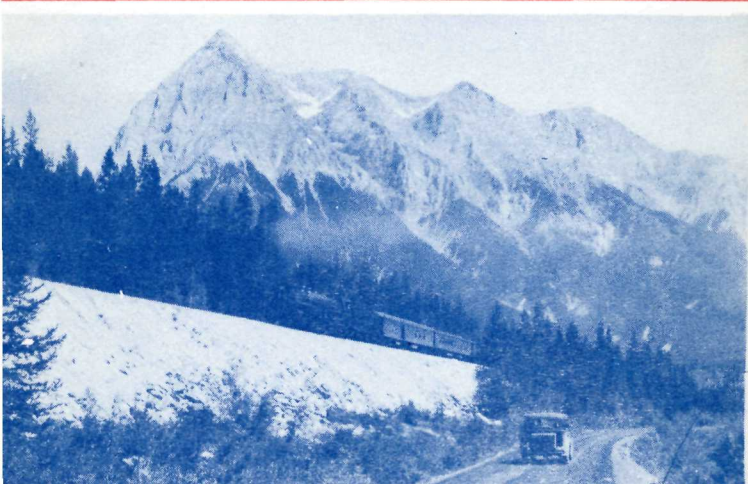


Swordfishing boats in South Ingonish Harbour are an interesting feature of Cape Breton Highlands National Park



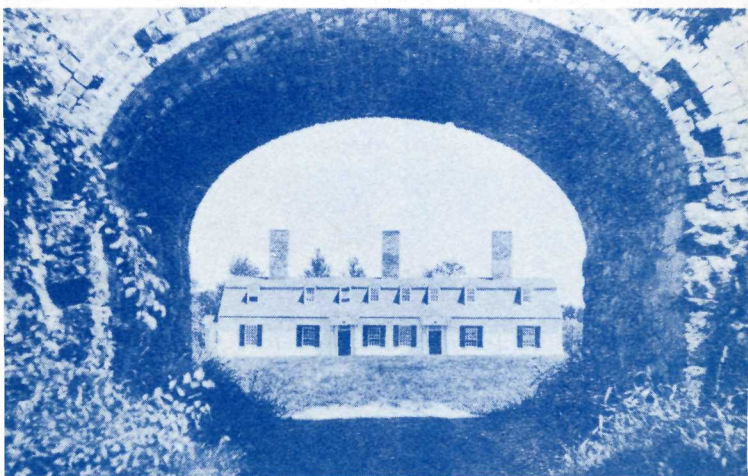
The charm of St. Lawrence Islands National Park is realized on motorboat trips through the picturesque channels



Mount Chancellor rises above a transcontinental railway line and the Trans-Canada Highway in Yoho National Park



Above—A campsite in Prince Albert National Park  
Below—Some of the buffalo in Elk Island National Park



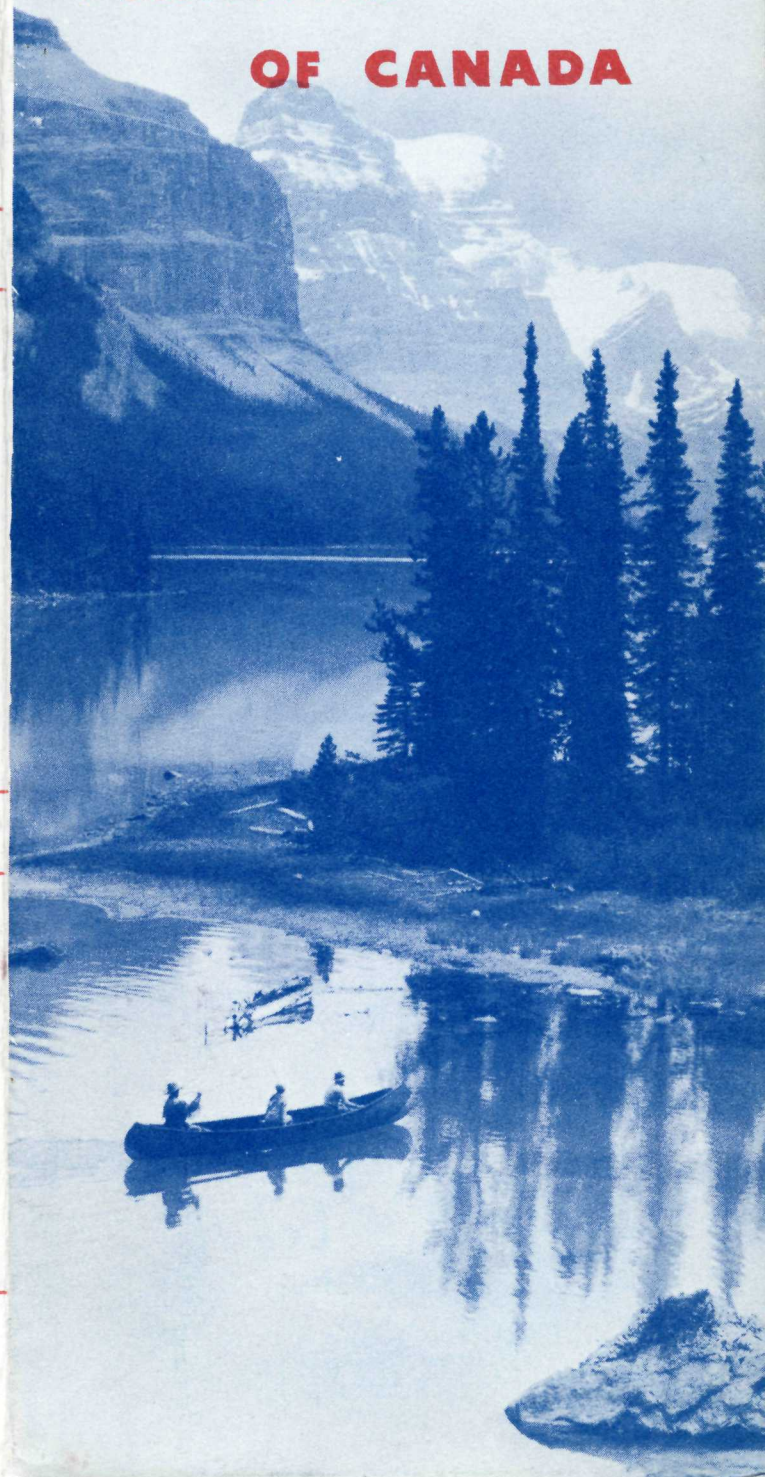
One of the points of interest to visitors at Fort Anne National Historic Park is the "Officers' Quarters"



DEPARTMENT OF MINES AND RESOURCES  
LANDS, PARKS AND FORESTS BRANCH  
NATIONAL PARKS BUREAU OTTAWA, CANADA

Printed in Canada

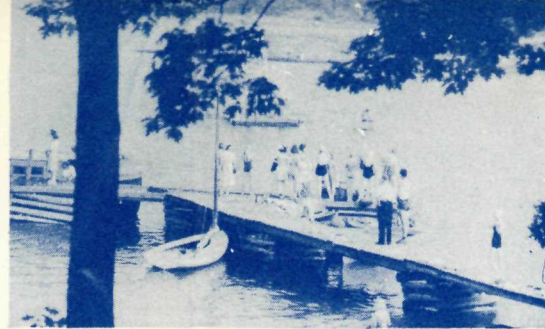
# THE *National Parks* OF CANADA







Ideal camp-sites for tents or trailers are available in Point Pelee National Park



Water sports are a feature of holiday life in Georgian Bay Islands National Park



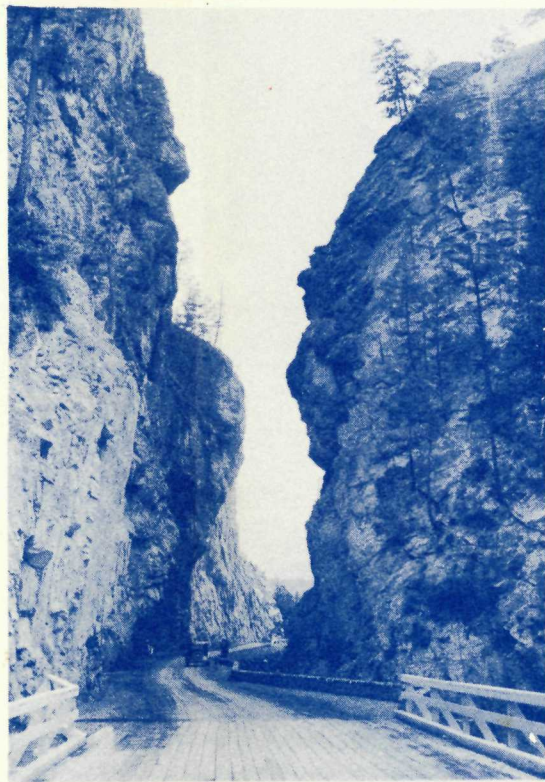
One of the beauty spots along the Glen Beag Drive in Riding Mountain National Park



Alpine climbers make their way across one of the glaciers in Glacier National Park



The golf links in Prince Edward Island National Park skirt the "Lake of Shining Waters"



Sinclair Canyon in Kootenay National Park is one of the most spectacular in the Rockies



Athabasca Falls in Jasper National Park are reached over the Banff-Jasper Highway



Many points of interest in Waterton Lakes National Park are accessible over saddle-pony trails



Heather Lake has an unique setting on the summit of Mount Revelstoke National Park



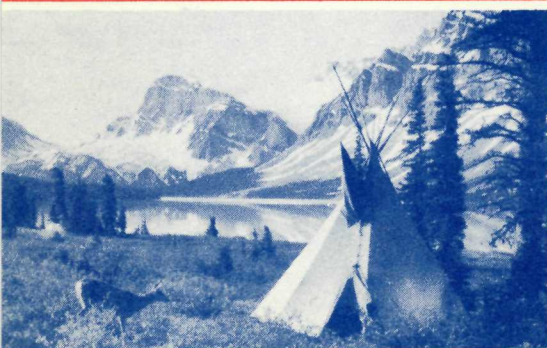
Miles of snow-covered slopes in the Canadian Rockies offer ideal ski-ing opportunities



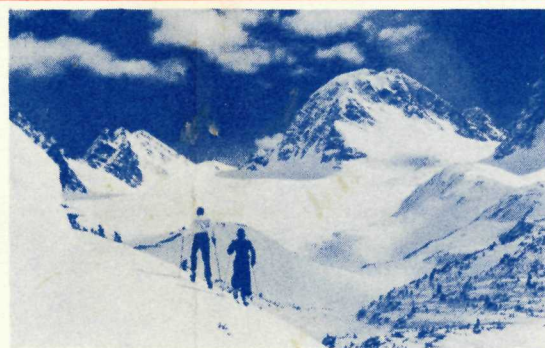
A museum stands guard over excavated ruins at Fortress of Louisbourg National Historic Park



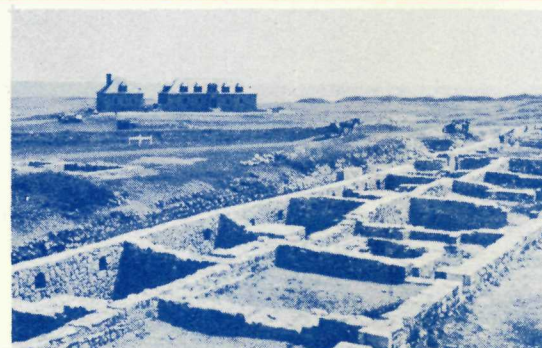
Lake-shore drives in Prince Albert National Park add interest to the day's outing



Curiosity gets the better of this mule deer at Bow Lake in Banff National Park



Miles of snow-covered slopes in the Canadian Rockies offer ideal ski-ing opportunities



A museum stands guard over excavated ruins at Fortress of Louisbourg National Historic Park



Getting ready for a day's angling at beautiful Lake O'Hara in Yoho National Park





Visitors to Prince Edward Island National Park will enjoy the fine beaches on the Gulf of St. Lawrence



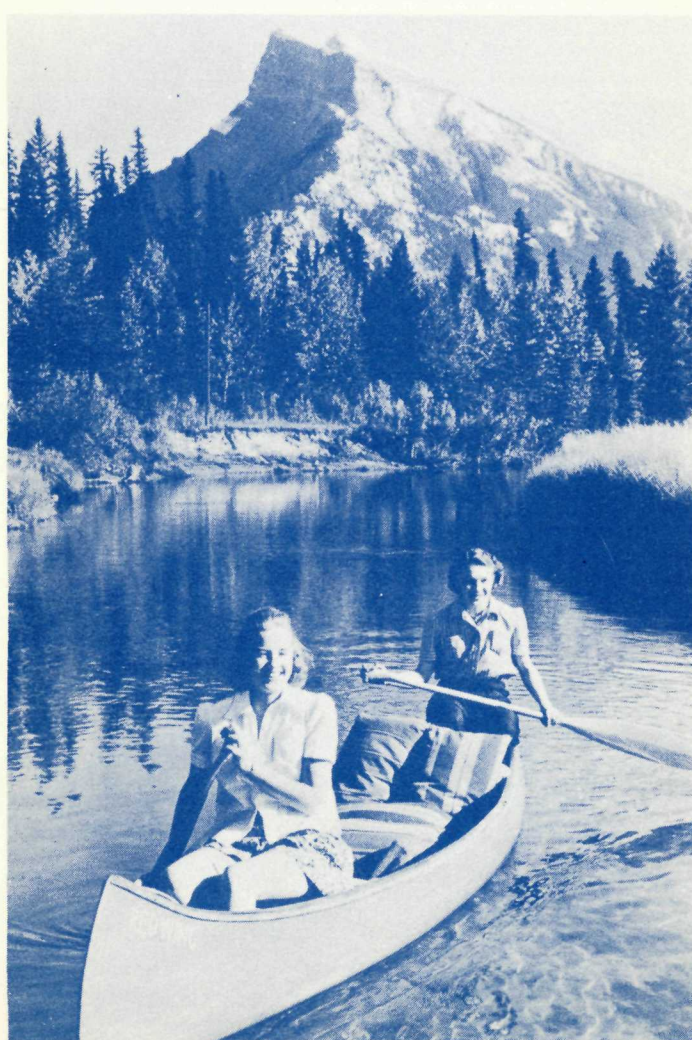
Trail Riders in Jasper National Park pause on Oldfort Hill to view Lac Beauvert and Athabaska Valley



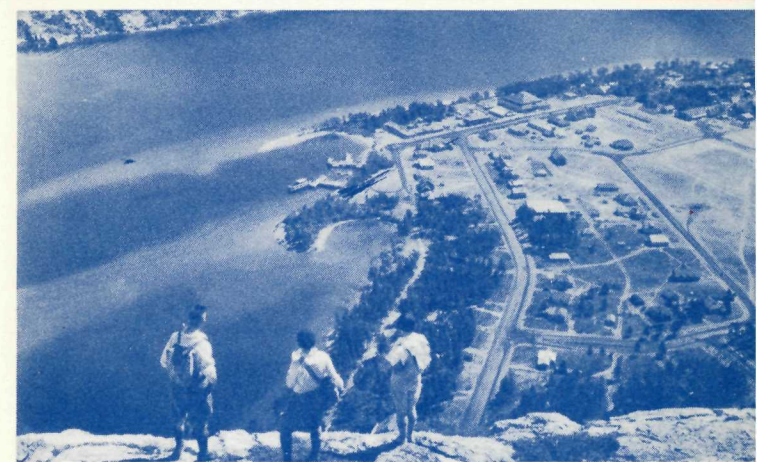
Holing out on the 10th green of the beautiful golf links in Cape Breton Highlands National Park



The Banff-Jasper Highway provides a spectacular drive within continual sight of mountains, glaciers, or waterfalls



Paddling along the quiet waters of Echo Creek is a favourite summer pastime in Banff National Park



Hikers in Waterton Lakes National Park enjoy the view of Waterton Park Village from Mount Crandell



Speckled trout abound in the fast-flowing waters of Maligne River in Jasper National Park



Tennis competition is always keen on the well-kept clay courts in Riding Mountain National Park



# THE NATIONAL PARKS OF CANADA

Established to preserve forever the scenic beauty, native wild life, and natural wonders of the Dominion, Canada's National Parks contain all the requisites of an ideal vacation. Extending from the Atlantic Coast of Nova Scotia to the mountain regions of British Columbia, this chain of national playgrounds offers the enjoyment of majestic mountains, noble valleys, sparkling lakes, foaming streams, virgin forests, and picturesque stretches by the sea.

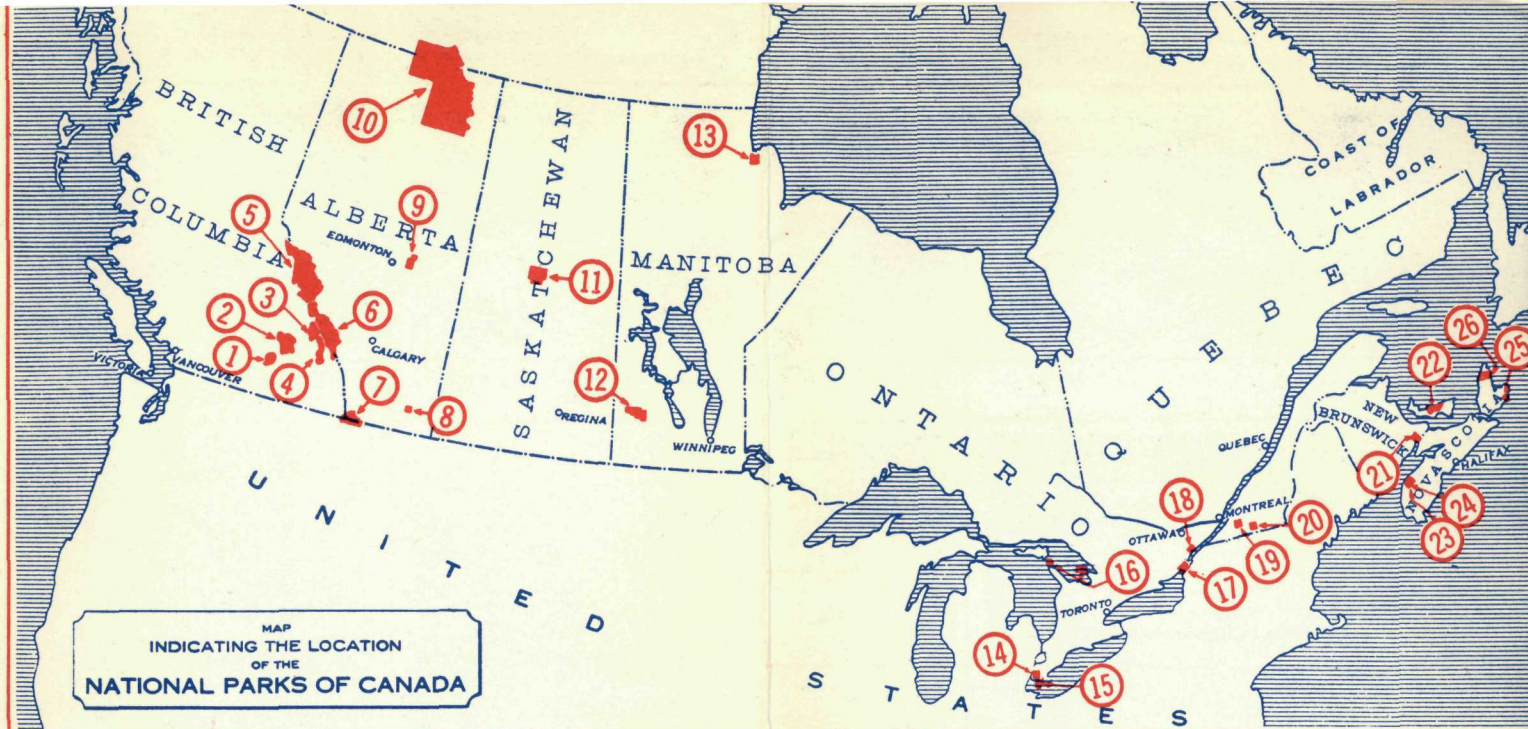
Hundreds of miles of roads and trails which open cut to the visitor lead to thrilling sights and new experiences. Summer and winter sports, augmented by modern facilities, have an added zest in picturesque surroundings. Historic places excite the imagination and recall stirring episodes in Canada's storied past. In these vast areas may also be enjoyed the peace and quiet of wilderness regions, where the cares of everyday life may be forgotten, and health and happiness restored by association with primitive nature.

In the great parks of the Rocky and Selkirk Mountains are regions of alpine grandeur unsurpassed in the world. Huge peaks, eternally capped with snow or ice, stand silhouetted against the sky or mirrored in mountain lakes as clear as crystal and as smooth as glass. Great glaciers creep slowly down from frozen sources; waterfalls cascade riotously down mountainsides, and rivers rush swiftly along on their way to the sea. On the lower slopes of the mountains grow evergreen forests, and higher, in the alplands and passes, one may walk knee-deep through meadows of colourful wild-flowers.

Eastward, in the prairie regions of the Dominion, are parks embracing unexpected areas of forested lakeland. Here scores of lakes, interconnected by numerous streams and bordered by sand beaches, form a paradise for the canoeist and fisherman. In Eastern Canada are lakeshore and island park units, endowed by Nature with advantages that enhance their reputation as outstanding recreational and camping areas. Along the coasts of the Atlantic Ocean and Gulf of St. Lawrence remarkable seashore areas have been set aside as National Parks. Beaches beaten smooth and hard by the surf, miles of rugged coastline with a mountain background, and quaint fishing villages afford a vacation land unique in America.

All National Parks are wild life sanctuaries, where wild animal, bird, and plant life are rigidly protected, and "shooting" may be done only with a camera. As a result of this protection, many of the animals have lost their inherent fear of man, and a trip along the roads or trails may yield glimpses of bear, deer, moose, elk, mountain sheep or goat, and other interesting creatures of the wild. In Alberta special parks have been set aside for the protection of the bison or buffalo, the former "monarch of the plains," and the pronghorned antelope, species that less than half a century ago were threatened with complete extinction.

In the following paragraphs will be found a complete list of the National Parks of Canada, their area, and location:



**1. MOUNT REVELSTOKE, British Columbia.** Rolling mountain-top plateau on west slope of the Selkirk Mountains. Accessible by motor road. Established 1914; area, 100 square miles.

**2. GLACIER, British Columbia.** Superb alpine region in heart of Selkirk Mountains. Snow-capped peaks, glaciers, luxuriant flora. Established 1886; area, 521 square miles.

**3. YOHO, British Columbia.** On west slope of Rockies. High peaks, beautiful lakes, Yoho and Kicking Horse Valleys. Established 1886; area, 507 square miles.

**4. KOOTENAY, British Columbia.** Encloses Vermilion-Sinclair section of Banff-Windermere Highway in Rockies. Broad valleys, deep canyons, hot mineral springs. Established 1920; area, 587 square miles.

**5. JASPER, Alberta.** Immense playground and game sanctuary. Majestic peaks, ice-fields, beautiful lakes, and famous resort, Jasper. Summer and winter sports; golf. Established 1907; area, 4,200 square miles.

**6. BANFF, Alberta.** Magnificent scenic playground in central Rockies. Noted resorts, Banff and Lake Louise. Summer and winter sports centre; golf; big game sanctuary. Established 1885; area, 2,585 square miles.

**7. WATERTON LAKES, Alberta.** Canadian section, Waterton-Glacier International Peace Park. Mountain playground with colourful peaks, varied flora and fauna; golf. Established 1895; area, 220 square miles.

**8. NEMISKAM, Alberta.** Fenced preserve for pronghorned antelope. Reserved 1915. Established 1922; area, 8.5 square miles.

**9. ELK ISLAND, Alberta.** Fenced preserve containing large herd of buffalo; also deer, elk, and moose. Recreational and camping resort; golf. Reserved 1906; established 1913; area, 51.2 square miles.

**10. WOOD BUFFALO, Alberta, and N.W.T.** Immense region of forests and open plains west of Slave River between Athabasca and Great Slave Lakes. Large herd of buffalo and other big and small game. Established 1922; area, 17,300 square miles.

**11. PRINCE ALBERT, Saskatchewan.** Forested lakeland interlaced with numerous streams. Summer resort and recreational area; golf. Established 1927; area, 1,494 square miles.

**12. RIDING MOUNTAIN, Manitoba.** Playground and game preserve on summit of Manitoba escarpment. Summer resort and recreational area; golf. Established 1929; area, 1,148 square miles.

**13. FORT PRINCE OF WALES, Manitoba.** National Historic Park at Churchill. Ruins of fort built 1733-1771 by English to control Hudson Bay. Established 1941; area, 50 acres.

**14. FORT MALDEN, Ontario.** National Historic Park with museum at Amherstburg. Defence post built by English, 1797-99 on Detroit River. Established 1941; area, 3 acres.

**15. POINT PEELE, Ontario.** Recreational area on Lake Erie, with fine beaches and unique flora. Resting point for migratory birds. Established 1918; area, 6.04 square miles.

**16. GEORGIAN BAY ISLANDS, Ontario.** Thirty islands in Georgian Bay. Unique formations on Flowerpot Island. Recreational area. Established 1929; area, 5.37 square miles.

**17. ST. LAWRENCE ISLANDS, Ontario.** Mainland area, and thirteen islands in "Thousand Islands" group with recreational facilities. Reserved 1904; established 1914; area, 185.6 acres.

**18. FORT WELLINGTON, Ontario.** National Historic Park with museum at Prescott. Defence post built on St Lawrence River 1812-13. Established 1941; area, 8½ acres.

**19. FORT CHAMBLY, Quebec.** National Historic Park with museum at Chamby Canton. Fort built by French 1665 on Richelieu River; rebuilt 1709-11. Established 1941; area, 2½ acres.

**20. FORT LENNOX, Quebec.** National Historic Park with museum on Ile-aux-Noix, Richelieu River, near St. Johns. Fortifications built 1812-27 by English. Established 1941; area, 210 acres.

**21. FORT BEAUSEJOUR, New Brunswick.** National Historic Park with museum near Sackville. Site of French fort erected 1751-55. Established 1926; area, 59 acres.

**22. PRINCE EDWARD ISLAND.** Strip 25 miles long on north shore of island province. Recreational area with fine beaches; golf. Established 1937; area, 7 square miles.

**23. PORT ROYAL, Nova Scotia.** National Historic Park at Lower Granville. Restoration of the "Habitation" or first fort built 1605 by Champlain and De Monts. Established 1941; area, 17 acres.

**24. FORT ANNE, Nova Scotia.** National Historic Park with museum at Annapolis Royal. Fort associated with early Acadian history. Established 1917; area, 31 acres.

**25. FORTRESS OF LOUISBOURG, Nova Scotia.** National Historic Park with museum near Louisburg. Ruins of walled city erected by the French 1720-40. Established 1941; area, 339½ acres.

**26. CAPE BRETON HIGHLANDS, Nova Scotia.** Rugged Cape Breton Island coastline with mountain background. Fine seascapes from highway; golf. Established 1936; area, 390 square miles.

*Additional information concerning any of these parks may be obtained on application from the National Parks Bureau, Department of Mines and Resources, Ottawa, Canada.*