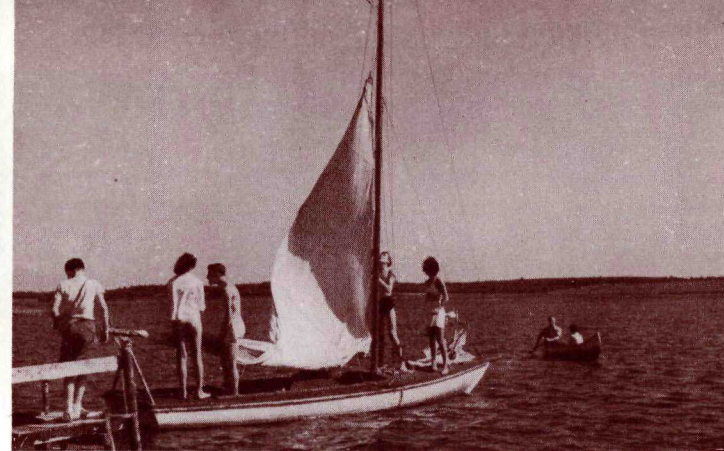


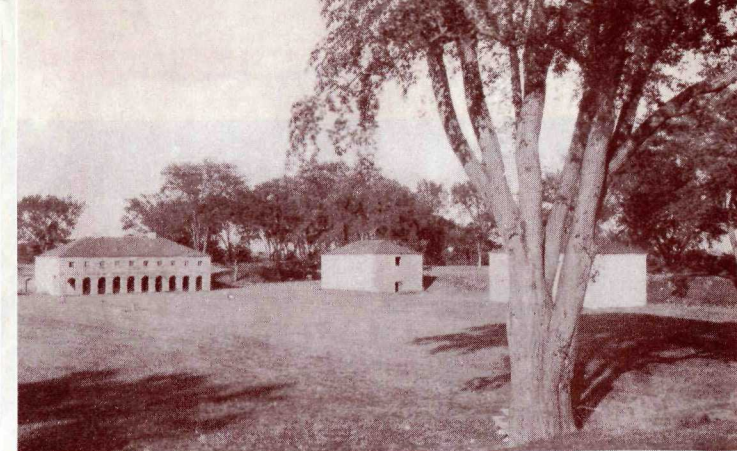
Photographing the Contestants  
Prince Edward Island National Park



Hoisting sail at Brackley Beach  
Prince Edward Island National Park



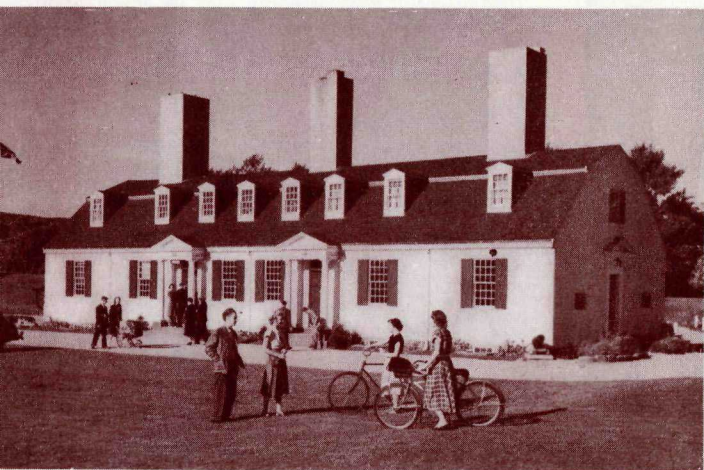
Sword-fishing boats South Harbor, Ingonish  
Cape Breton Highlands National Park



Fort Lennox National Historic Park



An early morning ride  
Riding Mountain National Park



Fort Anne National Historic Park



A Winter Wonderland  
Mt. Revelstoke National Park



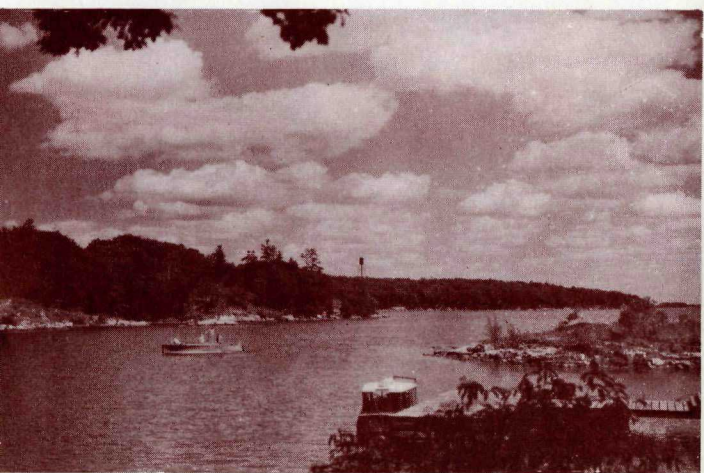
Flowerpot Island  
Georgian Bay Islands National Park



Part of the Buffalo Herd  
Elk Island National Park



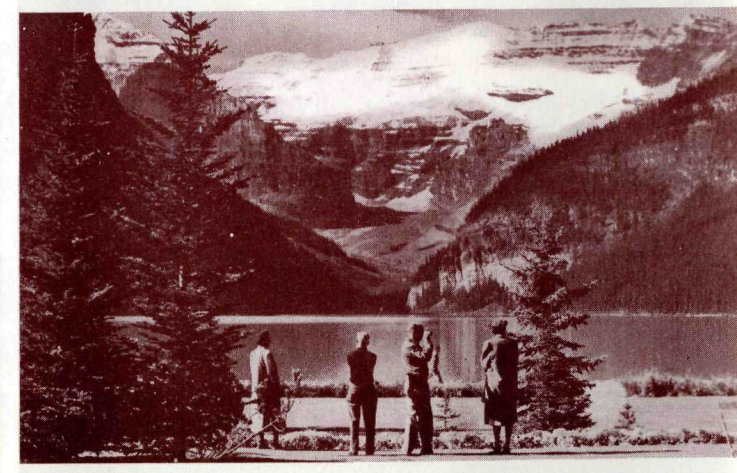
Tokumm Creek, Marble Canyon  
Kootenay National Park



Bass fishing near Cedar Island  
St. Lawrence Islands National Park



Gateway to Point Pelee National Park

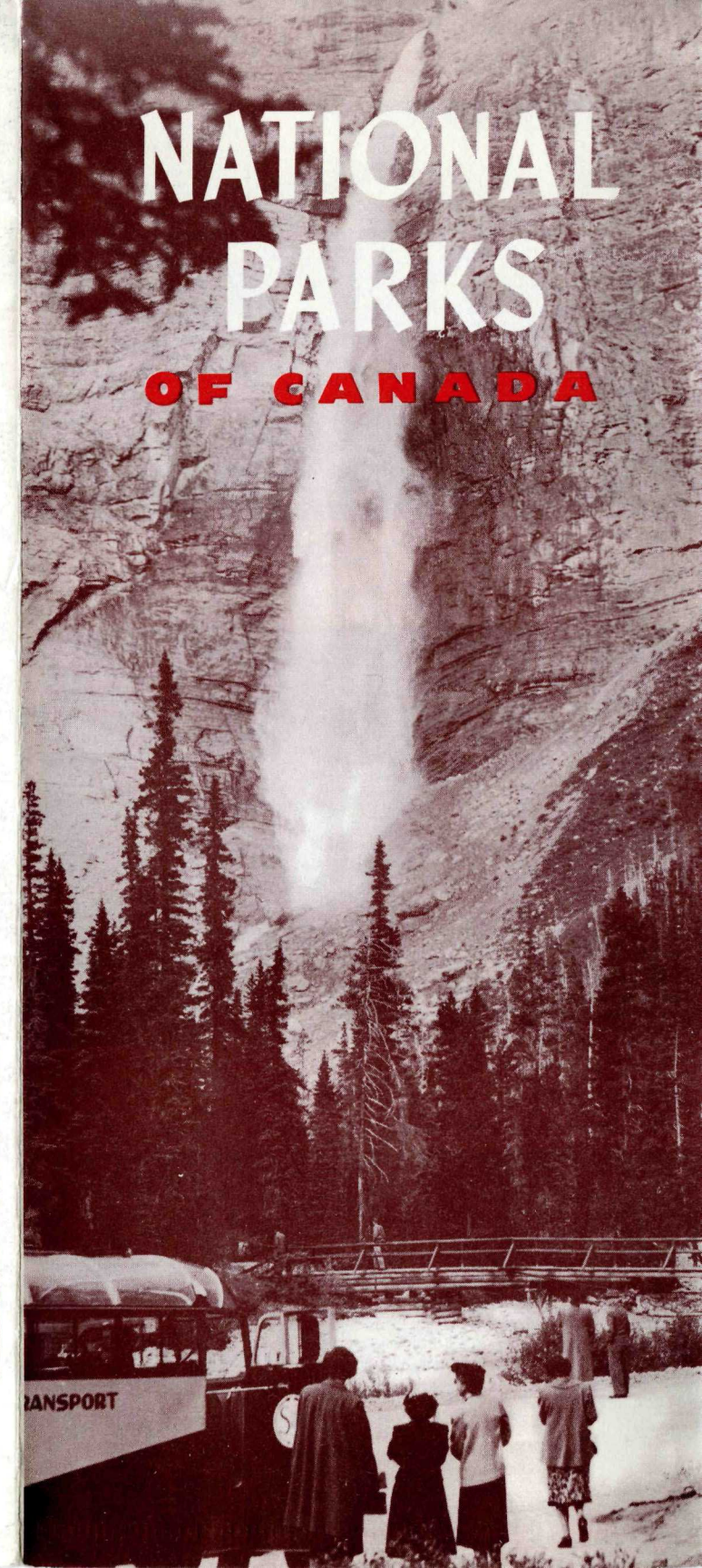


Lake Louise and Victoria Glacier  
Banff National Park



Mountain Climbers in Ice Cave—Illecillewaet Glacier  
Glacier National Park

**NATIONAL PARKS SERVICE**  
Lands and Development Services Branch  
Department of Mines and Resources — Ottawa, Canada





## FOREWORD

ESTABLISHED to preserve forever the scenic beauty, native wildlife, and natural wonders of the landscape, Canada's National Parks contain all the requisites of an ideal vacation. Extending from the mountain regions of British Columbia to the Atlantic Coast of Nova Scotia, this chain of national playgrounds offers the enjoyment of majestic mountains, flower-bedecked valleys, sparkling lakes, foaming streams, virgin forests, and picturesque stretches by the sea.

Hundreds of miles of roads and trails lead to thrilling sights and new experiences. Summer and winter sports, augmented by modern facilities, have an added zest in picturesque surroundings. Historic places excite the imagination and recall stirring episodes in Canada's storied past. In these vast areas may also be enjoyed the peace and quiet of wilderness regions, where the cares of everyday life may be forgotten, and health and happiness restored by association with primitive nature.

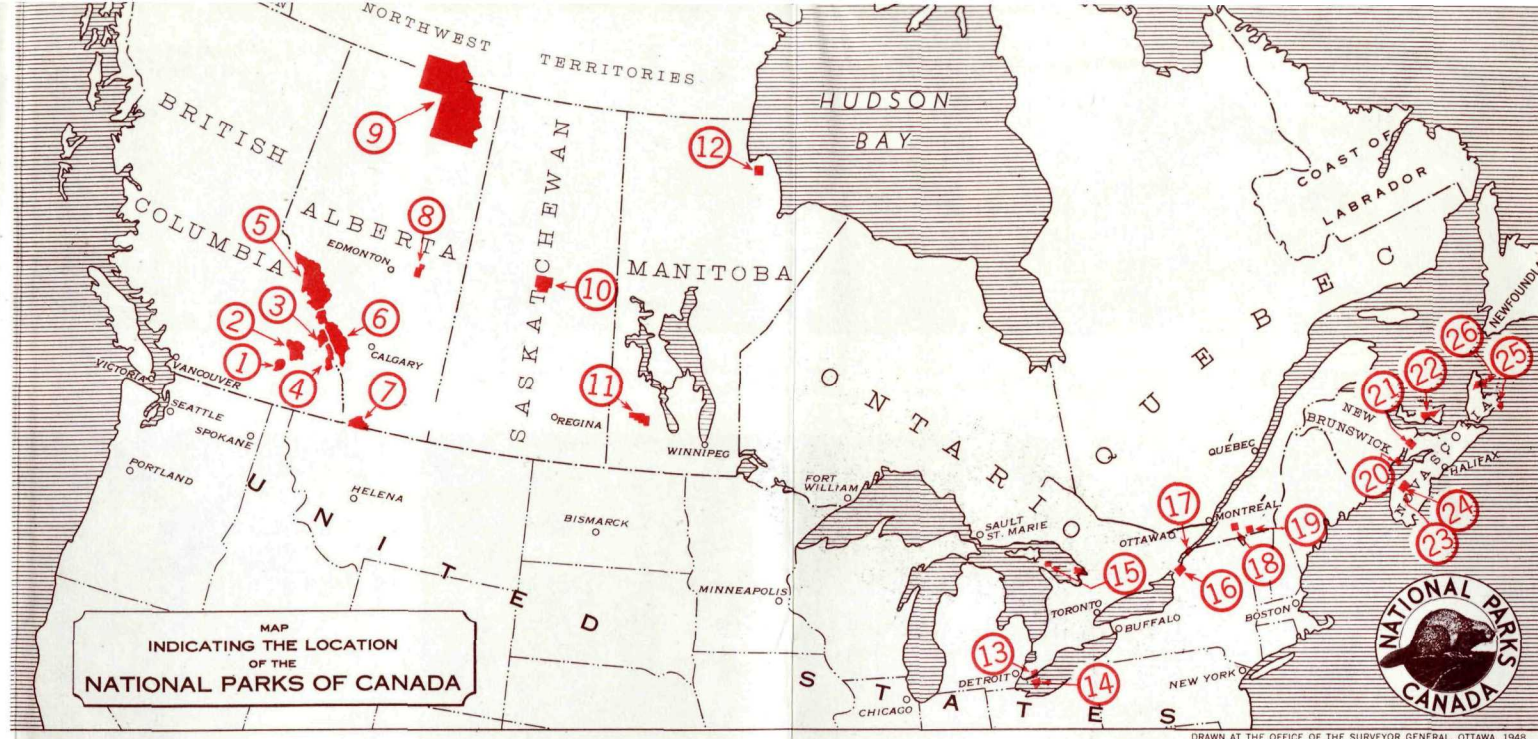
In the great parks of the Selkirk and Rocky Mountains are regions of breath-taking alpine grandeur. Huge peaks, eternally capped with snow or ice, stand silhouetted against the sky, or mirrored in mountain lakes as clear as crystal and as smooth as glass. Great glaciers creep slowly down from immense ice-fields, waterfalls cascade riotously down mountainsides, and rivers rush swiftly along on their way to the sea. On the lower slopes of the mountains grow evergreen forests, and higher, in the alplands and passes, one may walk knee-deep through meadows of colourful wild-flowers.

Eastward, in the prairie regions, are parks embracing unexpected areas of forested lakeland. Here scores of lakes, interconnected by numerous streams and bordered by sand beaches, form a paradise for the canoeist and fisherman. In Eastern Canada are lakeshore and island park units, endowed by Nature with advantages that enhance their reputation as outstanding recreational and camping areas. Along the coasts of the Gulf of St. Lawrence, the Bay of Fundy, and the Atlantic Ocean remarkable seashore areas have been set apart as national parks. Beaches beaten smooth and hard by the surf, miles of rugged coastline with a mountain background, and quaint fishing villages afford a vacation land unique in North America.

All national parks are wildlife sanctuaries, where wild animal, bird, and plant life are rigidly protected. As a result of this protection, many of the animals have lost their inherent fear of man, and a trip along the roads or trails may yield studies of deer, moose, elk, bear, mountain sheep or goat, and other interesting creatures of the wild. In Alberta a special park has been set aside primarily for the protection of the bison or buffalo, the former "monarch of the plains", a species that less than half a century ago was threatened with extinction.

In the following paragraphs will be found a complete list of the National Parks of Canada, their area, and location:

Front Cover Photo:—Takakkaw Falls, Yoho National Park



### NATIONAL PARKS OF CANADA

1. **MOUNT REVELSTOKE, British Columbia.** Rolling mountain-top plateau on west slope of Selkirk Mountains. Established 1914; area, 100 square miles.
2. **GLACIER, British Columbia.** Superb alpine region in Selkirk Mountains. Great peaks, glaciers, forests. Established 1886; area, 521 square miles.
3. **YOHO, British Columbia.** On west slope of Rockies. High peaks, beautiful lakes. Yoho and Kicking Horse Valleys. Established 1886; area, 507 square miles.
4. **KOOTENAY, British Columbia.** Encloses Vermilion-Sinclair section of the Banff-Windermere Highway in Rockies. Broad valleys, deep canyons, hot mineral springs. Established 1920; area, 543 square miles.
5. **JASPER, Alberta.** Mountain playground and game sanctuary. Contains majestic peaks, ice-fields, beautiful lakes, and famous resort, Jasper. Summer and winter sports. Established 1907; area, 4,800 square miles.
6. **BANFF, Alberta.** Magnificent scenic playground in central Rockies. Contains noted resorts, Banff and Lake Louise. Summer and winter sports centre; big game sanctuary. Established 1885; area, 2,564 square miles.
7. **WATERTON LAKES, Alberta.** Canadian Section, Waterton-Glacier International Peace Park. Mountain playground with colourful peaks; varied flora and fauna. Established 1895; area, 204 square miles.
8. **ELK ISLAND, Alberta.** Fenced preserve near Edmonton, containing a large herd of buffalo, also deer, elk, and moose. Recreational and camping resort. Established 1913; area, 75.2 square miles.
9. **WOOD BUFFALO, Alberta and N.W.T.** Immense region of forests and open plains between Athabasca and Great Slave Lakes. Contains a large herd of buffalo and other game. Established 1922; area, 17,300 square miles.
10. **PRINCE ALBERT, Saskatchewan.** Forested region dotted with lakes and interlaced with streams. Summer resort and recreational area. Established 1927; area, 1,496 square miles.
11. **RIDING MOUNTAIN, Manitoba.** Playground and game sanctuary on summit of Manitoba escarpment. Fine lakes; summer resort and recreational area. Established 1929; area 1,149.04 square miles.
12. **FORT PRINCE OF WALES, Manitoba.** National Historic Park at Churchill. Ruins of fort built 1733-71. Established 1941; area, 50 acres.
13. **FORT MALDEN, Ontario.** National Historic Park with museums at Amherstburg. Site of defence post built 1797-99. Established 1941; area, 5 acres.

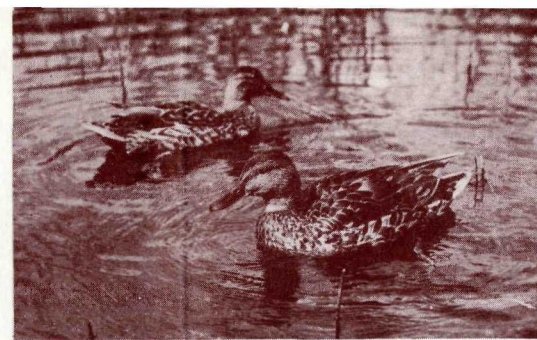
14. **POINT PEELE, Ontario.** Recreational area on Lake Erie. Camp-grounds, remarkable beaches, southern flora. Resting place for migratory birds. Established 1918; area, 6.04 square miles.
15. **GEORGIAN BAY ISLANDS, Ontario.** Recreational and camping area. Unique pillars on Flowerpot Island. Established 1920; area, 5.40 square miles.
16. **ST. LAWRENCE ISLANDS, Ontario.** Mainland area, and 13 islands in "Thousand Islands." Recreational facilities. Established 1914; area, 185.6 acres.
17. **FORT WELLINGTON, Ontario.** National Historic Park with museum at Prescott. Defence post built 1812-13. Established 1941; area, 8.5 acres.
18. **FORT CHAMBLY, Quebec.** National Historic Park with museum at Chambly. First built by French. 1665, Established 1941; area, 2.5 acres.
19. **FORT LENNOX, Quebec.** National Historic Park on Ile-aux-Noix in Richelieu River, near St. Johns. Established 1941; area, 210 acres.
20. **FUNDY, New Brunswick.** A national park area is in course of development. Located on the Bay of Fundy between the cities of Saint John and Moncton. Forested region, game sanctuary, rugged terrain. Area, approximately 79.5 square miles.
21. **FORT BEAUSEJOUR, New Brunswick.** National Historic Park with museum near Sackville. Site of early French fort. Established 1926; area, 81.3 acres.
22. **PRINCE EDWARD ISLAND.** Strip 25 miles long on north shore of island province. Recreational area; fine beaches. Established 1937; area, 7 square miles.
23. **PORT ROYAL, Nova Scotia.** National Historic Park at Lower Granville. Restoration of "Habitation" or first fort built in 1605 by Champlain, De Monts, and Poutrincourt. Established 1941; area, 17 acres.
24. **FORT ANNE, Nova Scotia.** National Historic Park with museum at Annapolis Royal. Well-preserved earthworks. Established 1917; area, 31 acres.
25. **FORTRESS OF LOUISBOURG, Nova Scotia.** National Historic Park with museum near Louisbourg. Ruins of walled city erected by the French 1720-40. Interesting excavations. Established 1941; area, 340 acres.
26. **CAPE BRETON HIGHLANDS, Nova Scotia.** Rugged Atlantic coastline with mountain background. Fine seascapes from park highway. Recreational opportunities. Established 1936; area, 390 square miles.

For additional information concerning any of these parks write to  
NATIONAL PARKS SERVICE, Department of Mines and Resources, Ottawa, Canada.

PRINTED IN CANADA



Lake Trout from Waskesiu  
Prince Albert National Park



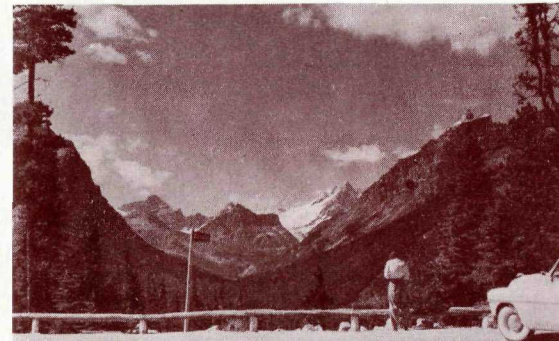
Mallard Ducks at Heart Lake  
Prince Albert National Park



A typical kitchen shelter  
Elk Island National Park



Lac Beauvert and Pyramid Mountain  
Jasper National Park



A Viewpoint on the Banff-Jasper Highway



An inquisitive deer  
New Brunswick National Park



Mount Norquay Chairlift  
Banff National Park



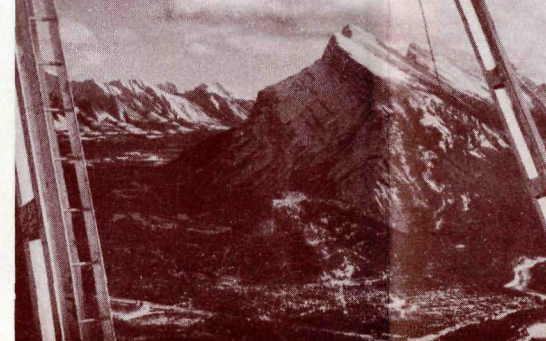
Townsite and Park Headquarters  
Waterton Lakes National Park



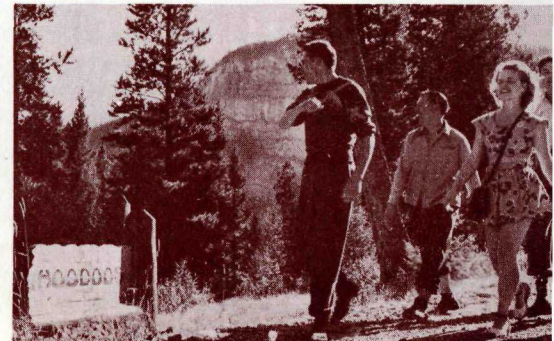
View of the Illecillewaet Glacier  
Glacier National Park



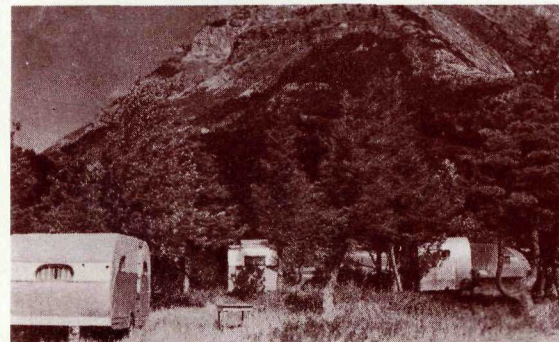
An inquisitive deer  
New Brunswick National Park



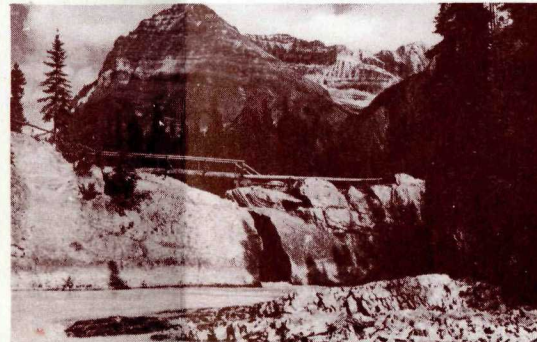
Hikers on the trail  
Banff National Park



Outdoor Roller Skating  
Riding Mountain National Park



Trailer Camp at Crandell Mountain  
Waterton Lakes National Park



Natural Bridge over Kicking Horse River  
Yoho National Park



Part of the Camp-ground  
Prince Albert National Park