

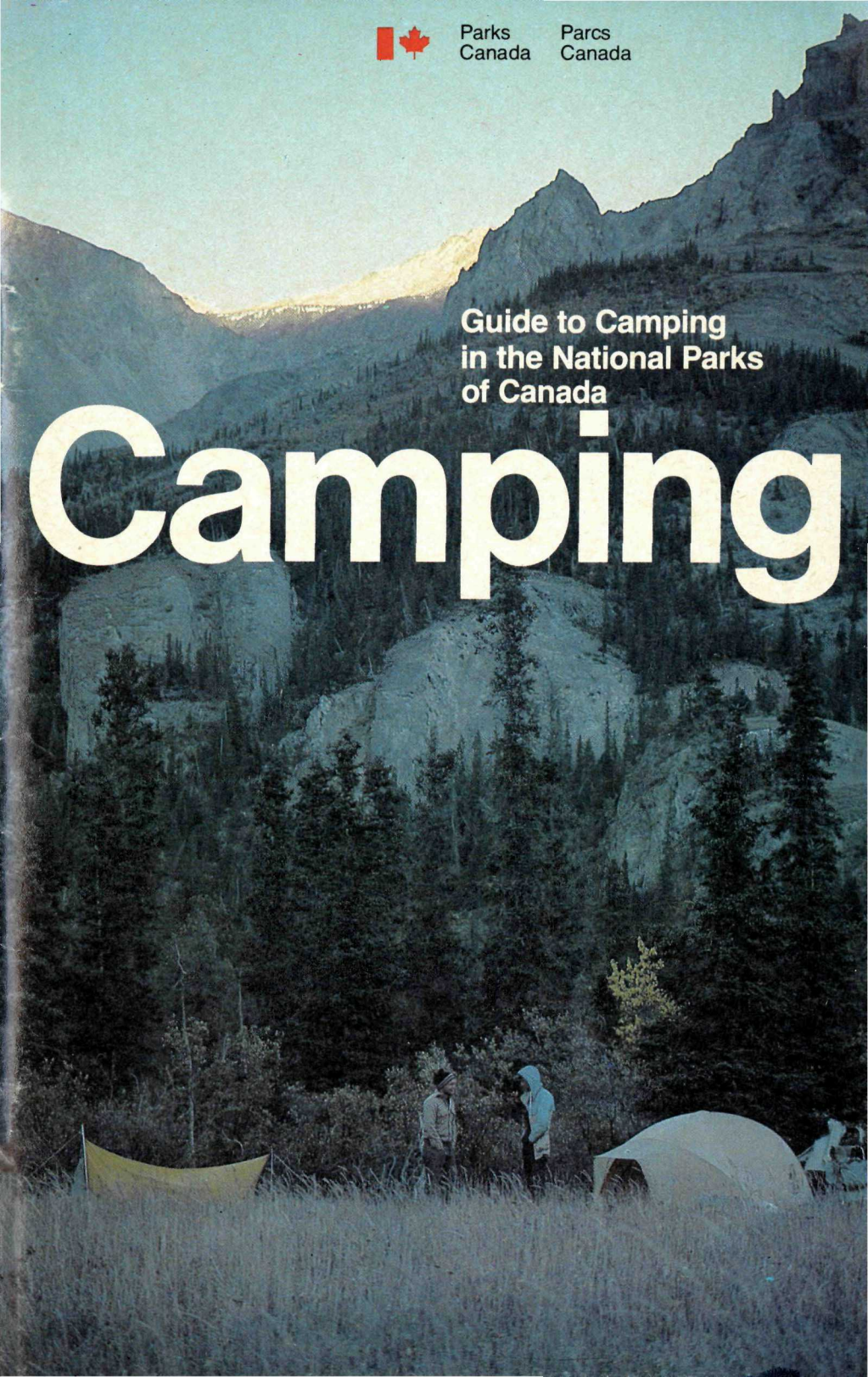



Parks
Canada


Parcs
Canada

Guide to Camping
in the National Parks
of Canada

Camping





LITHO'D IN CANADA 

Published by authority of
the Minister of the Environment
© Minister of Supply and
Services Canada 1981
QS-7065-010-EE-A2
Catalogue No. R 62-102/1981 E
ISBN 0-662-11474-4

Canada

Cette publication est aussi disponible en français.

Cover: Kluane National Park

La Mauricie is a favourite with canoeists

Guide to Camping in the National Parks of Canada

Welcome to the national parks of Canada. Canada is a beautiful country and the national parks preserve some of our most beautiful areas for the enjoyment of all visitors.

The national parks of Canada offer the camper beautiful spots to pitch a tent or park a trailer. Most of the national parks have at least one campground where organized groups can camp together in a

natural setting, and in many the backpacker can trek into wilderness areas and enjoy primitive camping along the way.

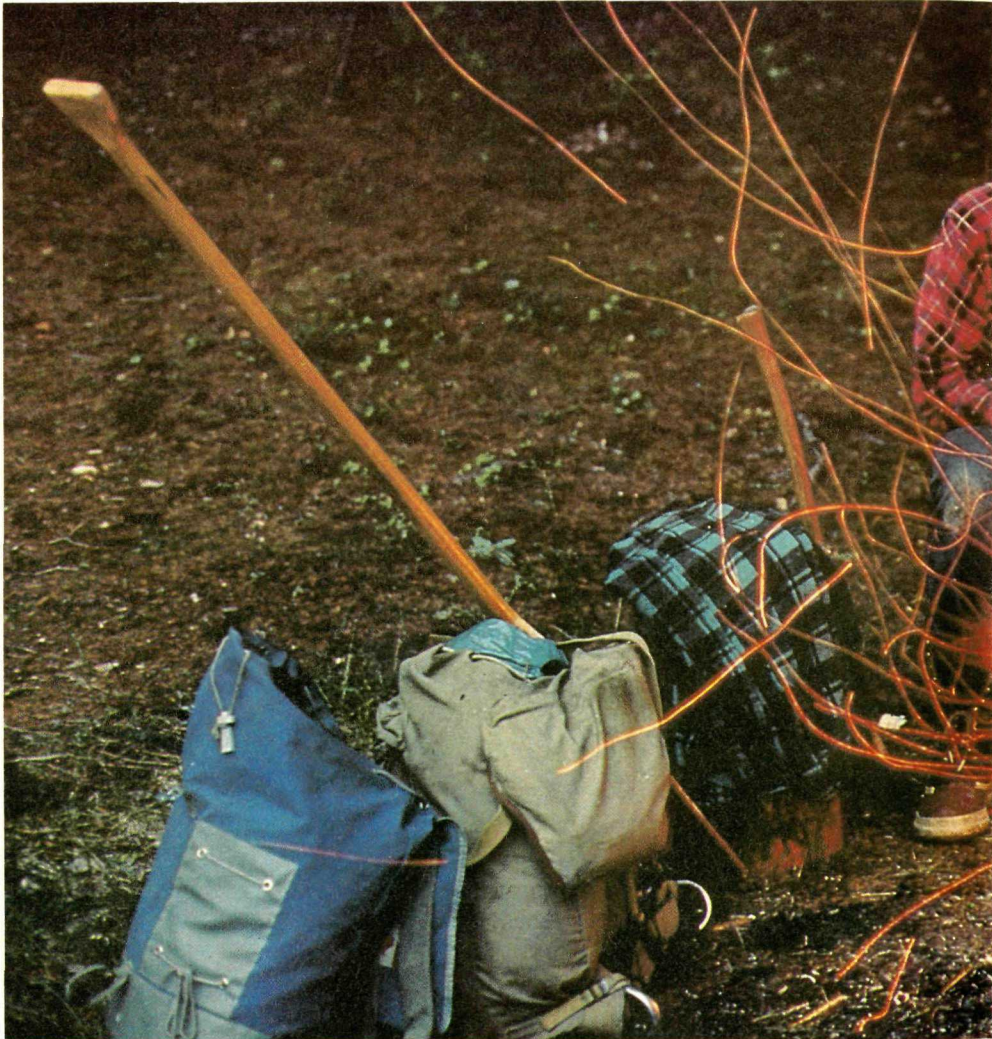
The national park campgrounds range in size from a three-site primitive campground to a 322-site trailer campground equipped with three-way hookups.

There is at least one national park in every province and territory: twelve in Western Canada, six in Central Canada, seven in the Atlantic provinces and three in the true North of the Yukon and Northwest Territories. The Trans-Canada Highway and other major roads provide access routes to most of Canada's 28 national parks.

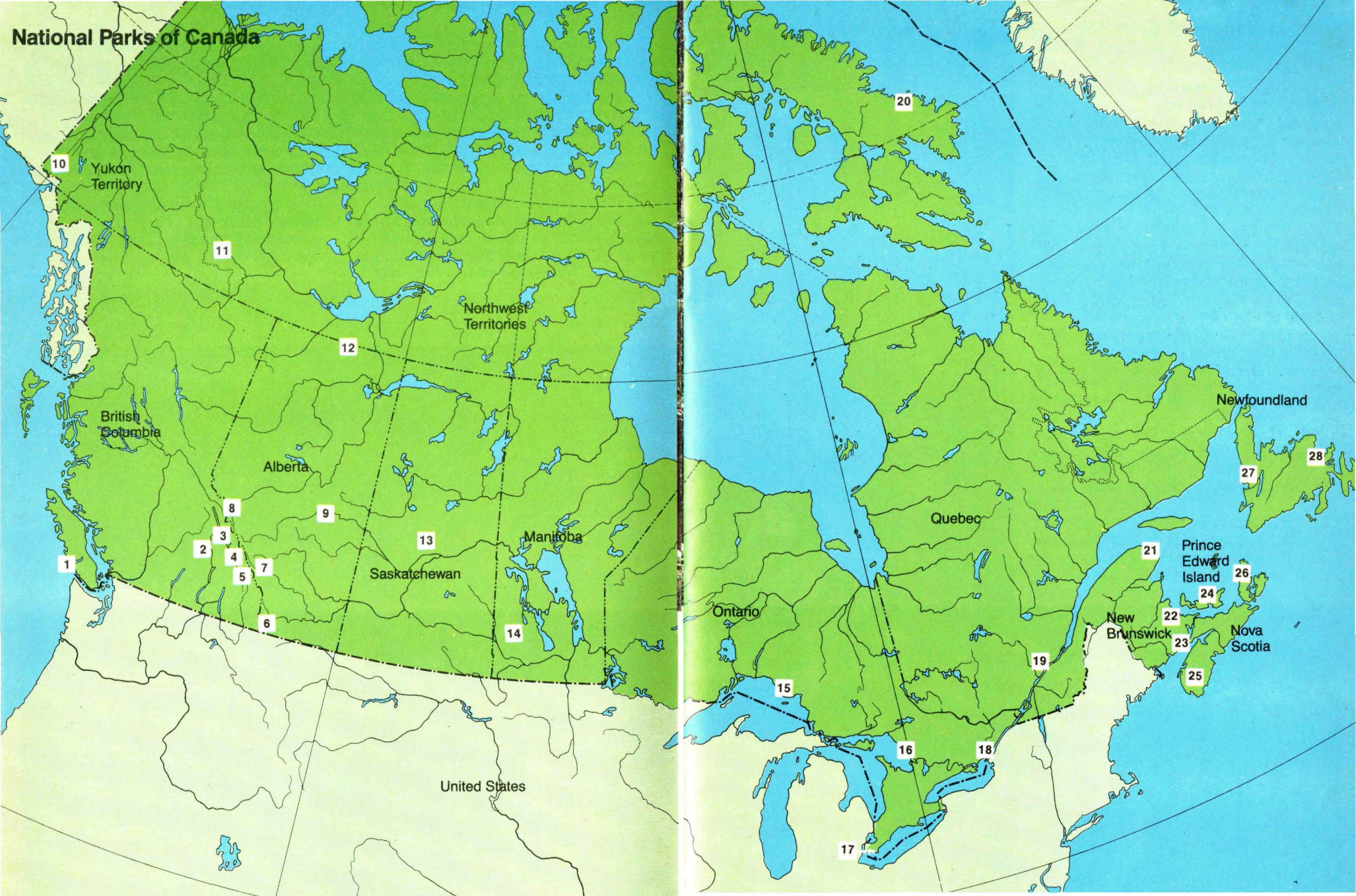
The national parks have been set aside so that Canadians will always have special places of natural beauty and serenity that preserve the original face of our land. They have been dedicated by

Parliament for the benefit, education and enjoyment of the people of Canada for all time. Each of the national parks contains unique, classic examples of distinctive scenery, flora and fauna, which are the natural heritage of all Canadians.

Enjoy the fresh air and take as many pictures as you like, but please leave the flowers and rocks for others to see after you are gone. The best souvenirs you can take home with you are the memories of your visit to one of Canada's national parks.



Primitive campsite along canoe route, Prince Albert National Park



- 1 Pacific Rim
- 2 Mount Revelstoke
- 3 Glacier
- 4 Yoho
- 5 Kootenay
- 6 Waterton Lakes
- 7 Banff

- 8 Jasper
- 9 Elk Island
- 10 Kluane
- 11 Nahanni
- 12 Wood Buffalo
- 13 Prince Albert
- 14 Riding Mountain

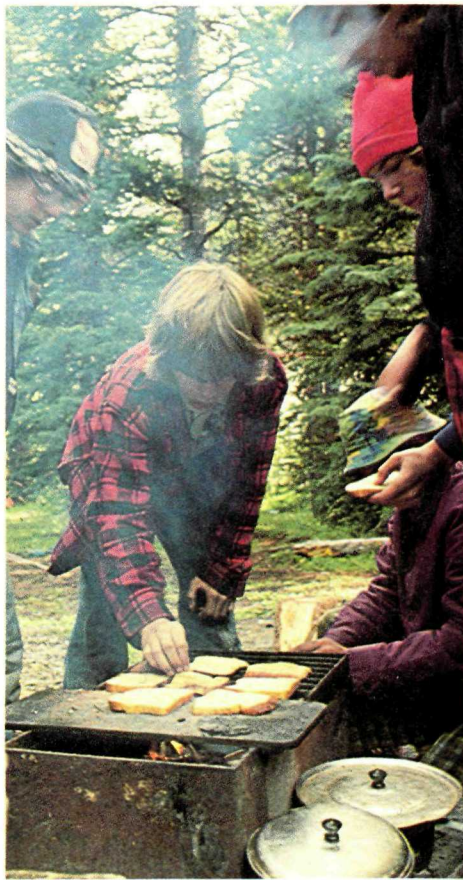
- 15 Pukaskwa
- 16 Georgian Bay Islands
- 17 Point Pelee
- 18 St. Lawrence Islands
- 19 La Mauricie
- 20 Auyuittuq
- 21 Forillon

- 22 Kouchibouguac
- 23 Fundy
- 24 Prince Edward Island
- 25 Kejimikujik
- 26 Cape Breton Highlands
- 27 Gros Morne
- 28 Terra Nova

Information about Camping Facilities

The tables on the following pages describe the type, location, season of operation, and the number of sites and services provided at the different campgrounds in the National Parks of Canada. In many cases there are other, privately operated campgrounds outside or adjacent to the parks.

You can stay a maximum of two weeks at most national park campgrounds. The national park campgrounds are operated on a first-come, first-served basis with no advance reservations. Exceptions to this general rule are the group camps and group tenting areas which are reserved in advance through the park superintendent. Most reservations are made by mail many months in advance.



Breakfast is better outdoors



Gros Morne National Park

Dates of operation are approximate and subject to change. Accurate information is available from each park information office.

Some campgrounds are for tents only, others are for tents or recreational vehicles, some are only for recreational vehicles. Vehicle length of motor homes or trailers may be restricted at some locations.

In some parks there are campgrounds where motor vehicles are not permitted and access is only on foot. Primitive campgrounds are located near hiking trails in the backcountry areas of many parks.

Backpackers are asked to pack-out garbage and to leave the areas as undisturbed as possible.

A description of the different types of campgrounds follows:

Tents and RVs

Campgrounds designated for tents and recreational vehicles are suitable both for tenters and for those who come with trailers, tent-trailers, camper vans or motor homes. Most of the campgrounds do not have trailer hook-ups, although many have sewage disposal stations.

Tents

These campgrounds can accommodate the tent camper only. Usually each campsite provides a level tent pad, a picnic table, fireplace or fire grill and a parking place for a car, and is within easy walking distance (usually not more than two or three campsites) from a water source. Some have toilet buildings with shower facilities and many have kitchen shelters.

Primitive

Primitive campgrounds normally provide pit privies, drinking water, fireplaces and firewood, although many also have communal kitchen shelters which are equipped with wood stoves and picnic tables.

Group Tenting

The areas designated as group tenting are meant for organized groups and must be reserved in advance through the park superintendent. Only tents can be used in these areas which usually provide a kitchen shelter, dry or flush toilets, a communal fireplace and firewood.

Winter

Campgrounds open for winter use usually provide the camper with such facilities as dry privies and fireplaces; in some, firewood is provided. A few campgrounds are equipped with heated toilets and enclosed kitchen shelters. Some can accommodate recreational vehicles.

Camping fees (daily rates)

- An unserviced campsite is \$3
- A campsite with central utility services is \$5
- A campsite with electricity is \$7
- A campsite with electricity, sewer and water is \$8
- The fee for use of a group tenting area is 50¢ per person

At Kejimikujik, Prince Edward Island and Terra Nova national parks, some standard campsite fees are \$5.50 which includes a single charge of 50¢ per day for use of hot showers.

Park and campground	Type	Location	Opening date	Closing date	Total sites (p. persons)	Hook-ups: electricity, water and sewage	Water	Flush toilets	Pit toilets	Showers	Laundry facilities	Sewage disposal	Barbecue pits	Fireplaces	Firewood	Handicapped facilities: 27" doors	toilets	showers
1 Pacific Rim																		
Green Point	Tents/RVs	12 km north of Ucluelet Road and Hwy. 4 on Hwy. 4	Year-round		92		•	•				•		•	•		•	•
Schooner	Primitive	North end of Long Beach	Year-round		100		•		•									
2 Mount Revelstoke																		
No campgrounds																		
3 Glacier																		
Mountain Creek	Tents/RVs	20 km east of Rogers Pass	Mid-June	Mid-Sept.	306		•	•				•		•	•			
Loop Creek	Tents/RVs	4 km west of Rogers Pass	July 1	Mid-Sept.	20		•	•						•	•			
Illecillewaet	Tents/RVs	2 km west of Rogers Pass	July 1	Mid-Sept.	59		•	•						•	•			
Illecillewaet	Winter	2 km west of Rogers Pass	Sept. 16	June 30	12				•						•			
4 Yoho																		
Kicking Horse	Tents/RVs	5 km east of Field on Yoho Valley Road	May	Oct.	92		•	•		•		•		•	•		•	•
Chancellor Peak	Tents/RVs	28 km west of Field	May	Oct.	64		•		•					•	•			
Hoodoo Creek	Tents/RVs	23 km west of Field	Late June	Labour Day	106		•	•				•		•	•			
Takakkaw Falls	Tents	Yoho Valley, 14 km on Yoho Valley Road	June	Sept.	35		•		•					•	•			
Ottertail Camp	Group tenting/RVs	8 km west of Field off Trans-Canada Hwy.	May	Oct.	50p		•		•				•		•			
Lake O'Hara	Tents	14 km east of Field by road and 13 km more on foot or by private bus	Late June	Sept.	32		•		•					•	•			
Finn Creek	Winter	16 km west of Field	Nov.	April	10-15		•		•				•	•	•			
5 Kootenay																		
Marble Canyon	Tents/RVs	86 km north of Radium Hot Springs	Mid-June	Labour Day	61		•	•				•		•	•		•	•
Redstreak	Tents/RVs	1.6 km from Radium Hot Springs	Mid-May	Early Sept.	241	38	50	•	•	•		•		•	•		•	•
Crook's Meadow	Group tenting	34 km from Radium Hot Springs	May 1	Oct.	100p			•	•					•	•			
McLeod Meadows	Tents/RVs	26 km north of Radium Hot Springs	Late June	Labour Day	100		•	•				•		•	•		•	•
Dolly Varden picnic area	Winter	36 km north of Radium Hot Springs	Early Sept.	Mid-May	10		•		•					•	•		•	•
6 Waterton Lakes																		
Townsite	Tents/RVs	Townsite	Mid-May	End Sept.	240		95	•	•	•		•					•	•
Crandell Mountain	Tents/RVs	Kilometre 8 on Red Rock Parkway	Mid-May	Sept. 30	129			•	•			•		•	•			
Belly River	Group tenting	South end of Belly River Campground	Mid-May	Sept. 30	200p			•		•				•	•			
Belly River	Tents/RVs	1 km off Chief Mountain Parkway	May 15	Sept. 30	24			•	•					•	•			
Snowshoe	Primitive	8 km from Red Rock Canyon	Year-round		12p			•	•					•	•			
Alderson Lake	Primitive	8 km hike from townsite	Year-round		12p			•	•					•	•			
Bertha Lake	Primitive	6 km hike from townsite	Year-round		12p			•	•					•	•			
Bertha Bay	Primitive	West shore of Upper Waterton Lake	Year-round		12p			•	•					•	•			
Pass Creek picnic area	Winter	5 km from main entrance	Mid-Oct.					•	•					•	•			
Rowe Basin	Primitive	Kilometre 11 on Akamina Hwy., then 5 km west	Year-round	May 1	15			•	•					•	•			
Boundary Bay	Primitive	West shore of Upper Waterton Lake	Year-round		12p			•	•					•	•			

Park and campground	Type	Location	Opening date	Closing date	Total sites (p.: persons)	Hook-ups: electricity	electricity, water and sewage	Water	Flush toilets	Pit toilets	Showers	Laundry facilities	Sewage disposal	Barbecue pits	Fireplaces	Firewood	Handicapped facilities: 27" doors	toilets	showers
Crandell Lake	Primitive	2 km from Crandell Mountain campground	Year-round		12p			•	•						•	•			
Crypt Lake	Primitive	8 km from east shore of Upper Waterton Lake	Year-round		12p			•	•						•	•			
Twin Lake	Primitive	11 km from Red Rock Canyon	Year-round		12p			•	•						•	•			
Wishbone	Primitive	East shore Middle Waterton Lake	Year-round		15			•							•	•			
Goat Lake	Primitive	7 km southwest of Red Rock Canyon	Year-round		12p			•	•						•	•			
Lone Lake	Primitive	3 km south of South Kootenay Pass	Year-round		12p			•	•						•	•			
Crypt Landing	Primitive	East shore of Upper Waterton Lake	Year-round		12p			•	•						•	•			
North Fork of Belly River	Primitive	6 km hike from Chief Mountain Parkway	Year-round		9p			•							•	•			
Lineham Lakes	Primitive	Hikers must register	Year-round		12p			•							No open fires				
7 Banff																			
Cirrus Mountain	Tents/RVs	Kilometre 105 Icefields Parkway*	Late June	Late Aug.	16			•	•						•	•	•	•	
Lake Louise	Tents/RVs	Off Hwy. 1A near junction of Louise Creek and Bow River	Early June	Labour Day	220			•	•			•			•	•			
Lake Louise	large RVs		Early June	Labour Day	180			•	•										
Lake Louise	Winter		Nov.	April	100					•									
Castle Mountain	Tents/RVs	Hwy. 1A, 1 km east of Castle Junction	Early June	Labour Day	44			•	•						•	•			
Castle Mountain	Group tenting	2 km north of Castle Junction	Mid-May	Mid-Sept.	300			•	•						•	•	•	•	
Johnston Canyon	Tents/RVs	26 km west of Banff on Hwy. 1A	Mid-May	Mid-Sept.	140			•	•			•			•	•			
Mosquito Creek	Tents/RVs	Kilometre 23 Icefields Parkway*	Mid-June	Labour Day	32			•	•						•	•	•	•	
Mosquito Creek	Winter		Labour Day	Mid-June	20			•	•						•	•	•	•	
Protection Mountain	Tents/RVs	Hwy. 1A, 11 km west of Castle Junction	Mid-June	Labour Day	89			•	•			•			•	•			
Rampart Creek	Tents/RVs	Kilometre 88 Icefields Parkway*	Mid-June	Labour Day	50			•	•						•	•	•	•	
Two Jack Main	Tents/RVs	13 km northeast of Banff	Mid-June	Labour Day	381			•	•			•			•	•			
Two Jack Lakeside	Tents/RVs	1 km south of Two Jack Main campground	Late June	Labour Day	80			•	•						•	•			
Tunnel Mountain	Large RVs with 3-way hook-ups	2.5 km from Banff	Early May	End Sept.	322		322	•	•		•	•							
Tunnel Mountain	Winter	2.5 km from Banff	Oct.	May	200	200		•	•										
Tunnel Mountain Village 1	Tents/RVs	3 km from Banff	Early May	End Sept.	622			•	•			•			•	•			
Waterfowl Lake	Tents/RVs	Kilometre 57 Icefields Parkway*	Mid-June	Mid-Sept.	116			•	•			•			•	•	•	•	

* Distances along the Icefields Parkway for the campgrounds in Banff are calculated from its Junction with the Trans-Canada Highway.

Park and campground	Type	Location	Opening date	Closing date	Total sites (p: persons)	Hook-ups: electricity, water and sewage	Water	Flush toilets	Pit toilets	Showers	Laundry facilities	Sewage disposal	Barbecue pits	Fireplaces	Firewood	Handicapped facilities: 27" doors	toilets	showers
8 Jasper																		
Columbia Icefield	Tents	Kilometre 109 South Icefields Parkway*	Mid-June	Labour Day	22		•	•						•	•			
Honeymoon Lake	Tents/RVs	Kilometre 52 Icefields Parkway*	Mid-June	Labour Day	30		•	•						•	•			
Miette Hot Springs	Tents	Kilometre 43 on Hwy. 16, north to junction, 18 km on Miette Rd.	Mid-May	Labour Day	100p		•	•										
Jonas Creek	Tents/RVs	Kilometre 77 South Icefields Parkway*	Mid-June	Mid-Sept.	25p		•	•						•	•			
Marmot Meadows	Group tenting	4 km south of Jasper	Mid-May	Labour Day	100		•	•					•	•	•			
Mount Kerkeslin	Tents	Kilometre 36 South Icefields Parkway*	Mid-May	Labour Day	20		•	•						•	•			
Ranger Creek	Group tenting	47 km south of Jasper	Mid-May	Labour Day	25p		•	•					•	•	•			
Snaring River	Tents/RVs	Kilometre 11 on Hwy. 16 North	Mid-May	Labour Day	60		•	•						•	•			
Wabasso	Tents/RVs	Kilometre 16 on Hwy. 93A South	Mid-May	Labour Day	238		•	•						•	•			
Wapiti	Tents/RVs	Kilometre 3 South Icefields Parkway*	Mid-May	Labour Day	345	28	•	•						•	•			
Wapiti	Winter	Kilometre 3 South Icefields Parkway*	Labour Day	Mid-May	100	28	•	•						•	•			
Whirlpool	Group tenting	24 km south of Jasper on Hwy. 93A	Mid-May	Labour Day	25p		•	•						•	•			
Whistlers	Tents/RVs	Kilometre 3 South Icefields Parkway*	Mid-May	Labour Day	756	77	•	•			•			•	•			
Wilcox Creek	Tents/RVs	Kilometre 111 South Icefields Parkway*	Mid-June	Labour Day	46		•	•			•			•	•			
9 Elk Island																		
Sandy Beach	Tents/RVs	Near Astotin Lake at park facilities	Mid-May	Labour Day	123		•	•			•			•	•		•	•
Oster Lake	Group tenting	13 km from park headquarters on east side of Oster Lake	Year-round		100p		•	•					•	•	•			
10 Kluane																		
Kathleen Lake	Tents/RVs	27 km south of Haines Junction, off Haines Rd.	Early June	Sept.	41		•	•						•	•		•	•
Kathleen Lake day-use area	Winter	Near campground	Sept.	June	22			•						•				
11 Nahanni																		
No campsites																		
12 Wood Buffalo																		
Pine Lake	Tents/RVs	Pine Lake, 61 km south of Fort Smith	Mid-May	Mid-Oct.	36		•	•			•			•	•			
Kettle Point	Group tenting	South end of Pine Lake	Mid-May	Mid-Oct.	50p			•						•	•			
13 Prince Albert																		
The Narrows	Tents/RVs	21 km northwest of Waskesiu	Mid-May	Mid-Sept.	60		•	•			•	•		•			•	•
Beaver Glen	Tents/RVs	Waskesiu	Mid-May	Oct. 1	213		•	•		•	•			•	•			
Waskesiu Trailer Park	RVs	Waskesiu	Mid-May	Oct. 1	153	153	•	•		•								
Namekus Lake	Tents/RVs	11 km south of Waskesiu	Year-round		21		•	•						•	•			
Halkett (Sandy) Lake	Tents/RVs	35 km south of Waskesiu	Year-round		26		•	•						•	•			
Trappers Lake	Group tenting	22 km south of Waskesiu	Year-round		8		•	•						•				
Trappers Lake	Primitive	10 km south of Namekus Lake	Year-round		5		•							•	•			

* Distances along the Icefields Parkway for the campgrounds in Jasper are calculated from Jasper townsite.

Park and campground	Type	Location	Opening date	Closing date	Total sites (p: persons)	Hook-ups: electricity, water and sewage	Water	Flush toilets	Pit toilets	Showers	Laundry facilities	Sewage disposal	Barbecue pits	Fireplaces	Firewood	Handicapped facilities: 27" doors	toilets	showers
Kingsmere Lake Areas:																		
South End	Primitive	Kingsmere Lake	Year-round		8		•	•						•	•			
Bladebone Bay	Primitive	Kingsmere Lake	Year-round		3		•	•						•	•			
Ajawaan Portage	Primitive	Kingsmere Lake	Year-round		5		•	•						•	•			
Sandy Beach	Primitive	Kingsmere Lake	Year-round		8		•	•						•	•			
Pease Point	Primitive	Kingsmere Lake	Year-round		10		•	•						•	•			
Bagwa	Primitive	Kingsmere Lake	Year-round		2		•	•					•					
Lily	Primitive	Kingsmere Lake	Year-round		3		•	•					•					
Crean Lakes Areas:																		
Chipewyan Portage	Primitive	Crean Lake	Year-round		3		•	•						•	•			
Moose Bay	Primitive	Crean Lake	Year-round		3		•	•						•	•			
Big Island	Primitive	Crean Lake	Year-round		3		•	•						•	•			
Crean Kitchen	Primitive	Crean Lake	Year-round		3		•	•						•	•			
14 Riding Mountain																		
Wasagaming	Tents/RVs	Wasagaming	Mid-May	End Sept.	537	72 86	•	•		•	•	•	•		•		•	•
Wasagaming	Winter	Wasagaming	Oct.	Mid-May					•									
Lake Katherine	Tents/RVs	Off Hwy. 19 and 2 km east of Hwy. 10	End June	Labour Day	118		•	•				•	•		•			
Moon Lake	Tents/RVs	32 km north of Wasagaming on Hwy. 10	Mid-May	Mid-Oct.	29		•	•					•		•			
Lake Audy	Tents/RVs	32 km west of Wasagaming via Hwy. 10 and Lake Audy Rd.	Mid-May	Mid-Oct.	50		•	•					•		•			
Whirlpool Lake	Primitive	Off Hwy. 19, 11 km east of Hwy. 10	Year-round		15		•	•					•		•			
Camp Manito	Group dormitories	14 km north of Wasagaming	Late May	Mid-Sept.	165p		•	•									•	•
Camp Kippechewin	Group tenting	West Shore of Clear Lake	Mid-May	Mid-Oct.	15p		•	•					•		•			
Ma-ma-o-pe	Group tenting	14 km north of Wasagaming	Year-round		60p		•	•						•	•			
Deep Lake	Tents/RVs	Near Rossburn	Mid-May	Mid-Sept.	8		•	•						•	•			
15 Pukaskwa																		
No campgrounds																		
16 Georgian Bay Islands																		
Flowerpot Island	Primitive	Flowerpot Island	May	Oct.	6				•					•	•			
Beausoleil Point	Group Tenting	Beausoleil Island	Year-round		15				•					•	•			
Cedar Spring	Tents	Beausoleil Island	Year-round		87		•	•	•	•	•			•	•			
Bone Island	Primitive	Bone Island	Year-round		4				•					•	•			
Thumb Point	Primitive	Beausoleil Island	Year-round		10				•					•	•			
The Oaks	Primitive	Beausoleil Island	Year-round		10				•					•	•			
Sandpiper Bay	Primitive	Beausoleil Island	Year-round		9				•					•	•			
Tonch Point	Primitive	Beausoleil Island	Year-round		25				•					•	•			
Chimney Bay	Primitive	Beausoleil Island	Year-round		6				•					•	•			
Little Dog	Primitive	Beausoleil Island	Year-round		4				•					•	•			
Minnehaha Point	Primitive	Beausoleil Island	Year-round		5				•					•	•			
Godettes Grove	Primitive	Beausoleil Island	Year-round		8				•					•	•			

Park and campground	Type	Location	Opening date	Closing date	Total sites (p. persons)	Hook-ups: electricity, water and sewage	Water	Flush toilets	Pit toilets	Showers	Laundry facilities	Sewage disposal	Barbecue pits	Fireplaces	Firewood	Handicapped facilities: 27" doors	toilets	showers
Cherry Point	Primitive	Beausoleil Island	Year-round		7				•					•	•			
Honeymoon Bay	Primitive	Beausoleil Island	Year-round		15				•					•	•			
Island No. 92	Primitive	Island No. 92	May	Oct.	10				•					•	•			
Island No. 95B	Primitive	Island No. 95B	May	Oct.	8				•					•	•			
17 Point Pelee																		
Little Raccoon	Group tenting	6 km from gateway	Year-round		60p		•	•	•				•		•		•	•
Marsh Hawk	Group tenting	6 km from gateway	Year-round		60p		•	•	•				•		•		•	•
18 St. Lawrence Islands																		
Mallorytown Landing	Tents/RVs	Mallorytown Landing, 3 km south-east of Mallorytown	Mid-May	Mid-Oct.	60		•	•					•	•	•		•	•
Grenadier Island	Tents	Grenadier Island, 6 km from Mallorytown by boat	Mid-May	Mid-Oct.	20		•	•	•				•	•	•			
19 La Mauricie																		
La Clairière	Group tenting	Wapizagonke Lake South area	Mid-May	Mid-Oct.	100p		•		•					•	•		•	•
Rivière à la Pêche	Tents/RVs	5 km from St-Jean des Piles entrance	May 29	Sept. 1	124		•	•	•		•			•	•			
Rivière à la Pêche	Winter	5 km from St-Jean des Piles entrance	Sept. 1	May 29	41		•	•		•				•	•			
Mistagance	Tents/RVs	Wapizagonke Lake South	Mid-May	Mid-Oct.	91		•	•		•		•		•	•			
Canoe-camping	Primitive	Various sites on canoe routes	Mid-May	Mid-Oct.	500p		•		•					•	•			
Wapizagonke	Tents/RVs	Wapizagonke Lake North area	Late June	Labour Day	218		•	•	•	•		•		•	•			
20 Auyuittuq																		
Overlord	Primitive	Head of Pangnirtung Fjord	Mid-May	Mid-Sept.	9		•		•					•	•			
Windy Lake	Primitive	18 km from head of Pangnirtung Fjord	Mid-May	Mid-Sept.	10		•		•									
Thor	Primitive	24 km from head of Pangnirtung Fjord	Mid-May	Mid-Sept.	12		•		•									
Summit	Primitive	32 km from head of Pangnirtung Fjord	Mid-May	Mid-Sept.	10		•		•									
21 Forillon																		
Cap Bon-Ami	Tents	10 km southeast of Cap-des-Rosiers	Mid-June	Sept.	32		•	•		•		•		•	•			
Petit Gaspé	Tents/RVs	30 km east of Gaspé	Mid-June	Sept.	136		•	•		•		•		•	•		•	•
Petit Gaspé	Winter	30 km east of Gaspé	Sept.	Mid-June	27				•			•			•			
Le Havre	Tents/RVs	10 km southeast of Cap-des-Rosiers	Mid-June	Sept.	155		•	•		•		•		•	•			
22 Kouchibouguac																		
South Kouchibouguac	Tents/RVs	19 km east of park entrance	May	Mid-Oct.	144		•	•				•		•	•		•	•
Fontaine	Group tenting	14 km northeast of park entrance	May	Oct.	150p		•		•	•				•	•			
23 Fundy																		
Wolfe Lake	Primitive	Northwest entrance to park off Hwy. 114	Mid-May	Oct.	60		•		•						•		•	•
Chignecto North	Tents/RVs	Hwy. 114, 16 km east of west gate	July	Sept.	300	56	•	•				•		•			•	•
Headquarters Trailer Court RVs		Park headquarters	Mid-May	Oct.	29	29	•	•		•		•		•			•	•

Park and campground	Type	Location	Opening date	Closing date	Total sites (p: persons)	Hook-ups: electricity, electricity, water and sewage	Water	Flush toilets	Pit toilets	Showers	Laundry facilities	Sewage disposal	Barbecue pits	Fireplaces	Firewood	Handicapped facilities: 27" doors	toilets	showers
Headquarters Tenting Area	Tents/RVs	Park headquarters	Year-round		123		•	•		•		•			•	•	•	
Mic Mac	Group tenting	4 km from park headquarters on Point Wolfe Rd.	Year-round		100		•		•						•	•	•	
Point Wolfe	Tents/RVs	9 km west of park headquarters on Point Wolfe Rd.	Mid-June	Sept.	212		•	•		•	•				•			
24 Prince Edward Island																		
Stanhope	Tents/RVs	6 km east of Brackley Beach on Gulf Shore Parkway	Mid-May	Mid-Oct.	118	14	•	•		•	•				•	•	•	
Rustico Island	Tents/RVs	3 km west of Brackley Beach on Gulf Shore Parkway	Late June	Labour Day	146		•	•							•	•	•	
Cavendish	Tents/RVs	2 km west of Cavendish Beach on Gulf Shore Parkway	Mid-May	Sept.	304	78	•	•		•	•				•	•	•	
Brackley	Group tenting	1 km east of Brackley on Gulf Shore Parkway	Mid-May	Mid-Oct.	100p		•	•					•	•	•			
25 Kejimikujik																		
Jeremys Bay	Tents/RVs	Jeremys Bay, north end of Kejimikujik Lake	Mid-May	Mid-Oct.	329		•	•	•	•		•		•	•	•	•	
Jim Charles Point	Group tenting	On north shore of Kejimikujik Lake	Year-round		100p		•		•					•	•			
Jakes Landing	Winter	Opposite Jakes Landing near eastern shore of Kejimikujik Lake	Mid-Oct.	Mid-May	15		•	•				•		•	•			
26 Cape Breton Highlands																		
Ingonish	Tents	2 km north of Ingonish Beach	June 30	Labour Day	90		•	•		•				•	•	•	•	
Broad Cove	Tents/RVs	2 km northeast of Ingonish	Mid-May	Mid-Oct.	280	83	•	•		•	•				•	•	•	
Black Brook	Tents/RVs	13 km north of Ingonish	June 30	Labour Day	187		•	•				•			•	•	•	
Big Intervale	Tents	11 km west of Cape North	Mid-May	Mid-Oct.	10		•		•						•	•		
Corney Brook	Tents	10 km north of Chéticamp	Mid-May	Mid-Oct.	20		•	•							•	•		
Chéticamp	Tents/RVs	3 km north of Chéticamp	Mid-May	Mid-Oct.	244	24	•	•		•	•				•	•	•	•
Macintosh Brook	Tents	3 km east of Pleasant Bay	Year-round		20		•	•	•						•	•		
Marrach	Group tenting	Mary Ann Falls Rd. 2 km north of Ingonish	Year-round		60		•		•						•	•		
Clyburn Brook	Winter	3 km north of Ingonish Beach entrance	Mid-Oct.	Mid-May	10		•		•						•			
27 Gros Morne																		
Green Point	Tents/RVs (temporary)	11 km north of Rocky Harbour	Mid-June	Mid-Oct.	18		•		•						•	•		
Berry Hill	Tents/RVs	Rocky Harbour	Mid-May	Mid-Oct.	156		•	•		•	•				•	•	•	•
Lomond	Tents/RVs (temporary)	19 km west of Wiltendale	Mid-June	Mid-Oct.	31		•		•						•	•		

Park and campground	Type	Location	Opening date	Closing date	Total sites (p: persons)	Hook-ups: electricity, water and sewage	Water	Flush toilets	Pit toilets	Showers	Laundry facilities	Sewage disposal	Barbecue pits	Fireplaces	Firewood	Handicapped facilities: 27" doors	toilets	showers
28 Terra Nova																		
Newman Sound	Tents/RVs	Newman Sound near park headquarters	Year-round		400		•	•		•	•	•			•		•	•
South Broad Cove	Primitive	13 km hike from park headquarters	Year-round		6		•		•					•				
Alexander Bay	Tents/RVs	3 km from north gate	Year-round		165		•	•				•		•	•			
South West Arm	Group tenting	8 km from headquarters	Mid-May	Sept.	35		•	•						•	•			
Dunphy's Pond	Primitive	7 km from Sandy Pond by canoe	Mid-May	Sept.	8		•		•					•				
Overs Island	Primitive	Newman Sound, 20 km from headquarters by boat	Mid-May	Sept.	8				•					•				
Minchen Cove	Primitive	11 km hike from park headquarters	Mid-May	Sept.	8		•	•						•				

Park Fees

Motor vehicle entrance fees are collected at most national parks.

Senior Citizen Exemption

Canadian citizens 65 and over can obtain a free annual permit by showing their driver's licence and vehicle registration at any park entrance where fees are collected.

Private Passenger Vehicles

- A daily permit costs \$1; (Point Pelee \$2)
- A four-day permit costs \$2; (not available in Point Pelee)
- An annual permit costs \$10 and is valid in any of the national parks during the fiscal year in which it is issued.

These permits allow entry to any of the national parks while valid, but do not cover camping fees or charges for other services.

Buses

The fee for a charter or tour bus is \$10. The fee for a bus operated by, or for, a school or non-profit organization is \$2.

There is no fee for persons entering a national park on foot, on a bicycle, in a boat or on horseback.

Park fees are subject to change.

Bears

In the land of the great bear, man does not have the right of way.

When you travel from the city to the wilderness, you enter a different world with different rules.

The great bears own this land and will defend it. But if you learn the rules and abide by them, bears will share the wilderness with you.

You must be very careful not to attract bears by feeding them or leaving garbage where they can get at it. Illegal feeding of animals and careless garbage disposal create nuisance animals which often must be destroyed to ensure the safety of park visitors. Garbage should be placed in approved containers only.

When entering a national park, talk to the park warden and his staff before going into back country. They will give you sound advice and full help in making your visit a safe and rewarding one.





Park User Guidelines

The national parks are open year-round. Most visitor services and facilities operate on a reduced scale from October to May.

Pets

Pets must be kept on a leash at all times in the park.

Fishing

You'll need a fishing permit to fish in park waters. The permit is valid in any national park. Permits can be bought at the information centre, administration office, campground or warden's office in the park. A provincial or territorial fishing permit is required for fishing in waters outside most national park boundaries.

- Fishing permit is \$4

No Hunting

Hunting is not permitted in the national parks. If you do bring a gun into a park you must have it sealed.

Topographic Maps

If you plan on hiking or backpacking off the beaten trail through the wilderness areas of one of the national parks, you may find a compass and a topographic map to be your best companions. Topographic maps show such important details as secondary roads, hills, valleys, creeks and rivers. For a free general index listing all topographic maps for the national parks, write to:

Canada Map Office
615 Booth Street
Ottawa, Ontario
K1A 0E9

Arrive Prepared

Visitors to Canada's national parks should arrive equipped to fully enjoy the natural landscapes and recreational opportunities. The following list includes some of the items you may wish to bring.

Generally take what is reasonable to pack and transport, in order to avoid disappointment if you cannot purchase or rent extra requirements locally.

Year-round

- Camping equipment
- Hotel/motel reservations
- any specialized medication you require
- first-aid kit
- matches/waterproof container
- flashlight/lantern
- back pack
- binoculars
- camera equipment/film

- appropriate footwear for your intended recreational activity (wet suit boots for diving; hiking boots; comfortable walking shoes; rubber boots; snowboots)

Summer/Spring/Autumn

- insect repellent
- sunglasses
- rainwear
- warm clothing for cool evenings and surprise storms
- hiking: topographic map, compass
- fishing equipment

Winter

- layered clothing is the key to dressing appropriately for all temperatures. Start with warm underwear. Don't neglect head, ears, face, hands, or feet
- skiing: goggles, protective skin lotion
- snowmobiling: spare parts/tools; helmet

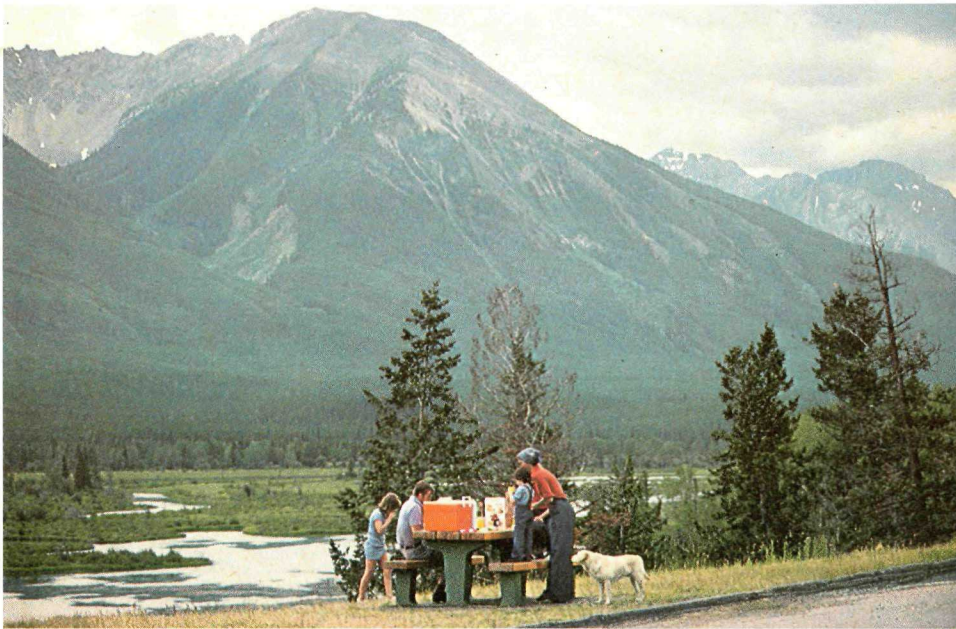
For more information about Canada's national parks contact:

Parks Canada
Western Region
Room 520
220 Fourth Ave. S.E.
Calgary, Alberta
T2P 3H8
Phone (403) 231-4745

Parks Canada
Prairie Region
114 Garry Street
Winnipeg, Manitoba
R3C 1G1
Phone (204) 985-2110

Parks Canada
Quebec Region
1141 Route de l'Eglise
Ste-Foy, Quebec
G1V 4H5
Phone (418) 694-4177

Parks Canada
Atlantic Region
Historic Properties
Upper Water Street
Halifax, Nova Scotia
B3J 1S9
Phone (902) 426-3457



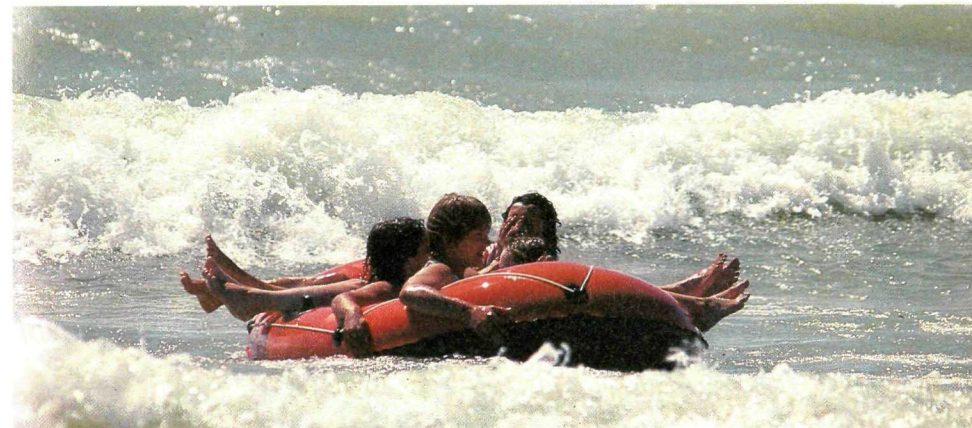
Lunch near Sheep Mountain, Banff National Park

Parks Canada
Ontario Region
132 Second Street East
Cornwall, Ontario
K6H 5V4
Phone (613) 933-7951

or:
Parks Canada
Ottawa, Ontario
K1A 1G2
Phone (819) 997-0088



Kootenay National Park



Point Pelee is popular with swimmers





Follow the Beaver to national parks and historic sites

These highway signs now in Quebec, Ontario and Alberta mark the routes leading to national parks, national historic sites and heritage canals.

Beaver signs will soon be appearing on highways in other provinces and the territories.