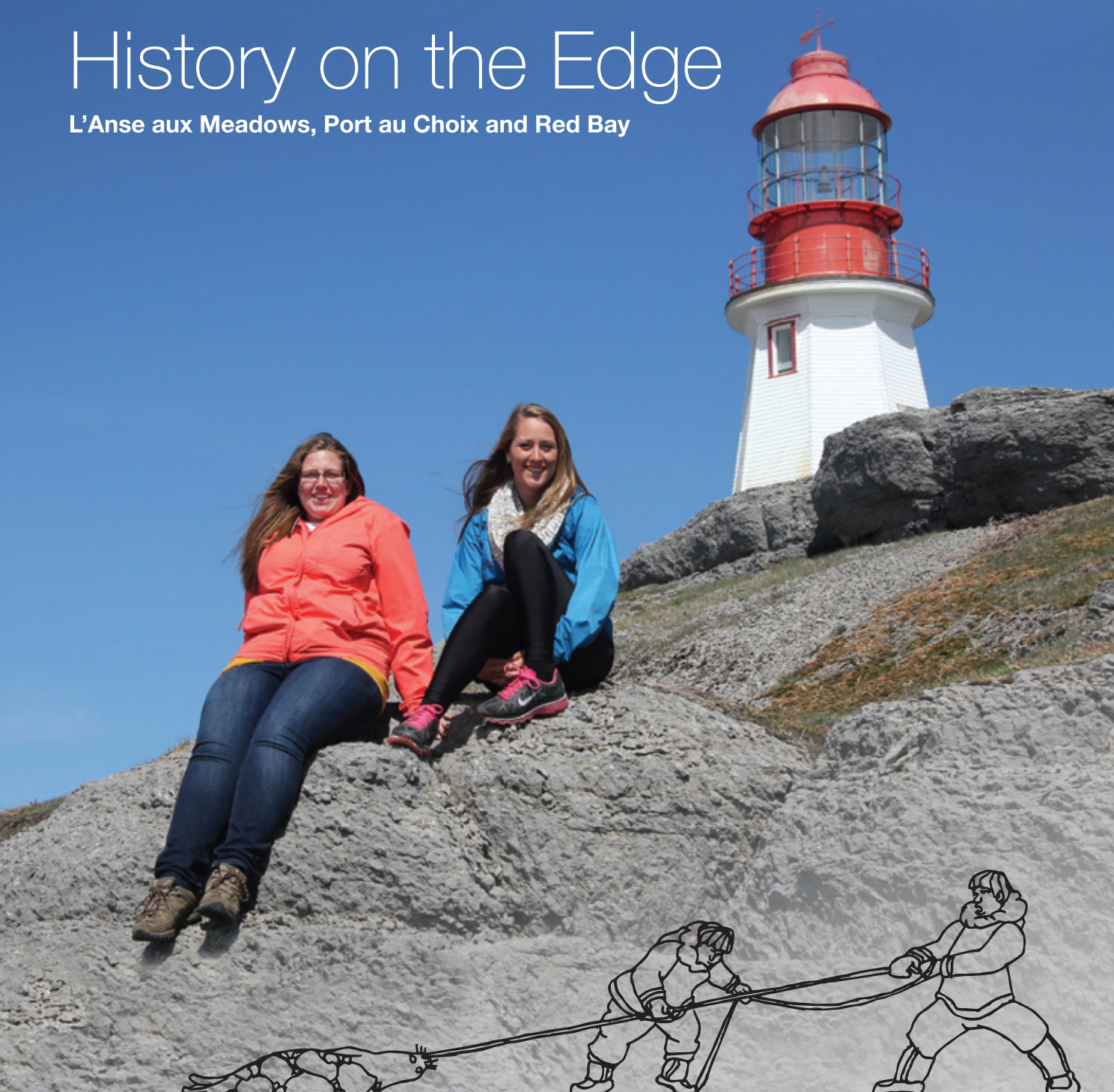




Western Newfoundland  
and Labrador  
National Historic Sites

# History on the Edge

L'Anse aux Meadows, Port au Choix and Red Bay



Parks  
Canada

Parcs  
Canada

Canada





# Port au Choix



Camellia Ibrahim

## A Special Place to call Home

Attracted by the rich resources of the sea, people have lived at Port au Choix for more than 6,000 years. A large burial ground bears witness to the marine-based technology, economy and spiritual culture of the first people to live here – the Maritime Archaic. The remains of a large settlement at Phillip's Garden paint a vivid picture of the material and intellectual culture of the Groswater and Dorset people, 3,000 years later. Explore this site to discover this special place and the ancient cultures who called it home.



### Services



### Season and Hours of operation

June 4 - Oct 4 / Daily 9 am - 5 pm

### Contact info

(709) 861-3522 / (709) 458-2417 (off season)



Kayaker / Sheldon Stone

Check out our website for up-to-date information on our events and programs happening throughout the season.  
<http://pc.gc.ca/en/lhn-nhs/nl/portauchaix/index>

Imagine 6,000 years  
of human history

Hauling Seals / Sheldon Stone

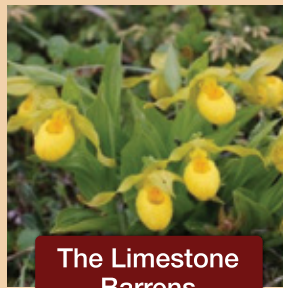
## Not to be missed



**French Rooms  
Cultural Centre**

Learn about the resettlement era, the French migratory fishery and the Point Riche lighthouse. Local shrimp and crafts are available for purchase at the centre gift shop.

(709) 861-2142



**The Limestone  
Barrens**

Follow the contours of the limestone barrens to explore a landscape that is home to some 114 rare plants, including the elegant yellow lady slipper orchid.



**French Bread  
Oven**

Enjoy freshly baked bread topped with local jams from a reconstructed French oven, and have your photo taken with the chaloupe in period costume. For further details and program schedule contact the French Rooms Cultural Centre.

(709) 861-2142



**Torrent River Salmon  
Interpretation Centre**

Learn about the adult salmon restocking story, view Atlantic salmon - eye to eye. The site of the Province's most successful salmon enhancement program.

[www.torrentriver.ca/home](http://www.torrentriver.ca/home)

### Good to know

- + Wild animals such as caribou are often seen on the trails in and around Port au Choix. Please do not approach or entice them, and be sure to give them space to safely pass you on the trail.
- + Explore the Point Riche lighthouse area to find the sweet spot for a perspective selfie.

### Try these

- + Did you know needle ice makes frost boils? Download the free Explora app to your smart phone to discover more as you explore.
- + Join an interpreter for the Seal for All Seasons program to explore the different ways past and present cultures have used seals to sustain their livelihoods.

### Fun Fact

- + The Giscom's Arnica is in the sunflower family and grows at just nine sites around the Gulf of St. Lawrence. Of this small global population, more than 90% is found within Port au Choix NHS!







# L'Anse Aux Meadows

A UNESCO World Heritage Site



United Nations  
Educational, Scientific and  
Cultural Organization

Organisation  
des Nations Unies  
pour l'éducation,  
la science et la culture



**L'Anse aux Meadows  
National Historic Site**  
• inscribed on the World  
Heritage List in 1978

**Lieu historique national  
de L'Anse aux Meadows**  
• inscrit sur la Liste du  
patrimoine mondial en 1978

Archaeological site with reconstructions in the background / Dale Wilson

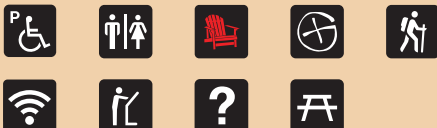


## An epic Viking adventure unearthed

Designated a UNESCO World Heritage Site in 1978, L'Anse aux Meadows provides evidence of one of the great steps in human migration and is the only authentic Viking site in North America. Recalling epic voyages across raging oceans, L'Anse aux Meadows is home to 11th century artifacts that present clear evidence of the earliest known European presence on the American continent. Stand where the Vikings once set sail and relive their stories at this unique Norse outpost on Newfoundland's windswept northernmost tip.



### Services



### Season and Hours of operation

May 28 - June 10 / 9 am - 5 pm  
June 11 - Sept 21 / 9 am - 6 pm  
Sept 22 - Oct 5 / 9 am - 5 pm

### Contact info

(709) 623-2608 / (709) 458-2417 (off season)



Chris Reardon

Check out our website for up-to-date information on our events and programs happening throughout the season.

<http://www.pc.gc.ca/en/lhn-nhs/nl/meadows/index>



# Step into your own saga at the only authenticated Viking settlement in North America!



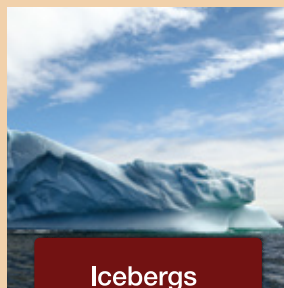
## Not to be missed



**Norstead Viking Village,  
Snorri Boat**

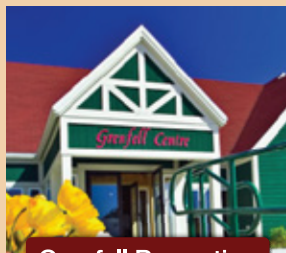
Norstead replicates a Viking era port of trade and has the Snorri, a 54 foot long Viking knarr.  
**Hours of operation:** Early June to Mid-September (9:30 am - 5:30 pm)

[www.norstead.com](http://www.norstead.com)  
(709) 623-2828



**Icebergs**

Icebergs abound in the cold waters off Newfoundland and Labrador from early April to late June. Boat tours offer a chance to view icebergs, whales, and bird life.



**Grenfell Properties  
St. Anthony**

Visit Grenfell Historic Properties and walk in the footsteps of Sir Wilfred Thomason Grenfell, a medical missionary. The gift store features traditional Grenfell and locally crafted products.

[www.grenfell-properties.com](http://www.grenfell-properties.com)  
(709) 454-4010



**Conche Interpretation  
Centre**

Follow further along the French Shore to the Conche Interpretation Centre. Home of the French Shore Tapestry.

[www.frenchshoretapestry.com](http://www.frenchshoretapestry.com)

Tour the interior of the peninsula for beauty off the beaten path.

[www.frenchshore.com](http://www.frenchshore.com)

### Good to know

- + Visit the Viking Encampment living history program to experience how the Vikings lived and worked in this far flung outpost.
- + Sagas and Shadows: Gather around the fire and join the crew for an evening of heroic and tragic tales from the Viking Sagas. Tuesday and Saturday 7:30 pm.  
Call (709) 623-2608 for more information or to book.

### Try these

- + Join the regularly scheduled guided tour, "Meeting of Two Worlds", to discover the international archaeological significance of L'Anse aux Meadows and its powerful place in the history of the human migrations.
- + Visit the blacksmith to learn the art of making your own Viking Age cut nail.

### Did you Know?

- + The Vikings were the first Europeans to trade with Indigenous people in North America.





# Red Bay

A UNESCO World Heritage Site



United Nations  
Educational, Scientific and  
Cultural Organization

Organisation  
des Nations Unies  
pour l'éducation,  
la science et la culture



**Red Bay Basque  
Whaling Station**  
• Inscribed on the World  
Heritage List in 2013

**La Station baleinière  
basque de Red Bay**  
• inscrit sur la Liste du  
patrimoine mondial en 2013

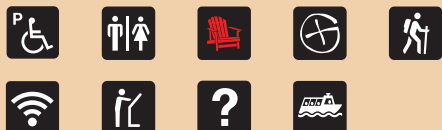
Excavating the San Juan / Parks Canada

## A Mystery of the deep unraveled

Mysterious red 'pebbles' found scattered on Red Bay's rugged coastline were the first clue to a deep historic mystery. Revealed to be terracotta roofing tiles, a historic link to 16th century Basque whalers was made. Designated a UNESCO World Heritage Site in 2013, Red Bay Basque Whaling Station represents one of the best preserved and most extensive examples of a large-scale, pre-industrial, commercial whaling operation found anywhere in the world.



### Services



### Season and Hours of operation

June 4 - Oct 4 / Daily 9 am - 5 pm

### Contact info

(709) 920-2142 / (709) 458-2417 (off season)



Sheldon Stone

Check out our website for up-to-date information on our events and programs happening throughout the season.

<http://www.pc.gc.ca/en/lhn-nhs/nl/redbay/index>

# Basque whalers in Labrador Lighting the Lamps of Europe

Saddle Island / Chris Reardon

## Not to be missed

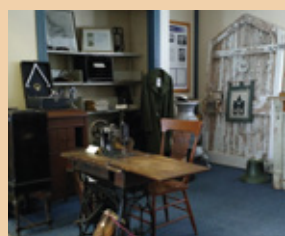


**Red Bay Right Whale Exhibit**

Selma Barkham Community Centre

The exhibit features the 400 year old skeleton of a 52 foot Bowhead whale and focuses on the research and protection of the Bowhead and North Atlantic Right whales.

(709) 920-2197



**Labrador Straits Museum and Craft Shop**

The Museum showcases life 150 years ago with emphasis on the role of women. Features ongoing traditional skills demonstrations, WIFI, and Gift Shops.

Labrador Straits Museum  
L'Anse au Loup (709) 927-5077  
Red Bay (709) 920-2043



**L'Anse Amour National Historic Site of Canada**

Contemplate thousands of years of human history in Labrador at the site of a 7500-year-old ceremonial burial place of a Maritime Archaic youth.

(709) 927-5825



**Pointe Amour Lighthouse**

Climb to the top of the tallest lighthouse in Atlantic Canada and view exhibits about the natural and cultural history of the Labrador Straits.

(709) 927-5825

### Good to know

- + The water taxi to Saddle Island runs daily. Tickets can be purchased at the visitor centre reception.
- + Insect repellent and bug jackets are essential gear to carry while exploring the scenic splendour of Labrador.

### Try these

- + Join an interpreter on Saddle Island for a tour of the archaeological sites and a rare look at 16<sup>th</sup> century whaling life.
- + Explore Red Bay's weird and wonderful artifacts collection to uncover the stories behind some of our one-of-a-kind objects, including both bizarre and beautiful artifacts of Basque life.

### Did you Know?

- + The Basque brought thousands of terra cotta tiles to Red Bay during the 16th century, and these tiles helped researchers find the remains of the whaling station over 400 years later.



# Labrador



## Geocaching

Geocaching is an outdoor activity where you use a GPS or your smart phone to locate hidden caches. You can play at every Parks Canada location in Western Newfoundland and Labrador.

Buy the program card at the visitor centre, use the coordinates to locate caches and punch the card. Return the card to reception to receive a trackable geocoin unique to each site.

