

## While in Medicine Hat Why Not Visit

- Saamis Tepee Interpretive Centre
- Echo Dale Farm and Regional Park
- Downtown Historic Walking Tour
- Medicine Hat Museum and Art Gallery
- Police Point Park and Interpretive Centre
- Riverside Park • City Hall
- St. Joseph's Sculpture Park (Carved Brick Stations of the CROSS)
- Medicine Hat Wax Museum

- YES**, I want to join the FRIENDS OF MEDALTA  
I enclose my \$15.00 fee.
- YES**, I care about preserving the pottery history and  
am enclosing my contribution of:
- \$30.00    \$50.00    \$100.00   \$ \_\_\_\_\_
- Send receipt and please    contact me about a  
commemorative Medalta Brick.
- YES**, I am interested in joining a Medalta Collectors  
Club.  
Name \_\_\_\_\_
- Address \_\_\_\_\_
- Postal Code \_\_\_\_\_ Phone \_\_\_\_\_

Mail this form with your donation (tax deductible) to:  
**FRIENDS OF MEDALTA SOCIETY**  
Box 204, Medicine Hat, AB T1A 7E9

**MEDALTA POTTERIES IS A  
PROVINCIAL AND NATIONAL  
HISTORIC SITE**

MAJOR SPONSOR:

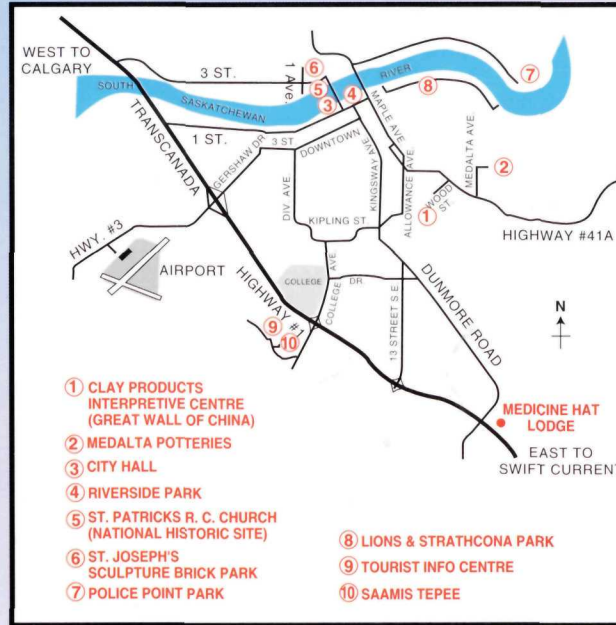


1051 - ROSS GLEN DR. S.E. MEDICINE HAT, AB

403-529-2222

**1-800-661-8095 For Reservations**

**FOLLOW THESE  
SIGNS TO THE  
CLAY PRODUCTS  
INTERPRETIVE  
CENTRE ...**



## Clay Products Interpretive Centre

703 Wood Street S.E., Medicine Hat, AB T1A 7E9

### Hours of Operation

9:00 A.M. - 5:30 P.M. seven days a week

May 15 to October 31

Special hours by arrangement

For More Information, Telephone

**(403) 529-1070 or 527-6422**

The Great Wall of China and the Medalta  
Historic Site are Major Exhibitions Presented  
by FRIENDS of MEDALTA SOCIETY

# Clay Products Interpretive Centre

MEDALTA HISTORIC SITE

Medicine Hat, Alberta



History of the  
Clay Manufacturing Industry  
in  
Medicine Hat  
*Visit* **THE GREAT  
WALL of CHINA**

- The WORLD'S Largest Exhibition of Medalta Pottery, Hycroft China and Sunburst Ceramics
- Daily Guided Tours (9:00 A.M. to 5:30 P.M.)
- Potting Demonstrations
- Kiddies Klay Korner
- Gift Shop
- Potters' Art Gallery

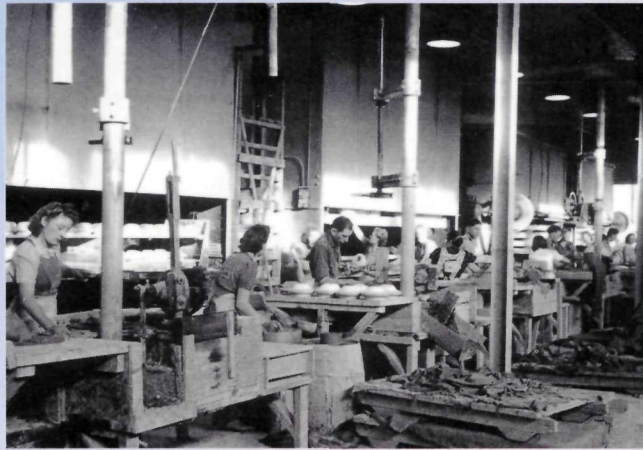
The clay industry in Medicine Hat is as old as the city itself. With an abundant supply of clay deposits, natural gas and the railroad for transportation, manufacture of brick, tile, pottery and latter insulators evolved. Medalta Potteries, Medicine Hat Potteries and Alberta Potteries were all in operation at the same time. Medicine Hat Potteries became Hycroft China Ltd. This is the present site of the Clay Products Interpretive Centre. Medalta Potteries Site is in the process of RESTORATION and now houses a display of pottery, artifacts and production machines. The four down draft kilns may be seen at this site (one is open to view).



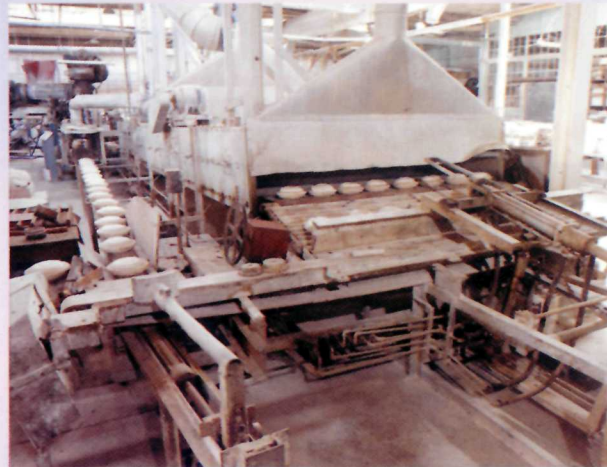
The Society's permanent collection consists of more than 3000 Medalta pieces, some of these are rare and one of a kind.



**Jiggering a crock:** A slab of soft clay is put in a revolving plaster mould. As the mould turns, a template on a moving arm trims off the excess clay and forms the inner surface of the piece.



1943 production line at Medicine Hat Potteries. This building now houses the Clay Products Interpretive Centre.

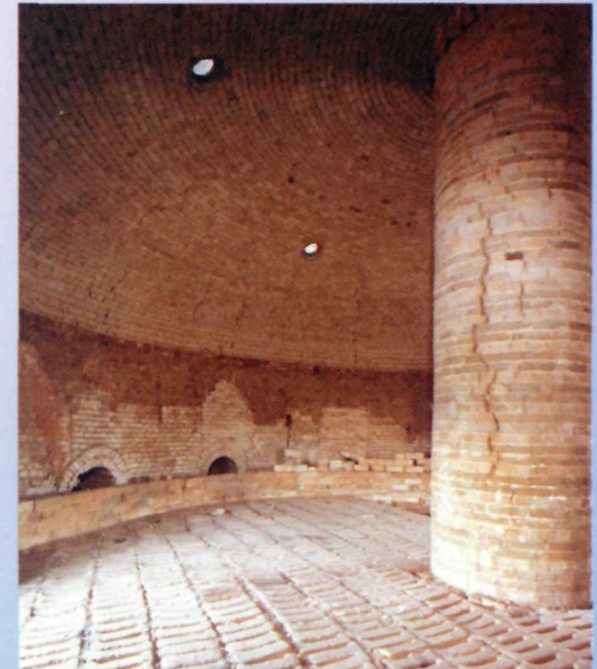


This automated MILLER Machine could produce 9000 pieces of ware per eight hour shift. During the plant's heyday, it operated 24 hours a day. This is one of many specialized pieces of machinery that you will see on your tour of the historic potteries.

Demonstrations of pottery making and guided tours of the two pottery sites are given daily. Medalta and Hycroft replicas as well as original Hycroft china are for sale in the gift shop.



**Slip Casting:** A plaster mould is filled with liquid clay. The plaster absorbs a thin wall of clay onto it's surface and the surplus slip is poured off.



Interior of one of Medalta's four remaining beehive kilns. They were constructed in the early 20's at a cost of \$8400.00 each. Pottery was stacked in the kilns and the entrances bricked shut. The firing was done using natural gas.