

## THE PROPOSED CONCEPT

The proposed development concept for *Grosse Île* NHS is based on the idea that, as far as historical and heritage awareness is concerned, nothing is more valuable than direct contact with authentic evidence of the past. Consequently, the proposed development concept is based on the preservation of the site's present character especially on the conservation of the landscape and heritage resources in place.

### GENERAL DIRECTIONS FOR DEVELOPMENT

#### Commemoration of the theme

The commemoration of the theme is based wherever possible on the resources themselves preserved in their existing state. Furthermore, in order to adequately prepare the visitors to discover the island and help them discern the long evolution of the station since its creation, a situation to «place them in the context» is proposed inside the former *desinfection building* as soon as they arrive.

The immigration theme goes beyond the activities related to the quarantine itself and its relationship to the resources is not so obvious. For this reason, we propose to present this vast theme in the former third-class hotel.

A number of sub-themes related to the history of the quarantine

station are presented in various places on the island and are closely linked to the resources. Visitors can enter several of the old buildings such as *the second-class hotel, the former wash house, the Anglican chapel, the Catholic chapel, and the lazaretto.*

The means of interpretation used harmonize with the conservation techniques of the resources. Therefore, mainly «light» and rather sober means are implemented (exhibit

modules, texts and illustrations, furniture and objects set up inside the buildings...). The communication of the immigration theme

and its context carry critical importance which could, however, justify using more sophisticated media such as state-of-the-art audio-visual and computerized tools.

Although a guided tour service is available, visitors would be free to tour the island on their own, at their own pace. Nevertheless various «menus» and tours would be proposed. A walking route is especially

designed to enable visitors to appreciate the natural landscapes of *Grosse Île* while getting to know the environmental features of an island milieu.

CATHOLIC CHAPEL



#### Treatment of Historic Resources

Restoration work, as far as visible archeological resources, structures and buildings are concerned, is of a discreet nature. These elements are undergoing stabilization and repair work to maintain the features that have been preserved to date and to protect them from further deterioration.

Work on indoor spaces is similar in nature to that planned for the exterior following the same conservation objectives.

In general, the archeological resources found during the digs are reburied. However, certain particularly evocative vestiges may be stabilized and exhibited *in situ* to enable visitors to better visualize the traces of all the periods that have shaped the history of the quarantine station.

On the whole, the main features of the island's present landscape remain untouched.

#### Visitor Services

Visitors will continue to access the island by pri-

vate maritime transport carriers. Aside from the installation of appropriate road signs, the only off-site facilities planned are the set-up of general information modules about *Grosse Île*'s attractions on the various wharves.

On the whole, the services offered on the island, considering the specific requirements the insular features of the site impose, remain intentionally low profile. Essentially, in the visitor reception sector, there would be a group of services : a reception and information area, washroom facilities, a restaurant serving refreshments...

## PUBLIC CONSULTATION

### 1st STEP Information Sessions

Come and meet the representatives of Environment Canada's Parks Service during the information sessions to be held on **March 17, 18 and 24, 1992.**

You will be able to find out more about the proposed development orientations and obtain all the information needed to understand the project.

### 2nd STEP Public Hearings

Individuals and organizations wishing to submit a brief must forward it to the address indicated below before the deadline **April 28, 1992.**

Should you wish to present your brief orally during the public hearings, please register before **April 8** by contacting the public participation coordinator. The public hearings will take place on **April 21, 22 and 28, 1992.**

### CALENDAR

PLACES	INFORMATION SESSIONS	PUBLIC HEARINGS
<b>Saint-Antoine-de-l'Isle-aux-Grues</b> Auberge de l'Oie Blanche	Tuesday March 17, 1992 7:30 - P.M.	Tuesday April 21, 1992 7:30 - P.M.
<b>Montmagny</b> Motel l'Oiselière 105 chemin des Poiriers Salle La Bernache	Wednesday March 18, 1992 7:30 - P.M.	Wednesday April 22, 1992 7:30 - P.M.
<b>Québec</b> Holiday Inn Québec Centre-Ville 395 de la Couronne Salle Saint-Laurent Nord	Tuesday March 24, 1992 7:30 - P.M.	Tuesday April 28, 1992 7:30 - P.M.

### ADDITIONAL INFORMATION

A document describing in detail the proposed development orientations for *Grosse Île* National Historic Site is available on request, in French or in English. You can receive a free copy by writing to the following address :

Public Consultation  
Parks Service  
Environment Canada  
3 Buade Street  
Québec City, Québec  
G1R 4V7

or by calling : 1-800-463-6769

Published by Authority of  
the Minister of the Environment  
© Minister of Supply and Services  
Canada 1992

PHOTOGRAPHS: Environment Canada  
Parks Service

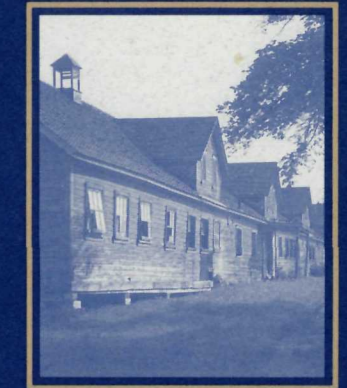
Cat. No R63-189/1992 E  
ISBN 0-662-19368-7



Canada

PUBLIC CONSULTATION

# GROSSE ÎLE



NATIONAL  
HISTORIC  
SITE



## DEVELOPMENT CONCEPT

Environment Canada  
Parks Service

Environnement Canada  
Services des parcs

## A QUARANTINE STATION



**G**rosse Île is anchored in the middle of the St. Lawrence Estuary approximately 50 km down the river from Québec City. This island was designated, in 1832, as an advanced quarantine station to protect Canadians from the epidemics that raged in Europe at the time and which new arrivals to the country could be carrying.

Grosse Île served as the principal Canadian quarantine station until 1937. During this long period, the city of Québec, then considered the «gateway to the country», apparently welcomed some four million immigrants. In 1956 after a short period of occupation by the Ministry of Defence, Grosse Île was transferred to Agriculture Canada which gradually set up an animal quarantine station for imported cattle and opened various laboratories.

In 1984, the Historic Sites and Monuments Board of Canada recognized the national historic importance of Grosse Île and recommended that the Canadian Government designate it a

historic site dedicated to the commemoration of immigration.

Substantial, diversified historical resources still lie hidden on Grosse Île :

- ▶ several dozen structures and buildings remaining from the various periods of the quarantine station's long history
- ▶ archeological remains associated with the different phases of occupation of the site
- ▶ a number of objects found on site which are associated with the functions and activities of the station and the subsequent period of occupation.

With its geographical setting and island character, Grosse Île offers one of the most picturesque natural windows on the wind-swept shores washed by the tides, emanating the smell of sea-wrack.

## THEMES AND OBJECTIVES

**D**efining the themes and objectives of a site constitutes the first step in the planning process and is intended to serve as a basis for research and the development of this national historic site.

### Themes

The themes developed for Grosse Île National Historic Site were inspired by the recommendations of the Historic Sites and Monuments Board of Canada.

General theme :  
CANADA :  
LAND OF WELCOME AND HOPE

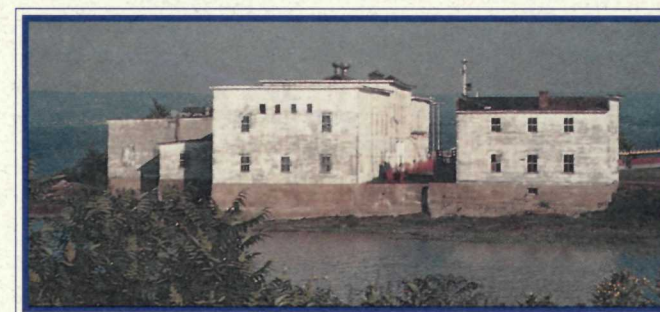
Main theme :  
Immigration to Canada via Québec City (1800 - 1939)

Secondary theme :  
Grosse Île Quarantine Station (1832 - 1937)

- ▶ to protect the island's natural milieu
- ▶ to preserve, in collaboration with Agriculture Canada, the heritage of Grosse Île while taking appropriate steps to ensure the quality of the environment

- ▶ to publicize the existence of Grosse Île National Historic Site and encourage visits to the island

- ▶ to offer visitors a choice of visits likely to increase their understanding of the themes as well as their appreciation of the site's heritage resources



DISINFECTION BUILDING AND LAUNDRY

### Objectives

- ▶ to ensure the preservation of the overall historical resources (architectural, archeological and ethnographic) associated with the identified themes

- ▶ to establish regular, constructive relationships with the main players in the region and to elicit participation of the local partners in providing services to visitors so as to promote harmonious integration of the site into its region.

## DEVELOPMENT PRINCIPLES

**T**here is an outline of the main principles which inspired the proposed development orientations :



FORMER WASH HOUSE

### Respect for the «spirit of the site»

The term *respect for the «spirit of the site»* refers to the preservation of the emotional role of a heritage site. At Grosse Île it is obvious that the site has not changed over time and that the island is a veritable open-air history book. Erasing the traces of such a particular atmosphere as that which envelops the island would be tantamount to cutting off its tongue right when the island was ready to spill out its story.

### Integral presentation of the theme

It is important to present Grosse Île both as a whole, with respect to its role in immigration to Canada, as well as more specifically, its role as a quarantine station. Therefore,

we feel that visitors should be given the chance to learn about the overall historic themes to be commemorated at this site.

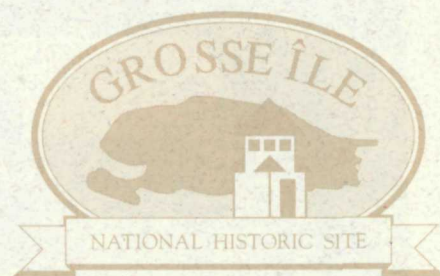
### A Nature-Culture Approach

The humanized landscape of Grosse Île, shaped by a century and a half's occupation, falls within a geographic and natural framework which has changed very little throughout the ages.

On a different level, the insular character of the place emphasizes the heritage interest the site already presents. Given the context, it is understandable that visitors be offered a multipurpose «visit experience» which will enable them to appreciate the overall historical and environmental attractions of the island while benefiting from the educational and recreational potential of the resources.



nce the land of welcome and hope for thousands of immigrants, Grosse Île has recently become a member of the large family of national historic sites of Canada. Thus, Grosse Île is now being called upon to commemorate the considerable role immigration played during the 19th and early 20th centuries in the settling and development of the country.



The aim of this pamphlet is to give you a concise introduction to the objectives the Canadian Parks Service intends to pursue on Grosse Île as well as the proposed orientations for the preservation and development of this heritage site. These objectives and orientations will be explained to you in greater detail during the information sessions to be held in the near future. Public hearings are also planned so that you may express your opinion on the subject.

I therefore invite you to participate in this consultation exercise and to forward your point of view to us. We will welcome your every suggestion and comment with a view to improving this project.

Thank you for your contribution to this consultation process.

**Gilles Desaulniers**  
Director General  
Québec Region  
Canadian Parks Service