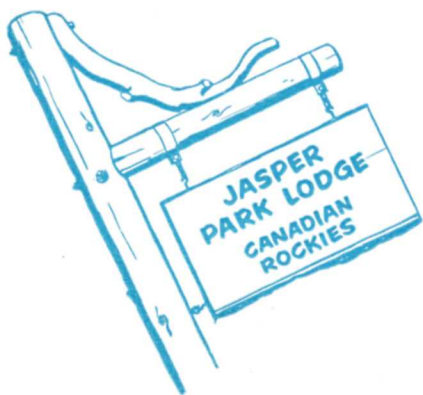


Jasper



**NATIONAL PARK
CANADIAN ROCKIES**





Jasper Park Lodge is much more than a luxury resort;
it is a gracious, carefree way of life among the
beauties of soaring peaks and emerald lakes
for young and old. Here's a corner of the open
air, heated swimming pool.

Invitation to Leisure



This is your invitation to fun.

Accept it and you'll have the best vacation you have ever enjoyed.

By words and pictures we have attempted in this book to tell you about hotel comforts and conveniences, about a famous golf course and an open air swimming pool, about motoring, trail riding and fishing. For the rest—for the exhilaration of the air, for the lift given

to your spirit by the mountain peaks and the alpine meadows, the turbulent rivers and the cool transparent lakes—you'll have to read between the lines.

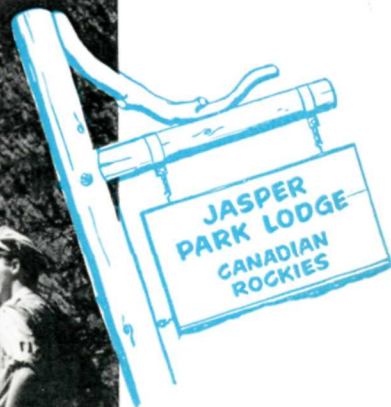
You can't get Jasper out of a book.

You'll really have to go and experience it for yourself.

R.S.V.P. to your Canadian National agent. He'll be glad to help you plan your trip.



The Time and the Place ...



Stutfield Glacier, one of the spectacular sights along the Columbia Ice Field Highway, a daily motor ride from the Lodge that attracts thousands each season.

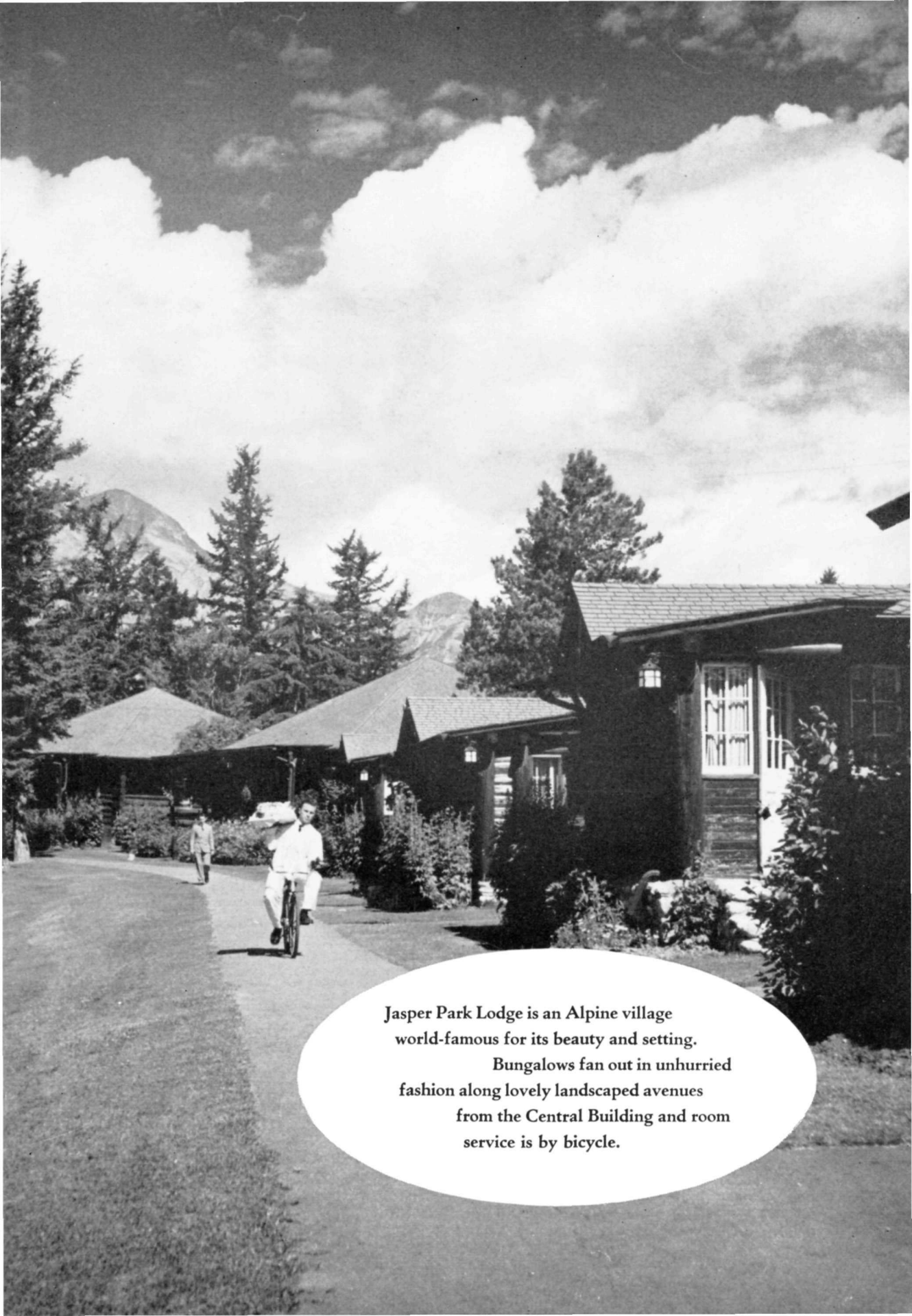
Jasper is at home to you all the year 'round, but the height of the season is between the middle of June and the second week of September. That is when Jasper Park Lodge is open.

At the back of this book we tell you about other hotels, chalets, cabins and camps in the Park.

How you come depends, of course, on where you live. Jasper National Park lies in the northern Canadian Rockies, on the border between the provinces of Alberta and British Columbia. It is on the main

transcontinental line of the Canadian National Railways, directly reached through Vancouver and Prince Rupert on the Pacific Coast, through Edmonton, Saskatoon and Winnipeg in the western provinces, and Toronto, Montreal and other eastern cities.

It is to a fur trader that Jasper owes its name. No one knows much about him except that his name was Jasper Hawes, he had yellow hair and he came from Missouri.



Jasper Park Lodge is an Alpine village
world-famous for its beauty and setting.

Bungalows fan out in unhurried
fashion along lovely landscaped avenues
from the Central Building and room
service is by bicycle.

Top Flight Golf...



Among the guests at the Lodge last summer were a couple of keen golfers from Scotland. Good sturdy Presbyterians, they scrupulously denied themselves a game on the Sabbath, but they couldn't resist that course. They left their clubs behind but, after church in the morning, they set out to walk the fairways and greens from the first hole to the 18th, studying every trap and water hazard and working out Monday's strategy.

That's the way Jasper's famous course affects people. It's a championship course—6,700 yards, par 71—one of the finest on the continent. The hazards in-

clude the beautiful mountain terrain, which makes it hard to keep your eye on the ball, and sometimes a bear unconcernedly ambling over the grass, but they do not include strenuous climbs.

It is laid out on the British principle, with the ninth hole farthest away from the clubhouse, but an additional three holes permit a nine-hole game, taking you back to the clubhouse with no cutting in.

Golf Week, culminating in the Totem Pole Tournament, attracts high calibre players, both men and women, every year.

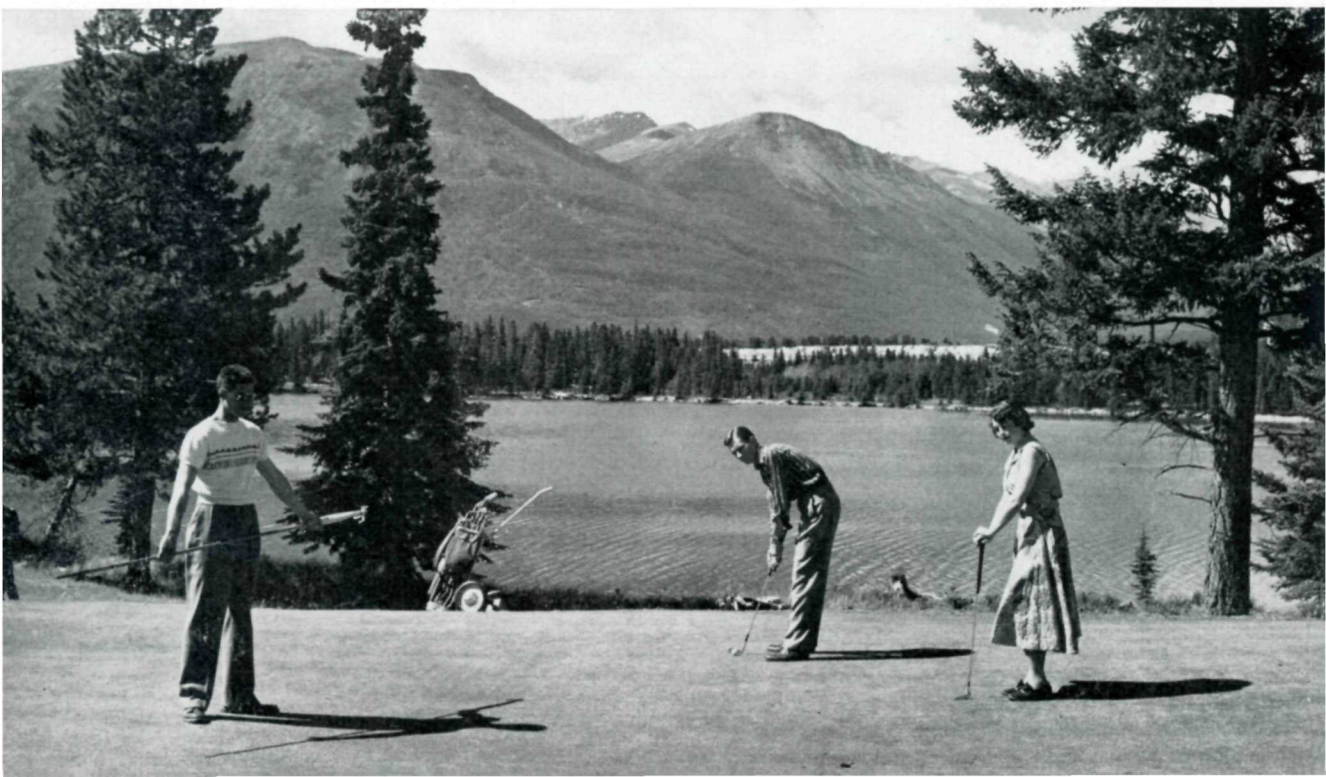
The colorful face of Pyramid Mountain provides a backdrop for the ninth tee of the famous Jasper Park Lodge Golf Course.





Approach shot to the 13th green, longest hole on the Jasper Park Lodge Golf Course. The ball is about 75 yards from the green. ↗

↘ The shot-silk waters of Lac Beauvert parallel the 14th fairway and green.



Journey to a Glacier



Crowned with everlasting snow and ice, Mount Edith Cavell soars above the valley in superb beauty. You see it when you step from the train, you gaze at it across Lac Beauvert from the Lodge, and if you take none of the other splendid motor drives, you shouldn't miss the trip that brings you to the foot of the Glacier of the Angel on this mountain.

Thrilling switchbacks, revealing panoramas more and more wonderful, carry you over 20 miles and up 2,000 feet, to the outspread wings of its Angel Glacier.

Once the peak was the signpost directing the early explorers on their way through the passes of the Rockies to the Pacific Ocean. To you it stands as a symbol of all that is impressive and beautiful in Jasper.

In half an hour by motor from the Lodge you can reach the foot of the Glacier of the Angel on Mount Edith Cavell.





Stately Mount Edith Cavell, as seen across Lac Beauvert at the Lodge, is one of the most frequently photographed scenes in the Canadian Rockies.



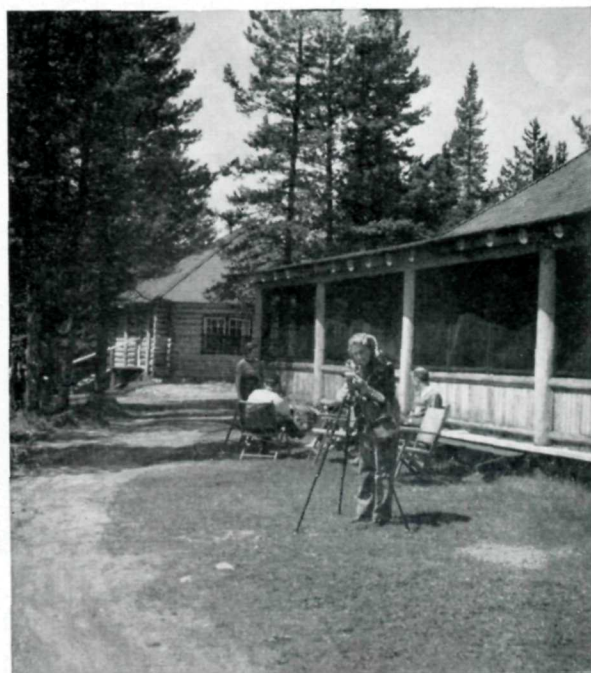
Gem of the Rockies...

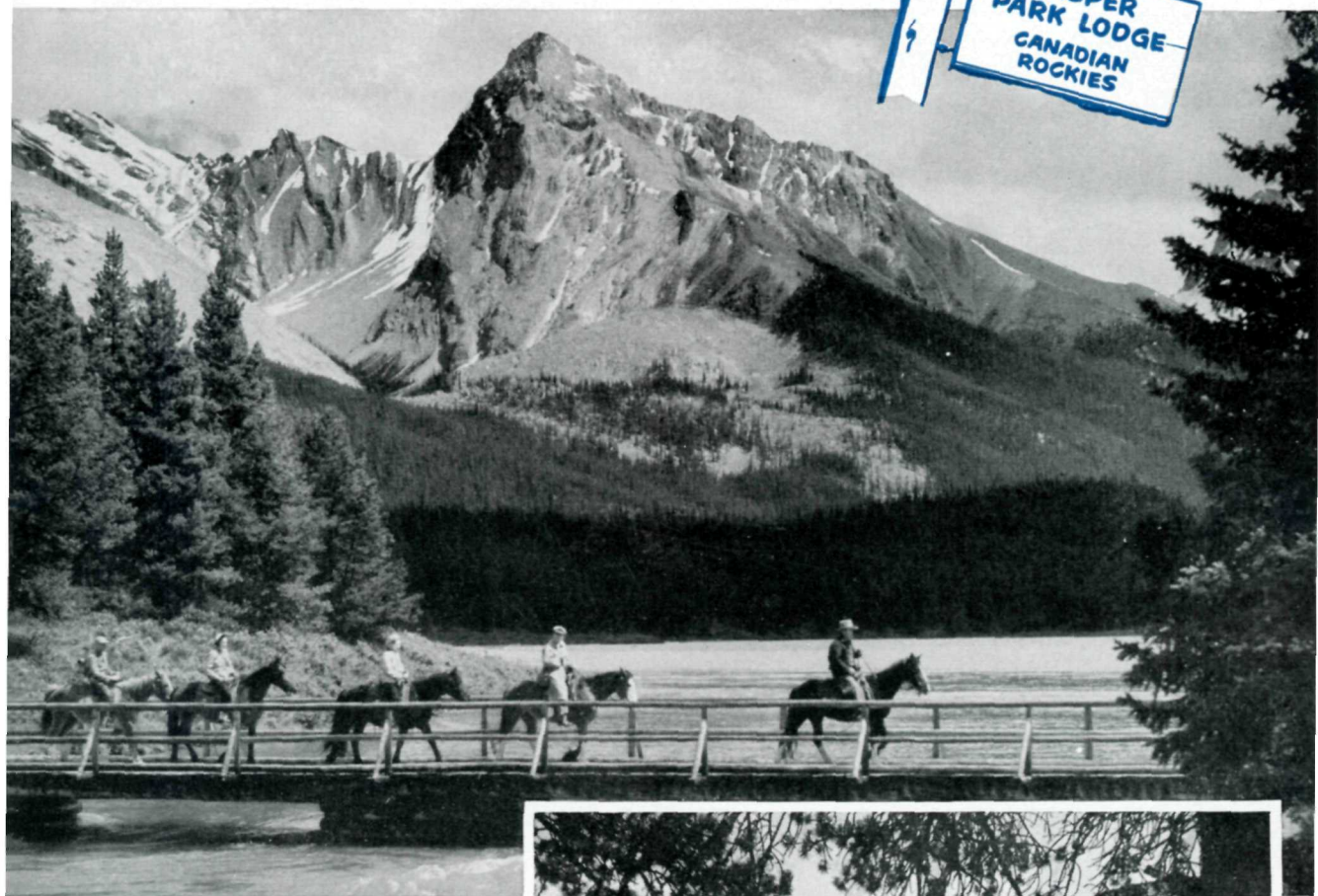
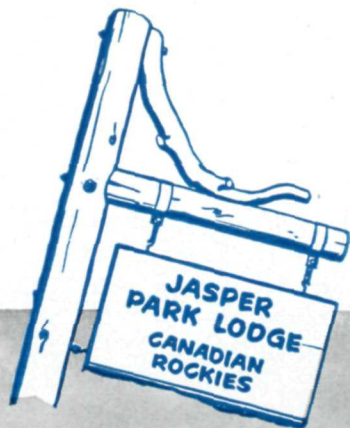
From the Lodge to the end of Maligne Lake and return is a journey of 100 miles and you'd do a lot of travelling to find another 100 miles as fascinating. You can do it in a day by automobile and motor boat or you can ride over the Skyline Trail on a trip that takes four days.

Going the easier and quicker way, you drive from your hotel to the spectacular Maligne Canyon and Medicine Lake. After a five-mile trip across Medicine, another car takes you along the Maligne River to the great lake.

It isn't size that makes Maligne great, although it is the largest glacier-fed lake in the Rockies; it is sheer breath-taking beauty.

Maligne is not only famous for its beauty. Alpinists treat its mountains with respect and speckled trout fishermen sing its praises.

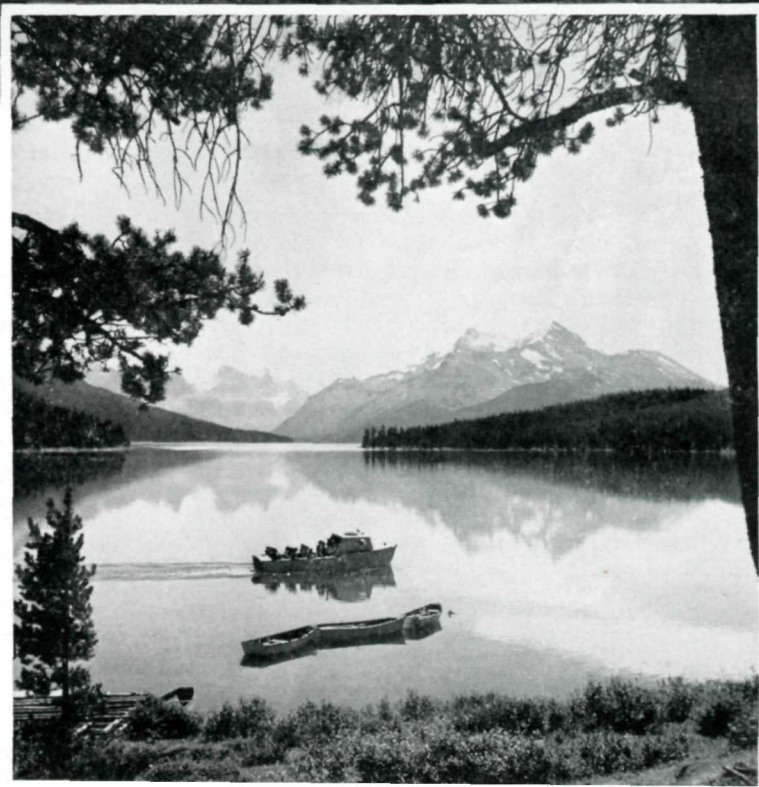




▲ The bridge over the Maligne River leads to Shovel Pass and many trails. Just above the bridge (*background*) is the "million dollar" trout pool.

◆ Modern launches carry you the length of Maligne Lake and back, and provide you with new and unforgettable perspectives of massive, ice-capped peaks.

◆ For those staying over-night at fabulous Maligne Lake, the unpretentious but comfortable chalet becomes headquarters.



The Trails Beckon...



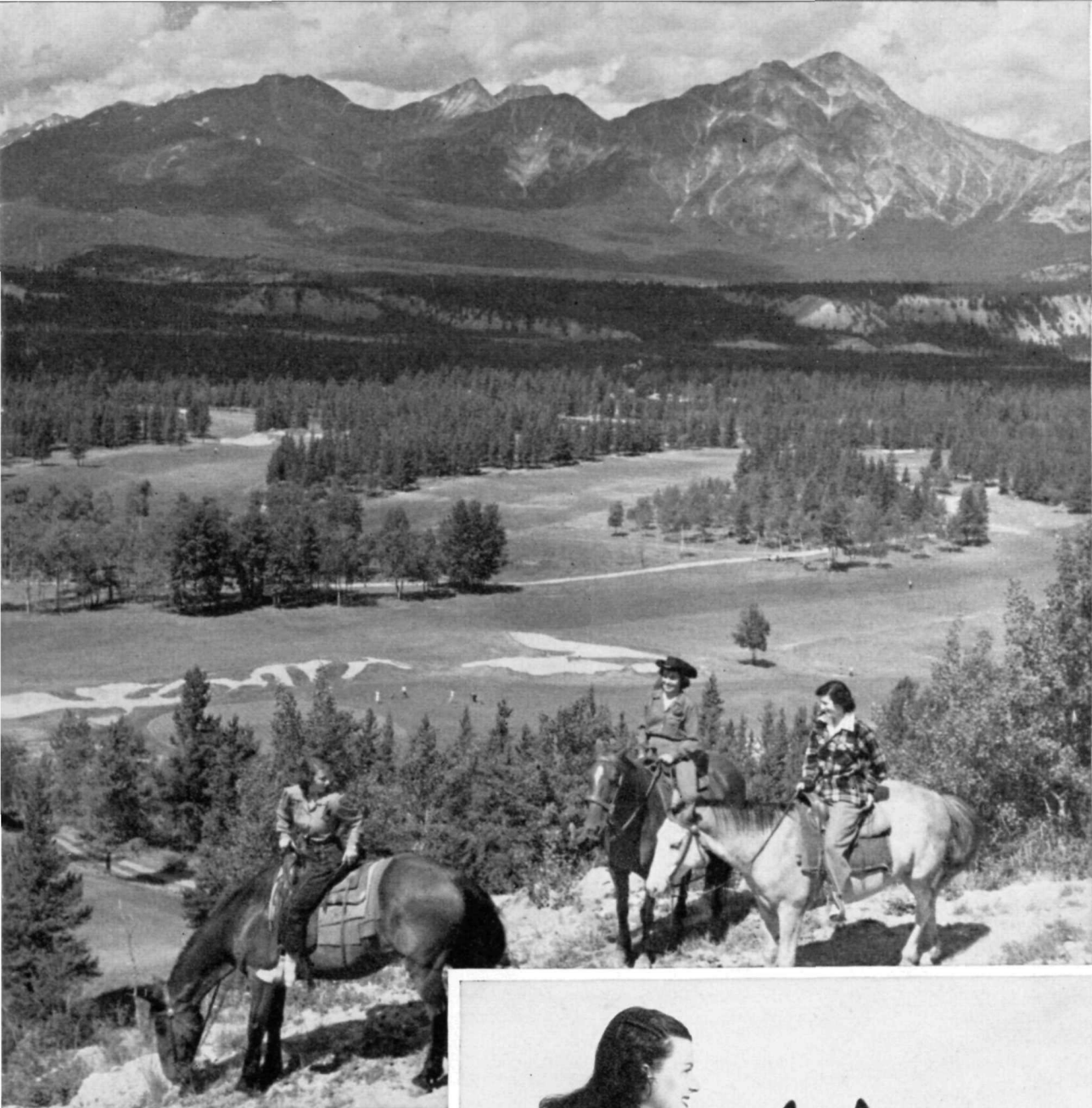
The Tonquin Valley, unforgettable to sightseer and fisherman alike.

Even if they have never been on a horse, most people want to ride when they get to Jasper. Not many of them are Hopalong Cassidys or Roy Rogers'. But the ponies don't mind that: they take everybody in their stride. They're knowing critters, with a pretty good idea of human nature, and if the wrangler happens to be looking the other way when you mount from the wrong side, the ponies won't say anything. They are not all alike, of course, but you will have help finding one to suit your speed—high-spirited if you're experienced, benevolent if you're not.

Once in the saddle, you can really go

places. You'll probably want to start with a short ride—say the seven-mile two-hour trip over the Buffalo Prairie Trail to Old Fort Point, which thrillingly opens up the Athabaska Valley to you. Then you'll graduate to Maligne Canyon or the Sawdust Trail, 12 miles each, riding time three hours.

But even if you're not well seasoned you'll enjoy a trip to the Tonquin Valley, where the jagged Ramparts rise above the Amethyst Lakes, or to Maligne Lake and back over the Skyline Trail. On these longer saddle trips, you will be comfortable in chalets and camps in the midst of mountain splendor at high altitudes.



Trails like this near the golf course with Pyramid Mountain in the background, radiate in all directions, each magnificently scenic.

The horse corral is the focal point for exciting trail rides.



Columbia Ice Field Drive...

Hard as it is to be matter-of-fact in talking about a place like Jasper, we have avoided superlatives in this book. Coming to the Columbia Icefield, however, there is a great temptation to break loose. It is giving the Icefield no more than it deserves to call it one of the wonders of the world.

Covering an area of more than 110 square miles, it is the largest and most impressive body of ice outside the Arctic Circle. Its average elevation between

9,000 and 10,000 feet, its loftiest peaks towering to 11,000 and 12,000, it is the roof of the Canadian Rockies and the geographical centre of the water system of a quarter of North America. Out of its massive glaciers spring streams that swell into mighty rivers carrying fertility to a vast terrain and pouring into three oceans. The 75-mile motor drive along the Jasper-Banff Highway from Jasper Park Lodge is a must for every visitor. The scenery is thrilling and the Icefield is the stupendous climax.

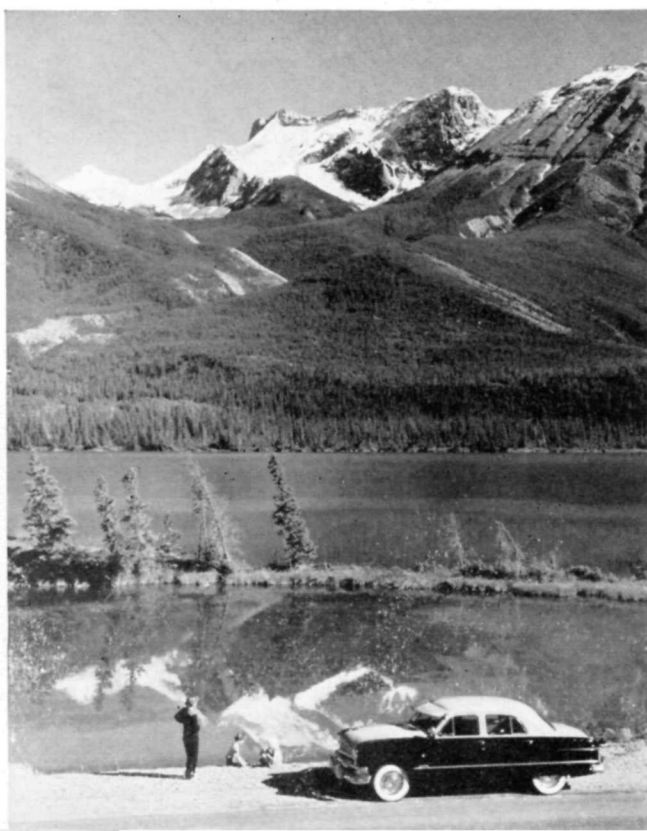
Scene along the Columbia Ice Field Highway with Mount Athabaska and Glacier in background.





Glacier-fed rivers, snow-capped peaks and emerald lakes hold your attention every mile along the Columbia Ice Field drive.

Snowmobiles will take you on an exciting ride high up on the glacier.





There's something to look at in Jasper besides mountains.

You'll find yourself busy photographing the comical bears, athletic contests and even "posed shots".



Bring Your Camera!



When you are happy, time passes all too quickly and your vacation at Jasper seems to go in the twinkling of an eye. What can you do to carry some of it back with you to the workaday world? You can take the health you have stored up and you have your memories. There's something else, though.

"Time flies over us," said Hawthorne, "but leaves its shadow behind." He might have been thinking of photography. Trap the shadows of those delightful hours on the film of your camera! Take Jasper home in movies or stills, in black and white or color.

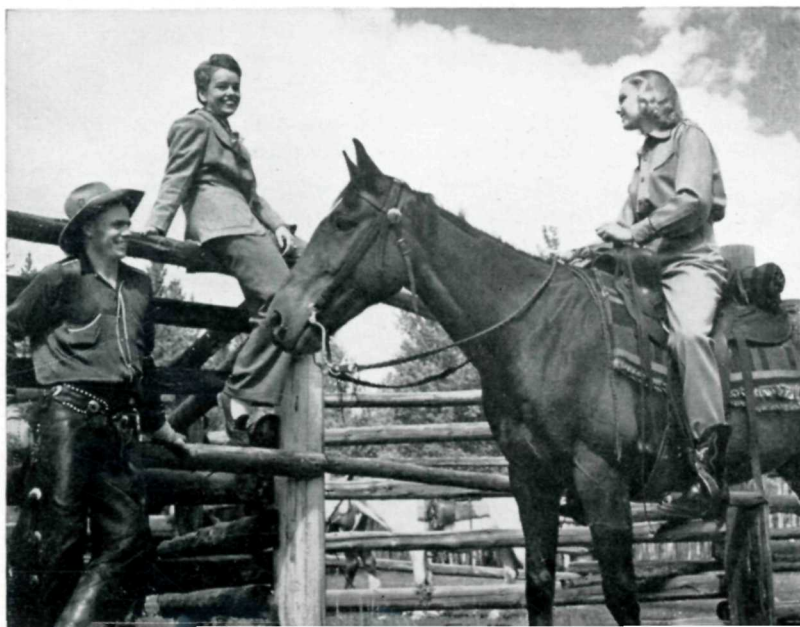




Bike, Saddle or Shank's Mare

Jasper is too big to be seen at a glance. It has to be explored. You can do this on foot and have it revealed to you slowly and in detail. You can take to the saddle and reach places inaccessible by automobile. If you are a cyclist, there is many a road and trail to lead you through its scenic wonders. If you like the panoramic view, a sure foot and a little daring will bring you to heights where Jasper in all its glory lies spread out below.

From the corral you can head out from the Lodge on short rides or long ones.



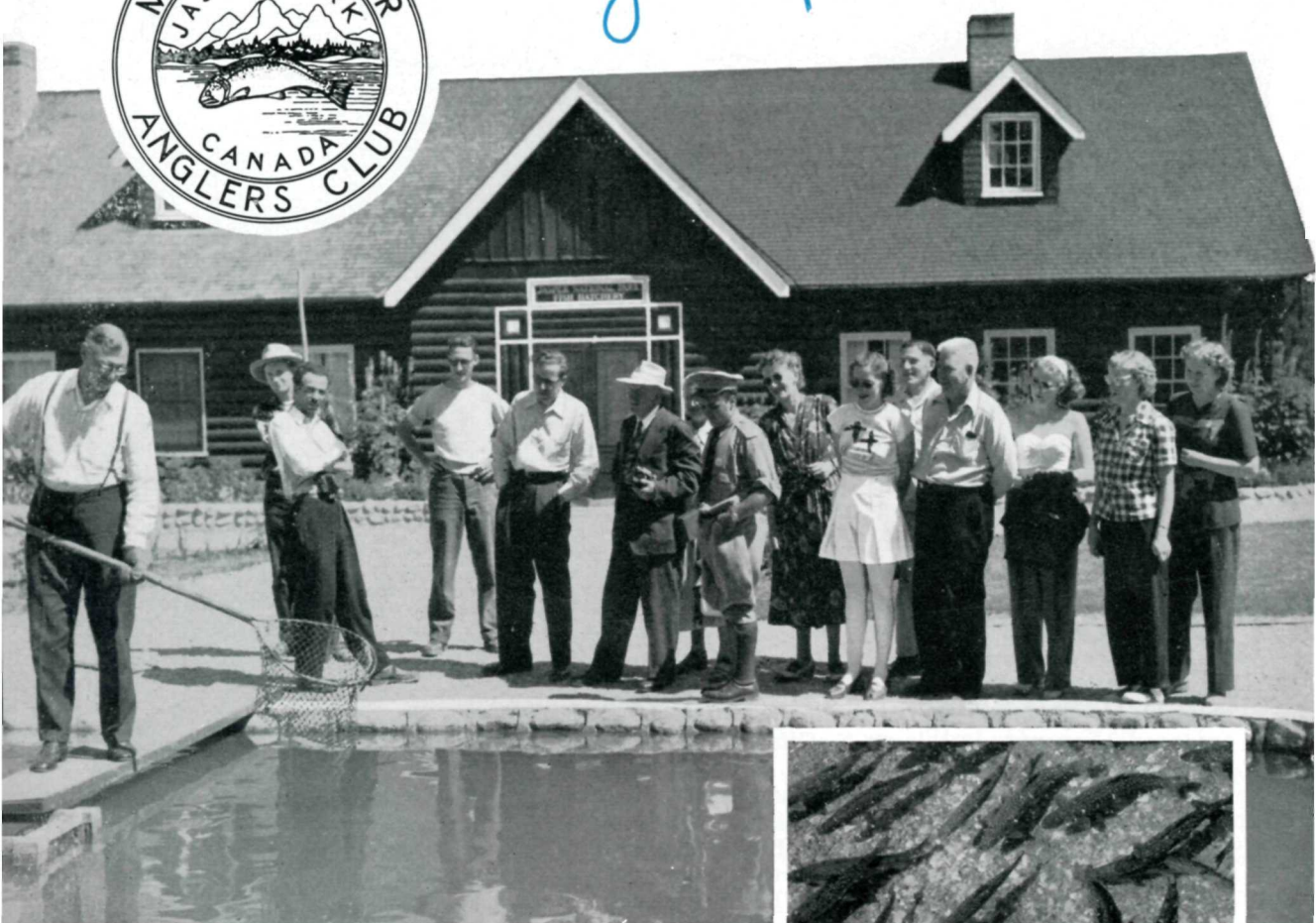
▲ Bicycling is popular at Jasper.

Hikers find Jasper ideal, too.





Game Fish...



The Government Fish Hatchery at Jasper, from which lakes and streams are stocked, fascinates thousands of visitors.



On the lower Maligne River, a few miles from Jasper Park Lodge, you will find the Government Fish Hatchery where hundreds of thousands of eggs are hatched every year and developed into fingerlings so that the lakes and streams of the Park may be well supplied with sporty trout.

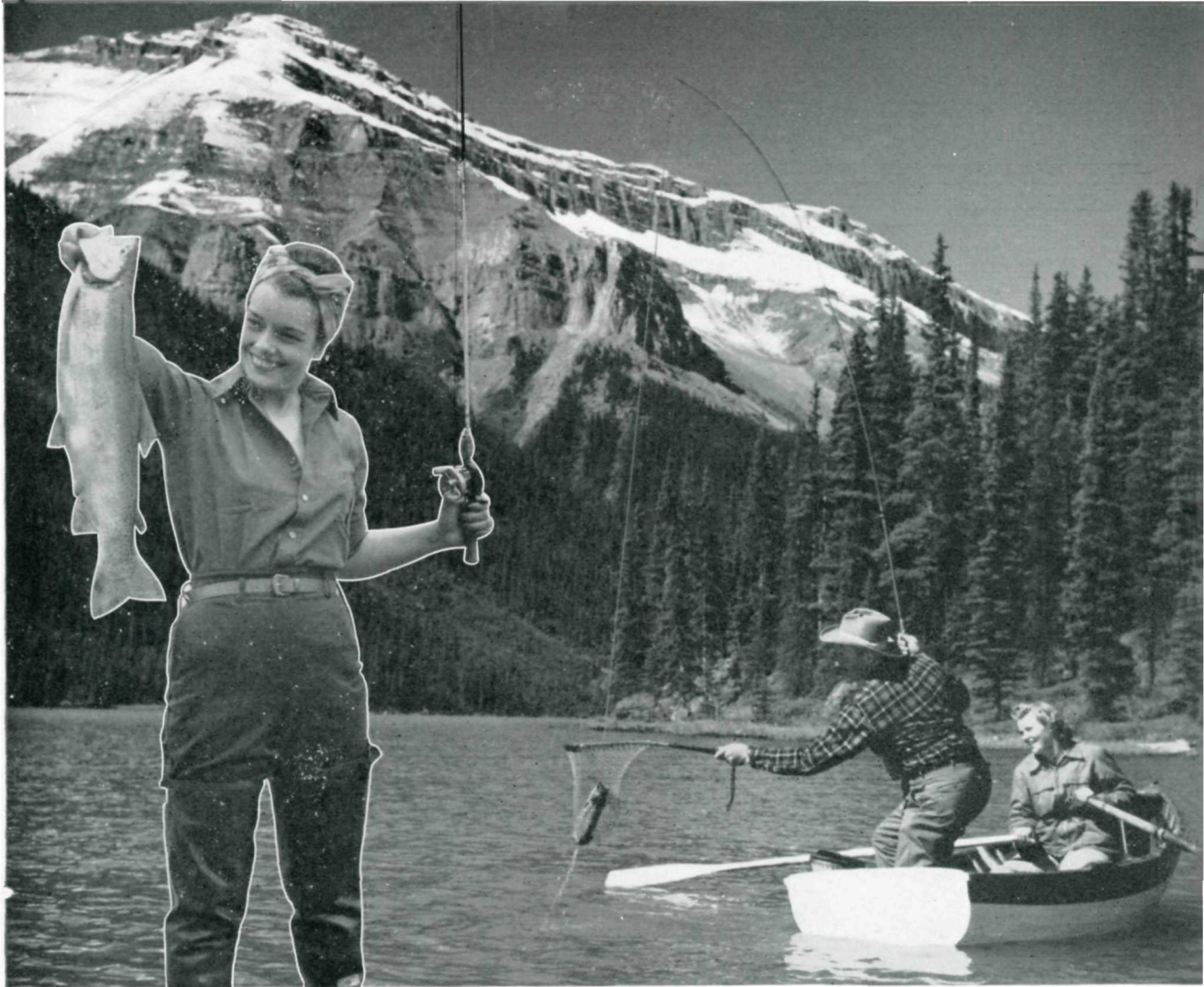
The Hatchery is a fascinating place to visit, even if you're not an angler. If you are, you'll go also to the waters where the fish come to maturity—the Amethyst Lakes and the Astoria River in the Tonquin Valley for Rainbows; Jacques Lake for Dolly Varden; Maligne River and Maligne Lake for Eastern Brook (Speck-

led) Trout. There are fish in plenty of other lakes and streams, too.

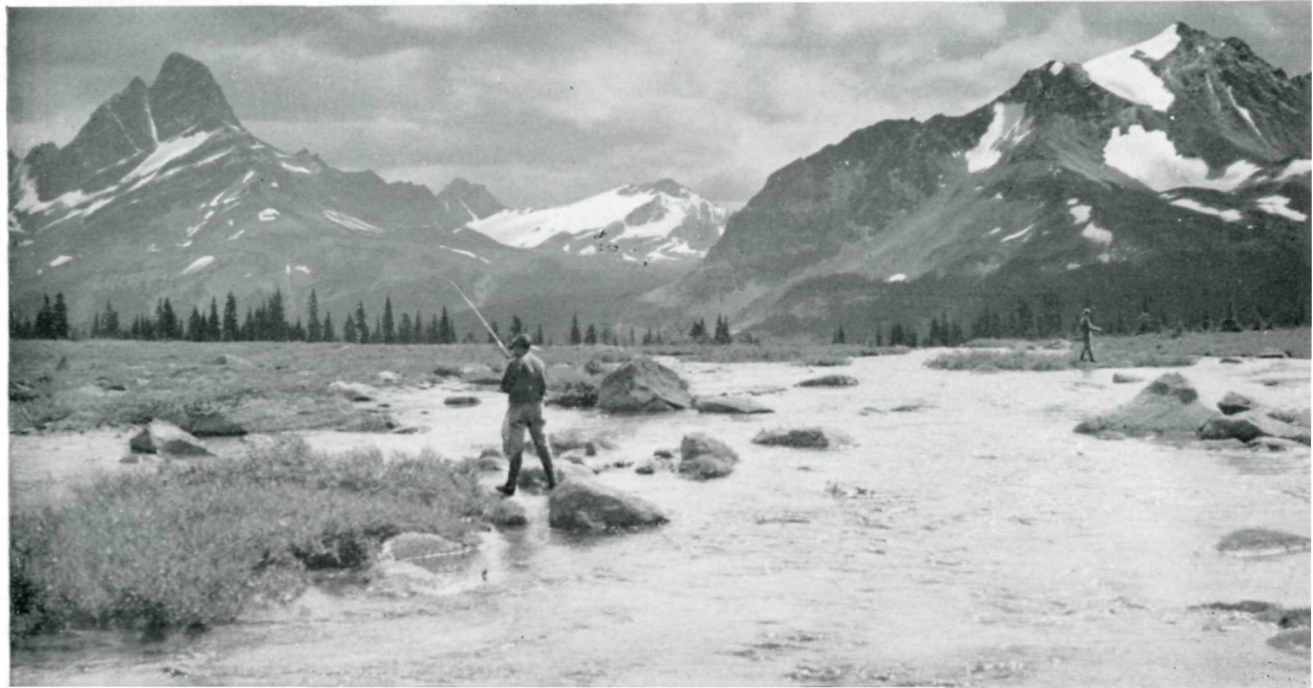
Nearly all the spots are easy to reach and the trout give you plenty of action.

If you go to the Maligne area, you'll undoubtedly become a member of the Maligne River Anglers Club. A fish of a pound or more entitles you to the bronze button. The angler who catches the heaviest trout in the season gets a gold button to prove his championship. A silver button goes to the second.

Happy landings !



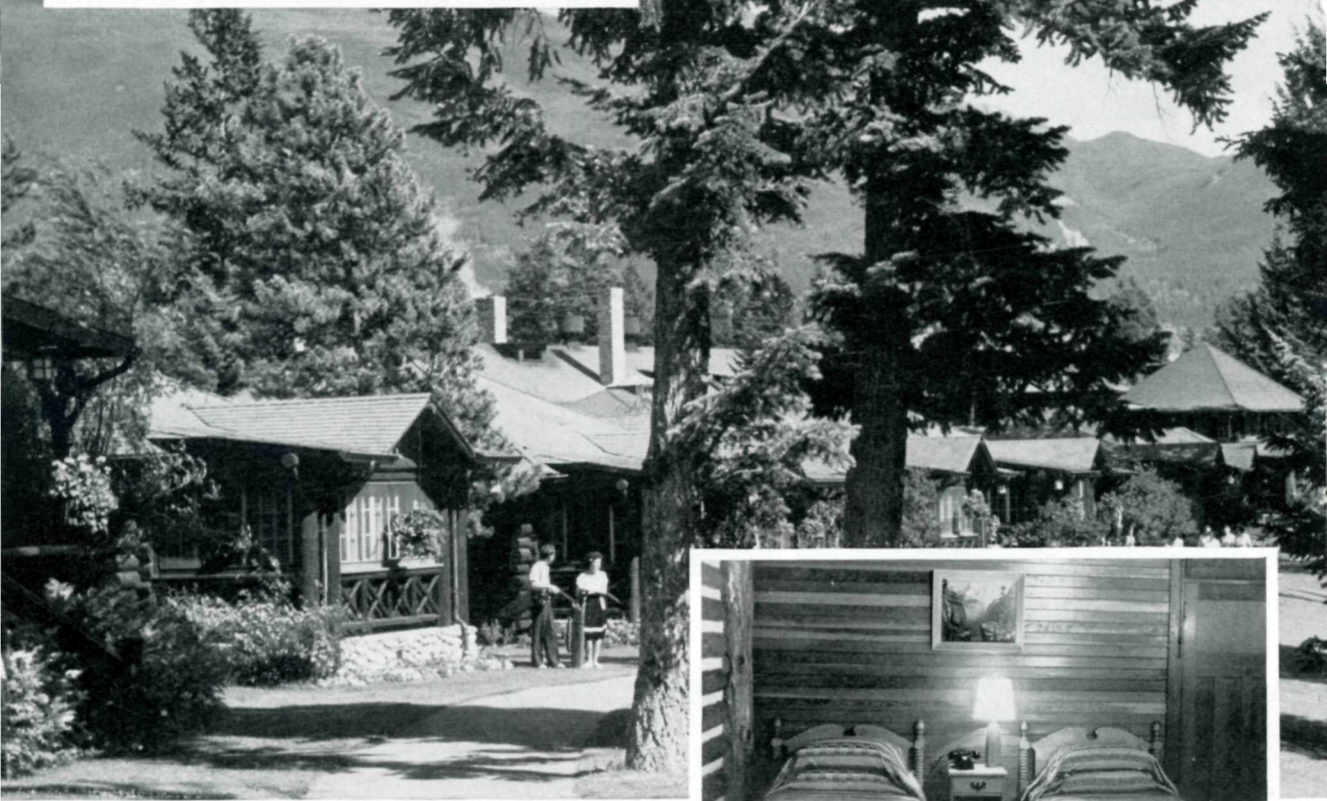
Whether your preference is lake or stream fishing,
you'll find Jasper's Rainbow, Speckled, Dolly Varden
and Lake Trout lively and plentiful.





Log Bungalow Luxury...

◀ You'll enjoy the comfort of the lounge in your bungalow.



Living is gracious and friendly in these attractive log bungalows, set among vivid green lawns and trees, and overlooking lovely Lac Beauvert in a setting of alpine grandeur.



You'll sleep well at Jasper Park Lodge.

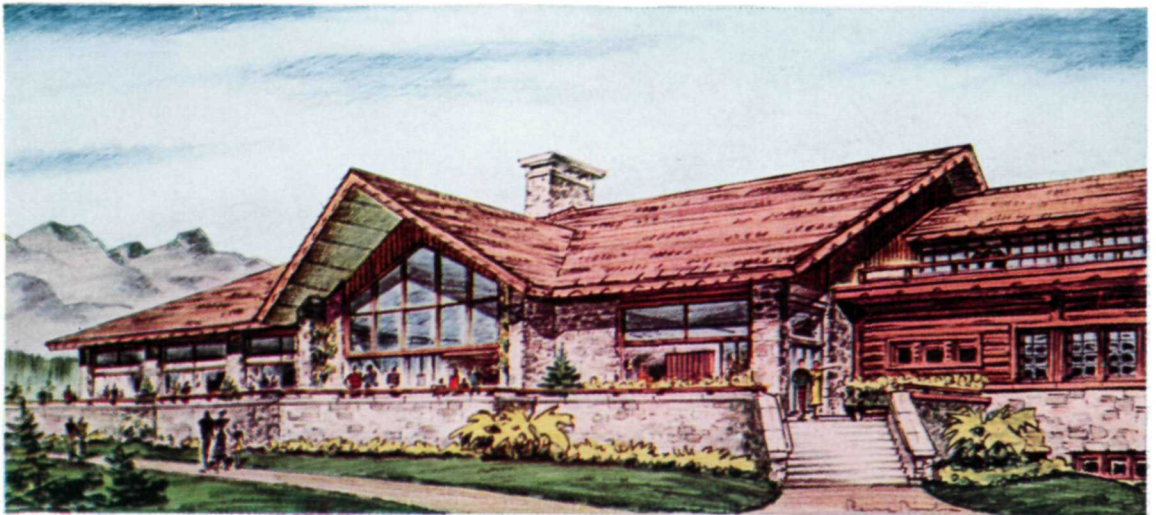
The New Central Building

This summer, a new central building will greet visitors to Jasper Park Lodge. Those who are coming "home", as well as new guests who have heard about Jasper Park Lodge but never seen it, will find the familiar and famous Jasper—the little village of cedar bungalows among the evergreens on the shore of the lovely lake; the swimming pool, the golf course; the trails and highways leading to the trout lakes and streams, to the splendors of Maligne and the Columbia Icefield. But they will find in the central building that something new, beautiful and modern has been added.

The new building, 40 per cent larger than the structure it replaces, is of fire-proof reinforced concrete, steel, brick and fieldstone. Except for a lower level—housing a recreation room and such facilities as the beauty parlor and the barber shop—and several suites of guest rooms which are to be completed above one of the wings, everything is kept to one floor, thus retaining the character of the central building as it has been known to the

travelling public for a quarter of a century. The building is not alien to its surroundings. It is essentially of the mountains; offering shelter and warmth, comfort and luxury. Yet it is not shut off from the great outdoors. Wide windows and a long skylight of non-glare glass keep the way open. The fieldstone of the walls brings the outdoors into the building in partitions and piers and the immense double fireplace that is the focal point of the lounge. The floor of the entrance lobby and the administration wing is paved with slate. There is a suggestion of traditional alpine architecture in the peaks and gables with the wide overhang. The roof is shingled with sturdy cedar "shakes" and cedar logs are used in some of the walls to tie the structure in with the bungalows that surround it. A bit of imagination that should appeal to the guests is the enclosed patio and pool surrounded by four wings of the building but open to the sky.

The areas are big. For example, the main dining room is built to accommodate

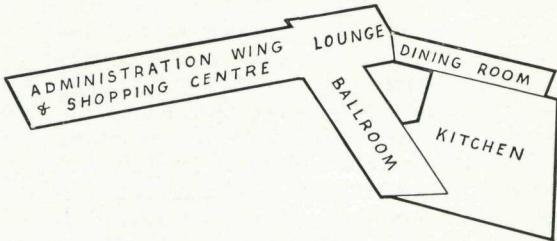


Sketch of exterior of the lounge as it will be seen from Lac Beauvert.

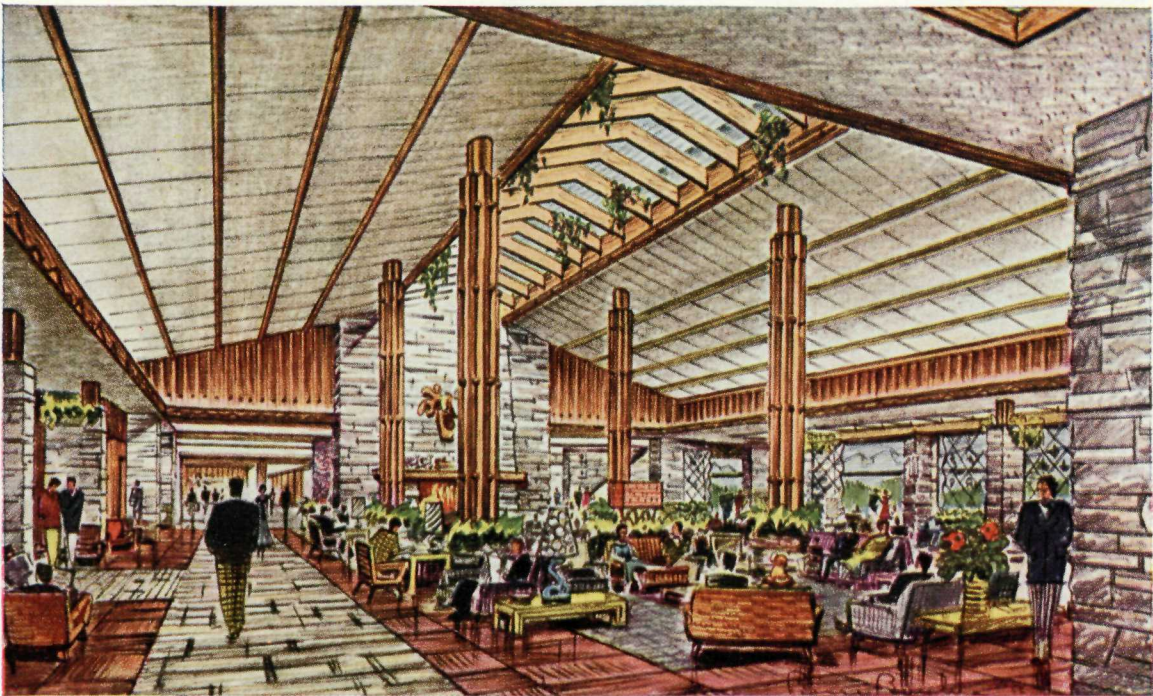
600 at a sitting, but by sloping the high ceiling and judiciously breaking the long line of windows with stone piers and providing, in addition to the indirect lighting, chandeliers of wrought iron, the architects have brought the scale into intimate proportions. The same is true of the lounge. It is 90 by 160 feet, but has a club-like atmosphere, the style and grouping of the furnishings, the big stone fireplace, the pillars and the skylight over a wooden grill all working together to create comfort as well as spaciousness. The ballroom, 40 by 132 feet, can be divided by sliding doors for banquets and

convention meetings. The administration wing, 120 by 75 feet, houses the hotel offices and the shops.

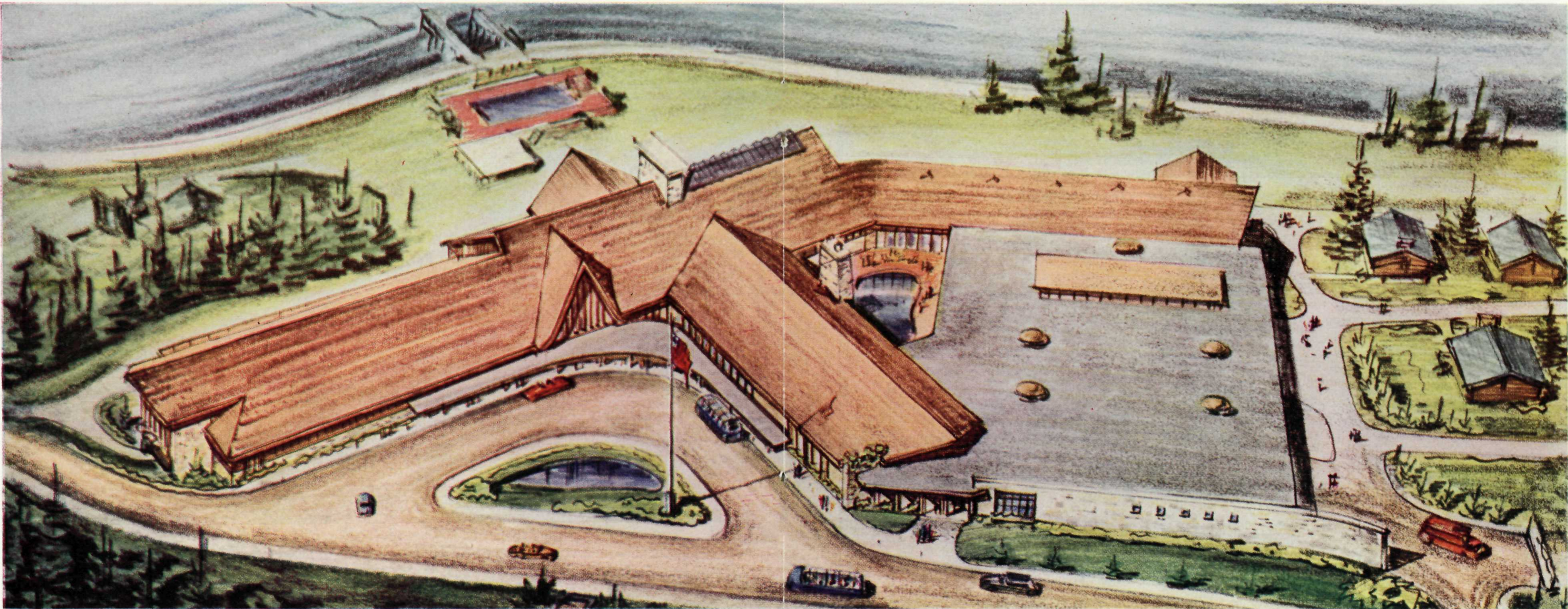
The building is new, but the character is the same and the spirit behind it is the same old spirit, summed up in the motto of the Canadian National Railways—"Courtesy and Service".

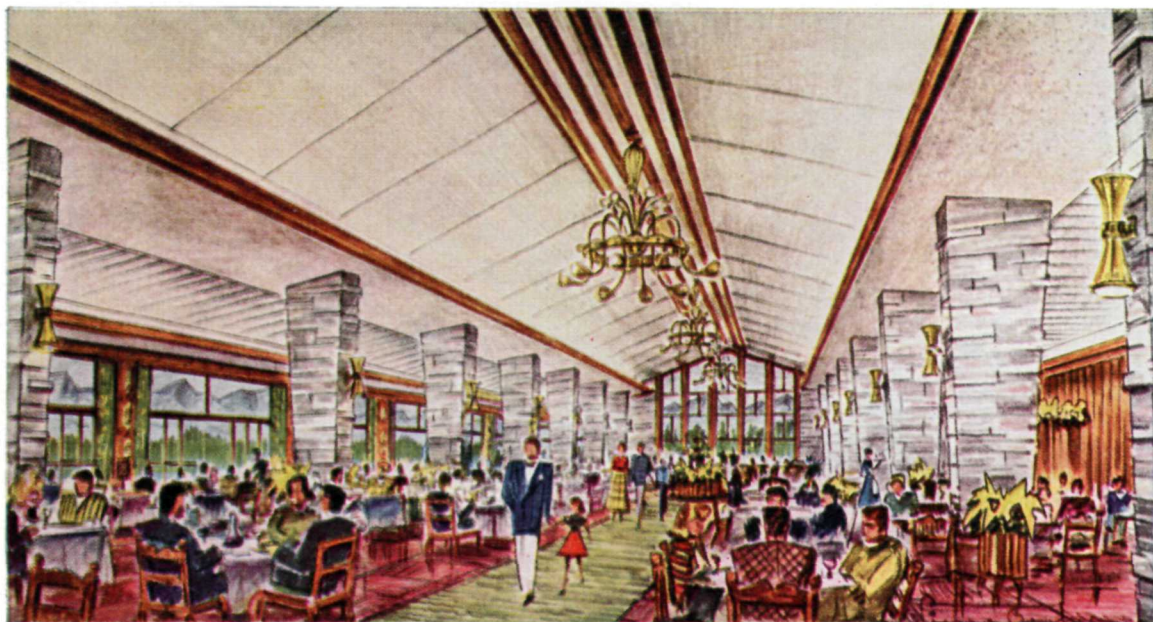


Bird's eye view of general layout of the new Central Building. Diagram identifies the various wings.



Architect's sketch of portion of the lounge looking from the dining room.

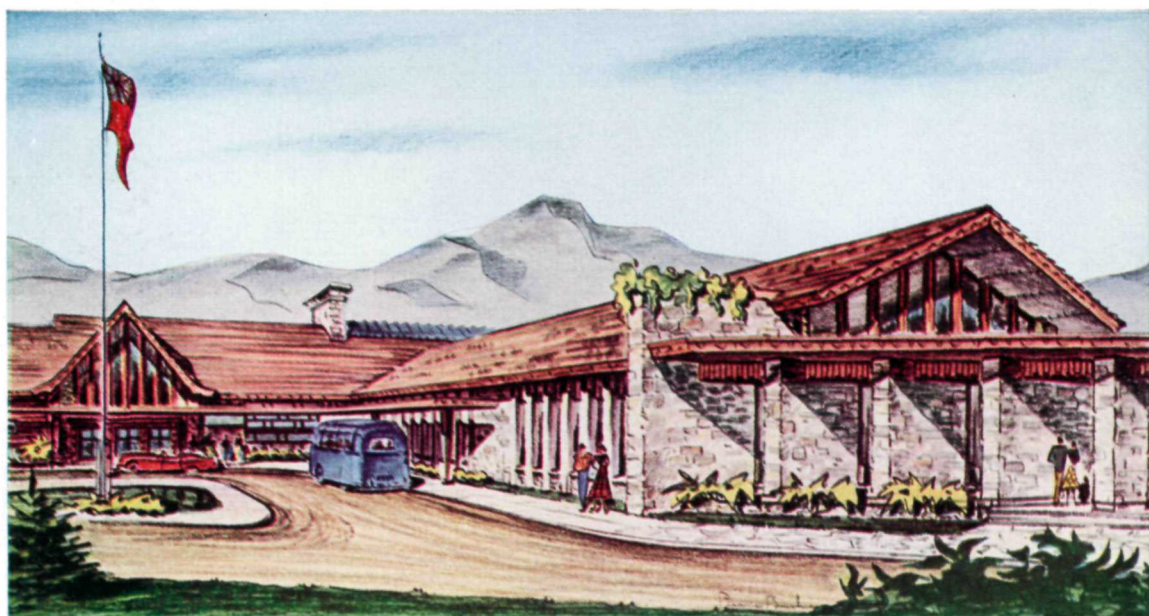




This sketch shows about one half of the new dining room.



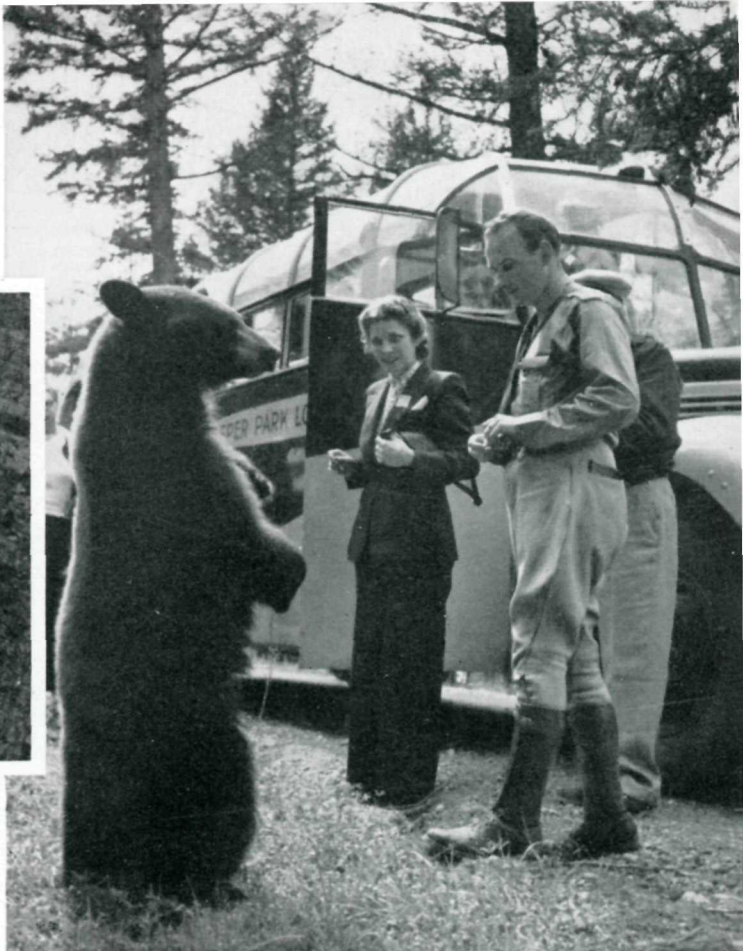
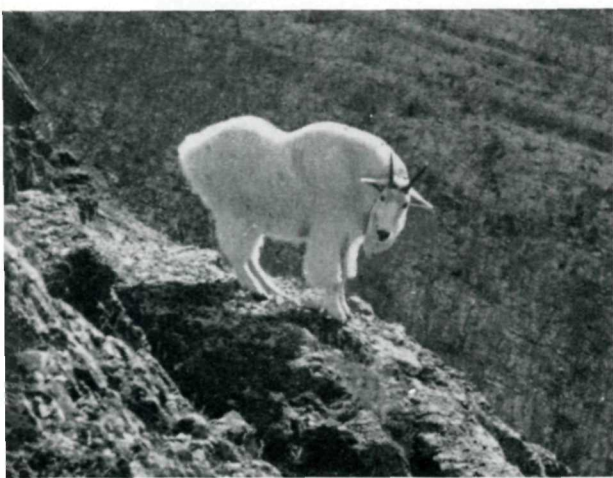
Exterior of the dining room wing as seen from Lac Beauvert.



Main entrance (*left centre*) with exterior of ball room (*right*).

The bears are plentiful and frequently good camera subjects.

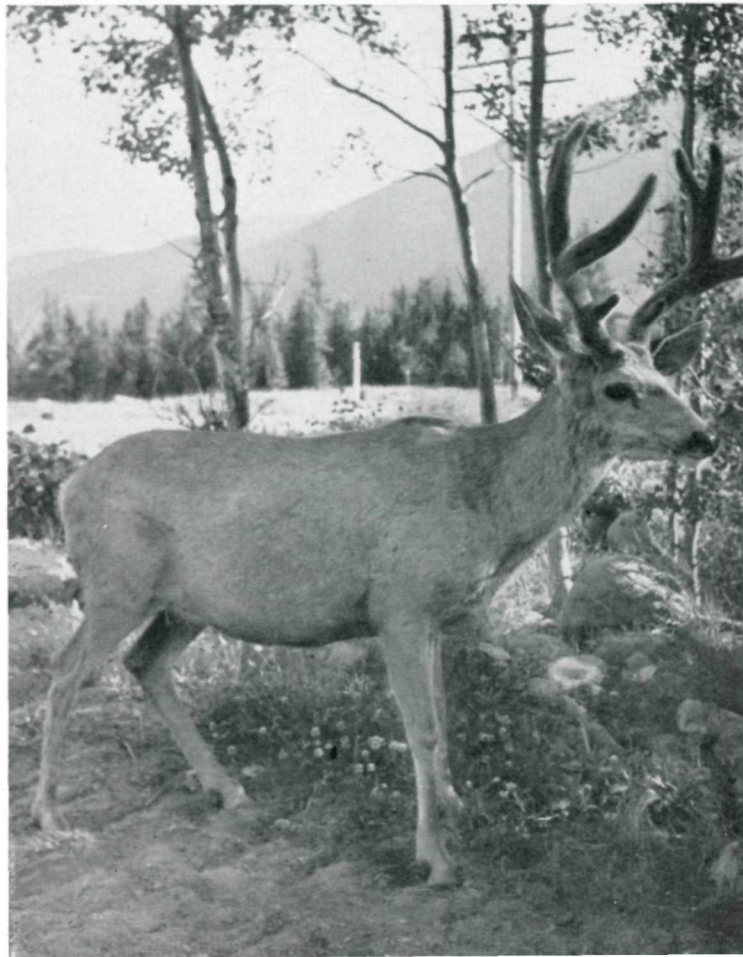
Even Mountain Goat can be seen at close range.



Wild Life...

Jasper's first citizens are its animals, the park being a wild-life sanctuary where only camera-shooting is allowed. Mule deer and comical bears are always on hand to greet visitors and pose for pictures. Harder to meet are moose and elk; the highstepping mountain goat and bighorn sheep, but patient hunting will bring them within range of your lens.

It's easy to make friends with the soft-eyed mule deer.





Tallest of them All...



Mount Robson, Monarch of the Rockies, altitude 12,972 feet, is in full view for many miles from the Canadian National lines west of Jasper.

At Jasper you are only two short hours away by train from the highest peak in the Canadian Rockies. This is Mount Robson, which towers up just outside the west boundary of Jasper National Park over the Great Divide in British Columbia. Armored in eternal ice and snow, it is a glorious sight from the Canadian National Lines to Vancouver and Prince Rupert.

But its majesty is even more apparent from close range. On foot or on horseback, you may make your way through the Valley of a Thousand Falls, past the

roaring Emperor Falls, around the great mountain to Berg Lake on the north side. Here three immense glaciers cling to Robson's flanks. From the most spectacular, Tumbling Glacier, great blocks of ice break off and hurtle into the shining lake to become icebergs.

Mount Robson Provincial Park is the centre of superb big game hunting. Accommodations are good and reliable guides, who know the territory as well as the palms of their hands, see that you get sport at its best.

Details of Activities

IN JASPER NATIONAL PARK AND AT JASPER PARK LODGE

Horse-back riding, mountain climbing, hiking, motoring, golfing, tennis, boating, canoeing, fishing, swimming, dancing, motion pictures, and table tennis are among the recreational attractions. Details of all activities are described in the following pages. Further information may be obtained at the Motor Transportation Desk or from "Fred Brewster's Rocky Mountain Camps" in the Central Building, Jasper Park Lodge.

SWIMMING POOL

With guests of the Lodge the swimming pool ranks as one of the most popular attractions. Constantly changing crystal-clear glacial water, filtered and heated before entering the pool, adds to the pleasure of a dip and ensures sanitary freshness. In attendance is a competent swimming instructor, with whom arrangements can be made to take lessons in swimming and diving. The use of the pool is given free to guests of the Lodge, but a charge of 25c each is made for the rental of bathing suits. Dressing rooms are equipped with showers.

GOLF

Arrangements for golfing on the Jasper Park Lodge Golf Course can be made at the Golf Club House, situated 300 yards from the Central Building. A Professional of the highest standing as player, instructor, and club maker is in attendance. Equipment can be either purchased or rented.

Family Rates

Rates for Golf	Per Person	First Person	Others (each)
Per round or per day...	\$3.00	\$3.00	\$3.00
Per week.....	18.00	18.00	9.00
Per month.....	60.00	60.00	30.00
Per season.....	90.00	90.00	45.00

Caddie Fees

18 holes.....	\$2.00
9 holes.....	1.25

GOLF WEEK

September 6th to 12th, 1953

For special All-inclusive Rates from all points in Canada and the United States, consult your nearest Canadian National Passenger Representative.

TENNIS

Four hard-surfaced courts are available to guests free of charge. Guests should bring their own racquets. Tennis balls are sold at the Novelty Shop.

TABLE TENNIS

In the Recreation Room, Central Building.

BOATING

Canoeing on Lac Beauvert is a favoured pastime. Boats and canoes are available for rent at 50 cents per hour.

FISHING

Speckled trout fishing waters are found at Maligne Lake and Maligne River, as well as at Medicine Lake and Beaver Lake, where fighting Eastern Brook Trout, artificially propagated, await the angler.

Jacques Lake, situated between the Maligne and Rocky Rivers, offers Dolly Varden trout, Beaver Dam Creek (four miles from the Lodge), Wabasso Lakes and Buffalo Prairie (ten miles distant), and Hardisty Creek at Athabaska Falls (twenty-one miles away), are stocked with Rainbow trout.

Amethyst Lakes in the Tonquin Valley, abundantly supplied with Rainbow trout, offer excellent sport.

Chalets, boats and boatmen, are available. Arrangements for the journey to these lakes and chalets by automobile, motor boat, and saddle-horse, can be made at "Fred Brewster's Rocky Mountain Camps".

Fishing tackle of a limited variety may be either purchased or rented in the town of Jasper. Enquire at "Fred Brewster's Rocky Mountain Camps" in the Central Building.

LICENCE REQUIRED FOR FISHING

A license is required to fish the waters of Jasper National Park. This can be obtained from front office cashier, Jasper Park Lodge, or from the Park Wardens at a cost of \$2.25 per person for entire season, or \$1.00 for two months from date of issue.

Anglers must have licences in their possession while fishing.

AUTOMOBILE SIGHTSEEING DRIVES AND OTHER MOTOR SERVICES

Arrangements can be made at the Motor Transportation Desk in the Central Building of Jasper Park Lodge for all scheduled and special motor trips.

Jasper Park Lodge owns and operates its own transportation system and its automotive equipment consists of luxurious passenger automobiles and buses. The chauffeurs, besides being experienced drivers, are well versed in the history and lore of the Park. They thus make thoroughly competent guides, whose knowledge and experience add much to the journeys along these historic trails.

Guests holding drive coupons are requested to present them at the Motor Transportation Desk as soon as possible after arrival in order to facilitate their trip arrangements.

Private touring cars will be operated on any regular drive, when cars are available without interrupting or interfering with regular services. Minimum charge: 5 full bus fares.

Half fare for children under twelve years on all motor drives.

No passports required by U.S. citizens to enter Canada, but it would be helpful to carry some proof of United States' citizenship, such as a birth certificate or Voter's Registration Card.

A friendly welcome awaits you at the Border and throughout the Dominion.

Canadian currency is now on the free market and its value in terms of U.S. dollars may fluctuate from day to day. Americans, if they so desire, may buy Bank Drafts payable in Canadian funds, or Canadian currency from their own bankers in the United States. When exchanging U.S. dollars at Jasper Park Lodge, such funds will be converted at the current rate of exchange.

SIGHTSEEING MOTOR DRIVES

NOTE:—Starting point of all sightseeing drives—Main Entrance, Jasper Park Lodge.

The Station Agent at Jasper will make arrangements for railway patrons, who are not guests of the Lodge, to be taken from the station, in Jasper Park Lodge motor equipment, on any of the scheduled drives, Nos. 1 to 8, inclusive. Regular rates will apply.

Departure hours and schedules for these drives have been carefully planned to permit visitors to view without haste the scenic wonders of the Park.

No. 1: General Drive—Thirty-five miles return. Motors leave the lodge at 9:30 a.m. and 2:30 p.m. Time, approximately 3 hrs. Bus fare per person, \$4.00. This drive embraces a wide variety of valley, lake, canyon, and mountain scenery and includes a visit to the Fish Hatchery and a side trip to see the bears. The route, after following the Athabaska River, skirts Lakes Annette and Edith before gradually ascending the roadway to Maligne Canyon. From this vantage point the tourist stands in awe before the snow-capped grandeur of lordly mountains and the mighty sweep of the Athabaska Valley, which loses itself in endless vistas of alpine beauty. Maligne Canyon, a tremendous gorge descending to a depth of 188 feet, and remarkable for its potholes, is a never-ending source of wonder and amazement. On the return journey the Athabaska River is followed to its junction with the Maligne River where a stop is made to view the Government Fish Hatchery; from here the route continues over the Athabaska River bridge to join the Main Highway to Jasper, where a glimpse is obtained of "the Raven", one of the largest totem-poles in existence. Continuing along to the foot of Pyramid Mountain and passing en route Lakes Patricia and Pyramid, the drive again runs through Jasper before terminating at the Lodge.

No. 2: Glacier of the Angel (Mount Edith Cavell)—Forty-four miles return. Motors leave the Lodge at 9:15 a.m., and 2:30 p.m. Time, approximately 3 hours. Bus fare per person, \$4.00. Offering excellent motoring, this drive by a course of wide-sweeping switchbacks reaches an altitude of nearly 2,000 feet above the floor of the valley and gives the tourist an ever-changing series of strikingly beautiful panoramas. The highway, terminating at the foot of the famous glacier, affords an excellent view of this vast field of living ice. *The highest point reached on this drive is 6,300 feet above sea level.* Light lunches and refreshments can be obtained at the Tea Room near the foot of the Glacier.

No. 3: Miette Hot Springs and Fiddle River Canyon—Eighty miles return. Motors leave the Lodge at 9:00 a.m. Time, approximately 4 hours. Bus fare per person, \$6.00. The route, after skirting the shore of Lake Mildred, follows the Athabaska River, which it crosses to join the Inter-Provincial Highway, whence it extends for miles down the Athabaska Valley to Jasper Lake and beyond to Punch Bowl Falls. A short stop is made to view this unique waterfall, and then the trip continues along the rim of the Fiddle River Canyon for another eleven miles before finally reaching the famous Miette Hot Springs. At this point, hot sulphur spring water, varying in temperature from 79 to 128 degrees F., comes boiling out of the mountain side. Motors will remain long enough to permit bathing in the pool. *The highest point on this drive is 4,510 feet above sea level.*

The Miette Hot Springs consist of three main springs, which issue from the rocks along the banks of Sulphur Creek. The springs, non-volcanic in nature, owe their heat to chemical action, caused by surface water coming in contact with certain minerals in the limestone rock formation. The combined flow of the three springs reaches a total of approximately 170,000 gallons every 24 hours.

The Swimming Pool and the Steam Baths at Miette Hot Springs are operated by the National Parks Department.

The rates are:

Swimming Pool—when bathing suit and towel are supplied by the Department: adults, 35c.; children, 25c. When bathing suit and towel are supplied by bather: adults, 25c.; children, 15c. Steam and Plunge Baths—50c. per person.

No. 4: Columbia Icefield (Jasper-Banff Highway)—One hundred and fifty miles return. Motors leave the Lodge at 9:00 a.m. Time, approximately 7 hours. Bus fare per person, \$10.00. Minimum, 5 persons. The drive follows the route of the Mount Edith Cavell Drive to a point beyond the crossing of the Astoria River, whence it continues along the valley of the Athabaska. From here the route penetrates through the very heart of the Canadian Rockies to the largest and most impressive icefield outside the Arctic Circle. With an estimated area of 110 square miles, the average elevation of this amazing icefield is between 9,000 and 10,000 feet, which because the waters of its melting glaciers travel thousands of miles to three oceans, the Atlantic, the Pacific, and the Arctic, has been beautifully named "Mother of Rivers". **Unquestionably, this is America's Greatest Scenic Drive.** *The highest point reached on this drive is 7,000 feet above sea level.*

This trip is also operated as an afternoon and evening drive, leaving the Lodge at 2:30 p.m. It is arranged for those who wish to see the wild animals which in the evening twilight come down from the mountains and forests to the rivers and streams along the route of this great highway.

No. 5: Geikie Twilight Drive—25 miles return. Motors leave the Lodge at 7:00 p.m. Time, approximately 2 hours. Bus fare per person, \$3.00. This drive, sometimes referred to as the Sleepy Hollow Drive, passes through the town of Jasper and proceeds along a beautiful road winding through a quiet valley with here and there a contrasting noisy waterfall tumbling down to join the Miette River; the route continues West following the Miette River along the base of Whistlers Mountain to Geikie.

No. 6: Maligne Canyon—Medicine Lake (auto-motor boat)—40 miles return. Motors leave the Lodge at 1:30 p.m. Time, approximately 4½ hours. Cost per person, \$6.50. The route is over the road to Maligne Canyon and beyond for fourteen miles to the lower end of Medicine Lake; at this point passengers are taken on a scenic motor-boat cruise across the lake. A unique feature of this lake is that, although thirty feet deep during the summer, it completely disappears through invisible outlets in the Fall of the year.

No. 7: Maligne Canyon—Twelve miles return. Motors leave the Lodge at 10:00 a.m. and 2:30 p.m. Time approximately 1½ hours. Bus fare per person, \$2.00. This canyon, into which the Maligne River plunges through a gorge 188 feet deep, ranks among the most extraordinary in the Canadian Rockies. The route lies over a gradually ascending roadway from which the tourist obtains magnificent views of lordly mountains and charming vistas of the Athabaska Valley. The fish hatchery on the lower Maligne River beyond Lake Edith is also of interest.

No. 8: Punch Bowl Falls—"A Twilight Drive"—Sixty miles return. Motors leave the Lodge at 7:00 p.m. Time, approximately 3 hours. Cost per person, \$3.50. The route, after skirting the shore of Lake Mildred, follows the Athabaska River, which it crosses to join the Inter-Provincial Highway, whence it extends for miles down the Athabaska Valley to Jasper Lake, and beyond to Punch Bowl

Falls and Valley. Affording a very wide variety of mountain scenery, this trip is highly recommended as an evening drive, for after sunset, animal life frequents the numerous lakes and streams in this region, and it is usually possible to see sheep, goats, deer, bears, moose, etc., from the motor-car. Return to the Lodge in ample time for dancing, bridge, etc.

SPECIAL MOTOR SERVICES

Medicine Lake—Beaver Lake—Lower Maligne River. Provided arrangements are made at the Motor Transportation Desk before 9:00 p.m. the evening prior to departure, anglers who wish to fish these waters can leave Jasper Park Lodge at 8:00 a.m. and leave Medicine Lake on return at 5:00 p.m. For this service a charge of \$5.00 per person, minimum two persons, will be made. Should a party make the trip at any time other than the foregoing, an extra charge of \$5.00 for one person, and \$2.50 each for two or more persons, will be made. If boats, guides, fishing tackle, etc., are required, notice must be given at "Fred Brewster's Rocky Mountain Camps" in the Central Building before 9:00 p.m. the evening prior to departure.

Maligne Lake—Medicine Lake. One day combination return motor and launch trip to far end of Maligne Lake, cost \$24.00—see page 28 for details of this and other Maligne Lake trips.

Picnic Parties—By arrangement, special buses, when available, will be operated to picnic sites. Cost per person, \$1.00 for the round trip; minimum charge, \$10.00 per round trip.

By arrangement, touring cars, if available, can also be engaged for this service at special rates.

Trips to Jasper—In addition to the scheduled bus trips to Jasper, cars, when available, can also be obtained at the following rates:

One way—one to three persons, \$2.00, each additional person 50c.

For motor coach service over the Columbia Icefield Highway between Jasper and Lake Louise, Banff, and Calgary, see page 39.

Round trip—one to three persons, \$3.00; each additional person \$1.00.

Time, including shopping, not to exceed one hour for the round trip; extra waiting time will be charged for at the rate of \$3.00 per hour.

A Shopping Bus to Jasper and return operates daily (except Sunday) at 10:30 a.m. and 4:00 p.m. Cost, 50c. per person return.

Theatre Bus to Jasper every evening, except Sunday. Cost, 50c. per person return.

TAXI SERVICE—Taxi Service within the Lodge area, e.g., to the Golf Course, to the pony barns, or to and from the cabins: 25c. per person, minimum 50c. for the trip; to see the bears: 25c. per person, minimum \$1.00 for each trip.

During inclement weather, free motor transportation is provided between the cabins and the Central Building.

Free motor transportation is provided every Sunday morning for guests who wish to attend Church Service in Jasper. Buses leave the Main Entrance at 7:45, 10:00 and 10:45 a.m.

Motor-car Services are available at all times between 6:00 a.m. and 12:00 midnight, at the regular tariff rates. After midnight, a charge of \$2.00 will be made for each car movement within the Lodge area; outside the Lodge area, special rates will apply for any car movement between 12:00 midnight and 6:00 a.m.



To the artist, celebrated or unknown to fame, Jasper is paintable in a thousand aspects.

U.S. Government Revenue tax, when applicable on tickets or orders purchased in U.S., is additional to rates quoted above.

THE MALIGNE DISTRICT

In advertising the following services the Canadian National Railways act only in the capacity of Agents; therefore, while highly recommending the Outfitters to guests, it does not assume any legal responsibility whatsoever relative to the services provided.

The Maligne district is one of the most interesting in the Park, not only on account of its remarkable canyon as referred to on Page 28, but because of its two beautiful lakes—Medicine and Maligne. The drive to the latter, with boat trip to the head of the lake, provides unforgettable glimpses of the beauty and grandeur of a great mountain world.

Medicine Lake, about 15 miles distant from Jasper Park Lodge and reached by automobile, is five miles long and a little over half a mile wide. Leaving Medicine Lake the road follows the Maligne River, now a tumultuous greenish-white stream of considerable size. Almost ten miles south one catches the first exciting glimpse of the shining tops of the snow peaks surrounding Maligne Lake. On the latter, near the outlet to the river, stands Maligne Lake Chalet. Before the Chalet and extending in a south-easterly direction for seventeen miles, with a breadth varying from two hundred yards to two miles and a shore line of some fifty miles, lies Maligne Lake, the largest glacial-fed body of water in the Canadian Rockies.

The vista from the lower end of Maligne Lake makes up a charming alpine picture, but one must take the boat trip beyond the Narrows, nine miles from the chalet, where the upper part of the lake is revealed, to realize the full glory of this masterpiece, and to understand the praise it has drawn from all mountain lovers who have been fortunate enough to see it.

Beginning with Mount Samson (a jagged peak of ten thousand feet facing the Chalet on the left), the altitude of the peaks forming the Maligne group (Mounts Charlton, Unwin, Warren, Mary Vaux, and Maligne) gradually increases until, in Mount Brazeau, it reaches eleven thousand, three hundred and eighty feet.

The mountains rise precipitously from the lake and are heavily laden with snow and ice. At the south-west end of the lake, farthest from the Chalet, lies a snowfield of considerable size, and leading in a southerly direction towards the Brazeau River district, along the western base of Mount Brazeau, is a high, broad snow pass, affording easy access to this intensely interesting neighbourhood. The mountains in the Maligne Lake district are admirably suited to both ice and rock climbing, and many comparatively easy climbs can be successfully undertaken by the amateur.

The mountains, meadows, and flowers of the alplands will prove of great interest to botanist and naturalist alike. Sheep, goats, caribou, moose, and deer frequent these pastures. The Opal Hills, facing the Chalet on the east, are the home of the sheep and the goat, while the mountain sides overlooking the lake, particularly those about the southeast, are used extensively by the mountain goat as a summer pasture.

What to do at Maligne Lake

Ride or hike to Maligne Pass, to the top of the Opal Hills, or to the haunt of the caribou at the summit of Bald Mountain.

Take canoe, rowboat, or outboard motor-boat trips on the lake, also a scenic motor-boat trip to the upper end of Maligne Lake, 34 miles return.

Fish for speckled trout in Maligne Lake, Mona Lake, and Maligne River.

Arrangements can be made for summer skiing by applying to Fred Brewster's Rocky Mountain Camps Limited.

All-Inclusive MOTOR and BOAT Trips from Jasper Park Lodge to Maligne Lake and Return

One-day Trip. Leave Jasper Park Lodge at 8:00 a.m., motor to Medicine Lake, take motor-boat across the lake, and proceed by motor-car to Maligne Lake, arriving at 10:30 a.m. The return journey is over the same route, leaving Maligne Lake Chalet at 4:00 p.m., and arriving at Jasper Park Lodge at 6:30 p.m. This trip from The Lodge to the far end of Maligne Lake—100 miles return—includes transportation, luncheon and afternoon tea at Maligne Lake Chalet, and scenic motor-boat trip on Maligne Lake. Cost: \$24.00 per person.

Overnight Trip. Leave Jasper Park Lodge at 10:00 a.m., motor to Medicine Lake, take motor-boat across the lake, and proceed by motor-car to Maligne Lake, arriving at 12:30 p.m. The return journey is over the same route, leaving Maligne Lake Chalet the next afternoon at 1:30 p.m., and arriving at Jasper Park Lodge at 4:00 p.m. Cost of transportation, one night's accommodation, four meals at Maligne Lake Chalet, and scenic motor-boat trip on Maligne Lake: \$35.00 per person in canvas houses, and \$37.00 per person in the cabins.

Special two-night visit. Leave Jasper Park Lodge at 4:00 p.m., motor to Medicine Lake, take motor-boat across the lake, and proceed by motor-car to Maligne Lake, arriving at 6:30 p.m. One full day at Maligne Lake with morning scenic motor-boat trip. The return journey is over the same route, leaving Maligne Lake Chalet at 8:00 a.m., and arriving at Jasper Park Lodge at 10:30 a.m. Cost for transportation, two nights' accommodation, five meals at Maligne Lake Chalet, and scenic motor-boat trip on Maligne Lake: \$37.50 per person in canvas houses, and \$41.00 per person in the cabins.

Should a party wish to make the trip at any other than the regular times, an additional charge will be made.

Boats and Canoes at Lakes in Maligne District

Canoes, skiffs, dinghies, and motor-boats, at Maligne, Medicine, Beaver, Mona and Lorraine Lakes can be hired at the following rates:

Boat with trolling motor—\$15.00 per day; \$7.50 per half day. This rate includes the services of a Guide to operate the boat.

For fishing—canoes, skiffs, and dinghies, without motors: 50c. per hour (minimum charge \$1.50); \$3.00 per day, at Medicine and Beaver Lakes; \$1.75 per half day. \$3.50 per day at Maligne, Mona and Lorraine Lakes.

Arrangements made for fishing boats and Guides at local rates.

Round trip boat fare on Medicine Lake (eight miles return) \$2.50 per person.

Round-trip boat fare on Maligne Lake (34 miles return): \$6.00 per person.

MALIGNE RIVER ANGLERS' CLUB

Anglers visiting the Maligne area will have an opportunity, without additional expense, to qualify for membership in the Maligne River Anglers' Club, particulars of which can be obtained at "Fred Brewster's Rocky Mountain Camps", Jasper Park Lodge. An angler who catches a speckled brook trout weighing not less than a pound qualifies for membership in the Maligne River Anglers' Club and receives a bronze lapel button. The angler who catches the heaviest speckled brook trout receives a gold lapel button, emblematic of the championship of the Maligne River Anglers' Club. The angler taking the second heaviest trout receives a silver button.

SADDLE TRIPS—TRAIL TRIPS—GUIDE SERVICE

*Official Outfitters—Fred Brewster's Rocky Mountain Camps Limited
Office—Jasper Park Lodge*

Arrangements can be made at "Fred Brewster's Rocky Mountain Camps" in the Central Building, Jasper Park Lodge, or any Canadian National Railways office, for all scheduled and special short saddle trips, and for guide service.

Arrangements can also be made for hunting trips during September and October.

Every effort commensurate with trail conditions will be made to maintain scheduled times of departure and arrival.

It is very important that visitors who intend to hike or ride the trails bring with them suitable clothing, including riding or hiking boots, woollen stockings or socks, woollen jacket or sweater, heavy breeches, flannel or mackinaw shirt, slicker, gloves, and suitable hat or cap.

No responsibility will be assumed for the loss on the trail of valuables or personal equipment.

GUIDE SERVICE

The management recommends that no mountain, saddle, or hiking trip be made without the services of a guide; parties who make trips without one do so at their own risk. The cost of a mounted guide is \$6.00 per half day, and \$10.00 per day. One guide is required for a party numbering up to five persons; an extra one, for more than five persons. Guide charges are pro rata according to the number in the party.

The guides are fully qualified, widely experienced, and thoroughly dependable.

RATES FOR SADDLE HORSES

Note: For a horse or guide one day consists of not more than nine (9) hours and not more than twenty (20) miles.

Horses equipped with either Mexican stock-saddle or English riding-saddle: \$4.50 per half day, and \$6.50 per day. Mountain trips, \$7.00 per day. Special rate of \$35.00 per week for reserved horses.

SADDLE TRIPS

NOTE: Slickers are not provided by the Outfitter.

Saddle Trip No. 1: Sawdust Trail—The trail leads through pine and fir forests, by lake shore and river bank, skirts the golf course, and ascends to the bench below Signal Mountain offering from its different vantage points ever-changing vistas of the charming Athabaska Valley. Riding time, 3 hours.

Saddle Trip No. 2: Maligne Canyon—The route is over the back trails away from the motor roads and follows the Athabaska Trail, traversing the entire length of Maligne Canyon. Riding time, 3 hours.

Saddle Trip No. 3: Golf Course and Old Fort Point (Hudson's Bay Table Top)—The route skirts the greater part of the golf course, proceeds up the Buffalo Prairie Trail to the top of the ridge and out on to Old Fort Point. This trip affords a splendid view of the Athabaska Valley and mountains on both sides of the upper river. Distance, 7 miles return. Riding time, 2 hours.

Saddle Trip No. 4: Caledonia Lake—Fourteen miles return. A small lake lying on a rocky bench above the Miette River, Caledonia Lake is reached by following the Miette road to Cabin Creek Bridge. Here the trail branches off and follows the left bank of Cabin Creek. Riding time, 4½ hours.

Saddle Trip No. 5: Pyramid Lake—Sixteen miles return. This trail leads the rider through Jasper, ascends the hill to the north, crosses Cottonwood Creek Valley, and then passes along the ridge above Pyramid Lake. Riding time, 5 hours.

Saddle Trip No. 6: Buffalo Prairie-Wabasso Lake. Twenty miles return. An interesting trail winding through beautiful scenery. Excellent fishing in the lake waters. Riding time, 5 hours.

Saddle Trip No. 7: Maligne Lake and Sky Line Trail Trip—For those who enjoy riding at a high altitude, the return trip from Maligne Lake over the Sky Line Trail offers a new and exhilarating experience. **If snow conditions permit—this trip will be operated between July 10th and August 31st.**

First day—leave Jasper Park Lodge at 10:00 a.m., motor to Medicine Lake, take motor-boat across the lake and proceed by motor-car to Maligne Lake, arriving at 12.30 p.m.

Second day—rest at Maligne Lake Chalet and take scenic motor-boat trip to the upper end of Maligne Lake (34 miles return).

Third day—leave Maligne Lake Chalet at 9:00 a.m. with guide and saddle-horse, cross Maligne River via the saddle horse bridge, follow the Shovel Pass Trail over the Northeast shoulder of Bald Mountain to the Evelyn Creek ford and proceed up the long, easy slope to the summit of Little Shovel Pass at timber line. From the summit of Little Shovel Pass the rider gets a splendid view of the four miles of alpland, to be traversed before making the last climb to the summit of Big Shovel Pass (8,000 ft.). An easy descent across the shale slopes brings the rider to the overnight camp at Shovel Pass—a distance of 14 miles.

Fourth day—the route leads upward from Big Shovel Pass to the Skyline of the Maligne Range and for more than two miles maintains an altitude of eight thousand feet. The high altitude and peculiar location of the trail offers the rider in clear weather a magnificent view of the mountains in all directions. This is, beyond doubt, the most comprehensive panorama obtainable from a saddle, and is comparable to that of the Grand Canyon of Arizona. After a short stop for lunch in the basin at the rear of Tekarra Peak, the rider continues around the east and north base to the top of Signal Mountain. The descent from Signal Mountain to the Lodge is made over the regular Signal Mountain Trail.

This is a four-day trip. Cost, including boat trip on Maligne Lake and Canvas House accommodation at Maligne Lake Chalet, \$114.00 per person; for cabin accommodation, \$118.00 per person. Minimum, 4 persons.

Saddle Trip No. 8: Wabasso Lake and Skyline Trail Trip—Fishing and Scenic—

First day—leave Jasper Park Lodge at 8:30 a.m. with guide and saddle-horse, ride ten miles to Wabasso Lake, fish for native Rainbow trout approximately four hours, and ride upward into Shovel Pass Camp for overnight.

Second day—leave Shovel Pass Camp and ride upward to the Skyline of the Maligne Range. The location of the trail offers the rider a magnificent view of the mountains in all directions. A stop for lunch is made in the Tekarra Basin; the trail then continues around Signal Mountain and descends into the valley where a car takes the riders to Jasper Park Lodge.

This is a two-day trip. All-inclusive cost, \$60.00 per person. Minimum, 3 persons.

TONQUIN VALLEY

Among the many beauty spots in the Canadian Rockies, none is more outstanding than the Tonquin Valley and that splendid range of mountains which rises along the spiral ridge of the continent from Mount Fraser northward, on the western boundary of Jasper National Park.

Tonquin Valley lies verdant, wide and open, high up on the shoulders of the great ridge that forms the Divide at an elevation of 6,450 feet. Brilliant masses of wild flowers, the vivid greens of the coarse grass, and the dark velvety hue of pines, give the valley a smiling loveliness, which contrasts with and softens the unrelieved majesty of the black and jagged peaks. On every hand, too, are signs of wild life. Its waters are famous for splendid Rainbow trout fishing.

Near the southern end of the valley is a beautiful sheet of water three miles long and about a mile wide, divided by a rocky promontory into two parts, forming what are known as the Amethyst Lakes. Their waters are pale in color with amethyst shadows running from the sides, a color probably due to vegetation, accentuated when seen from a height, which has given them their names.

Forming a great arc from southwest to northwest, the Ramparts stretch along the western side of the valley without a sign of vegetation to relieve their rugged majesty. At all hours the Ramparts are impressive, but they are most splendid at sundown.

This beautiful valley is second to none in its interest to the angler, the alpinist, and the photographer.

The main trail to the Tonquin Valley is in from View Point, the latter being sixteen miles from Jasper on the Cavell motor road. The route is along the northern slopes of Mount Sorrow to Verdant Creek. Crossing the latter, it traverses the base of the northeast corner of Throne Mountain and, at a distance of some four miles from the highway, crosses the Astoria River. The trail then follows the northwestern bank of the Astoria for two and one-half miles before swinging to the right. After a very short climb to open country, it crosses the alplands to the Amethyst Lakes, a distance of three and one-half miles.

Transportation Schedule for Tonquin Valley Operates Every Third Day in July and August

Leave Jasper Park Lodge by motor-car and drive to View Point at the lower end of Cavell Lake, where guides, saddle-horses, and pack-horses are stationed to complete the trip. Commencing July 1st, ingoing trips leave Jasper Park Lodge 9:30 a.m. first day and arrive Tonquin Valley Camp at 4:00 p.m. same day; leave Tonquin Valley Camp 9:30 a.m. third day and arrive Jasper Park Lodge at 4:00 p.m., e.g., leave Jasper Park Lodge July 1st, 4th, 7th, etc., and leave Tonquin Valley Camp July 3rd, 6th, 9th, etc. Luncheon is taken on the trail. Cost, for transportation by motor-car and saddle-horse also luncheons on the trail: \$42.00 for the return trip. **Charges at Tonquin Valley Camp are Extra.**

(Slickers are not provided by the outfitter).

Distance from Jasper, 26 miles.

All-Inclusive Three-day Trip to Tonquin Valley

Cost for round-trip transportation and accommodation at Tonquin Valley Camp, \$63.00 per person.

Tonquin Valley Camp is open for Spring skiing during March, April and May. For full information write to "Fred Brewster's Rocky Mountain Camps Limited", Jasper, Alberta.

ACCOMMODATION AT CHALETS

These chalets are operated by the Official Outfitters, "Fred Brewster's Rocky Mountain Camps Limited". Reservations can be made direct or through the Manager of Jasper Park Lodge.

Maligne Lake Chalet, elevation 5,500 feet, situated on Maligne Lake at the outlet to Maligne River, comprises a central building 25' x 40', containing a living-room with big, open fireplace, a dining-room with a seating capacity of 30 persons, and a well-equipped kitchen. Along the front, and on one side, stretches a spacious, screened-in veranda from which visitors get a splendid view of the lake.

Sleeping accommodation at Maligne Lake Chalet is provided in a four-room cabin, individual cabins, and in heated canvas houses; accommodation for 30 persons.

The Canvas Houses have permanent wooden frames and floors, and 6 foot walls. Each is separately heated, and amply lighted. The furnishings are similar to those of the four-room cabin, and include bureau, two chairs, grass rug, bedside mats, washstand, and two comfortable single beds.

Complete bath and toilet facilities are provided in a separate building.

Comfortable beds and plain but appetizing meals, guarantee the trail rider, angler, and other visitors an enjoyable stay.

Shovel Pass Camp, elevation 6,800 feet, located in Shovel Pass basin at timber line, is of sound construction, and provides comfortable accommodation for eight persons. Alpland hiking, rock climbing, mountain game, and flora. From this camp the visitor gets an excellent view of the Athabaska and Tonquin Valleys, also of the Rampart Range including Mount Geikie, of the Whirlpool Valley as far as the Continental Divide, and of the Columbia Icefield far away to the south.

Tonquin Valley Camp, elevation 6,500 feet, situated on the Amethyst Lakes at the base of the Rampart Range, comprises a central log building containing dining-room and kitchen. Comfortable sleeping accommodation is provided in floored and heated canvas houses; each is furnished with two single beds, washstand, mirror, stove, etc.

Fishing boats can be rented for \$2.00 per half day, \$3.50 per day.

RATES AT CHALETS AND CAMPS

(American Plan—including meals)

Tonquin Valley Camp is open from July 1st to August 26th. Maligne Lake Chalet remains open from June 15th to September 15th, but no advance reservations accepted after September 1st since low water in some seasons prevents navigation on Medicine Lake after that date. Shovel Pass Camp is open from July 10th to August 31st. Provided sufficient notice is given, parties who wish to visit these camps before or after the regular season can make arrangements to do so.

	Per Day	Per Week
Tonquin Valley Camp.....	\$12.00	\$80.00
Shovel Pass Camp.....	8.00	

Maligne Lake Chalet:

<i>Cabin Room</i>	14.00	93.00
<i>Heated Canvas Houses</i>	12.00	80.00

Motor-boat service on Maligne Lake (34 miles return) \$6.00 per passenger.



Jasper has one of the world's really great Golf Courses!

With the artist's sketch in front of you, you can play all of the 21 holes (that's right) of the world-famous Jasper Park Lodge Golf Course. Herewith, are the holes, one by one, with yardages and par:

(1) First—395—Par 4. (2) Old Man—485—Par 5. (3) Signal Dip—425—Par 4. (4) Cavell—245—Par 3. (5) Miette—470—Par 5. (6) Whistlers—410—Par 4. (7) Colin's Clout—185—Par 3. (7A) Elks' Wallow—460—Par 5. (8) Tekarra's Cut—430—Par 4.

(8A) Bears' Den—395—Par 4. (9) Cleopatra—215—Par 3. (9A) The Brink—165—Par 3. (10) The Maze—495—Par 5. (11) Pyramid—395—Par 4. (12) Tete Jaune—175—Par 3. (13) Grande Allee—595—Par 5. (14) Lac Beauvert—385—Par 4. (15) The Bad Baby—150—Par 3. (16) The Bay—390—Par 4. (17) The Climber—375—Par 4. (18) Home—480—Par 4.

Par 71.....6,700 Yards

Jasper Park Lodge

OPEN JUNE 10th TO SEPTEMBER 15th, 1953

RATES: AMERICAN PLAN (Including Meals)

Subject to change without notice

Rooms without private bath

Though without private bath, each of these rooms has hot and cold running water; public baths and toilets are centrally located in each cabin.

		Per Day		
		Single	Double	
16-room cabins (single rooms only).....	Type J	\$14.50		Single bed
23-room cabin (single rooms, men only).....	" P	13.50		" "
10-room cabins—back rooms.....	" E	14.50	\$24.00	Twin beds
4-room cabins.....	" D	15.00	25.00	

Rooms with private tub bath

16-room cabins (single rooms only).....	"	J	16.50		Single bed
10-room cabins.....	"	G	18.00	30.00	Twin beds
10-room cabins.....	"	H	19.00	32.00	" "
4-room cabins.....	"	C	23.00	35.00	" "

Rooms with private shower bath

4-room cabins.....	" M	19.00	32.00	" "
4-room cabins.....	" N	19.00	32.00	" "

Rooms with private combination tub and shower bath

4-room cabin.....	" F	23.00	36.00	"	"
4-room cabins.....	" L	23.00	36.00	"	"
8-room cabin.....	" R	23.00	36.00	"	"

Private sitting-rooms in Type L and Type R cabins.....	\$7.00 per day
--	----------------

If the exclusive use of a 4-room cabin is desired by a party, the minimum charge will not be less than the regular rate for six adults.

Rooms with connecting bath

TYPE E cabins—

2	persons in 2 front rooms with connecting tub bath.....	\$36.00	} Twin beds
3	“ “ “ “ “ “ “ “	46.00	
4	“ “ “ “ “ “ “ “	56.00	

TYPE S cabins—

(Connecting rooms—one room has tub bath and the other has shower bath.)

2	persons in	2	rooms	41.00	} Twin beds
3	"	2	"	54.00	
4	"	2	"	66.00	

Rooms in the type S cabins, as well as front rooms in type E cabins, are sold only en-suite.

Suites and private cabins

One-suite cabins with tub bath—Type A

One or two persons.....	46.00	}Twin beds
Three persons.....	57.00	
Four persons.....	68.00	

Two-suite cabins with tub bath—Type B

Rates for each half of cabin

One or two persons.....	46.00	} Twin beds
Three persons.....	57.00	
Four persons.....	68.00	
One to four persons occupying entire Type B cabin.....	92.00	
Five " " " " " ".....	103.00	
Six " " " " " ".....	114.00	
Seven " " " " " ".....	125.00	
Eight " " " " " ".....	136.00	

AA Cabin

One to four persons (minimum).....	95.00
For fifth and sixth persons, each.....	15.00

Point Cabin

One to four persons (minimum).....	120.00	Bed equipment will be arranged to suit occupants
For each additional person from 5 to 8 inclusive.....	15.00	
Outlook Cabin		
One to four persons (minimum).....	135.00	
For each additional person from 5 to 8 inclusive.....	15.00	

Outlook Cabin

Half rate for children under seven years, unless they occupy a separate room (minimum \$8.00).

Rates for third person in room.

Adults—\$9.00 a day in rooms without private bath; \$10.00 a day in rooms with private bath.

NOTE:—Only a limited number of bedrooms are large enough for a third bed or cot.

Rates for Single Meals:—Breakfast, \$1.75. Luncheon, \$2.25. Dinner, \$4.00.

Afternoon Tea can be obtained in the Snackroom.

Bus Fare:—Between station and Lodge (4½ miles)—50c per person each way. This includes the free transfer of hand baggage; it does not include the transfer of baggage which has been checked on rail transportation, charges for which are given below under "Checked Baggage".

Checked Baggage:—(Between station and Lodge) Grips—30c per piece each way; Trunks—50c per piece each way.

WHAT TO WEAR

AT THE LODGE—Let your taste be your guide. Wear what you like, but you'll find sports and lounging clothes best for relaxation.



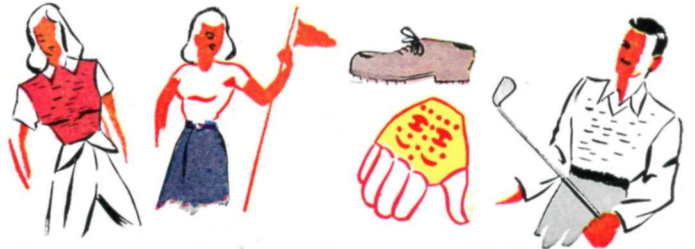
FOR MOTORING—A medium weight coat or wrap is always useful. So are sun glasses. Wear low-heeled shoes unless you just want to sit in the car when you reach a place worth exploring.



FOR RIDING—You can get along without boots or jodhpurs or other special riding togs. Breeches or "levis" are a good idea if you have them. Don't forget a sweater or a warm shirt.



FOR GOLF—What you wear on the course at home. Skirt or slacks, short-sleeved sweater; the proper shoes and gloves.



FOR DAY TIME—That depends on the weather and what you're doing. Suit yourself . . . Just be comfortable.



FOR EVENING—Fuss if you like, it's up to you. Many do—many don't. The only formality at Jasper Park Lodge is that men must wear coat or jacket with tie for dinner and during the evening in the Central Building. Come prepared for cool mountain evenings.



JASPER PARK LODGE—General Information

TIME—Jasper Park Lodge follows Mountain Standard Time

Distance from Station: 4½ miles. Bus Fare: 50c per person each way.

Altitude—3,470 feet.

Baggage—*Incoming Baggage*: In order to avoid delay, baggage should be checked from starting point direct to Jasper Park Lodge. Guests are requested to present their baggage checks to the Lodge Porter immediately on arrival at Jasper Station.

Outgoing Baggage: Guests who wish to check baggage should present rail tickets to the Head Porter two hours before the departure of their trains. Those who have only hand baggage to check should secure tags from the Head Porter.

Banks—The Imperial Bank of Canada maintains a branch office in Jasper.

Barber Shop, Shoe Shine, Parlour, and Beauty Parlour are located in the Central Building.

Bicycles—Available for rental.

Camera Supplies—Can be obtained at the Camera Shop.

Canadian Immigration Requirements—United States citizens do not require a passport to enter Canada, but it would be helpful for them to carry some proof of United States citizenship, such as a birth certificate or Voter's Registration Card.

Church Services—Church services for various denominations (Anglican, Roman Catholic, United Church) are held every Sunday in Jasper.

Customs—A Canadian Customs Officer is located at Jasper Park Lodge to facilitate the clearing of baggage of visitors from the United States.

Dancing—The Lodge orchestra provides dinner and evening concerts, also dance music from 9 to 12 o'clock every night except Sunday.

Electric Current—A.C. 110-115 volts, 60 cycles, single phase. Outlets for electric razors are obtainable at Front Office.

Express Service—Canadian National Express, represented at Jasper, provides express service for shipments to and from all points in Canada, United States, and Great Britain.

Film Developing Service—Films left at the Camera Shop before 9:00 a.m. will be returned the same day at 6:30 p.m.

Laundry—One-day service.

Library—A Lending Library is operated in connection with the Specialty Shop.

Meal Hours—Breakfast 7:00 a.m. to 9:30 a.m.
Luncheon 12:00 noon to 2:00 p.m.
Dinner 6:00 p.m. to 8:00 p.m.

Snackroom open from 10:00 a.m. to midnight.

Medical Service—The services of a physician are available at all times, while a graduate nurse is in constant attendance.

Money Orders—Money Orders are sold at the Front Office.

Motion Pictures—A motion picture entertainment is given in the ballroom from 7:30 to 8:30 o'clock every evening, except Sunday.

Novelty Shop—A complete line of souvenirs, post cards, coloured glasses, etc., can be purchased at the Novelty Shop, operated in connection with the CIGAR and NEWS STAND. See also "Specialty Shop".

Passenger Representative—A Canadian National Railways Passenger Representative is located at the Lodge. He will assist guests in all matters pertaining to tickets, train and boat reservations, etc.

Royal Mail Service—A Post Office is located in the Central Building and a Daily Royal Mail service is provided to and from Jasper Park Lodge. Mail should be addressed in care of Jasper Park Lodge Post Office, Alberta. Guests are requested to leave their forwarding address before departure.

Safety Deposit Boxes—Safety Deposit Boxes for the safe keeping of money and valuables are available to guests; apply at the Front Office. We cannot accept responsibility for money or articles not deposited therein.

Specialty Shop—An up-to-date Specialty Shop, located in the Central Building, carries a full line of imported woollen goods, handwoven articles, blankets, china, costume jewellery, ladies' sportswear, and an exclusive line of gentlemen's sportswear, sweaters, socks, ties, etc. See also "Novelty Shop".

Telegrams—Canadian National Telegraphs, connecting with the Western Union Telegraph Co., maintains an office at the Lodge. A complete, world-wide telegraph and cable service as well as a telegraphic money order service is available. From the leading exchanges of the world come regularly the latest market reports on stocks, bonds, and commodities.

Telephones—Long Distance Telephone connections can be made direct from all bedrooms.

Temperature—The average daytime temperature ranges from 65 to 75 degrees F. The nights are always cool.

U.S. Funds—Are accepted in payment of Hotel Accounts at the current rate of exchange.

Valet—Ladies' and gentlemen's valet service.

ALL-EXPENSE TOURS

All-Expense Tours, covering stays of one to four days at Jasper Park Lodge have been so planned that purchasers may cover the most ground in the least possible time and at the least expense. They include a selection of the most popular sightseeing motor drives (for complete description see page 28), **but do not include rail transportation to and from Jasper, or motor coach fares between Jasper and Columbia Icefield, Lake Louise, Banff, and Calgary.**

The costs for All-Expense tours are based on the **minimum rates** for hotel room and meals. If **superior type** of accommodation is desired, give full particulars to your nearest Canadian National Railways' Representative, who will obtain quotation and reservation from the Manager of Jasper Park Lodge.

All-Expense Tours are arranged for those arriving at, and departing from, Jasper Park Lodge as follows:

Tours	Arriving via	Departing via
11 to 14A	Trains 1, 2, 3, or 4.	Trains 1, 2, 3, 4, or Prince Rupert Gateway.
21 to 24A	Trains from Prince Rupert.	Trains 1, 2, 3, or 4.
31 to 34	Trains 1, 2, 3, or 4.	Motor coach to Lake Louise, Banff, etc.
41 to 44	Motor coach from Lake Louise, Banff, etc.	Trains 1, 2, 3, 4, or Prince Rupert Gateway.

TOURS NO. 11-14A INCLUSIVE

For the benefit of guests arriving at Jasper Park Lodge via trains 1, 2, 3 or 4 and departing via trains 1, 2, 3, 4, or Prince Rupert Gateway via train 195.

- TOUR No. 11 —One day visit**—Covers American Plan accommodation at Jasper Park Lodge, the 44-mile motor drive to Mount Edith Cavell, as well as bus transfer between the station and the Lodge. Open time for golf, tennis, horse-back riding, swimming, etc. Cost per person: without private bath, single, \$19.50, double \$17.00; with private bath, single \$21.50, double \$20.00.
- TOUR No. 12 —Two day visit**—Covers American Plan accommodation at Jasper Park Lodge, 80-mile drive to Miette Hot Springs, the General Drive, the 44-mile motor drive to Mount Edith Cavell, as well as bus transfer between the station and the Lodge. Open time for golf, tennis, horse-back riding, swimming, etc. Cost per person: without private bath, single \$44.00, double \$39.00; with private bath, single \$48.00, double \$45.00.
- TOUR No. 12A —Two day visit**—Covers American Plan accommodation at Jasper Park Lodge, General Drive, the famous Columbia Icefield Drive, the 44-mile motor drive to Mount Edith Cavell, as well as bus transfer between the station and the Lodge. Open time for golf, tennis, horse-back riding, swimming, etc. Cost per person: without private bath, single \$48.00, double \$43.00; with private bath, single \$52.00, double \$49.00.
- TOUR No. 13 —Three day visit**—Covers American Plan accommodation at Jasper Park Lodge, 80-mile drive to Miette Hot Springs, the famous Columbia Icefield Drive, the General Drive, as well as bus transfer between the station and the Lodge. Open time for golf, tennis, horse-back riding, swimming, etc. Cost per person: without private bath, single \$64.50, double \$57.00; with private bath, single \$70.50, double \$66.00.
- TOUR No. 13A —Three day visit**—Covers American Plan accommodation at Jasper Park Lodge, the General Drive, the famous Columbia Icefield Drive, 80-mile drive to Miette Hot Springs, the 44-mile motor drive to Mount Edith Cavell, as well as bus transfer between the station and the Lodge. Open time for golf, tennis, horse-back riding, swimming, etc. Cost per person: without private bath, single \$68.50, double \$61.00; with private bath, single \$74.50, double \$70.00.
- TOUR No. 14 —Four day visit**—Covers American Plan accommodation at Jasper Park Lodge, the General Drive, the 44-mile motor drive to Mount Edith Cavell, 80-mile drive to Miette Hot Springs, the famous Columbia Icefield Drive, as well as bus transfer between the station and the Lodge. Open time for golf, tennis, horse-back riding, swimming, etc. Cost per person: without private bath, single \$83.00, double \$73.00; with private bath, single \$91.00, double \$85.00.
- TOUR No. 14A —Four day visit**—Covers American Plan accommodation at Jasper Park Lodge, the General Drive, the famous Columbia Icefield Drive, the 44-mile motor drive to Mount Edith Cavell, 25-mile drive to Geikie, 80-mile drive to Miette Hot Springs, as well as bus transfer between the station and the Lodge. Open time for golf, tennis, horse-back riding, swimming, etc. Cost per person: without private bath, single \$86.00, double \$76.00; with private bath, single \$94.00, double \$88.00.

TOURS NO. 21-24A INCLUSIVE

For the benefit of guests arriving at Jasper Park Lodge via train from Prince Rupert, and departing via train for the East or West.

- TOUR No. 21** — **One and a half day visit**—Covers American Plan accommodation at Jasper Park Lodge, the General Drive, Mount Edith Cavell Drive, as well as bus transfer between the station and the Lodge. It also permits open time for golf, tennis, horse-back riding, swimming, etc. Cost per person: without private bath, single \$27.50, double \$25.00; with private bath, single \$29.50, double \$28.00.
- TOUR No. 21A** — **One and a half day visit**—Covers American Plan accommodation at Jasper Park Lodge, the General Drive, the famous Columbia Icefield Drive, the Mount Edith Cavell Drive, as well as bus transfer between the station and the Lodge. It also permits open time for golf, tennis, horse-back riding, swimming, etc. Cost per person: without private bath, single \$37.50, double \$35.00; with private bath, single \$39.50, double \$38.00.
- TOUR No. 22** — **Two and a half day visit**—Covers American Plan accommodation at Jasper Park Lodge, the General Drive, Miette Hot Springs Drive, the famous Columbia Icefield Drive, as well as bus transfer between the station and the Lodge. It also permits open time for golf, tennis, horse-back riding, swimming, etc. Cost per person: without private bath, single \$54.00, double \$49.00; with private bath, single \$58.00, double \$55.00.
- TOUR No. 22A** — **Two and a half day visit**—Covers American Plan accommodation at Jasper Park Lodge, the General Drive, the famous Columbia Icefield Drive, Miette Hot Springs Drive, the Geikie Twilight Drive, the Mount Edith Cavell Drive, as well as bus transfer between the station and the Lodge. It also permits open time for golf, tennis, horse-back riding, swimming, etc. Cost per person: without private bath, single \$61.00, double \$56.00; with private bath, single \$65.00, double \$62.00.
- TOUR No. 23** — **Three and a half day visit**—Covers American Plan accommodation at Jasper Park Lodge, the General Drive, Mount Edith Cavell Drive, Miette Hot Springs Drive, the famous Columbia Icefield Drive as well as bus transfer between station and the Lodge. It also permits open time for golf, tennis, horse-back riding, swimming, etc. Cost per person: without private bath, single \$72.50, double \$65.00; with private bath, single \$78.50, double \$74.00.
- TOUR No. 23A** — **Three and a half day visit**—Covers American Plan accommodation at Jasper Park Lodge, the famous Columbia Icefield Drive, the Miette Hot Springs Drive, the Mount Edith Cavell Drive, the Geikie Twilight Drive, the General Drive, as well as bus transfer between the station and the Lodge. It also permits open time for golf, tennis, horse-back riding, swimming, etc. Cost per person: without private bath, single \$75.50, double \$68.00; with private bath, single \$81.50, double \$77.00.
- TOUR No. 24** — **Four and a half day visit**—Covers American Plan accommodation at Jasper Park Lodge, the General Drive, Mount Edith Cavell Drive, Miette Hot Springs Drive, the famous Columbia Icefield Drive, as well as bus transfer between the station and the Lodge, with additional open time for golf, tennis, horse-back riding, swimming, etc. Cost per person: without private bath, single \$87.00, double \$77.00; with private bath, single \$95.00, double \$89.00.
- TOUR No. 24A** — **Four and a half day visit**—Covers American Plan accommodation at Jasper Park Lodge, the famous Columbia Icefield Drive, the Miette Hot Springs Drive, the Mount Edith Cavell Drive, the Geikie Twilight Drive, the General Drive, as well as bus transfer between the station and the Lodge. It also permits open time for golf, tennis, horse-back riding, swimming, etc. Cost per person: without private bath, single \$90.00, double \$80.00; with private bath, single \$98.00, double \$92.00.

TOURS NO. 31-34 INCLUSIVE

For the benefit of guests arriving at Jasper Park Lodge via train from the East or West, and departing via motor bus to Lake Louise, Banff, Calgary, etc.

- TOUR No. 31** — **One day visit**—Covers American Plan accommodation at Jasper Park Lodge, the "Twilight Drive" to Punch Bowl Falls, as well as transfer from the station to Lodge. It also permits open time for golf, tennis, horse-back riding, swimming, etc. Cost per person: without private bath, single \$16.25, double \$13.75; with private bath, single \$18.25, double \$16.75.
- TOUR No. 32** — **Two day visit**—Covers American Plan accommodation at Jasper Park Lodge, the General Drive, Mount Edith Cavell Drive, "Twilight Drive" to Punch Bowl Falls, as well as bus transfer from the station to Lodge. It also permits open time for golf, tennis, horse-back riding, swimming, etc. Cost per person: without private bath, single \$38.75, double \$33.75; with private bath, single \$42.75, double \$39.75.
- TOUR No. 33** — **Three day visit**—Covers American Plan accommodation at Jasper Park Lodge, the General Drive, Mount Edith Cavell Drive, Miette Hot Springs Drive, as well as bus transfer from the station to Lodge, with open time for golf, tennis, swimming, horse-back riding or motoring. Cost per person: without private bath, single \$55.75, double \$48.25; with private bath, single \$61.75, double \$57.25.
- TOUR No. 34** — **Four day visit**—Covers American Plan accommodation at Jasper Park Lodge, the General Drive, Mount Edith Cavell Drive, Miette Hot Springs Drive, as well as bus transfer from the station to Lodge, with additional open time for golf, tennis, boating, horse-back riding, swimming, etc. Cost per person: without private bath, single \$70.25, double \$60.25; with private bath, single \$78.25, double \$72.25.

TOURS NO. 41-44 INCLUSIVE

For the benefit of guests arriving at Jasper Park Lodge via motor bus from Lake Louise, Banff, or Calgary, and departing via trains for the East, the West, or Prince Rupert.

- TOUR No. 41** —One day visit—Covers American Plan accommodation at Jasper Park Lodge, the Mount Edith Cavell Drive, as well as bus transfer from the Lodge to station. It also permits open time for golf, tennis, horse-back riding, swimming, etc. Cost per person: without private bath, single \$19.00, double \$16.50; with private bath, single \$21.00, double \$19.50.
- TOUR No. 42** —Two day visit—Covers American Plan accommodation at Jasper Park Lodge, the General Drive, Mount Edith Cavell Drive, and the Miette Hot Springs Drive, as well as bus transfer from Lodge to station. It also permits open time for golf, tennis, horse-back riding, swimming, etc. Cost per person: without private bath, single \$43.50, double \$38.50; with private bath, single \$47.50, double \$44.50.
- TOUR No. 43** —Three day visit—Covers American Plan accommodation at Jasper Park Lodge, the General Drive, Mount Edith Cavell Drive, and Miette Hot Springs Drive, as well as bus transfer from Lodge to station, with open time for golf, tennis, swimming, horse-back riding, etc. Cost per person: without private bath, single \$58.00, double \$50.50; with private bath, single \$64.00, double \$59.50.
- TOUR No. 44** —Four day visit—Covers American Plan accommodation at Jasper Park Lodge, the General Drive, Mount Edith Cavell Drive, and Miette Hot Springs Drive, as well as bus transfer from Lodge to station, with additional open time for golf, tennis, swimming, horse-back riding, etc. Cost per person: without private bath, single \$72.50, double \$62.50; with private bath, single \$80.50, double \$74.50.

MOTOR COACH SERVICE OVER THE COLUMBIA ICEFIELD HIGHWAY BETWEEN JASPER and LAKE LOUISE, BANFF and CALGARY

Roomy, modern, sightseeing coaches, operated by Jasper Park Lodge, leave the Lodge daily from June 10th to September 15th, for the Columbia Icefield, where connection is made with services to Lake Louise, Banff and Calgary.

SCHEDULE

Between Jasper Park Lodge and Columbia Icefield

OPERATED BY JASPER PARK LODGE MOTOR TRANSPORTATION DEPARTMENT

Buses will call at Jasper Station to pick up passengers who are not guests at the Lodge.

Read Down		Read Up
9.00 a.m.	Lv. . . . Jasper Park Lodge Ar.	5.45 p.m.
9.15 a.m.	Lv. Jasper Ar.	5.30 p.m.
12.30 p.m.	Ar. . . . Columbia Icefield Lv.	2.30 p.m.

Between Columbia Icefield, Lake Louise, Banff and Calgary the service is provided by Rocky Mountain Tours and Transport Company and the Brewster Transport Company—Schedules are as follows:

ROCKY MOUNTAIN TOURS AND TRANSPORT COMPANY

2.00 p.m.	Lv. . . . Columbia Icefield Ar.	12.30 p.m.
6.00 p.m.	Ar. Lake Louise Lv.	8.30 a.m.
7.00 p.m.	Lv. Lake Louise Ar.	8.30 a.m.
8.30 p.m.	Ar. Banff Lv.	7.00 a.m.
8.00 a.m.	Lv. Banff Ar.	5.30 p.m.
11.00 a.m.	Ar. Calgary Lv.	2.30 p.m.

BREWSTER TRANSPORT COMPANY

2.30 p.m.	Lv. . . . Columbia Icefield Ar.	12.00 noon
6.00 p.m.	Ar. Lake Louise Lv.	8.30 a.m.
6.30 p.m.	Lv. Lake Louise Ar.	8.30 a.m.
8.00 p.m.	Ar. Banff Lv.	7.00 a.m.
8.30 p.m.	Lv. Banff Ar.	5.50 p.m.
11.00 p.m.	Ar. Calgary Lv.	3.00 p.m.

FARES

Between	Bus	Private Car
		1-5 Passengers 6 Passengers
Jasper Park Lodge or Jasper and Columbia Icefield One way	\$ 6.25	\$ 31.25 \$ 37.50
“ “ “ “ Round trip	10.00	50.00 60.00
Lake Louise One way	13.50	67.50 81.00
“ “ “ “ Round trip	22.50	112.50 135.00
Banff One way	18.00	90.00 108.00
“ “ “ “ Round trip	29.00	145.00 174.00
Calgary One way	20.95	130.00 158.00
“ “ “ “ Round trip	34.35	195.00 234.00

Children under 12 years, half fare.

The above fares do not include meals at any point en route.

Baggage Transfer via Motor Services—The foregoing fares include the free transfer of a reasonable quantity of hand baggage; they do not include the transfer of trunks or other heavy baggage, charges for which (between Jasper Park Lodge or Jasper, and the following points) are: Columbia Icefield—\$1.25 per piece each way, Lake Louise—\$3.00 per piece each way, Banff—\$4.00 per piece each way.

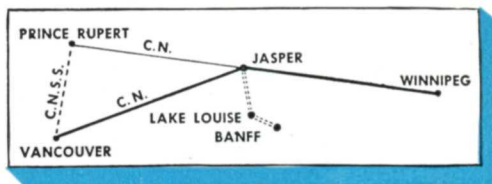
U.S. Government Revenue tax, when applicable on tickets or orders purchased in U.S., is additional to rates quoted above.

PASSENGERS MAY INCLUDE BANFF AND LAKE LOUISE IN THEIR ITINERARY ENROUTE TO, FROM OR THROUGH JASPER

In order that passengers visiting the Canadian Rockies may enjoy the scenic features of both Jasper National Park and Banff National Park, the Canadian National Railways have made arrangements whereby motor transportation between Jasper and Banff and/or Lake Louise over the famous Columbia Icefield Highway may be purchased when railway transportation is secured, thus enabling passengers to complete transportation arrangements (both rail and motor) for the entire trip at originating point.

The motor side trip over the Columbia Icefield Highway from Jasper to Lake Louise and Banff and return may be purchased in connection with your Canadian National ticket reading to or through Jasper.

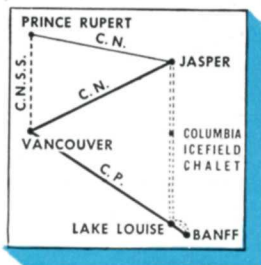
Or the motor trip may be incorporated in a circle tour of the principal resorts of the Canadian Rockies, as outlined below:



EASTBOUND FROM OR VIA VANCOUVER

Canadian National Railways to Jasper direct or via C.N.S.S. and Prince Rupert (at slight additional cost to cover meals and berth on steamer)—motor transport over Columbia Icefield Highway to Banff or Lake Louise, thence returning via Canadian Pacific Railway to Vancouver, permitting stopovers as desired enroute.

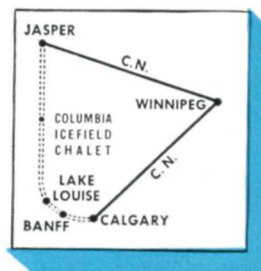
This trip is also available in the opposite direction.



WESTBOUND FROM OR VIA WINNIPEG

Canadian National Railways to Jasper—motor transport over Columbia Icefield Highway to Calgary—thence Canadian National Railways to Winnipeg.

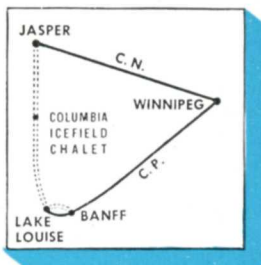
This trip is also available in the opposite direction.



WESTBOUND FROM OR VIA WINNIPEG

Canadian National Railways to Jasper—motor transport over Columbia Icefield Highway to Lake Louise or Banff—thence Canadian Pacific Railway to Winnipeg.

This trip is also available in the opposite direction.



TO AND FROM THE PACIFIC COAST VIA JASPER, BANFF, LAKE LOUISE

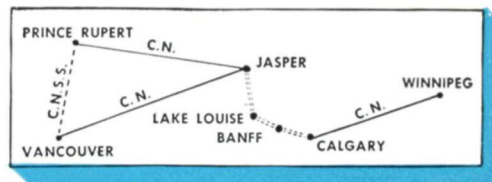
Passengers holding tickets to or from the Pacific Coast via Canadian National Railways may include the three mountain resorts of Jasper, Banff and Lake Louise, as follows:

Eastbound From or Via Vancouver

Canadian National Railways to Jasper direct or via C.N.S.S. and Prince Rupert—at slight additional cost to cover meals and berth on steamer—motor transport to Calgary via Lake Louise and Banff, thence Canadian National Railways.

Westbound From or Via Winnipeg

Canadian National Railways to Calgary — motor transport to Jasper via Banff and Lake Louise — thence Canadian National Railways to Vancouver direct, or via Prince Rupert and C.N.S.S. (at slight additional cost to cover meals and berth on steamer).



BAGGAGE

HAND BAGGAGE will be carried free of charge on motor services between Jasper Park Lodge or Jasper, and Lake Louise, Banff or Calgary. TRUNKS and OTHER BAGGAGE will be checked by rail to the extent covered by rail transportation held by passengers. TRUNKS AND OTHER HEAVY BAGGAGE will be checked via truck service at regular tariff rates.

NOTE:—Alternative routes via Prince Rupert will be dependent on the operation of C.N.S.S. service between Prince Rupert and Vancouver.

ACCOMMODATIONS IN JASPER NATIONAL PARK

ASTORIA HOTEL, Jasper

Open throughout the year. Rates: European Plan from \$3.00 per day, single, and up, from \$4.00 per day double and up. Rooms with and without bath. Lunch counter and dining room service.

ATHABASCA HOTEL, Jasper

Open throughout the year. Rooms with and without bath. Rates: European Plan, from \$3.50 per day, single, and up; from \$5.00 per day, double, and up. Dining room service.

BECKER'S BUNGALOWS

Four miles from Jasper on the Columbia Icefield Highway. Open May 15 to Oct. 15. Accommodation 34 Cabins. Rates: 2-4 persons, \$6.00 to \$12.50 per day, each additional person \$1.50 per day. Dining room.

CIRCLE M RANCH, Entrance, Alta.

Thirty-four miles east of Jasper on Jasper-Edmonton Highway. Accommodation eight persons. Rates: (American Plan) \$70.00 per week; 4 persons \$60.00 per week; 8 persons \$50.00 per week. Rates include horses and services of a guide.

COLUMBIA ICEFIELD CHALET

Open June 15 to Sept. 15. Rates: European Plan, from \$3.50 per day, single; from \$5.50 per day, double. Located near the foot of the Athabasca Glacier, facing a panorama of mountains and glaciers, this is an ideal stopover point on the Columbia Icefield Highway for foot or snowmobile over the Glacier.

JASPER PARK LODGE (American Plan)

See page 34 for rates and accommodation.

KIEFER'S ALPINE VILLAGE

One mile from Jasper on the Columbia Icefield Highway. Accommodation 16 Cabins. Open May 15 to Oct. 1. Rates: \$6.00 and up for 2 persons.

LAKE EDITH CAMP

(Operated by the Edmonton Y.M.C.A.)
Five miles east from Jasper on the shore of Lake Edith. Transfer service available from C.N.R. Station to Camp. Open to adults and families from June 15th to September 1st. Rates: American Plan, per person per day, Cottage rooms \$7.00; Chalet rooms \$6.50; Tent rooms \$5.75. Children 6 to 12 years \$3.00 per day. European Plan available. Special rates for groups of 15 or more. Reduced rates after August 1st to families. Accommodation for 75 persons.

MALIGNE LAKE CHALET

(Operated by Fred Brewster's Rocky Mountain Camps Ltd.)

Daily trips by car and motor boat.
Thirty-two miles from Jasper, on the lake shore at the outlet to Maligne River. Open June 15 to Sept. 15, also overnight accommodation. Rates: per person, American Plan, log cabin room, \$14.00 per day; \$93.00 per week. Heated canvas houses, \$12.00 per day; \$80.00 per week.

MIETTE HOT SPRINGS BUNGALOWS

At Miette Hot Springs. Open May 24 to Sept. 15. Ten Deluxe modern type cabins, 2-6 persons \$7.50 to \$12.50 per cabin. Ten Tent Cabins, 2 persons, \$3.50. Lunch counter and dining room service.

PINE BUNGALOW CABINS

One mile east of Jasper. Open May 24 to Sept. 20. Accommodation: 50 Cabins. Rates: \$5.00 per cabin for 2 persons and up, with or without house-keeping facilities.

PYRAMID HOTEL, Jasper

Open throughout the year. Rooms without bath. Rates: European Plan, \$2.50 and up.

PYRAMID PINES CHALET

On the shores of Pyramid Lake, 3½ miles from Jasper. Accommodation 20 persons. Rates: American Plan, \$6.00 per day.

RAINBOW LODGE, Maligne Lake

Thirty-two miles from Jasper. Summer season only. Accommodation rate: \$9.00 to \$13.00 per day, American Plan. All inclusive daily trips Jasper to Maligne Lake and return \$22.00 per person, Medicine Lake to Maligne Lake and return \$17.00 per person.

ROCHE BONHOMME BUNGALOWS

On northern outskirts of Jasper town. Open April 1 to Oct. 31. Rates: Single \$6.00 and up; Double \$8.00 and up.

SHOVEL PASS CAMP

(Operated by Fred Brewster's Rocky Mountain Camps Ltd.)

Accommodation 8 persons. Floored framed tents. Rates: per person, American Plan, \$8.00 per day.

SUNWAPTA FALLS BUNGALOW CAMP

Thirty-four miles from Jasper on Columbia Icefield Highway. Accommodation 50 persons. Open June 1 to Sept. 30. Rates: for 2 persons, \$4.00 per day and up; for 4 persons, \$6.50 per day and up. Dining room service and coffee bar.

TEKARRA LODGE

One half-mile from Jasper on the Columbia Icefield Highway. 42 fully modern cabins. Rates: \$8.00 a day for 2 persons and up. Chalet rooms: for 1 person, \$4.00; \$6.00 and \$8.00 for 2 persons. Open May 15th to September 30th. Dining Room.

TONQUIN VALLEY CAMP

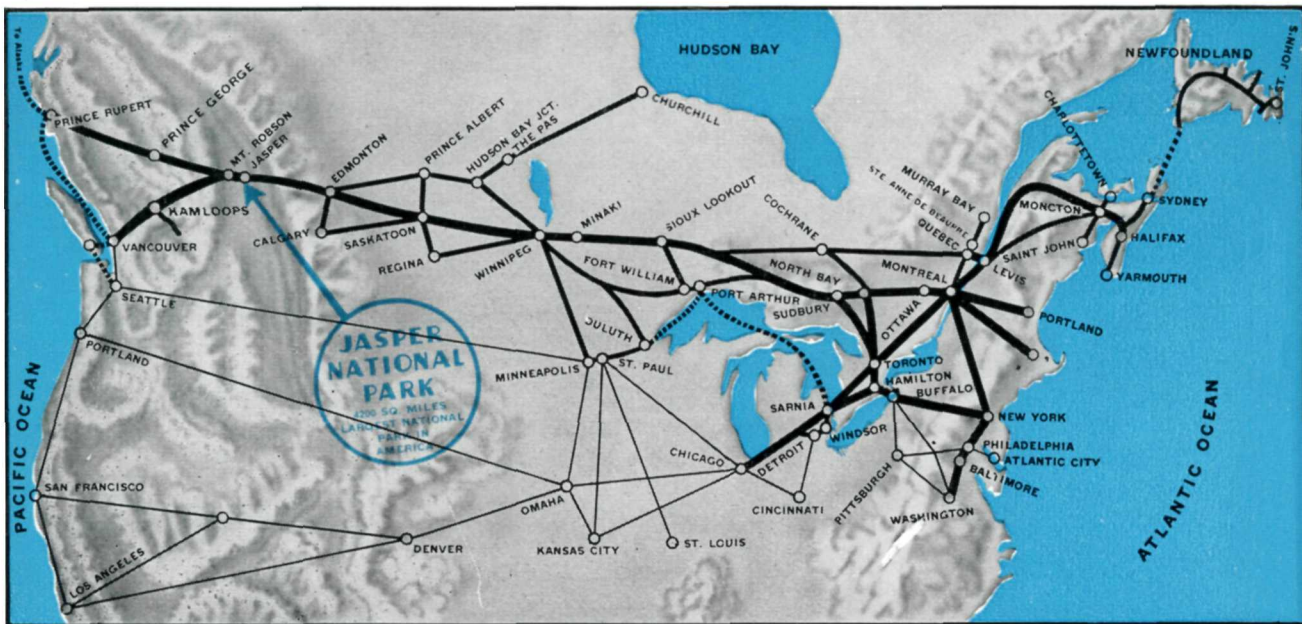
(Operated by Fred Brewster's Rocky Mountain Camps Ltd.)

On the shore of Amethyst Lakes, 20 miles from Jasper by motor-car and ten miles by saddle-horse. Open July 1 to Aug. 31. Rates: per person, American Plan, \$12.00 per day, \$80.00 per week.

WELLS BUNGALOWS, ATHABASCA FALLS

20 miles from Jasper on Columbia Icefield Highway. Eleven log cabins and 3 tent cabins. Accommodation 46. Tent cabin rates: \$3.00 per day for 2 persons. Log cabins: \$5.00 per day for 2 persons, \$7.00 per day for 4 persons.

NOTE:—The Canadian National Railways, in furnishing the above list of rates and other information, assumes no responsibility as to its accuracy.



Map showing principal Canadian National lines and routes from important Canadian and United States centres to JASPER NATIONAL PARK in the Canadian Rockies. Round trip excursion tickets are on sale to Jasper, Alta. In addition, one way, also round trip tickets reading to destinations beyond Jasper are valid for stop-over at Jasper within limit.

CANADIAN NATIONAL RAILWAYS

TICKET OFFICES IN CANADA AND UNITED STATES

Belleville, Ont.	346 1/2 Front St.
Boston 16, Mass.	497 Boylston St.
Brantford, Ont.	153 Colborne St.
Brockville, Ont.	Cor. King and East Market Sts.
Buffalo 2, N.Y.	13 West Genesee.
Calgary, Alta.	212 Eighth Ave.
Charlottetown, P.E.I.	C.N. Rys. Station
Chicago 3, Ill.	103 West Adams St.
Cincinnati 2, Ohio	206 Dixie Terminal Bldg.
Cornwall, Ont.	11 Second St. East
Detroit 26, Mich.	1239 Washington Blvd.
Edmonton, Alta.	Cor. Jasper Ave. & 100th St.
Flint 3, Mich.	106 E. Kearsley St.
Fredericton, N.B.	580 Queen St.
Guelph, Ont.	67 Wyndham St.
Halifax, N.S.	505-507 Barrington St.
Hamilton, Ont.	7 James St. N.
Kansas City 6, Mo.	101 West Eleventh St.
Kingston, Ont.	377 Princess St.
Kitchener, Ont.	19 King St. West
London, Ont.	430 Richmond St.
Los Angeles 17, Cal.	607 S. Grand Ave.
Milwaukee 3, Wis.	Room 502, 231 W. Wisconsin Ave.
Minneapolis 2, Minn.	1040 Rand Tower
	527 Marquette Ave.
Moncton, N.B.	C.N. Rys. Station
Montreal 1, Que.	384 St. James St. W.
New York 20, N.Y.	630 Fifth Ave.
North Bay, Ont.	203 Main St. West

Oshawa, Ont.	3 King St. West
Ottawa, Ont.	Cor. Sparks & Metcalfe Sts.
Peterboro, Ont.	324 George St.
Philadelphia 7, Pa.	Suite 1142 Lincoln Liberty Bldg., Broad and Chestnut Sts.
Pittsburgh 22, Pa.	355 Fifth Ave.
Portland 3, Me.	G.T. Railway Station
Prince Rupert, B.C.	528 Third Ave. West
Quebec, Que.	10 Ste. Anne St.
Regina, Sask.	Union Station
St. Catharines, Ont.	13 Queen St.
Saint John, N.B.	49 King St.
St. John's, Nfld.	C.N.R. Station
St. Louis 2, Mo.	314 North Broadway
San Francisco, Cal.	502 Shreve Bldg., 210 Post St.
Saskatoon, Sask.	C.N. Rys. Station
Seattle 1, Wash.	214 Vance Bldg., Third Ave. & Union St.
Sherbrooke, Que.	23 Wellington St. North
Sudbury, Ont.	41 Durham St. South
Toronto 1, Ont.	6 King St. W.
Vancouver, B.C.	527 Granville St., C.N. Rys. Travel Information Bureau, Hotel Vancouver
Victoria, B.C.	Cor. Gov't and Fort Sts.
Washington 5, D.C.	922 Fifteenth Street N.W.
Windsor, Ont.	364 Ouellette Ave.
Winnipeg, Man.	Main St. and Portage Ave.
Woodstock, Ont.	414 Dundas St.

EUROPEAN REPRESENTATIVES

London, S.W. 1, Eng.	17-19 Cockspur St.
London, E.C. 3, Eng.	95 Leadenhall St.
Liverpool, Eng.	Cunard Bldg., Water St.
Glasgow, C. 2, Scotland	9 Bothwell St.
Paris, France	1 Rue Scribe
Antwerp, Belgium	9 Koolkaal

AUSTRALIA AND NEW ZEALAND REPRESENTATIVES

Sydney, Australia	"Scottish House," 19 Bridge St. (P.O. Box 2606EE)
Melbourne, Australia	360 Collins St.
Wellington, New Zealand	Featherston Chambers

MAP OF JASPER NATIONAL PARK ALBERTA

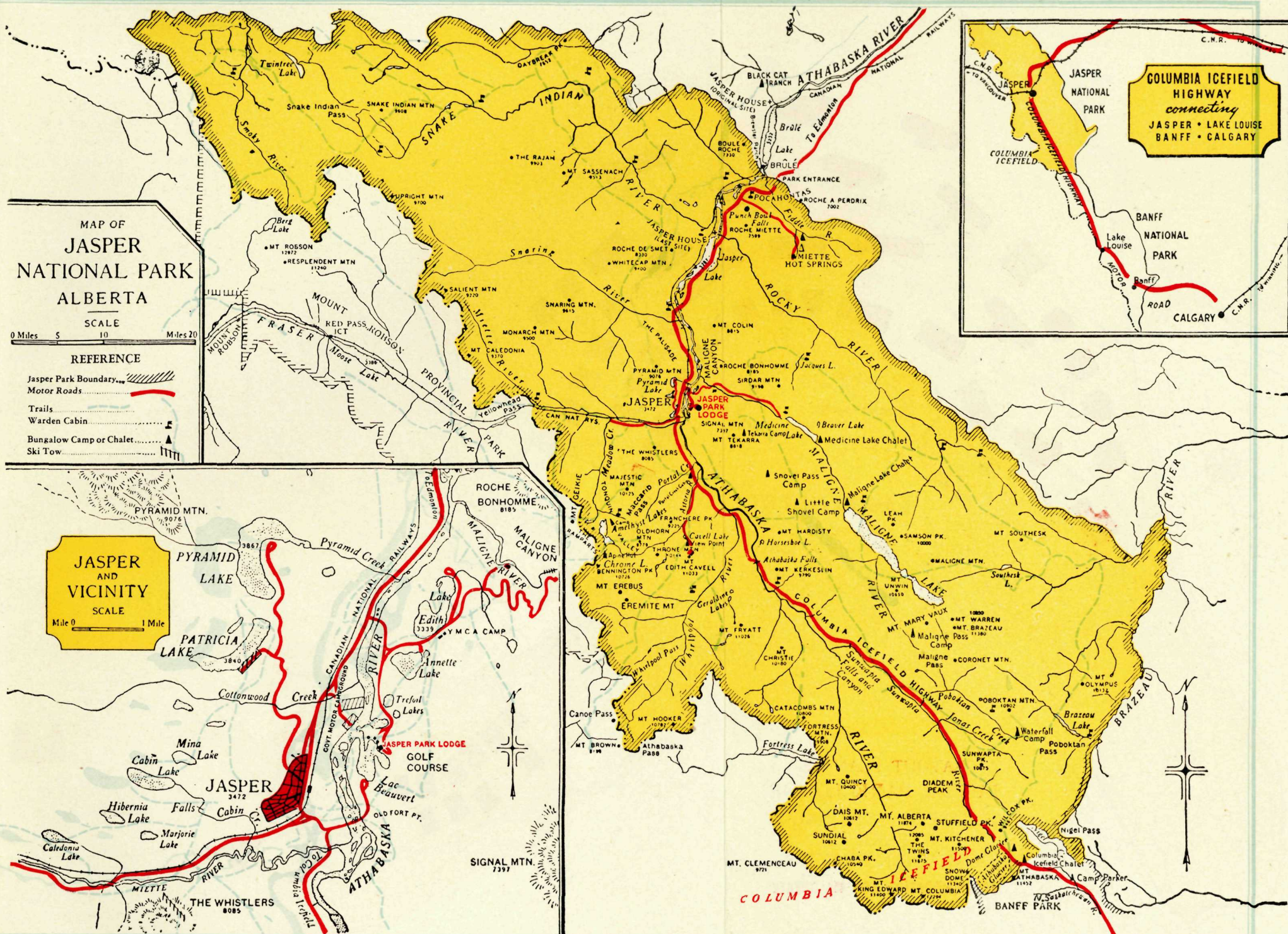
SCALE
0 Miles 5 10 Miles 20

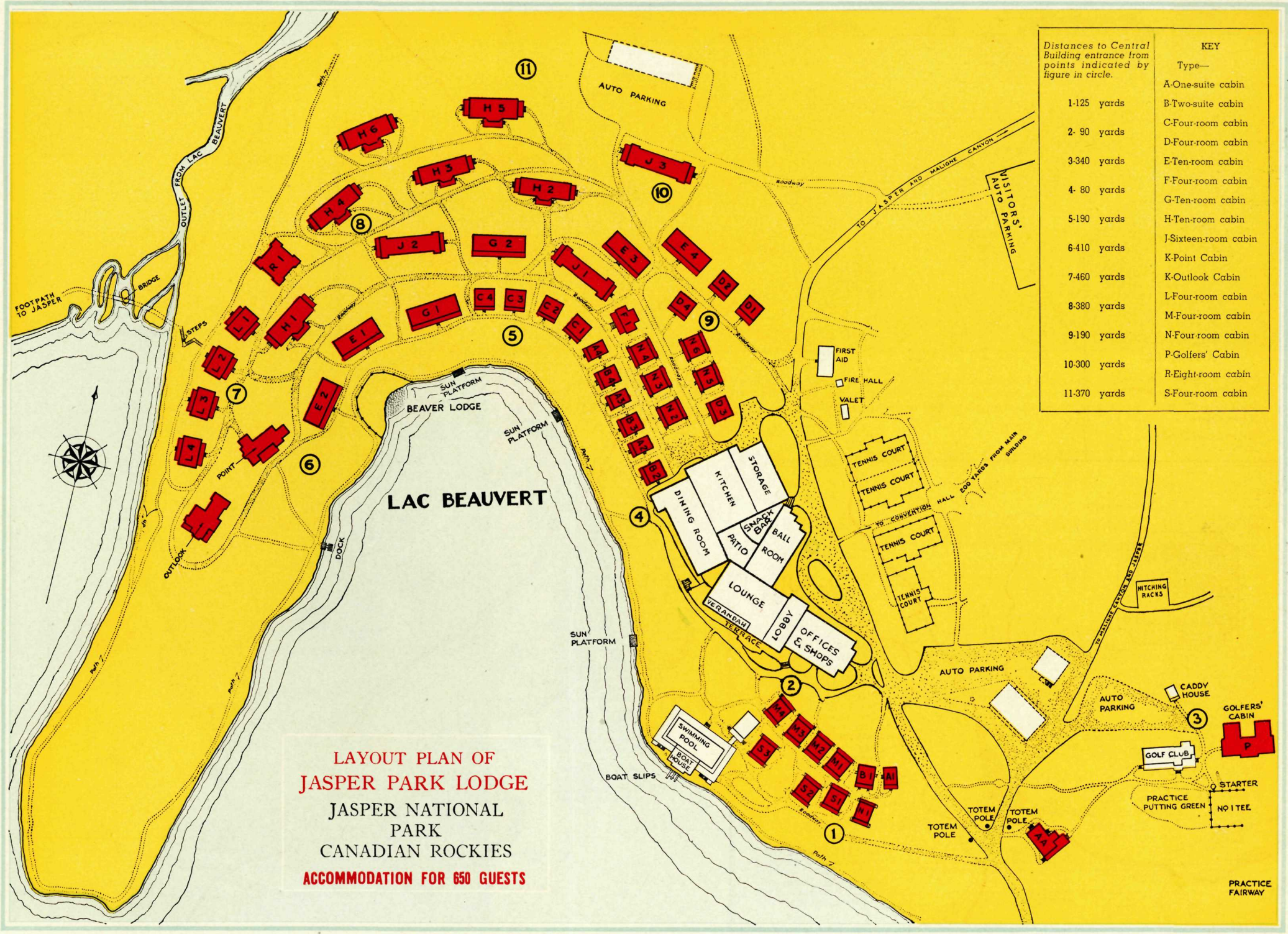
REFERENCE

- Jasper Park Boundary
- Motor Roads
- Trails
- Warden Cabin
- Bungalow Camp or Chalet
- Ski Tow

JASPER AND VICINITY

SCALE
Mile 0 1 Mile





**LAYOUT PLAN OF
JASPER PARK LODGE
JASPER NATIONAL
PARK
CANADIAN ROCKIES
ACCOMMODATION FOR 650 GUESTS**

Distances to Central Building entrance from points indicated by figure in circle.		KEY	
		Type—	
1-125 yards		A-One-suite cabin	
2-90 yards		B-Two-suite cabin	
3-340 yards		C-Four-room cabin	
4-80 yards		D-Four-room cabin	
5-190 yards		E-Ten-room cabin	
6-410 yards		F-Four-room cabin	
7-460 yards		G-Ten-room cabin	
8-380 yards		H-Ten-room cabin	
9-190 yards		J-Sixteen-room cabin	
10-300 yards		K-Point Cabin	
11-370 yards		L-Four-room cabin	
		M-Four-room cabin	
		N-Four room cabin	
		P-Golfers' Cabin	
		R-Eight-room cabin	
		S-Four-room cabin	

PRACTICE FAIRWAY

TRAVEL IN STYLE ON

The Continental Limited



The Canadian National, largest railway system in North America, is the only one serving all the ten provinces of Canada. Its lines run all the way from St. John's, Newfoundland, to Vancouver and Prince Rupert on the Pacific, and into 12 of the United States. Its famous trains include "The International Limited", operating between Chicago, Toronto and Montreal, and "The Continental Limited", which runs between Montreal, Toronto and Vancouver, by way of Winnipeg, Saskatoon and Edmonton. It is your Jasper train, for Jasper is on the main line of the C.N.R. Its equipment is the last word in convenience and comfort, whether it be in sleeping car, lounge or dining car. Canadian National standards in food and service are high, too. May we have the pleasure of serving you?



Jasper



**NATIONAL PARK
CANADIAN ROCKIES**

