

Study on the Establishment of a Marine Protected Area around the Îles de la Madeleine



March 2013

Scientific Component 2012-2014

Led by the University of Quebec at Rimouski (UQAR)

UQAR



Study undertaken for



Parks
Canada

Parcs
Canada

Développement durable,
Environnement,
Faune et Parcs

Québec

Introduction

WHY ARE WE HERE?

CONTEXT – UQAR's role

STUDY ON THE ESTABLISHMENT OF A POTENTIAL MARINE
PROTECTED AREA IN THE ÎLES DE LA MADELEINE

STUDY NOW AT MIDWAY POINT → DISCUSSION WITH LOCAL
STAKEHOLDERS

- Interim report on work in progress
- Discuss the approach and the preliminary results
- Discuss the guidelines for the continuation of the study

KNOWLEDGE SHARING ACTIVITY – NOT A PUBLIC CONSULTATION

Background

CONTEXT OF THE STUDY

- 2011** **Announcement of federal-provincial accord (MDDEFP-Parks Canada) for a study on the establishment of a marine protected area (MPA) around the Îles de la Madeleine**
- 2012** **Contract assigned to UQAR, initiation of study and creation of consultative committee**

Administrative Structure of Study



UQAR's Mandate

What UQAR will do:

- Carry out a **characterization** of the natural, social, economic and cultural elements, *using existing data*;
- Evaluate the **environmental**, **social** and **economic** issues of the geographic area concerned, with a view to the *potential* creation of an MPA;
- Propose **protection** and **development scenarios**.

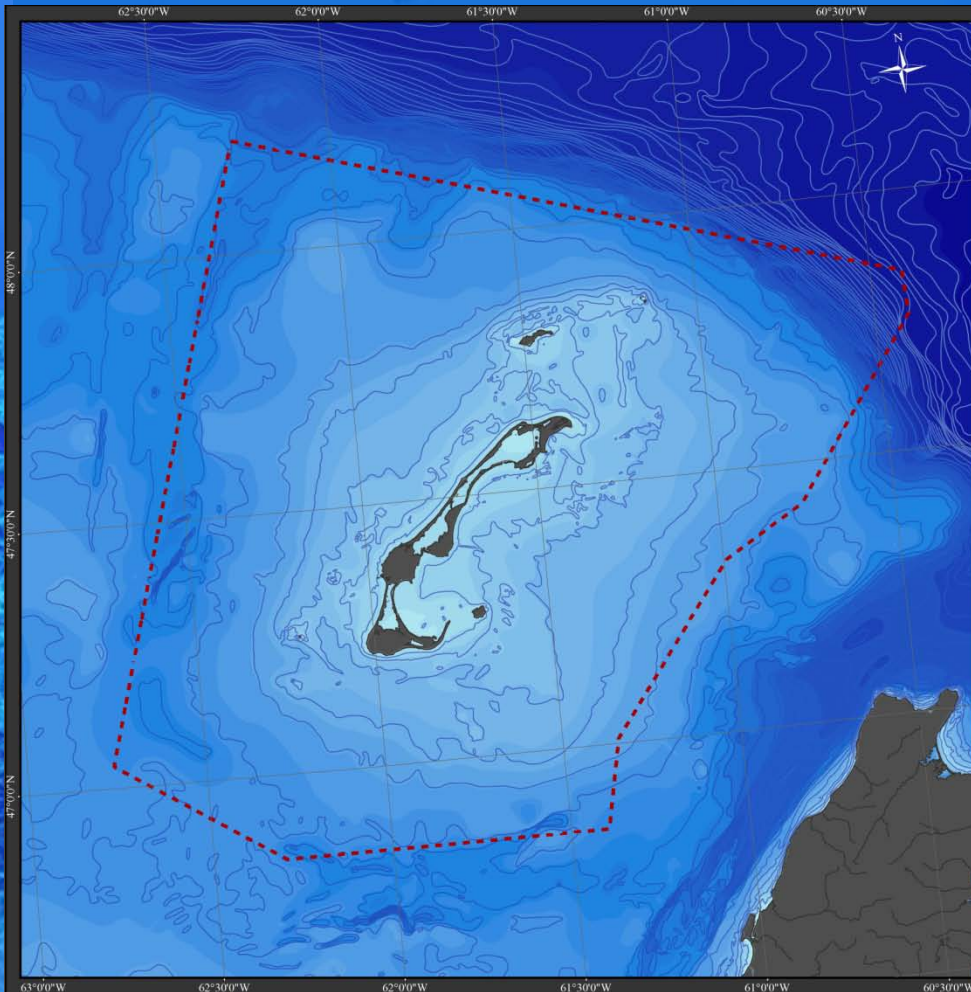
During the process:

- Survey the community's **expectations** and **perceptions**;
- Harness **local expertise**.

What UQAR will not do:

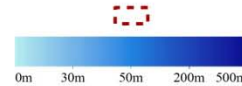
- Recommend the siting of an MPA
- Hold public consultations on the creation of an MPA
- Recommend management and governance approaches

Geographic Extent of the Study Area



Study regarding a Marine Protected Area around the Îles-de-la-Madeleine

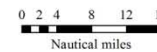
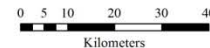
Geographic range of the territory under study



Source: ESRI Base Data, MPO, SIGHAP

Geographic projection: Québec Lambert NAD83

Author: David Beauchesne for the UNESCO chair on integrated analysis of marine systems



1:700,000



December 21st 2012



Study undertaken by a multidisciplinary team

UQAR

Philippe Archambault (Professor – *marine ecology*)

David Beauchesne (Researcher – *spatial analyses / coordination*)

Jean-Claude Brêthes (Professor – *oceanography / fisheries - coordination*)

Anne-Sophie Devanne (Researcher – *sociology*)

Ramaëlle Duquette (Master's student – *political and social sciences*)

Cindy Grant (Researcher – *ecology*)

Danièle Houde (Master's student – *sociology*)

Stéphanie Labbé-Giguère (Master's student – *oceanography*)

Nathalie Lewis (Professor – *sociology*)

Bruno Urli (Professor – *management science*)

CERMIM

Guglielmo Tita (director of CERMIM)

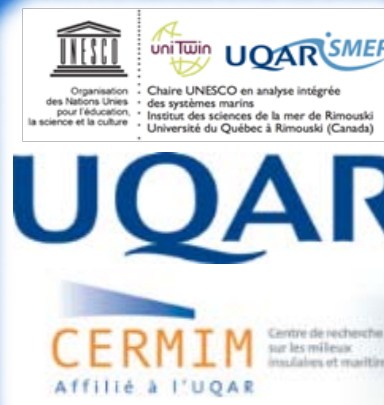
Government partners

MDDEFP

Rodolph Balej

PARKS CANADA

Luc Miousse



Guiding Principles of the Scientific Component

- i. Work in **co-operation** with local stakeholders;
- ii. Ensure **transparency**;
- iii. Use the **best available data** and **rigorous** and **objective** scientific methods;
- iv. Explicitly examine the **social**, **economic** and **cultural** aspects;
- v. Respect existing **authorities** and **jurisdictions**;
- vi. Take into account **existing** conservation initiatives;
- vii. Apply **the precautionary approach**;
- viii. Adopt an **integrative, ecosystem-based** approach.



Stages in Overall Study

2012

2013

2014

Inform and share with organizations and the public

Involve the consultative committee at different stages

Analyze the management and governance arrangements

Consultations

Prepare a
portrait of the
region

Identify the
areas of
interest and
the issues

Develop
conservation
and
presentation
scenarios

Decision on the
opportunity for
the governments
to create an MPA

UQAR

Portrait of the Îles de la Madeleine

Ecology

Biotic



Abiotic



Natural resources

Fisheries



Mining and energy



Uses and social, economic and cultural situation

Human activities



Regional identity



Issues

Goals and objectives

Identification of areas of interest

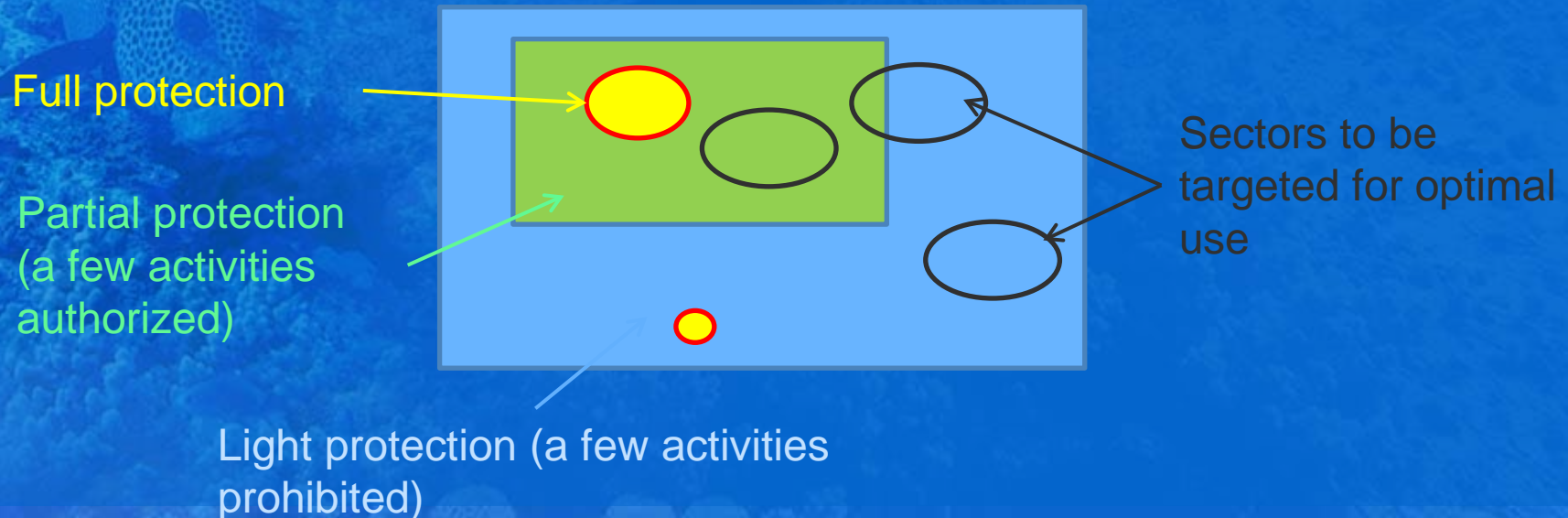
Scenarios

Identification of Scenarios

A marine protected area:

“A clearly defined geographical space **recognized, dedicated and managed**, through legal or other effective means, to achieve the long-term **conservation of nature** with associated **ecosystem services** and **cultural values**.” (Source : IUCN)

⇒ An MPA cannot be “locked away.”



2012							2013												2014	
June	July	Aug	Sept	Oct	Nov	Dec	Jan	Feb	Mar	April	May	June	Jul	Aug	Sept	Oct	Nov	Dec	Jan	Feb
1. Identify and involve ocean users																				
2. Identify goals and objectives																				
3. Compile data																				
4. Establish conservation targets																				
5. Include existing protected sectors																				
6. Propose areas of interest and MPA scenarios																				

Knowledge Sharing Activity



Objectives of the Activity

- Promote the involvement of **island stakeholders**;
- Propose and discuss the **general conservation objectives** that will **guide** the remaining work;
- Present an interim report on the work:
 - Overview of currently **available data**;
 - Consult Magdalen Islands stakeholders to ensure the available data are **valid** and to **add to** them;
- Taking into account the **general conservation objectives**, call on island stakeholders to assist in identifying ecological, economic and social areas of interest, in connection with the themes addressed.

Expected Results

- i. Make sure that the study reflects **local perceptions** and harness the **wealth of expertise** held by local stakeholders;
- ii. Familiarize local stakeholders with the **approach** used by UQAR
- iii. Encourage **a significant involvement** of local stakeholders;
- iv. Promote the **exchange of views** between local stakeholders from **different activity sectors**.

Activity Schedule

Day 1

Introduction to the study carried out by UQAR



General conservation objectives



Day 2

Marine ecology and the natural environment



Coastal and marine resources and uses



Thursday, March 7, 2013

7:45 Welcoming of participants

8:30 Opening remarks

8:45 Presentation of study

9:15 Scientific approach

9:45 Break

10:00 A marine area with human dimensions

11:00 Open discussion

11:30 Guidance on the general conservation objectives

11:40

12:00 Lunch

THEME 1 – GENERAL CONSERVATION OBJECTIVES

13:00 Schedule

13:15 Workshop 1

14:15 Break

14:35 Proposed conservation objectives

14:50 Workshop 2

16:00 PLENARY

Friday, March 8, 2013

7:45 Welcoming of participants

8:30 Schedule for the day

THEME 2 – MARINE ECOLOGY AND THE NATURAL ENVIRONMENT

8:45 Preliminary portrait of the ecology and the natural environment

9:25 Workshop 3

10:25 Break

10:40 Workshop 4

12:00 Lunch

THEME 3 – COASTAL AND MARINE RESOURCES AND USES

13:00 Preliminary portrait of coastal and marine resources and uses

13:40 Workshop 5

14:40 Break

14:55 Workshop 6

16:00 PLENARY AND CLOSING REMARKS

Study on the Establishment of a Marine Protected Area around the Îles de la Madeleine



Thank you