

RIDING MOUNTAIN NATIONAL PARK

Riding Mountain National Park is usually described as one of Canada's prairie playgrounds. Situated in the midwestern part of Manitoba, approximately 125 miles north of the boundary between Canada and the United States, the park occupies the broad undulating plateau that forms the summit of Riding Mountain—one of the highest points of the Manitoba escarpment.

To the natural attractiveness of this delightful area of 1,148 square miles have been added many recreational facilities. It is a summer resort only, the tourist season extending from May 1 to October 31. A picturesque townsite has been developed at Wasagaming on the southern shore of Clear Lake where for more than a mile stretches a safe, sandy beach for bathing and swimming. The office of the Park Superintendent and the Government Information Bureau is located near the centre of the townsite. Here details of accommodation, travel, recreation, and places of interest can be obtained. Nearly 350 summer cottages have been erected in the townsite; four garages and service stations, several hotels, lodges and bungalow camps, and many other enterprises, cater to the needs of visitors. A motion picture theatre, a dance pavilion and a roller skating rink are operated during the summer season. A museum containing a fine collection of mounted specimens of wildlife native to the region is well worth a visit.

Unless vacationists are carrying their own camping equipment it is advisable to arrange accommodation in advance. Lists of approved accommodation and agencies making reservations can be supplied upon request by the Government Information Bureau at Wasagaming. For those who ordinarily prefer to spend their vacation under canvas or in cabin trailers, a picturesque camp-ground has been laid out in a beautiful grove at Wasagaming, just west of the business section of the townsite. It is divided into blocks, each equipped with kitchen shelter, camp stoves, tables, running water, electricity, and other conveniences. Refrigerator buildings with individual lockers for the storage of perishable supplies are available for public use. A community building is the centre of camp-ground activity. A small fee is charged for the use of camping facilities in the park.

Areas suitable for baseball and softball, and a children's playground have been provided near the camp-ground at Wasagaming.

But to most visitors the chief attractions in Riding Mountain National Park lie outside the townsite. Riding Mountain is the home of many big game animals such as elk, moose, white-tailed and mule deer; while bear, beaver, timber wolves, and coyotes are also fairly numerous. Bird life in the park includes migratory waterfowl such as wild ducks, Canada geese, swans, cormorants, and pelicans. Many birds of beautiful plumage and pleasing song add interest for the nature lover. An exhibition herd of buffalo at Lake Audy is another wildlife attraction.

For those who regard a vacation incomplete without a little fishing, several lakes in the park including Clear Lake, Lake Audy, Moon Lake, and Whirlpool Lake, contain pike. Clear Lake also offers perch, whitefish and cisco, and trout are being planted there with a view to developing new angling opportunities.

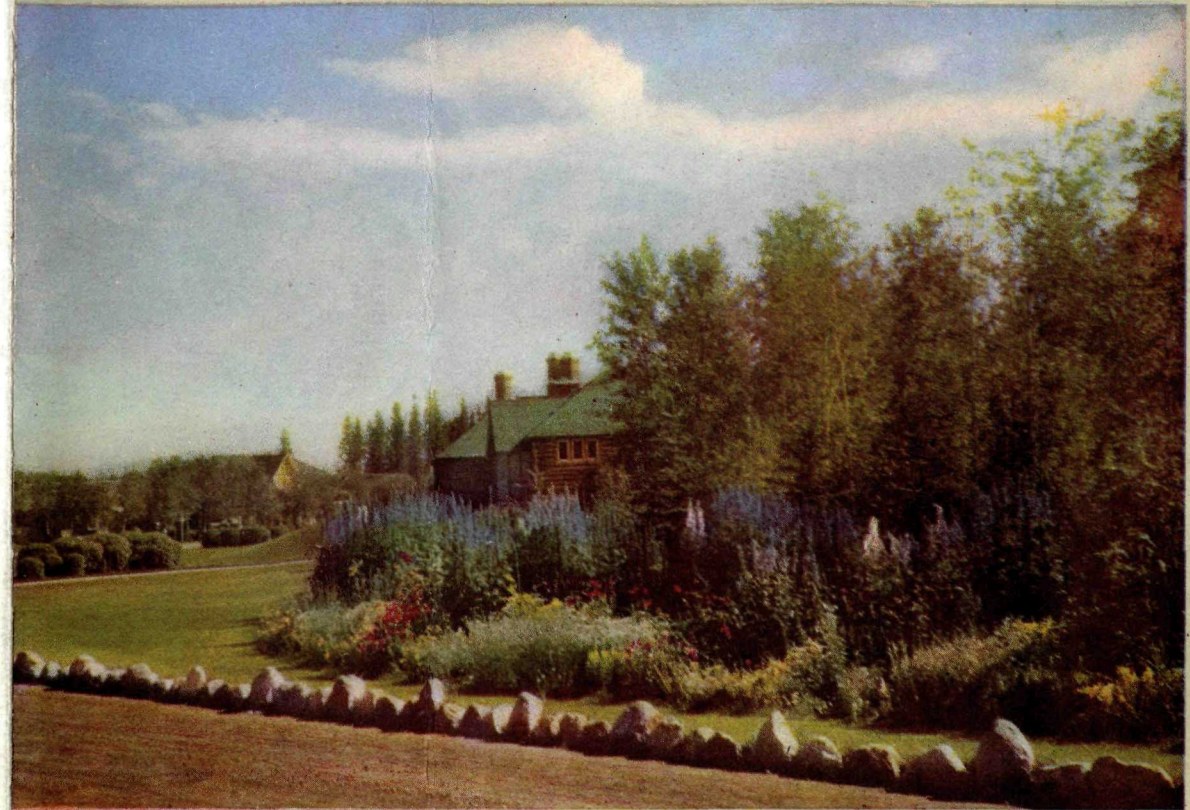
The park roads and trails provide wonderful opportunities for motoring, cycling, hiking, and riding. Saddle horses and bicycles may be rented at Wasagaming. Not only will visitors who explore the park by any of these methods be rewarded by interesting studies of wildlife and enjoy the cool freshness of the forests, but they will obtain many remarkable views of the surrounding country from numerous vantage points on the escarpment.

Picnic grounds with limited facilities for camping are situated at Moon Lake, Lake Katherine, Whirlpool Lake, and Lake Audy.

Approaches to Riding Mountain National Park by road, rail, and park highways and trails, are indicated on the map in the centre of this folder.

RIDING MOUNTAIN

• NATIONAL PARK •



Beautifully landscaped areas, enhanced by shrubs and beds of perennial flowers, surround the Park Buildings at Wasagaming

Write for information to:

NATIONAL PARKS BUREAU

LANDS, PARKS AND FORESTS BRANCH

DEPARTMENT OF MINES AND RESOURCES

OTTAWA, CANADA



Manitoba

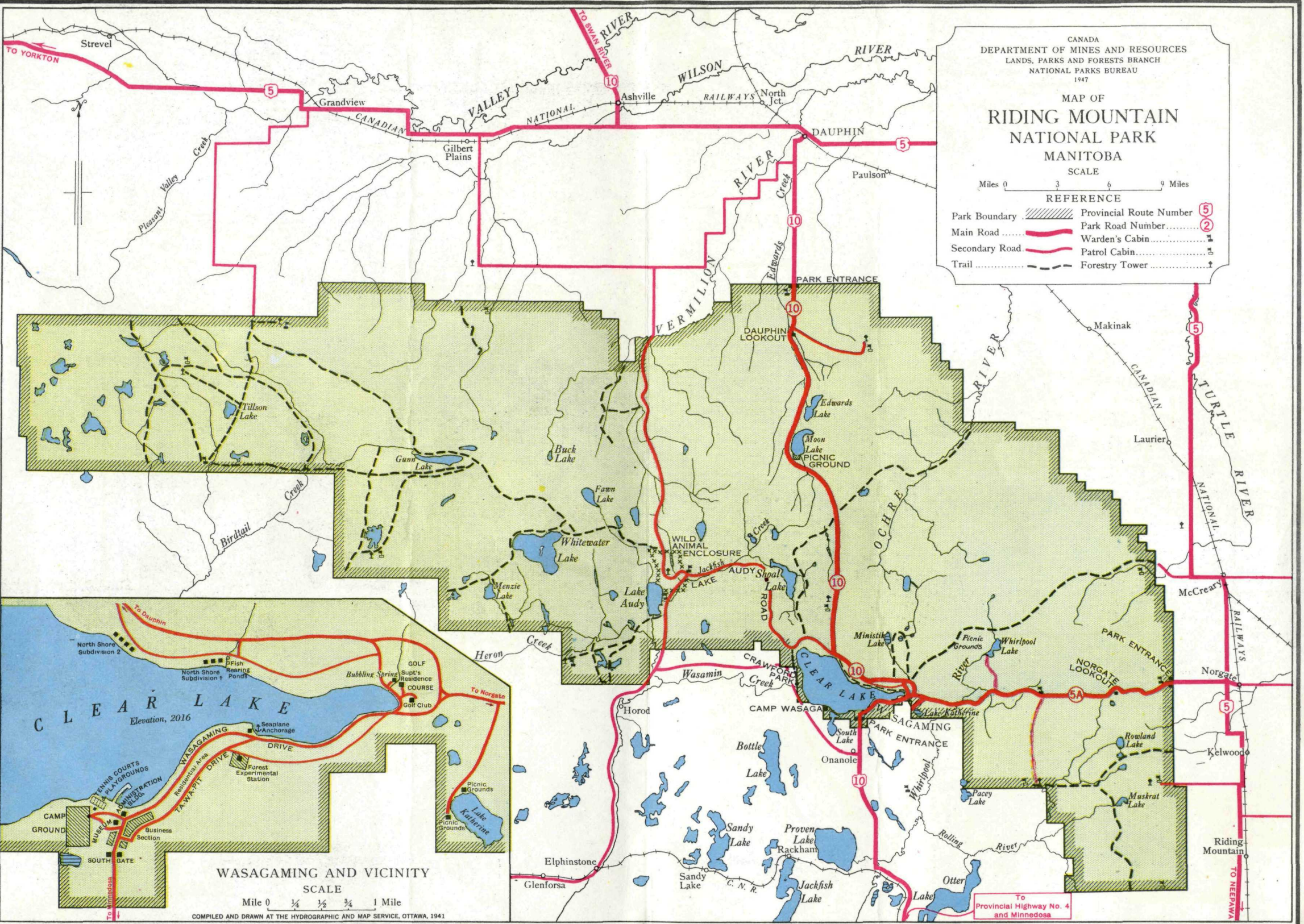
CANADA
 DEPARTMENT OF MINES AND RESOURCES
 LANDS, PARKS AND FORESTS BRANCH
 NATIONAL PARKS BUREAU
 1947

MAP OF
**RIDING MOUNTAIN
 NATIONAL PARK**
 MANITOBA

SCALE
 Miles 0 3 6 9

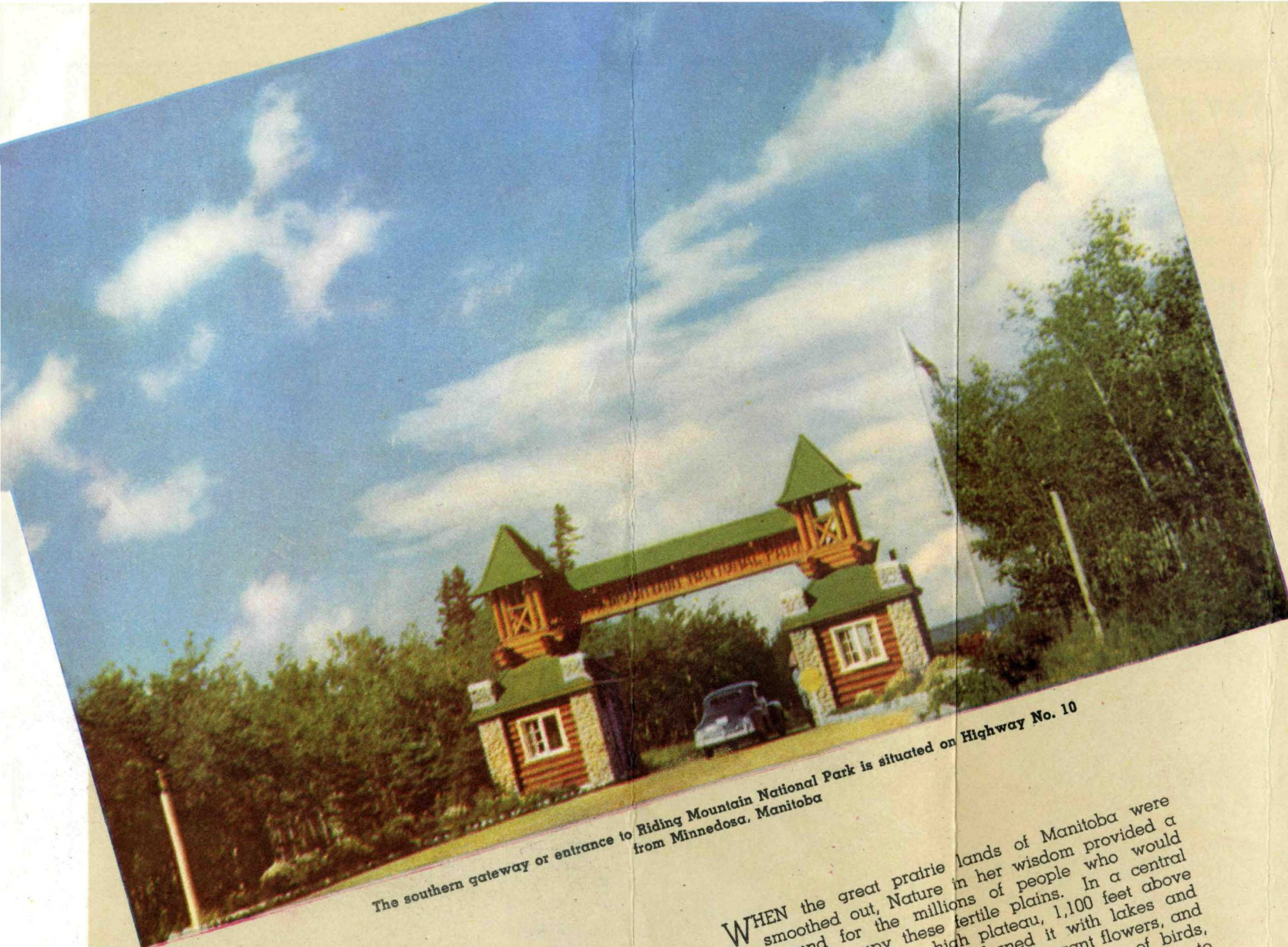
REFERENCE

	Park Boundary		Provincial Route Number
	Main Road		Park Road Number
	Secondary Road		Warden's Cabin
	Trail		Patrol Cabin
			Forestry Tower



WASAGAMING AND VICINITY
 SCALE
 Mile 0 1/4 1/2 3/4 1
 COMPILED AND DRAWN AT THE HYDROGRAPHIC AND MAP SERVICE, OTTAWA, 1941

To
 Provincial Highway No. 4
 and Minnedosa



The southern gateway or entrance to Riding Mountain National Park is situated on Highway No. 10 from Minnedosa, Manitoba

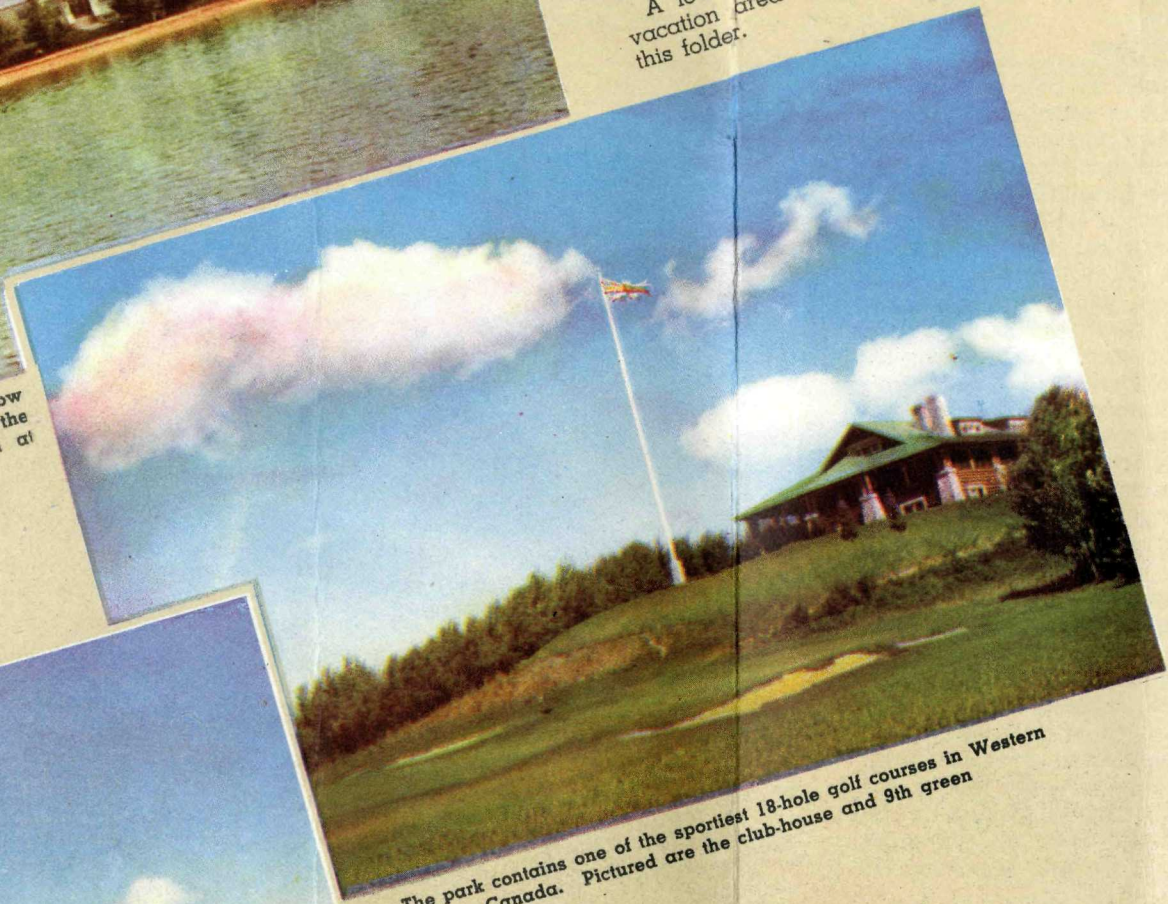
When the great prairie lands of Manitoba were smoothed out, Nature in her wisdom provided a playground for the millions of people who would eventually occupy these fertile plains. In a central location she raised a high plateau, 1,100 feet above the surrounding country, adorned it with lakes and tarns, clothed it with green trees, fragrant flowers, and lush pastures, enlivened it with the songs of birds, and turned loose in the fertile plains were populous and cultivated. Mile by mile the frontier was pushed northward by the flood-tide of settlement. But, wisely, this natural playground high up on the Manitoba escarpment, called Riding Mountain, was reserved as a national forest and later established as a national park.

This park soon became a popular playground for here in beautiful surroundings are all the requisites for an ideal vacation. There are broad, smooth roads; leafy trails; fine sand beaches and cool, clear waters that offer delightful bathing and swimming; a championship golf course; tennis courts, picnic and camping grounds; hotel and bungalow cabin accommodation; and restaurants, stores, and other services for the comfort and convenience of visitors.

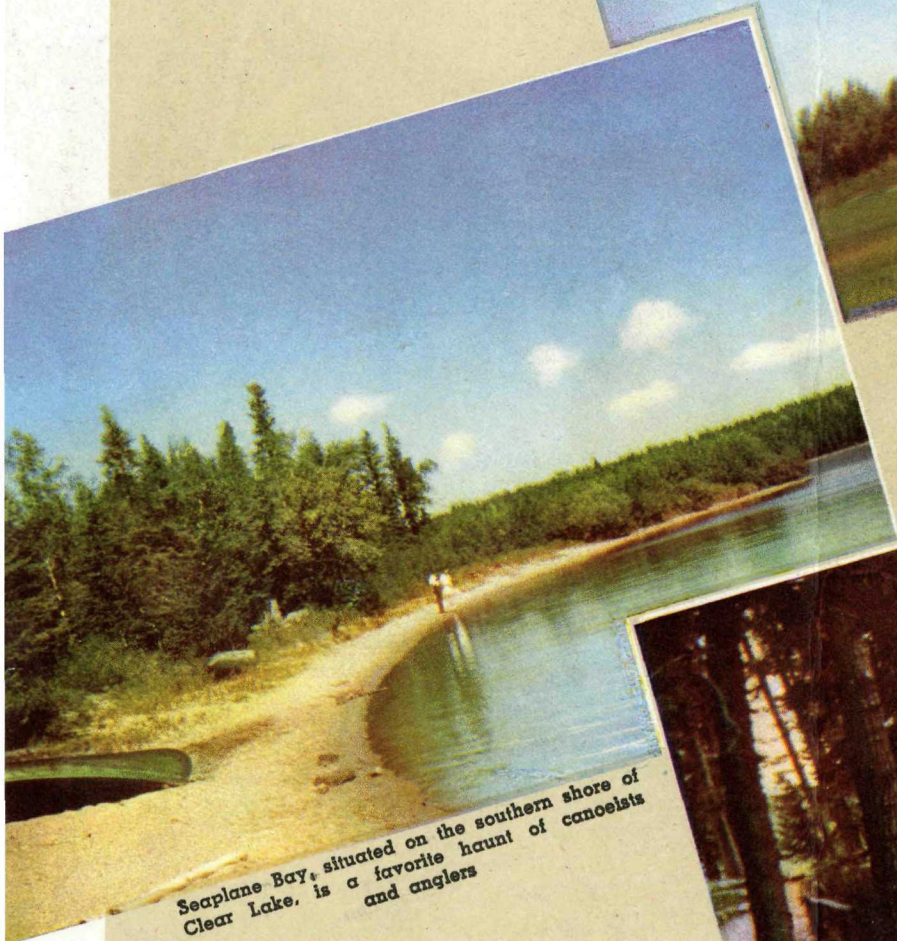
A few of the many attractions of this outstanding vacation area are illustrated in natural colours in this folder.



Bathers may safely enjoy the shallow waters of Clear Lake in front of the beach and The Chalet Hotel at Wasagaming



The park contains one of the sportiest 18-hole golf courses in Western Canada. Pictured are the club-house and 9th green



Seaplane Bay, situated on the southern shore of Clear Lake, is a favorite haunt of canoeists and anglers



From Bubbling Spring or Wishing Well, reached by a short drive from Wasagaming, issues a steady flow of very cold clear water



A section of the park camp-ground at Wasagaming, where, for a nominal fee, visitors may pitch their tents or park their trailers



The Government pier and breakwater at Wasagaming where boats are docked. On the western side is a grassy sward for sun-bathing



Extending far into Clear Lake, the pier forms a rendezvous for those who enjoy swimming, diving, and other water sports



Meal-time in the public camp-ground, where shelters, tables, camp-stoves, and community ice-houses are available to visitors



The English garden at the rear of the Museum Building is a charming retreat. It contains a fountain, and a summer-house with thatched roof



The mule deer is one of the native wild animals that enjoy the sanctuary conditions of Riding Mountain National Park