

Riding Mountain National Park

Manitoba,

-

-

Canada.



Manitoba's National Playground



East Entrance Gate, Riding Mountain National Park, Manitoba, Canada, No. 1.

MANITOBA'S NATIONAL PLAYGROUND

Among Western Canada's most noted beauty spots is the Riding Mountain National Park in Manitoba, an area of 1,148 square miles which has been set aside by the Government of Canada as a wild life sanctuary and a playground for the people. Situated on the broad undulating plateau that forms the summit of the Riding Mountain, the Park occupies one of the highest elevations in the Province, and provides a delightful contrast to the great fertile plains which stretch away for miles to the east. Covered with luxuriant forest growths interspersed with open grassy plains and dotted with numerous crystal lakes, this charming reservation seems destined by Nature as a place of enjoyment both for residents of Canada and for the visitor within her gates.

The entire Park area forms a natural home for wild animal life, including several species of big game. Moose, elk, deer and bear roam its forests, and beaver are found along its streams. The herd of wild elk inhabiting the Park is one of the largest known in Canada, and numbers nearly 2,000 head. Another unusual wild life attraction in the Park is a small herd of buffalo which was brought from Alberta and placed in a suitable enclosure near Audy lake, along with a number of native elk, moose and deer.

The townsite of Wasagaming, a beautiful summer resort situated on the southern shore of Clear Lake, forms the community centre and the Park headquarters. Here the visitor will find broad streets, fine walks bordered by flowers and shrubs, and imposing landscaped areas including a central park surrounding the main Government buildings. Fronting the townsite for more than two miles is a broad sandy beach fringed by a heavy growth of evergreens among which will be found the summer homes of many residents of Manitoba.

Excellent accommodation is available at Wasagaming, ranging in type from the modern summer hotel to the popular bungalow camp. For those who prefer living under canvas, the Government campground, situated in a grove facing the lake, will more than satisfy the average requirements. Camping privileges include the use of kitchen shelters, stoves, tables and benches, and camping supplies and souvenirs are obtainable from the stores in Wasagaming.

Recreational opportunities are a feature of Riding Mountain Park. The gradually shelving beaches of Clear Lake ensure delightful bathing and swimming under ideal conditions. Boats and canoes are available for hire, and motor-boats make excursions up and down the lake. A number of fine tennis courts, a tennis pavilion, a children's playground, and a baseball diamond form other attractions for leisure hours. Devotees of golf will find the Park golf course, situated at the eastern end of Clear Lake, one of the sportiest in Manitoba, and its eighteen holes will test the skill of the average player. Hiking and riding are popular sports, and numerous forest trails lead to interesting points.

Riding Mountain National Park is readily accessible either by automobile or railway. The Park is linked up with the main Provincial highway system by all-weather roads which lead north, east and south from Wasagaming, and rail connections with the Park may be made via the towns of Dauphin, Neepawa and Minnedosa.



View of Chalet Hotel from Clear Lake, Hiding Mountain National Park, Manitoba, Canada, No. 2.



View towards East of Wasagaming Drive from Community Building, Administration Building to the left, Business portion of townsite, Riding Mountain National Park, Manitoba, Canada, No. 3.



Wasagaming Lodge (Hooming House), Wasagaming Township, Riding Mountain National Park, Manitoba, Canada, No. 4.



Superintendent's Residence, Golf Course and Club House, Clear Lake, Riding Mountain National Park, Manitoba, Canada, No. 5.



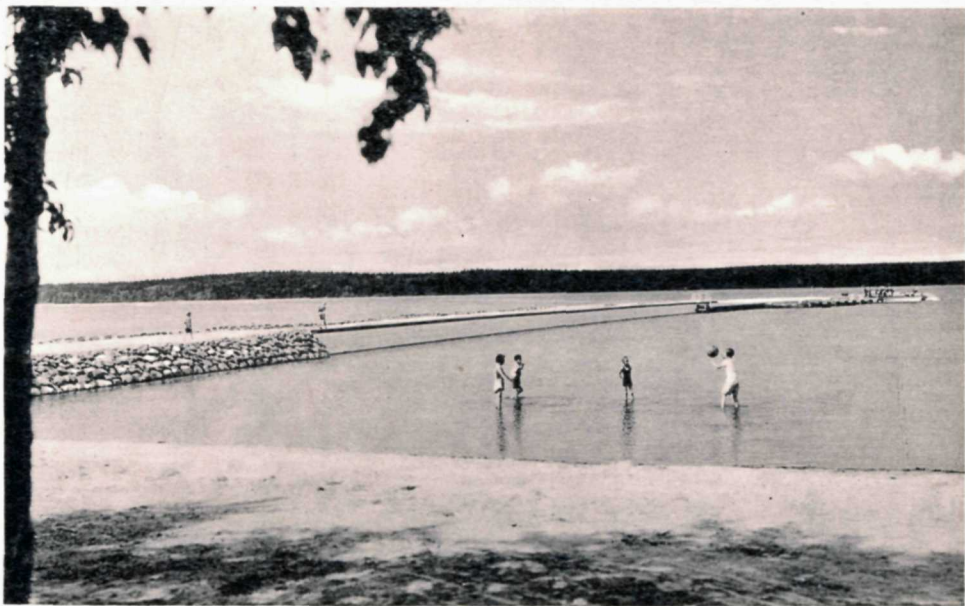
Clear Lake, Riding Mountain National Park, Manitoba, Canada, No. 7.



Bubbling Spring, Riding Mountain National Park, Manitoba, Canada, No. 9.



Golf Club House and Clear Lake, Riding Mountain National Park, Manitoba, Canada, No. 10.



New Breakwater, Wasagaming Beach, 680 ft. long—25 ft. wide. Boat stalls at outer end. Hiding Mountain National Park, Manitoba, Canada, No. 11.



Sunset over Clear Lake, Hiding Mountain National Park, Manitoba, Canada, No. 12.



Ninth Hole, Clear Lake Golf Course, Hiding Mountain National Park, Manitoba, Canada, No. 13.



View of Commemoration Cairn, Central Park, Wasagaming, looking towards Clear Lake. Bath houses and break-water in background, Riding Mountain National Park, Manitoba, Canada, No. 14.



Norgate, Clear Lake Highway, Riding Mountain National Park, Manitoba, Canada, No. 15.



View of Community Building from Administration site, Wasagaming townsite, Riding Mountain National Park, Manitoba, Canada, No. 18.



Clear Lake, Riding Mountain National Park, Manitoba, Canada, No. 19.



View of Administration Building and portion of Central Park from Community Building, Riding Mountain National Park, Manitoba, Canada, No. 20.



Bath Houses, Wasagaming Beach, Wasagaming, Riding Mountain National Park, Manitoba, Canada, No. 21.



Portion of Wasagaming Beach in vicinity of Chalet Hotel, Riding Mountain National Park, Manitoba, Canada, No. 22.



Campers in Government Auto Camp Grounds, Wasagaming, Hiding Mountain National Park, Manitoba, Canada, No. 23.



Gate Keeper's Cabin, situated at East Gate, Riding Mountain National Park, Manitoba, Canada, No. 24.



Canoeing, Clear Lake, Riding Mountain National Park, Manitoba, Canada, No. 25.



Sunset, Clear Lake, Riding Mountain National Park, Manitoba, Canada, No. 26.



Sunset, Clear Lake, Hiding Mountain National Park, Manitoba, Canada, No. 27.



Mouth of Bogey Creek, East end Clear Lake, Riding Mountain National Park, Manitoba, Canada, No. 28.

