

WATERTON LAKES NATIONAL PARK



VISITORS GUIDE

Published By

WATERTON PARK CHAMBER OF COMMERCE
& VISITORS ASSOCIATION
P.O. Box 5592
Waterton Lakes National Park
Alberta, Canada T0K 2M0
(403) 859-2203

In Co-operation with

Environment Canada - Canadian Parks Service
Chinook Country Tourist Association
Alberta Tourism
Alberta Lotteries

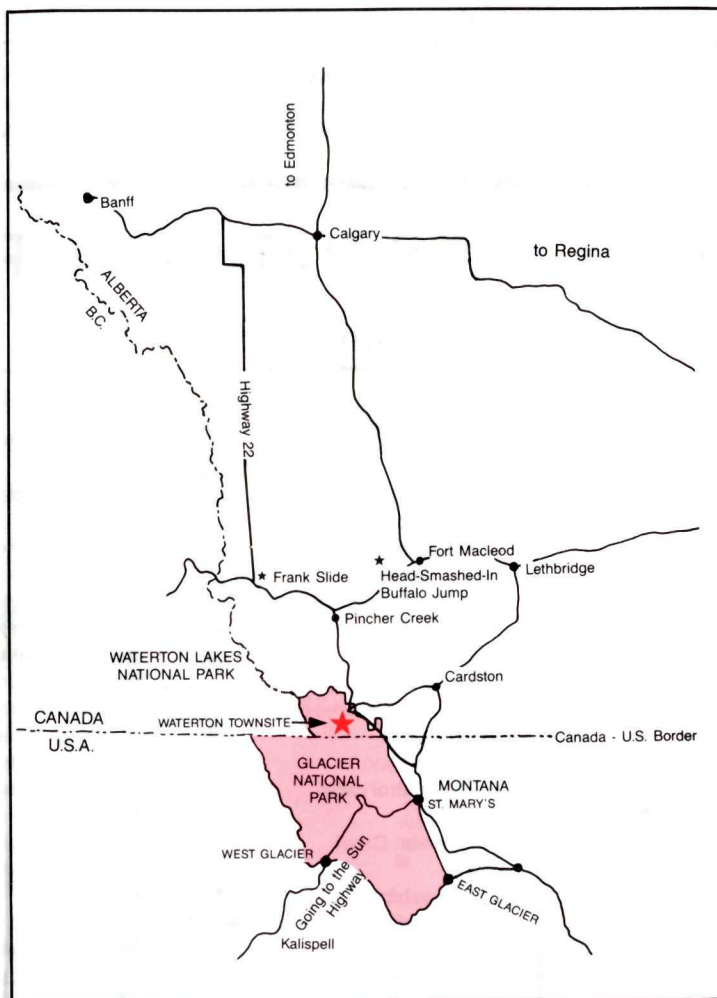
FOR FREE DISTRIBUTION

Alberta, in all her majesty.



TRAVEL INFORMATION

- 159 miles (264 km. or approximately 3 hours) south of the Olympic City, Calgary, Alta.
- 78 miles (130 km. or approximately 1 hour and 15 minutes) west of Lethbridge, Alberta
- only 40 miles (60 km., 3/4 hour) north of Glacier Park east entrance at St. Mary's, Montana
- Airports and car rentals are available in Calgary and Lethbridge, Alberta, and Kalispell and Great Falls, Montana



WATERTON ACTIVITIES

- Golfing
- Scenic boat tours
- Windsurfing
- Breathtaking hikes and strolls
- Fishing
- Horseback Riding
- Diving
- Swimming

Waterton is located in beautiful southwest Alberta. Known as Chinook Country, southwest Alberta offers an exceptional combination of attractions and recreational opportunities. When in Waterton, don't miss these outstanding features: Head-Smashed-In-Buffalo-Jump World Heritage Site, Historic Fort Macleod, Frank Slide Interpretive Centre, the Remington-Alberta Carriage Collection, Writing-On-Stone-Provincial Park, Kananaskis Country, the Nikka Yuko Japanese Garden . . . And There's So Much More! Contact us today for your **Free Vacation Planning Kit**.

Phone: **Toll-Free 1-800-661-1222**
(operator 6 Western Canada / Northwest USA)

Write: Chinook Country,
2805-WL, Scenic Drive,
Lethbridge, Alberta, Canada
T1K 5B7

**TAKE AN ALBERTA BREAK
IN SOUTHWEST ALBERTA**



Southwest Alberta - Canada

ACCOMMODATIONS

- 1 ASPEN MOTEL:** Quiet, clean, safe, mountain view motel and family bungalows, some with cooking, newly furnished, non-smoking rooms. Whirlpool, playground facilities, and picnic tables. Located in the center of townsite, across from the swimming pool, tennis courts, restaurants, and shopping. Reservations made easy, year round. Phone (403)859-2255 or Fax (403) 859-2342. P.O. Box 100, Waterton Park, AB. T0K 2M0.
- 2 BAY SHORE INN:** Waterton's Luxury Lakefront Inn. A full service hotel located on the shore of Waterton Lake. The only three star hotel by AAA in Waterton. Rooms with heart shaped whirlpool tubs and restaurant room service from Kootenai Brown Dining Room.
- 3 CRANDELL MOUNTAIN LODGE:** "Genuine hospitality in a relaxing country atmosphere." Open from April 1 to mid October. Check for our spring and fall "Mountain Magic" value packages. Clean, quiet, comfortable and relaxing at reasonable rates. Reservations are recommended. P.O. Box 114, Waterton Park, AB. T0K 2M0. Phone (403) 859-2288.
- 4 EL CORTEZ MOTEL:** Waterton's true "value" accommodation. Clean, comfortable . . . and affordable! 1, 2, and 3 bedroom units. Perfect for the overnigher or a family reunion. Shopping, playgrounds/pool, marina, restaurants closeby. Major credit cards welcome. Open May to October. Reservations: Box 67, Waterton Park, AB. T0K 2M0. Phone (403) 859-2366, Fax (403) 859-2428.
- 5 KILMOREY LODGE:** Open year round. Country Style Inn located on the shore of Emerald Bay. Featuring decor with a combination of rustic wood, soft colors and Down comforters, non-smoking rooms along with The Lamp Post Dining Room, Rams Head Lounge, Gazebo Cafe On The Bay and room service. Easy reservations. Phone (403) 859-2334 or Fax (403) 859-2342. P.O. Box 100, Waterton, AB. T0K 2M0.
- 8 NORTHLAND LODGE:** Small Lodge snuggled against the mountain side. Open from mid June to mid September. Quiet, clean, cozy rooms with large fireplaces and TV. in the Guests. Lounge. Balcony offers a lovely view of the valley and lake. Some kitchenettes. Reasonable rates. Phone (403) 859-2353.
- 7 THE PRINCE OF WALES HOTEL:** Located in Upper Waterton Lakes National Park, the Prince of Wales Hotel stands majestically at the end of Waterton Lakes and overlooks the longest unguarded frontier in the world. This magnificent 81-room gable structure has three story high lobby windows that look out on a chain of lakes that stretch to the horizon. Full service restaurant, English tearoom, Cocktail lounge, Evening entertainment and Meeting and Banquet Facilities. In Canada please call (403) 236-3400. Glacier Park Inc., Greyhound Tower, Station 1210 Phoenix, Arizona, 85077. 602-248-6000 (October to mid May) or 406-226-5551 (mid May to late Sept.)

OFF SITE ACCOMMODATIONS

- ROCKY RIDGE LODGE:** Bed and breakfast with Sauna. Arrange small tours (4 - 12 people) to historic and scenic points in Southern Alberta and for hiking, trail rides, golfing and fishing, as well as shuttle to Waterton Park. Phone (403) 653-2350 or (403) 653-3043. Fax (403) 653-1640. Write Box 117, Mountain View, AB. T0K 2M0.
- STOREY BROOK FARM:** Bed and breakfast farm with all the exciting year round farm life experiences, petting zoo, trampoline, fireplaces, sauna, non-smoking. Located 16 km. (10 mi) north of Waterton Park, Box 2740, Pincher Creek, AB. T0K 1W0. Phone (403) 627-2841

FOOD SERVICE

- 10 FAST EDDY'S GOURMET TAKE-OUT:** Featuring the legendary "Shopsey's" all-beef gourmet hot dogs, Eddy's "old fashioned" ice cream, and lip smackin' spicy fries and wings. For early risers — tasty muffins and gourmet coffees. Sandwiches, juices, cold drinks and more. Located in the Tamarack Mall.
- 5 GAZEBO CAFE ON THE BAY:** Enjoy the outdoors and relaxing atmosphere with a menu ranging from nachos to steak sandwiches and fully licenced services. Located on the front lawn of the Kilmorey Lodge. Phone 859-2334.
- 2 HUNGRY BEAR PIZZA, SUBS & DONAIR:** Best tasting pizza in town with patio tables. Choose from our wide variety of subs and donairs to eat in or take out or have it delivered to your room in the Bayshore Inn. Open daily.
- 24 GOLF COURSE:** Barbeque, licenced restaurant, patio service, Phone 859-2383.
- 2 KOFFEE SHOP:** For friendly, cosy, and informal atmosphere stop for quick breakfast, lunch, snack, coffee, pastry, dinner or pizza patio seating available on Waterton Ave.
- 2 KOOTENAI BROWN DINING ROOM:** Elegant gourmet dining. Enjoy beautiful views of lake and surrounding mountains. For reservations call 859-2211. Open 7:00 a.m. to 10:00 p.m.
- 5 LAMP POST DINING ROOM:** Open year round offering the finest in hospitality and culinary delights. Join us for a fine dining experience. Fully licenced and air conditioned. Open 7:30 a.m. to 10:00 p.m. daily. Drop in or reservations phone 859-2334.
- 11 NEW FRANK'S RESTAURANT:** Chinese and western cuisine. Breakfast, lunch specials. Homemade burgers, soups and donairs to eat in or take out or have it delivered to your room in the Bayshore Inn. Open daily from 11:00 a.m.
- 12 PEARL'S PATIO CAFE & DELI:** On Windflower Avenue with deli meats and salads, gourmet coffees and fresh baking. Our cafe features quality meals from fresh ingredients. Hikers take-out lunches. Phone 859-2284.

- 13 PIZZA OF WATERTON:** Dough made daily. All fresh veggies. A unique homemade sauce covered with "Lots of Mozza". Eat in or take-out. 103 Fountain Avenue (close to the Post Office). 859-2660.
- 14 SUMMER THOUGHTS ICE CREAM SHOPPE:** Ice cream! Ice cream! We scoop from now 'til then, Located at the movie theatre. Ring: 859-2264.
- 15 WATERTON PARK CAFE:** Join us at the "CAFE" for a truly unique dining experience. Relax in a warm, friendly atmosphere where we offer: premium quality fresh food prepared daily; fully licensed bar (Happy Hour 10 p.m. - midnight); moderate prices; fresh baking daily; patio seating available. Phone 859-2393. On Waterton Ave.

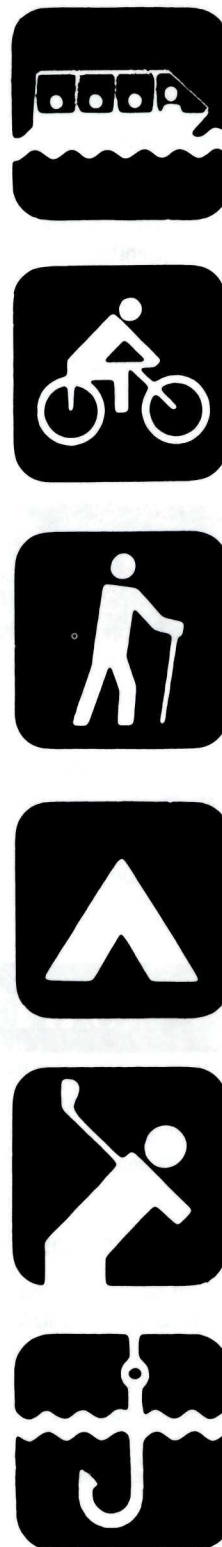
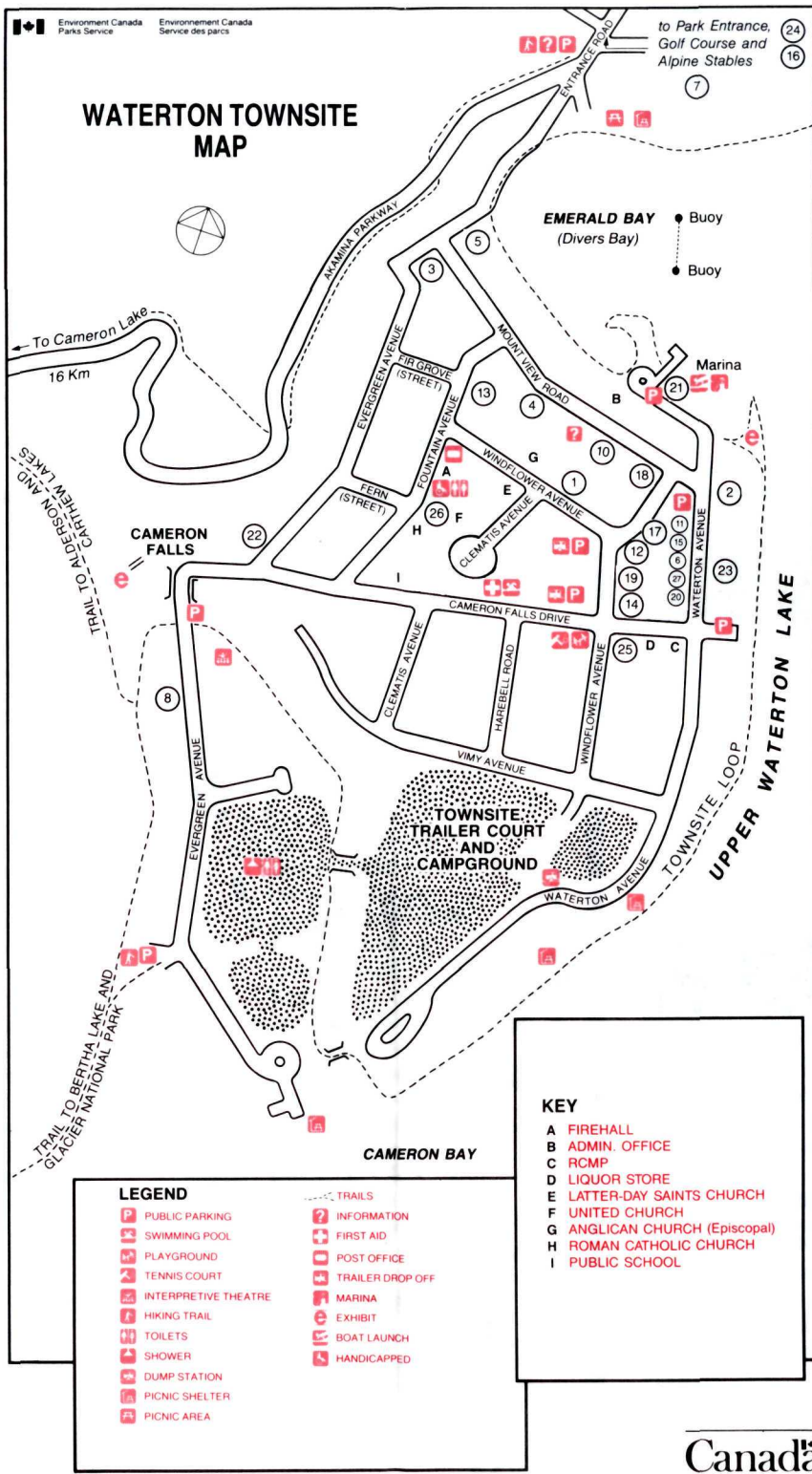
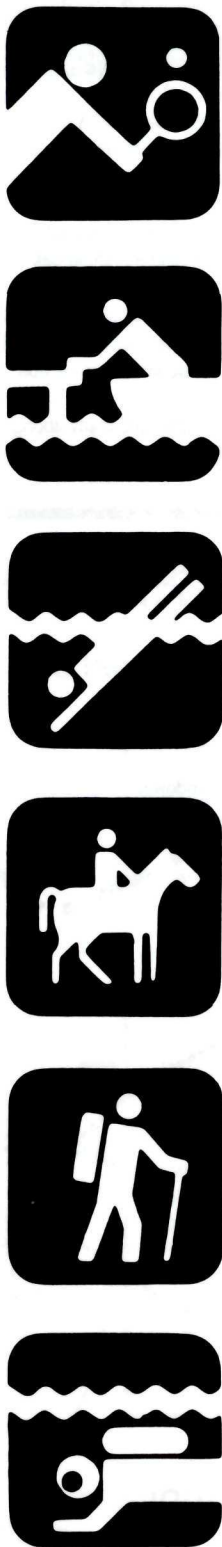
VISITOR SERVICES

- 16 ALPINE STABLES:** View spectacular mountain scenery, wildlife, and wildflowers in their natural wilderness habitat easily by horseback. We specialize in novice riders, as well as experienced. Open daily 9:00 a.m. to 5:00 p.m. May through September. One, two, three hour, day and group rates. Special pack trips by reservation. Phone (403) 859-2462 for more information, or write P.O. Box 53, Waterton Park, AB. T0K 2M0.
- 18 BUDGET RENT A CAR:** Available at Pat's. See Cameron Lake, Red Rock Canyon, or Southern Alberta . . . and leave your motorhome parked! Phone (403) 859-2266 for reservations. P.O. Box 36, Waterton, Alta. T0K 2M0
- 17 EXPOSURES PHOTO - 1 HOUR FINISHING:** Located in the Itussistakiopi coin-op Launderette, 301 Windflower Avenue. All photo finishing is done on premises. "Your films never leave the park". Open Monday - Saturday, 859-2460.
- 17 ITUSSISTAKIOPi COIN-OP LAUNDERETTE:** Open daily 8:00 a.m. to 10:00 p.m. mid June to mid September. Shoulder season hours vary. On Windflower Ave.
- 10 PARK TRANSPORT COMPANY:** Complete hiker shuttle services including the Carthew - Alderson "Hike the Summit" trail, Waterton's most popular and scenic adventure. Townsite / regional taxi and charter services. Interpretive adventure tours and step-on guides with "Mountain Sunset Tours". For information, Box 67, Tamarack Mall, Waterton Park, AB. T0K 2M0. Phone (403) 859-2378, Fax (403) 859-2428.
- 18 PAT'S CYCLE RENTAL:** Pat's has a selection of mountain bikes as well as scooter rentals and the ever popular surry rental. Minor bike repairs available as well as bike tires, tubes, and other accessories. Phone 859-2266.
- 18 PAT'S SERVICE STATION — CAA/AAA ROAD SERVICE:** Pat's has a full line of belts and hoses for most popular vehicles. Minor auto repairs done on the spot. Pat's also has vehicle and bottle propane, diesel, and gasoline service. Located downtown. Phone 859-2266 or Box 36, Waterton Park. T0K 2M0.

ACCOMMODATION

ACCOMMODATION	NUMBER OF ROOMS	CREDIT CARD	FAMILY UNITS	OPEN	CONVENTION FOLTS.	DINING	LOUNGE	WHIRLPOOL
Aspen Motel 403-859-2255 P.O. Box 100, Waterton Park, Alta. T0K 2M0 Fax 403-859-2342	53	AE MC US ER	•	Apr. to Oct.				•
Bay Shore Inn Box 36, Waterton Park, Alta. T0K 2M0 Phone 403-859-2211 800-661-8080 Fax 403-859-2291	70	AMX MC VS DC		Apr. to Oct.		•	•	•
Crandell Mountain Lodge 403-859-2288 P.O. Box 114, Waterton Park, Alta. T0K 2M0	12	VS MC ER AE	•	Apr. 1 to Oct. 31				
El Cortez Motel 403-859-2366 P.O. Box 67, Waterton Park, Alta. T0K 2M0	35	MC VS AE ER	•	May to Oct.				
Kilmorey Lodge 403-859-2334 P.O. Box 100, Waterton Park, Alta. T0K 2M0 Fax 403-859-2342	25	MC VS AE ER DC		Year Rnd.		•	•	•
Northland Lodge 403-859-2353 Gen. Del., Waterton Park, Alta. T0K 2M0	7	VS		Mid May to Sept. 30				
Prince of Wales Hotel 406-226-9311 Glacier Park Inc., East Glacier, MN 59434 Central Reservations 406-226-5551	82	MC VS		June 1 to Sept. 14		•	•	
Rocky Ridge Lodge 403-859-2350, 403-653-3043 P.O. Box 117, Mountain View, Alberta. T0K 1N0 Fax 403-653-1640	4	MC VS	Year Rnd.					•
Stanley Hotel 403-859-2345 Gen. Del., Waterton Park, Alta. T0K 2M0	9-cent bath			Mid May to Oct. 1				
Storey Brook Farm P.O. Box 2740, Pincher Creek, Alta. T0K 1W0 Phone 403-627-2841								

CAMPGROUNDS	NUMBER OF SUITES	SERVICED	SEMI-SERVICED	SHOWERS	WASHROOMS	SEWAGE DISPOSAL	KITCHEN SUITES	RESERVATIONS
Waterton Townsite 403-859-2224 Park Operated mid May to October	238	•	•	•	•	•	•	No
Crandell Mountain 403-859-2224 Park Operated mid May to Labor Day	129	•	•	•	•	•	•	No
Belly River 403-659-2224 Park Operated mid May to mid September	24	•	•	•	•	•	•	Group
Public and Private campgrounds on peripheral of Park								



- 19 **ROCKY MOUNTAIN FOOD MART:** Across from the swimming pool parking lot. Souvenirs, hardware, and groceries. Fresh meat and produce in season. Hours are 8:00 a.m. to 10:00 p.m. Open year round. Hours in off season vary. On Windflower Ave.
- 14 **SPORTSCARD EMPORIUM:** The Largest Sportscard collection in the Park. All kinds of hockey, baseball, basketball, and football cards. Appraisals and other sportscard related supplies also available. Get in on the action! Newly located at the Opera House on Windflower Ave.
- 10 **TAMARACK GAS & FOODMART:** Serving the park's visitors for 70 years, we offer friendly and helpful service at Waterton's "one-stop convenience store". Esso/Exxon gas, grocery and confectioneries . . . and much more! Start your daily travels with a fresh, gourmet coffee and bakery treat. All major credit cards. Maps, brochures and complete travel information. Located at the Tamarack Mall.
- 20 **TREASURY BRANCH AGENCY:** Located on main street upstairs in Caribou Clothing building. Most banking services available. Money exchange. On Waterton Ave.
- 21 **WATER SHUTTLE SERVICE:** Service to the starting point of the Crypt Lake Hike (Rated by Today Magazine as the BEST hike in Canada). Spectacular waterfalls and passage through a mountain tunnel are a few of the highlights of this unique trail. For further information call (403) 859-2362 or write P.O. Box 126, Waterton Park, AB.. T0K 2M0.
- 22 **WATERTON FAX SERVICES:** Waterton's public fax system and answering machine service. Fax (403) 859-2139, answering machine (403) 859-2695. 308 Waterton Avenue.
- 23 **WATERTON HERITAGE CENTRE:** Museum and bookstore, information, natural and cultural history exhibits, and a changing art gallery. Operated by the Waterton Natural History Association, phone 859-2624 anytime or 859-2267 during the summer season. The W.N.H.A. is a cooperating association with Parks Canada, sponsors of the Annual Heritage Ball. Call for information for Heritage Education Program one and two day courses. Mail order guide books, posters, and park videos. Box 145, Waterton Park, AB. On Waterton Ave.
- 24 **WATERTON LAKES NATIONAL PARK GOLF COURSE:** Framed against Crandell Mountain, S. Thompson designed the course. New E. Z. Go Golf Carts, locker facilities, barbeque, licensed restaurant, patio service. Advanced bookings phone (403) 859-2383. Richard Wright, Professional. AB'S FINEST RESORT.
- 14 **WATERTON OPERA HOUSE:** Current motion picture releases. Afternoon and evening shows. Watch for special live productions. Snack bar featuring fresh hot popcorn served with real butter, soft drinks and candy. Phone for show times and features. Phone 859-2264 or 859-2466.
- 10 **WATERTON PARK MONEY EXCHANGE:** We offer complete currency exchange services for U.S. and Canadian funds. "No service charges." Current daily exchange rates are based on Canadian Chartered bank quotes. Daily 9 a.m. - 8 p.m. (hours vary in off-season). In the Tamarack Mall.

- 21 **WATERTON SHORELINE CRUISES:** See the beautiful mountain scenery of Waterton/Glacier Park aboard the historic M.V. International. Enjoy the entertaining commentary as you cross the International border on route to the Visitor Centers at Goat Haunt in Glacier National Park, Montana. For further information call (403) 859-2362 or write P.O. Box 126, Waterton Park, AB.. T0K 2M0.
- 25 **WELCH'S CHOCOLATE SHOP:** Serving Banff for 30 years, now delighted to serve Waterton and community. Full line of chocolate and candy from all over the world. Imported English Cadbury and Flake bars. Phone 859-2363.

SHOPPING

- 10 **BOOK, ART AND PHOTO:** Waterton's newest and most complete selection of books, prints and photographic supplies. Hardcover, paperbacks, and magazines for the whole family. Cameras, film and accessories. Unique gifts, art prints and cards from various environmental, wildlife and landscape themes. In the Tamarack Mall.
- 20 **CARIBOU CLOTHES:** Hand-crafted sheepskin, leather, and fur items. Manufactured locally (factory located 15 miles from Waterton). Also many gift items are available. Phone (403) 859-2346. On Waterton Ave.
- 6 **DILL'S GENERAL STORE:** English Woollens, Irish Linens, Hudson Bay Blankets, Ladies Wear. Phone 859-2345. On Waterton Ave.
- 27 **RUFFLES BOUTIQUE:** Featuring distinctive lifestyles in Ladies and Juniors Fashions. We carry wonderful sweaters, Fashion Jewellery and accessories. Our beautiful embroidered souvenir T-shirts in sizes for the whole family. In 1992 we have expanded our Christmas Boutique Selection to over 30% of our store. Along with the Xmas Boutique we have exclusive Gifts and selected high quality hand crafts.
- 12 **PEARL'S HANDCRAFT SHOP:** Selling all Canadian gifts and souvenirs, jewellery, weaving, pottery, glasswork, soaps, cone and willow wreaths, candles and more!! Come and browse. Phone 859-2611. On Windflower Avenue.
- 10 **STREETSCAPE ADVENTURES:** Waterton's newest adventure shop! RollerBlade sales and rentals. Mountain bikes and accessories by Marin, Norco and Specialized. The hottest fashions from Quicksilver, O.P., BUM Equipment, Westbeach, Vuarnet as well as a large selection of quality outdoor accessories. Located in the Tamarack Mall.
- 11 **TOUCH THE EARTH BOUTIQUE:** Specializing in Waterton T-shirts, and Sweatshirts. Many gifts available which include moccasins, soapstone, mugs, and jewellery. On Waterton Ave.

- 2 **VILLAGE GIFT SHOP:** A large gift shop at your disposal with souvenirs, film, postcards, books on wildlife, T-shirts, jewellery, hats and much more. Just stop by and browse around. On Waterton Ave.
- 10 **WATERTON GENERAL STORE:** Unique custom designs for T-shirts, sweats, and hats. Large selection of clothing, footwear, and brand-name outerwear clear-outs. Souvenirs, postcards, giftware and more. Tight budget? . . . this store is for you! Located in the Tamarack Mall.
- 10 **WATERTON SPORTS AND LEISURE:** "Waterton's Outdoor Store" with a large selection of fishing tackle, camping supplies and outerwear. Quality outdoor equipment, footwear and clothing from Patagonia, Merrell, North Face, Royal Robbins, Marmot, and more!!! Licenses, maps, current trail conditions and the best fishing spots. Open daily. Located in the Tamarack Mall.

BARS & LOUNGES

- 2 **FIRESIDE LOUNGE:** For intimate surrounds and variety of your choices for drinks and evening of soft piano music stop by the cozy Fireside Lounge. On Waterton Ave.
- 5 **RAMS HEAD LOUNGE:** Open year round. On the deck or inside by the fireplace. Full food service and off sales. Children welcome with parent until 8:00 p.m. At Kilmorey Lodge.
- 2 **THIRSTY BEAR SALOON:** For "Karaoke" sing-along on weekdays, and Rock bands entertainment on weekends, also video games, pool table. On Waterton Ave.

CONVENTION & CONFERENCE FACILITIES

- 2 **BAYSHORE INN:** Large meeting room, with break-out rooms for get togethers for any occasion, weddings, banquets, reunions, meetings, etc. Phone 859-2211.
 - 5 **KILMOREY LODGE:** Open year round. The shoulder seasons are the perfect time to bring your meeting group to the atmosphere of Waterton Park. 859-2334.
 - 26 **WATERTON LIONS CLUB HALL:** Hall rental is available year round. Newly renovated, great for all occasions. Phone Eugene Lowe at 859-2526.
- LAUREN'S COMPUTER SERVICES:** For the professional touch, let us help with those last minute presentations, hand-outs, or brochures. We feature Macintosh based design graphics with NEC laser output. Accounting, payroll, data-base, and word processing also available. Phone/Fax 859-2428.

EMERGENCY NUMBERS

AMBULANCE	403/859-2636
WARDEN SERVICE	403/859-2224/2477
R.C.M.P.	
Waterton (May - Oct.)	403/859-2244
Cardston	403/653-4931
Pincher Creek	403/627-4424
FIRE	403/859-2222
HOSPITALS	
Cardston	403/653-4411
Pincher Creek	403/627-3333

FIRST AID STATIONS AT THE SWIMMING POOL AND GOVERNMENT EQUIPMENT COMPOUND.

GENERAL PARK INFORMATION

Waterton Lakes National Park — "Where the Mountains Meet the Prairie." The juxtaposition of rolling prairie and lofty mountains found in Waterton Lakes National Park provides a memorable contrast unique in the Canadian National Parks system. Waterton has its place in this system, which was set up to protect areas representative of the diversity of landscapes and wildlife in Canada's natural regions. While National Parks are dedicated to the education and enjoyment of all of us, we must be careful to leave them unimpaired for the benefit of future generations.

The proximity of prairie and mountain landscapes in Waterton produces a rich variety of flowers and animals. About 55% of Alberta's total recorded wildflower species can be found in Waterton, including many considered rare in Canada. Wapiti, mule deer and bighorn sheep are commonly seen here and both grizzly and black bears are found in the Park.

Waterton's 525 sq. km. (203 sq. miles) has a unique geological history, including the oldest exposed bedrock in the Canadian Rockies. More recently, this rugged landscape has been carved by glaciers, resulting in many interesting landforms. Abundant lakes, streams and waterfalls add interest to a landscape which provides ample recreational opportunities — from water activities to scenic drives and backcountry hikes.

In fact, this area has seen a long history of use. The abundance of wildlife attracted many aboriginal peoples and has contributed to a rich native history extending back over 11,000 years and illustrated in over 200 identified archaeological sites in the Park.

Waterton Lakes Forest Reserve was created in 1895, largely due to the efforts of Frederick Gotsdal. Around the turn of the century, oil was discovered leading to the drilling here of western Canada's first oil well. Many colourful characters have left their mark on Waterton's history. Lt. Thomas Blakiston, one of the area's earliest explorers was the person responsible for naming the lakes after Charles Waterton, a well-known (but eccentric) 18th century naturalist. "Kootenai" Brown, the Park's first European settler, was also the Park's first superintendent.

In 1932, Waterton Lakes joined with Glacier National Park in Montana to form the world's first International Peace Park. This designation was initiated by the Rotary Clubs of Alberta and Montana. The Peace Park commemorated the friendship between Americans and Canadians along the world's longest undefended border but has since represented the need for cooperation in a world of shared resources. Because we share the same ecosystems, cooperation between the two Parks is not merely a symbol but an ongoing reality.

Both parks have also been designated Biosphere Reserves under the UNESCO Man and Biosphere program. These reserves provide scientific information to help solve problems in the relationships between people and their environment. As you explore the Park, you will discover Waterton Lakes has a lot to experience in a very small area!

SCENIC DRIVES

Many of the Park's spectacular features are accessible by road. We invite you to enjoy them on one or all of our popular scenic drives. Our Park theme "Where the Mountains Meet the Prairie" becomes a reality as you drive the 8 km (5 miles) **Entrance Road** between the Park gate and townsite. Magnificent views of colourful prairie flowers and grasses are set against a mountain backdrop and complemented by the glittering chain of Waterton Lakes. The Prince of Wales Hotel, a Waterton landmark since 1927, indicates you will soon arrive at Waterton Park, our lakeside townsite.

The **Akamina Parkway** begins near the townsite and runs for 16 km (10 miles) along the Cameron Valley. Points of interest include the site of Western Canada's first producing oil well, Oil City (the city that never was!) and picturesque Cameron Lake. A round trip, including a brief stop at the lake, takes about an hour.

The **Red Rock Parkway** meanders over rolling prairie and through the Blakiston Valley to the striking rocks and cascading creeks of Red Rock Canyon, a distance of 15 km (9 miles). The drive features several magnificent mountains, including Mt. Blakiston, the Park's highest peak. A round trip from the townsite, including a short walk at the canyon, takes about an hour and a half.

The primary route between Waterton and Glacier, the **Chief Mountain Highway** climbs from the grasslands to a viewpoint overlooking a potpourri of Waterton landscapes. En route to the border crossing, the road traverses fields and forests dotted with the many wetlands created by Crooked Creek. This is a relatively unchanged landscape where you can enjoy an element of wildness not found along other park roads.

OTHER ATTRACTIONS

The **Bison Paddock**, located near the Pincher Creek entrance to the Park, features a small herd of plains bison maintained in honour of the larger herds that once roamed freely in this area. The bison can be seen while driving a narrow road through the paddock. This road is not suitable for vehicles with trailers.

Cameron Falls is a popular townsite feature. This picturesque waterfall is created as Cameron Creek falls from the Cameron Valley into the deeper Waterton Valley; over some of the oldest exposed bedrock in the Canadian Rockies.

Goat Haunt is a beautiful spot worth visiting at the south end of Upper Waterton Lake, in Glacier National Park (USA). It is accessible from Waterton both by trail and boat. The area features an International Peace Park Pavilion, exhibit and ranger station. As well, it is a major trailhead for routes leading into Glacier National Park. Visitors staying overnight must report to a Customs / Immigration Ranger at Goat Haunt.

PORTS OF ENTRY

CHIEF MOUNTAIN, Alberta and Montana	
mid-May - May 31	9 a.m. - 6 p.m.
June 1 - mid-Sept.	7 a.m. - 10 p.m.
mid-Sept. - mid-May	Closed
CARWAY (Cardston, Alberta) / PEIGAN (Montana)	
Nov. 1 - mid-May	9 a.m. - 6 p.m.
mid-May - Oct. 31	7 a.m. - 11 p.m.

SAFETY

Many hazards exist in the natural environment of Waterton. Risk of injury or death can be reduced by learning about the prevalence of such hazards, and taking reasonable and sensible precautions.

STEEP MOUNTAINOUS TERRAIN

Most accidents involving natural hazards in Waterton occur when persons fall down steep slopes and cliffs. Minimize risk when around these areas by staying on designated trails, keeping well back from edges, and supervising children closely. Wet surfaces, moss-covered slopes, and loose rock located near steep drops are especially dangerous.

LAKES AND STREAMS

Cold water lakes and swift-flowing streams present the dangers of drowning and hypothermia. Persons walking along banks of streams and lakes, and attempting to cross creeks, have accidentally slipped in. Boaters have been capsized by strong winds and large waves, which may suddenly occur.

WEATHER

Mountain weather can shift rapidly and unpredictably. Snow or fog can occur at any season, particularly at higher elevations. Very strong winds are often experienced in this region of the Rockies. Weather has been noted as a common factor in many cold exposure (hypothermia) incidents. To avoid problems, wear and carry appropriate clothing and equipment, and watch for changes in the weather.

WILDLIFE

All park animals are wild, unpredictable and potentially dangerous. Grizzly and black bears may cause fatal injuries depending on the circumstances of the encounter. The "YOU ARE IN BEAR COUNTRY" brochure gives more detailed information and advice. Other wildlife such as cougar, coyote, moose and elk have attacked and injured people. Mule deer can aggressively seek food from adults and children and may cause injury by striking out with their hooves. DO NOT FEED OR ENTICE ANIMALS TO APPROACH. Viewing and photography are best done from a safe distance. Do not leave food or garbage available to wildlife at any time.

STINGING INSECTS AND TICKS

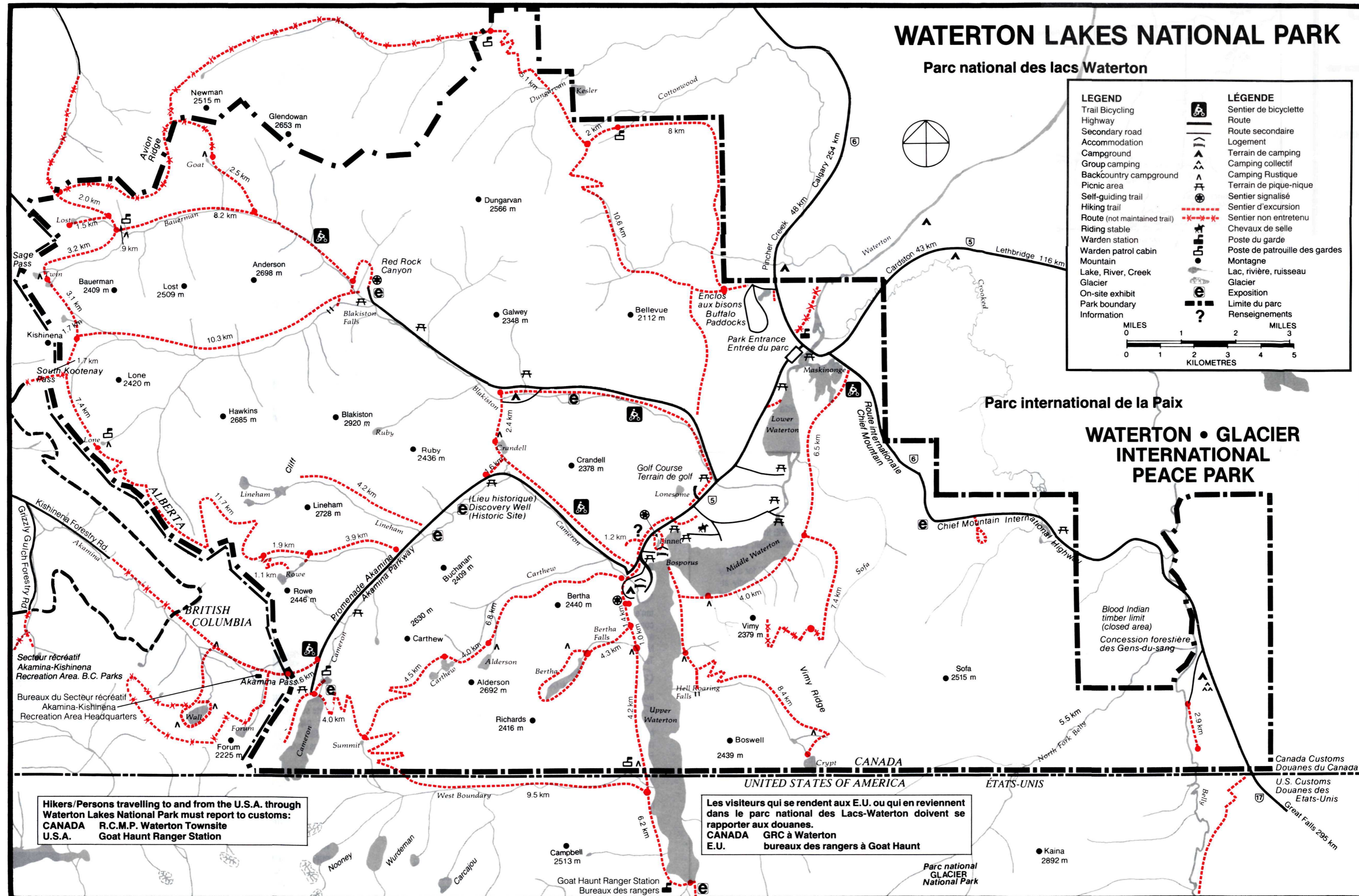
Bees and wasps may be found at campgrounds and picnic sites. To help avoid stings, ensure potential attractant foods such as sweet drinks and raw meat are left out as little as possible. Ticks are most active in spring and early summer. By checking yourself and children daily, most will be found before attachment occurs. Tick bites seldom result in illness, but several serious diseases may be transmitted.

DRINKING WATER

Surface waters in Waterton are generally of excellent quality. However, there is always a chance that harmful bacteria or parasites may exist in untreated surface water. Problems can be avoided by carrying water from one of the park's treated water systems or boiling / filtering water before drinking.

WATERTON LAKES NATIONAL PARK

Parc national des lacs Waterton



Hikers/Persons travelling to and from the U.S.A. through Waterton Lakes National Park must report to customs: CANADA R.C.M.P. Waterton Townsite U.S.A. Goat Haunt Ranger Station

Les visiteurs qui se rendent aux E.U. ou qui en reviennent dans le parc national des Lacs-Waterton doivent se rapporter aux douanes. CANADA GRC à Waterton E.U. bureaux des rangers à Goat Haunt

BACKCOUNTRY

TRAILS

There are 255 kms of trails in Waterton Lakes National Park, many of which can be hiked in a day or less. Trails are provided for a variety of users including hikers, horse riders and trail bicyclists. Watch for Information signs at park trailheads which indicate the types of trail use permitted.

ETIQUETTE

- Check park trailheads for designated uses.
- Stay on designated trails; shortcutting may be dangerous and erosion is accelerated.
- Walk/cycle in single file to reduce impacts such as trail widening, erosion and braiding.
- Hikers please move to the side of the trail when approaching horse riders to allow skittish horses to pass.
- Cyclists please travel slowly and carefully; allow wildlife to move off the trail before passing; signal your approach well in advance, indicate the side you intend to pass on, pass slowly and with care; dismount when approaching a horse and stand on the downhill side if possible.

HAZARDOUS ACTIVITIES

If you are undertaking an activity that you think is hazardous (eg. mountain climbing) you may register the trip with a park warden. Lone travellers are encouraged to register for their safety. **Once registered you are required to register out by returning the safety registration on completion of the trip.** Park wardens investigate all overdue registrations.

BACKCOUNTRY CAMPING

Waterton's 13 designated campgrounds (shown by the symbol Δ on the map) offer dry toilets and a surface water supply. Some may offer cooking facilities, shelters and/or horse facilities. Random camping is permitted at Lineham Lakes. Hazardous Activity registration is recommended. Use fuel burning stoves only. **Overnight Backcountry Camping Permit is mandatory.** Obtain a free "Park Use" permit from the Information Centre or Administration Office. Return of this permit on completion of your trip is not required. Permits are issued on a first come, first-served basis. Reservations are accepted according to established guidelines. A quota system for campground occupancy and group size is used to control use, minimize impacts and maximize your backcountry experience.

SHORT HIKES AND STROLLS

EASY HIKES

Trail	Townsite (loop)	Trailhead	Length	Time (one way)
Prince of Wales (loop)	Emerald Bay (Townsite)		2.0 km. / 1.5 mi.	45 minutes
Linnet Lake (loop)	Across from Government Equipment Compound (Townsite)		1.0 km. / 0.6 mi.	30 minutes
Cameron Lakeshore	Cameron Lake		1.6 km. / 1.0 mi.	30 minutes
Akamina Lake	Cameron Lake		0.5 km. / 0.3 mi.	15 minutes
Red Rock Canyon (loop)	Red Rock Canyon		0.7 km. / 0.4 mi.	20 minutes
Blakiston Falls	Red Rock Canyon		1.0 km. / 0.6 mi.	30 minutes

MODERATELY EASY TRAILS

Trailhead	Trailhead	Length	Time (One Way)	Elevation Gain
Lower Bertha Falls	Townsite	2.9 km. / 1.8 mi.	1 hour	150 m. / 429 ft.
Crandell Lake	Red Rock Parkway	2.4 km. / 1.5 mi.	1 hour	100 m. / 328 ft.
Akamina Parkway	Akamina Parkway	1.6 km. / 1.0 mi.	45 minutes	100 m. / 328 ft.
Bear's Hump	Information Centre (Townsite)	1.2 km. / 0.7 mi.	40 minutes	200 m. / 656 ft.
Goat Lake	Red Rock Canyon (Snowshoe)	2.5 km. / 1.5 mi.	2 hours	400 m. / 1,312 ft.
Crypt Lake	Crypt Landing	8.6 km. / 5.4 mi.	3 - 4 hours	700 m. / 2,296 ft.
Carthew - Alderson	Cameron Lake	19 km. / 12 mi.	6 - 8 hours	600 m. / 1,968 ft.
	Cameron Falls			1000 m. / 3280 ft.

MODERATELY DIFFICULT TRAILS

Trailhead	Trailhead	Length	Time (One Way)	Elevation Gain
Bear's Hump	Information Centre (Townsite)	1.2 km. / 0.7 mi.	40 minutes	200 m. / 656 ft.
Goat Lake	Red Rock Canyon (Snowshoe)	2.5 km. / 1.5 mi.	2 hours	400 m. / 1,312 ft.
Crypt Lake	Crypt Landing	8.6 km. / 5.4 mi.	3 - 4 hours	700 m. / 2,296 ft.
Carthew - Alderson	Cameron Lake	19 km. / 12 mi.	6 - 8 hours	600 m. / 1,968 ft.
	Cameron Falls			1000 m. / 3280 ft.

NATIONAL PARK REGULATIONS

Leave natural or historic objects (e.g. rocks, fossils, horns, antlers, plants, wildflowers, nests) you observe, undisturbed for others to discover and enjoy.

Wild animals can be dangerous. It is unlawful to feed, entice or touch wildlife in a national park.

Fishing in national park waters requires a national park fishing license. These licenses are available, for a fee, at various information outlets and some commercial establishments throughout the park. A fishing regulations summary describes locations, seasons, catch and possession limits and other restrictions applicable in the national parks.

Grazing is not permitted. Use of pelletized feed for horses is required.

Pets must remain on a leash at all times in national parks.

Camp only in designated camping areas, those marked by the Δ signs. Permit required.

Construction of shelters, sleeping pads, horse corals is not permitted in national parks. Use only the backcountry facilities provided.

Open fires are permitted at some locations, in the fireboxes provided. Keep fires small and conserve fuel. Use only deadfall for fuel where fires are permitted. Use of fuel burning stoves is preferred and encouraged.

Wash away from water sources and sleeping areas to reduce the risk of pollution and unwanted confrontations with wild animals.

Pack out all litter.